

FOR SALE | USER/ INVESTMENT OPPORTUNITY

11 DUBLIN STREET

TORONTO | ON



METROPOLITAN
COMMERCIAL





DETAILS

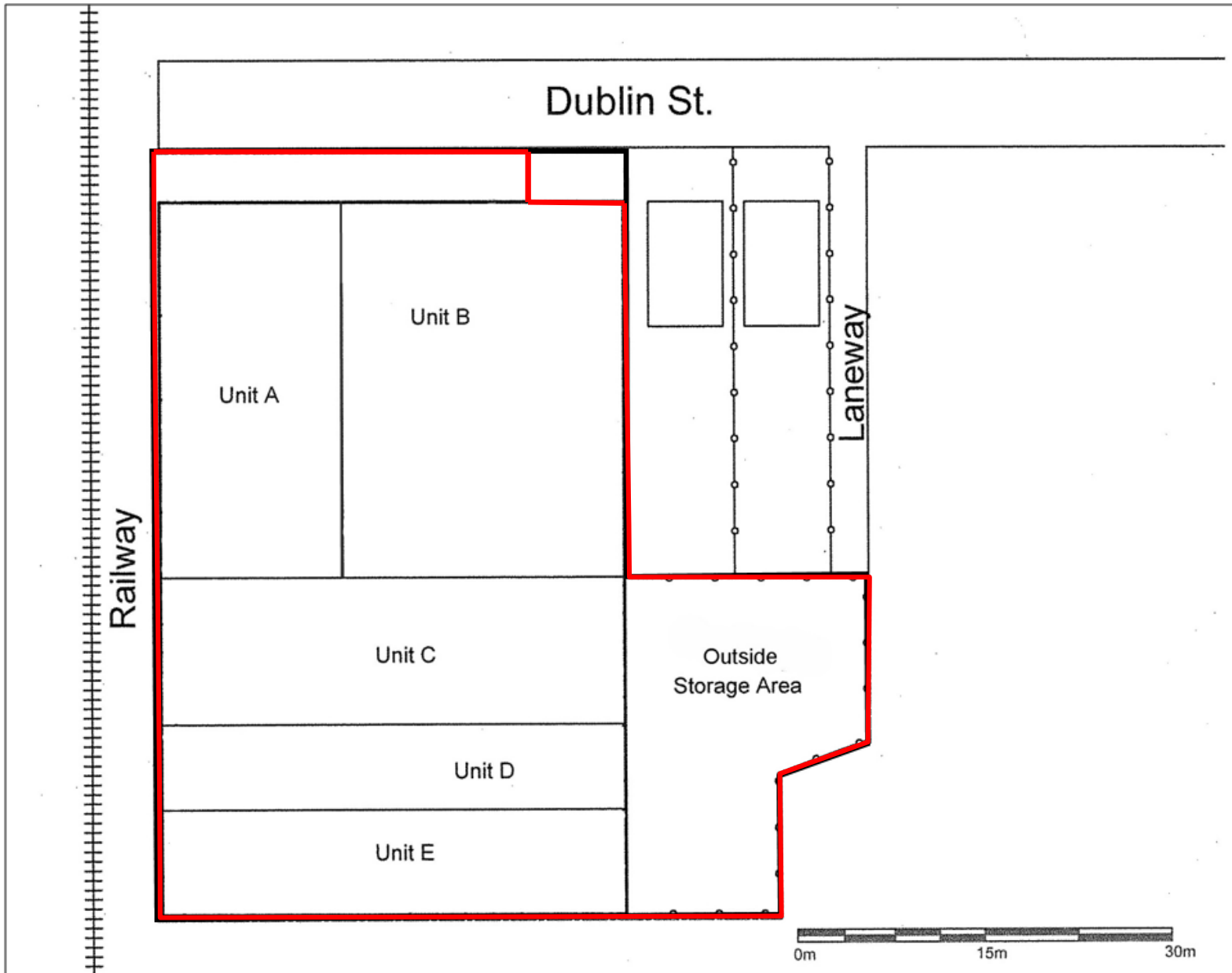
Location	Located in the Brockton Village near Bloor St W and Lansdowne on Dublin Street. Click Here for Map
Building Details	22,000 SF (approximate)
Lot Dimensions	117.09' Frontage x 215.08' Depth
Lot Area	28,324 SF
Zoning	See Former City of Toronto By-Law No. 438-86

FEATURES

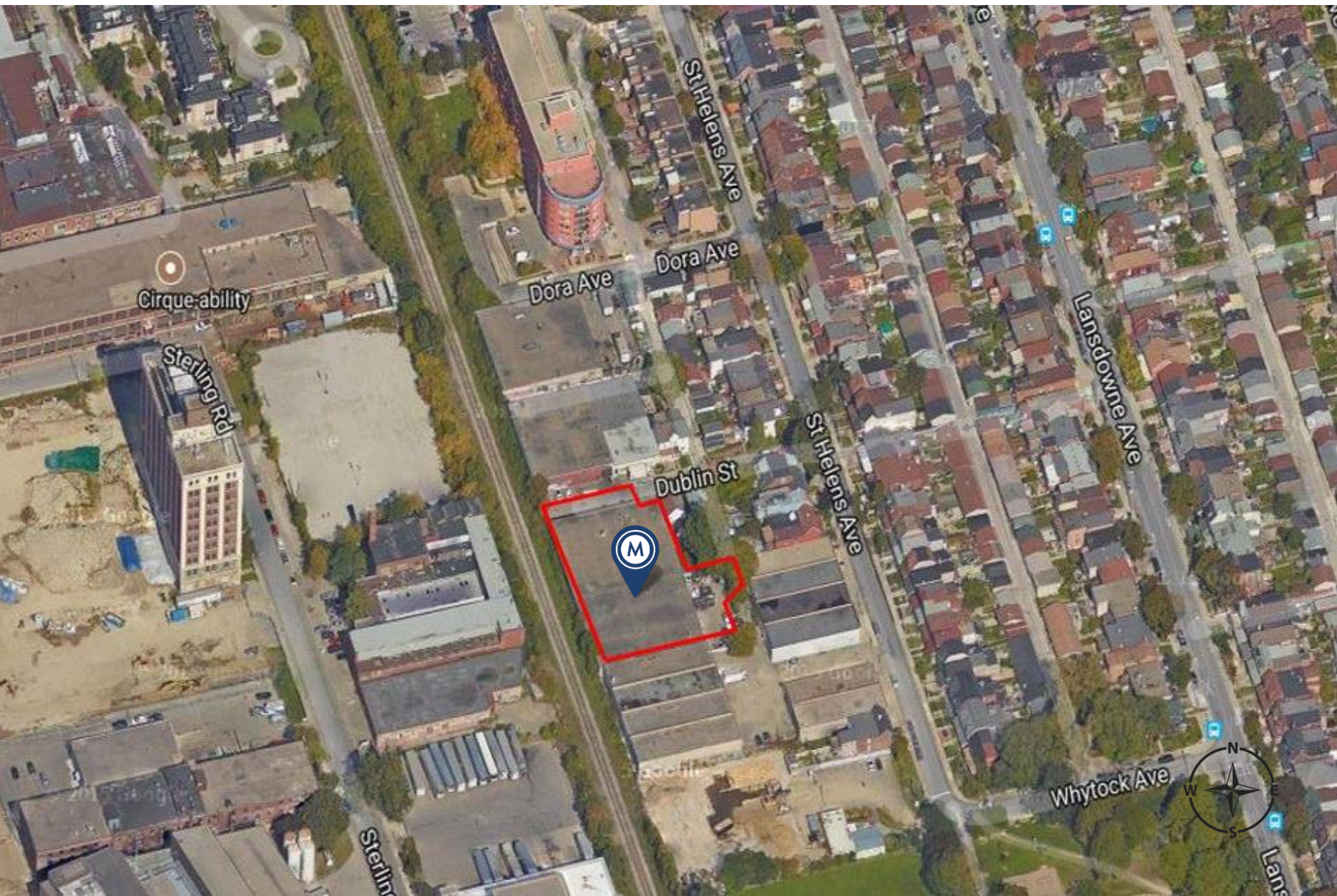
- Majority of the building occupied by owner.
- Unique industrial building ideal for a user or studio retrofit.
- Active area for mixed residential + commercial development.
- Adjacent properties could also be acquired.

ASKING PRICE

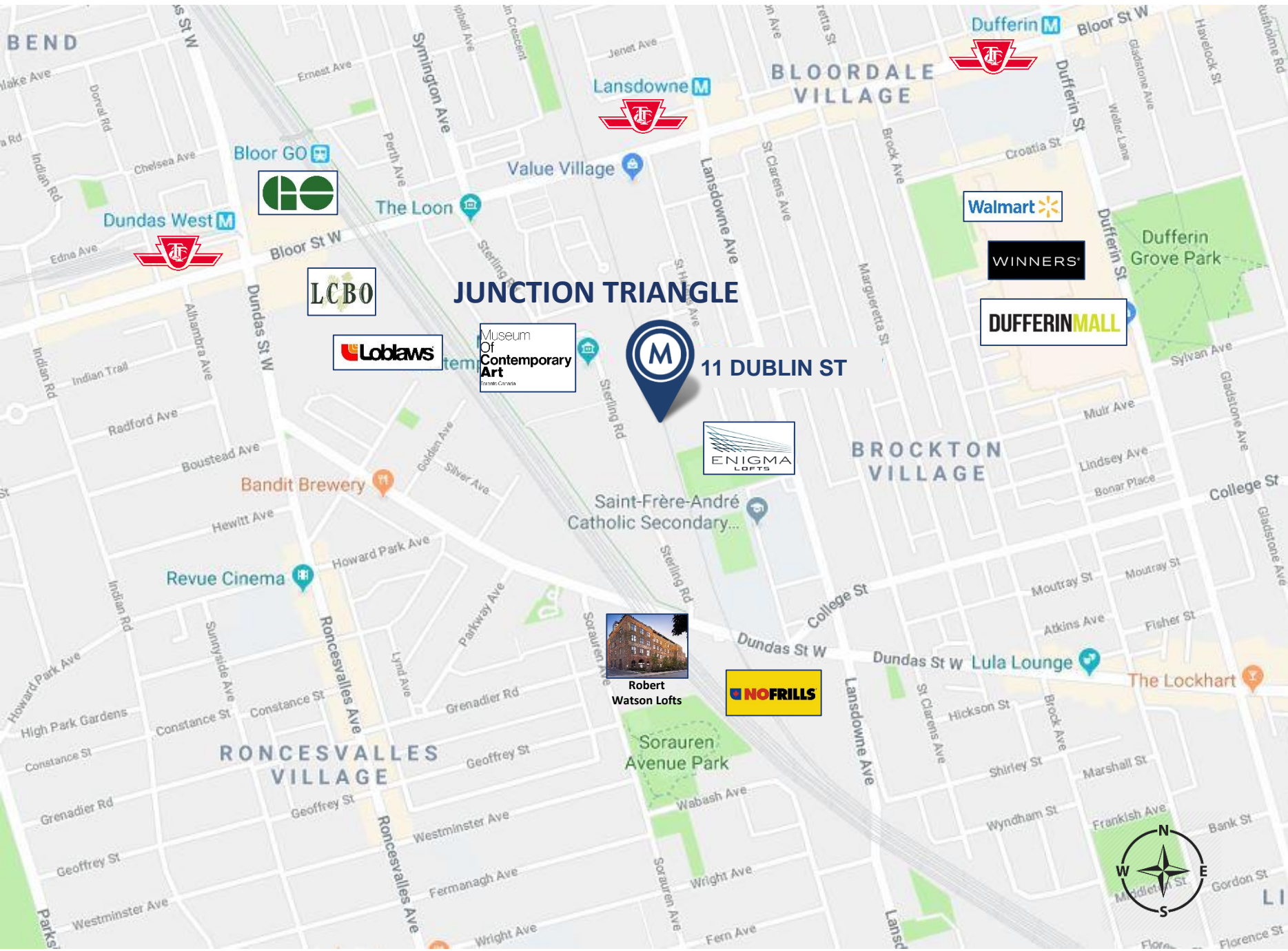
\$7,950,000



FLOOR PLAN



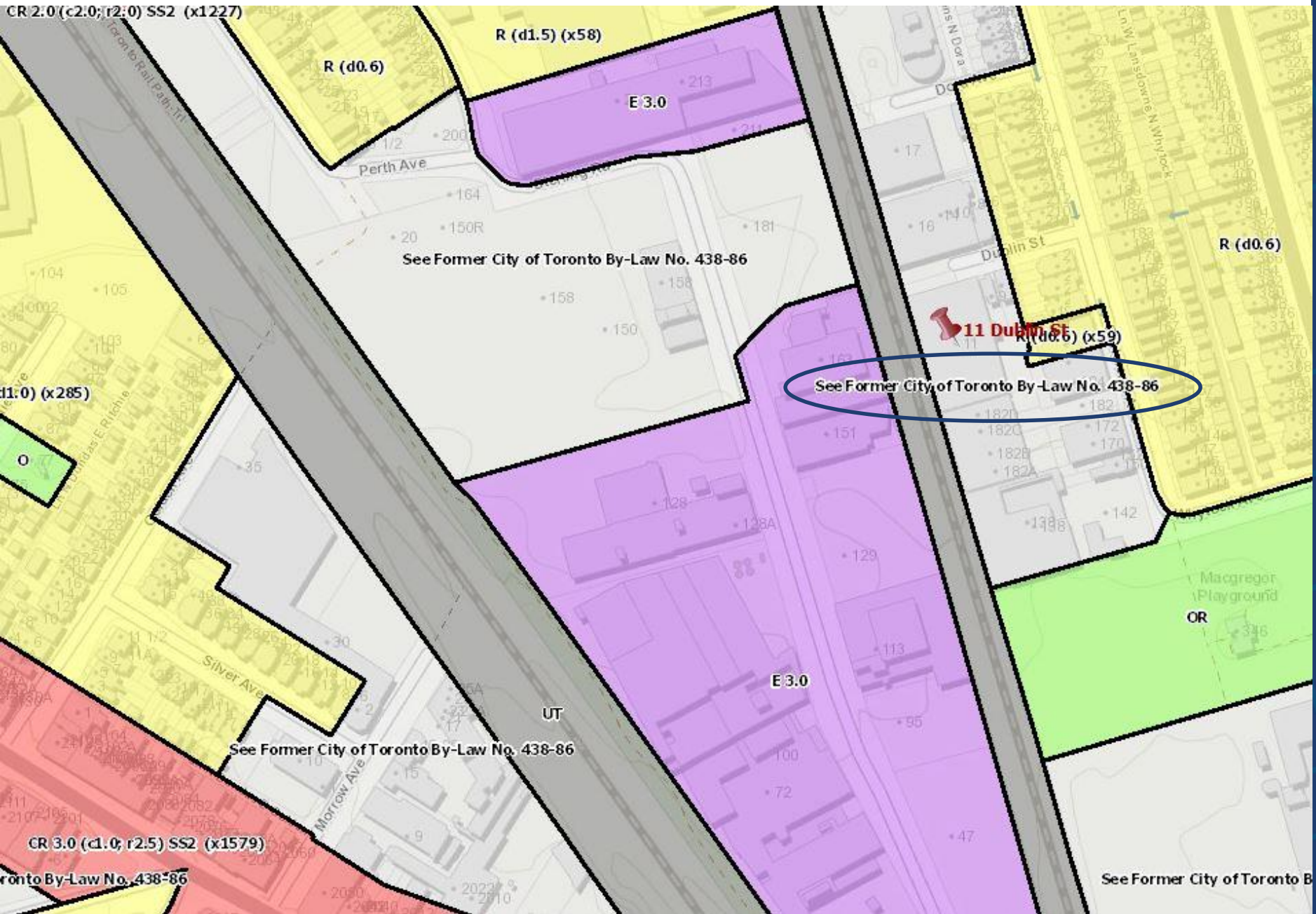
AREA MAP



AREA MAP

11 DUBLIN STREET | FOR SALE

Zoning: See former City of Toronto By-Law No. 438-86



ZONING MAP



METROPOLITAN COMMERCIAL

626 King St West, Suite 302
Toronto, ON
M5V 1M7

www.metcomrealty.com

CONTACT:

MING ZEE**

Principal, Broker of Record
416.703.6621 ext. 222
ming.zee@metcomrealty.com