

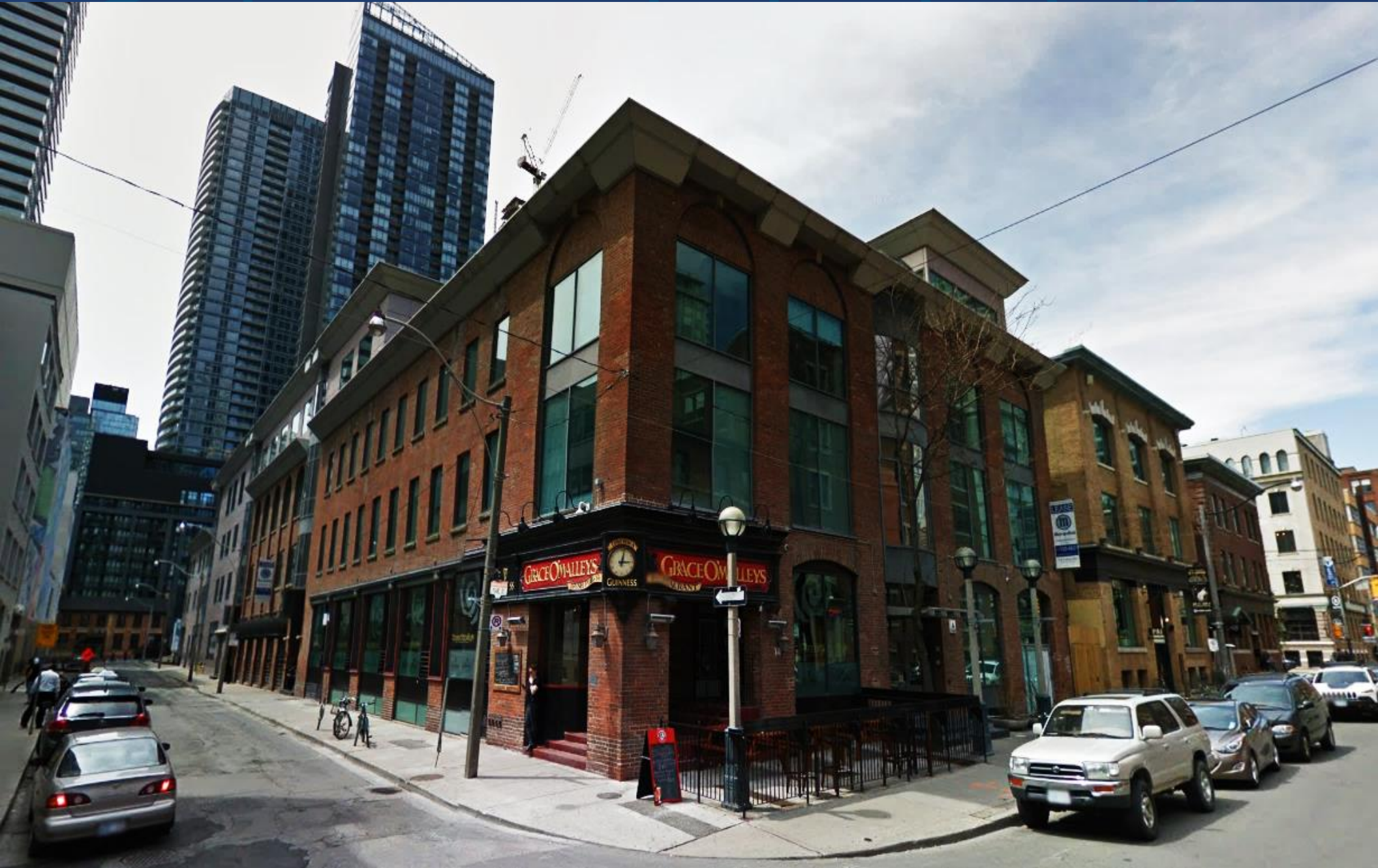
FOR LEASE | OFFICE SPACE

14 DUNCAN STREET

TORONTO | ON



METROPOLITAN
COMMERCIAL





DETAILS

| | |
|-------------------------|---|
| Location | West of University Avenue, North of King Street. Click Here for Map |
| Building Details | Suite 201A – 1,186 SF |
| Net Rental Rate | \$25.00 PSF/YR |
| Additional Rent | \$23.46 PSF/YR (2020) |
| Term | 3-5 Years |
| Possession | Immediate |

FEATURES

- Premium brick and beam building.
- Includes a reception, open space, 3 offices and a kitchenette.
- Easily accessible by TTC.
- Steps to financial core and the PATH.
- Limited on-site parking.



SECOND FLOOR





SUITE 201A PHOTOS

14 DUNCAN STREET | FOR LEASE



METROPOLITAN COMMERCIAL

626 King St West, Suite 302
Toronto, ON
M5V 1M7

www.metcomrealty.com

CONTACT:

TIM NOVAK*
Senior Vice President
416.703.6621 ext. 246
tim.novak@metcomrealty.com