

FOR LEASE | OFFICE SPACE

# 14 DUNCAN STREET

TORONTO, ON

**NEW  
RATE!**



# PROPERTY OVERVIEW



**Location** West of University Avenue, North of King Street. [Click Here for Map](#)

<b>Building Details</b>	<b>Suite</b>	<b>Area</b>	<b>Details</b>
	LL 1 + 2	3, 555 SF	Available Oct 1, 2022
	200	845 SF	Open concept with kitchenette
	203	2,386 SF	Reception, three office, kitchenette and open space
	205	1,876 SF	Open space with glass boardroom, 1 private office and kitchen
	209	2,186 SF	Two offices, boardroom, kitchenette and open space
	209A	1,281 SF	Can combine with Suite 209 for 3,467 SF
	302	7,460 SF	Partially furnished, with an elevator opens directly into the suite, furnished large glass boardroom, some existing furniture, TV monitors, 3 phone booths and a kitchen/lunch area

**Net Rental Rate** \$20.00 PSF/YR

**Additional Rent** \$22.40 PSF/YR

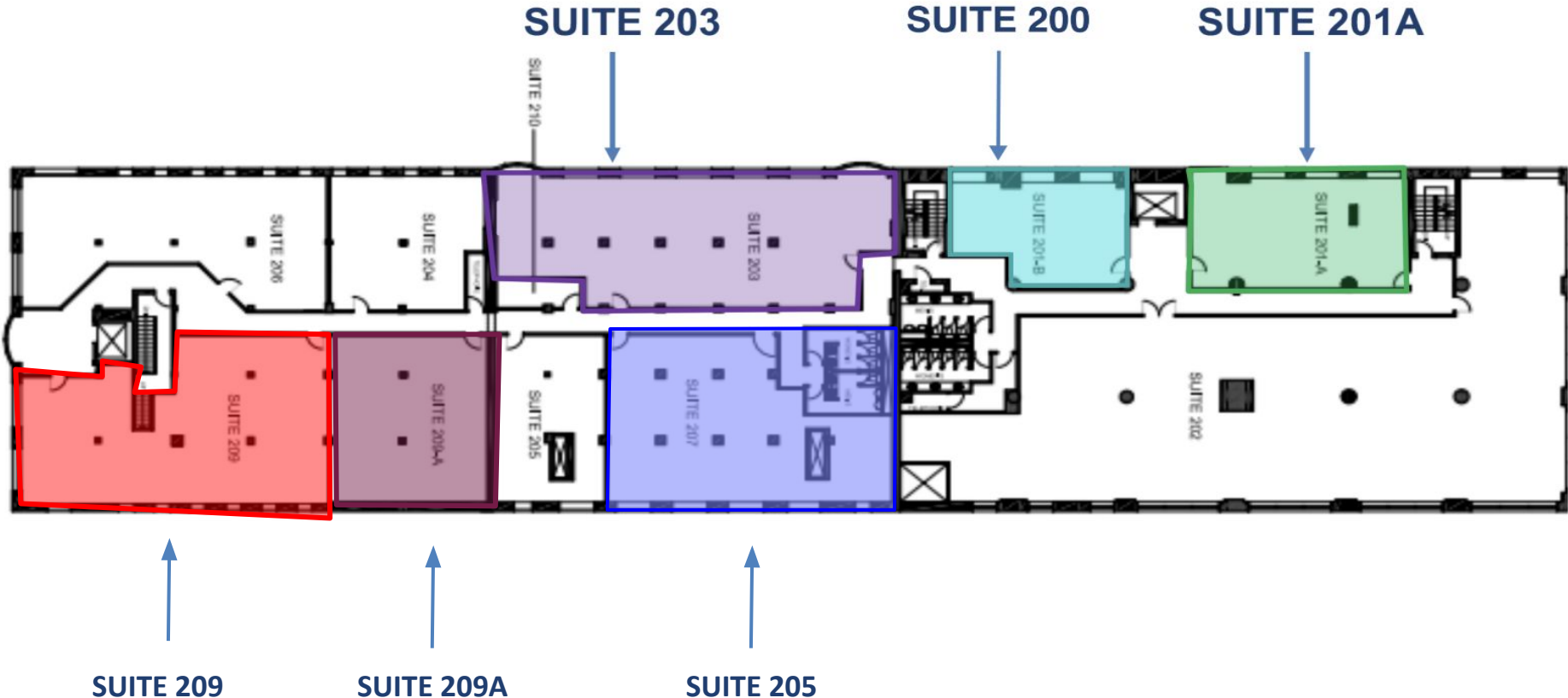
**Term** 3-10 Years

**Possession** Immediate

- Premium brick and beam building, limited on-site parking.
- Includes a reception, open space, 3 offices and a kitchenette.
- Easily accessible by TTC, steps to financial core and the PATH.
- Net rental rates are on a “as is” basis

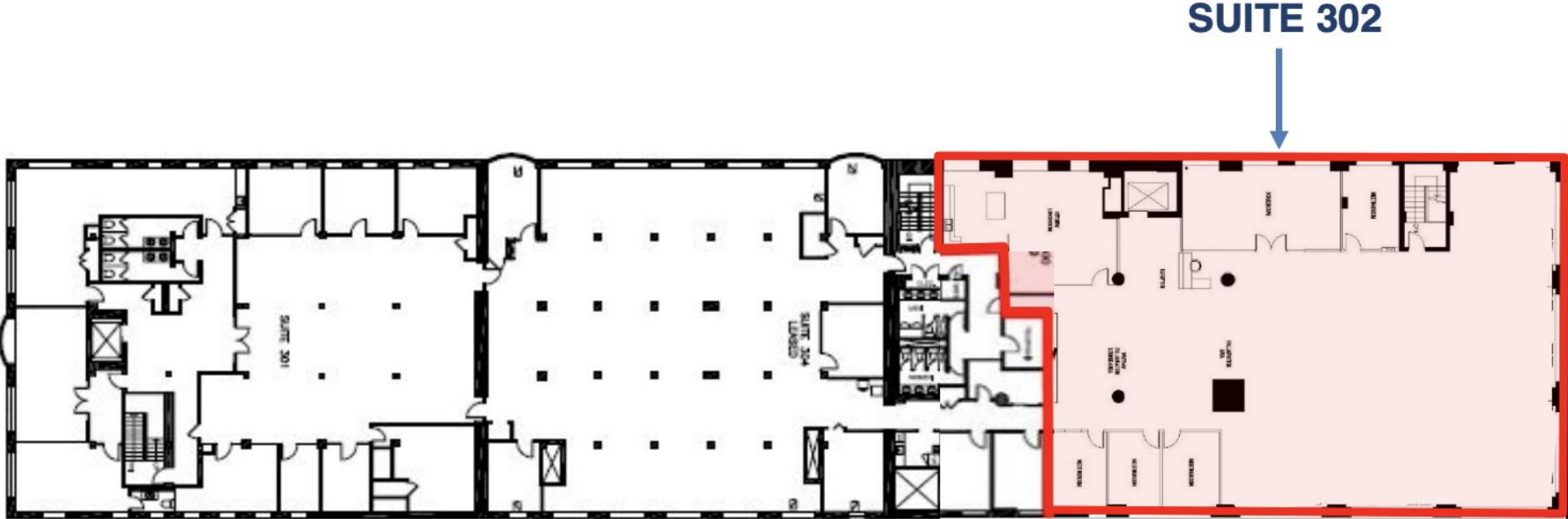
**14 DUNCAN STREET | FOR LEASE**

# FLOOR PLAN - SECOND FLOOR

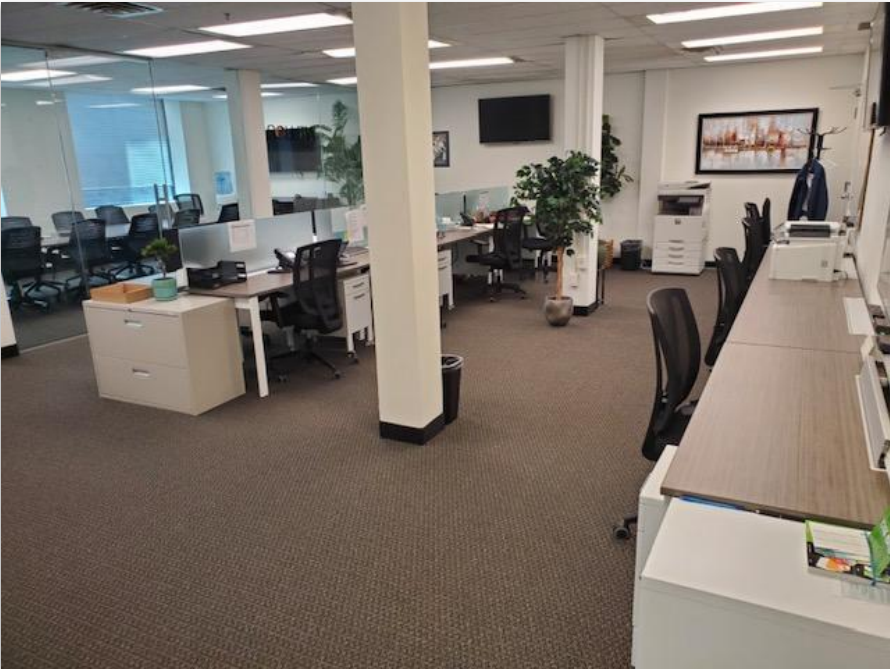




# FLOOR PLAN - THIRD FLOOR



# PHOTOS



14 DUNCAN STREET | FOR LEASE



# PHOTOS - UNIT 302



14 DUNCAN STREET | FOR LEASE



# METROPOLITAN COMMERCIAL

**TIM NOVAK\***

Senior Vice President

416.703.6621 ext. 246

[tim.novak@metcomrealty.com](mailto:tim.novak@metcomrealty.com)

150 Beverley St, Unit 1

Toronto, ON M5T 1Y5