

FOR LEASE | OFFICE SPACE

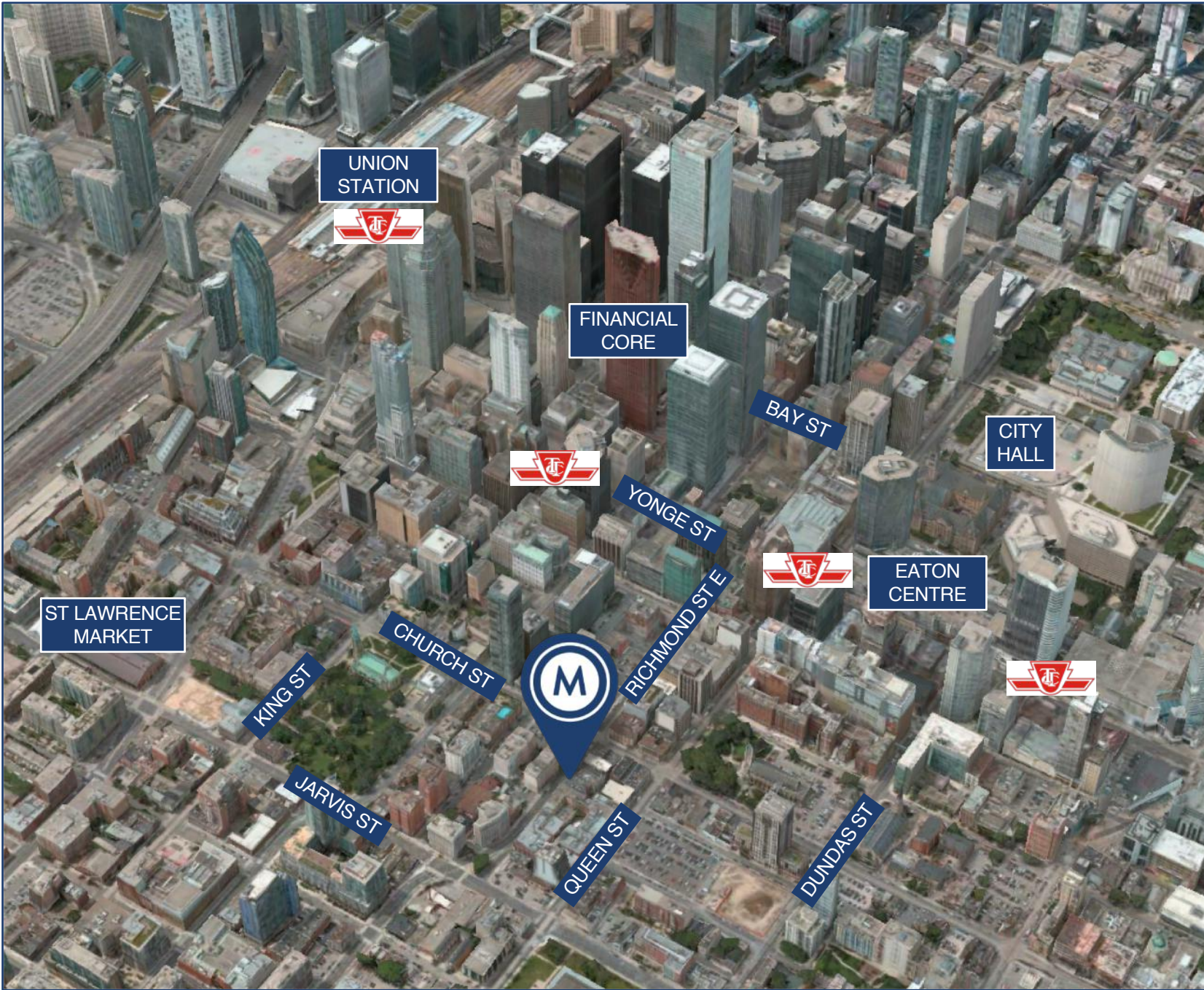
76 RICHMOND STREET EAST

TORONTO | ON



METROPOLITAN
COMMERCIAL





76 RICHMOND STREET EAST | FOR LEASE



AERIAL



DETAILS

Unit Size	Unit 350 - 1,520 SF Unit 420 - 1,350 SF
Base Rent	\$42.50 PSF/YR Semi-Gross
Monthly Rent	Unit 350 - \$5,384 /Month Semi-Gross Unit 420 - \$4,782 /Month Semi-Gross
Additional Rent	Utilities
Term	2-5 Years
Possession	Immediate

FEATURES

With 35 feet of frontage on the north side of Richmond Street East, this character brick & beam building is centrally located at the high traffic intersection of Richmond Street East and Church Street. The building features, exposed wood ceiling & columns and is currently undergoing substantial improvements to the interior and exterior of the building.

The available spaces features an open concept office with 13' ceilings, skylight, large windows, is fully air conditioned and has freight elevator access. The suites also contains a private bathroom and private kitchenette. There is an abundance of neighbourhood parking and the building's security features include controlled access and CCTV cameras.

76 RICHMOND STREET EAST | FOR LEASE



SECOND LEVEL

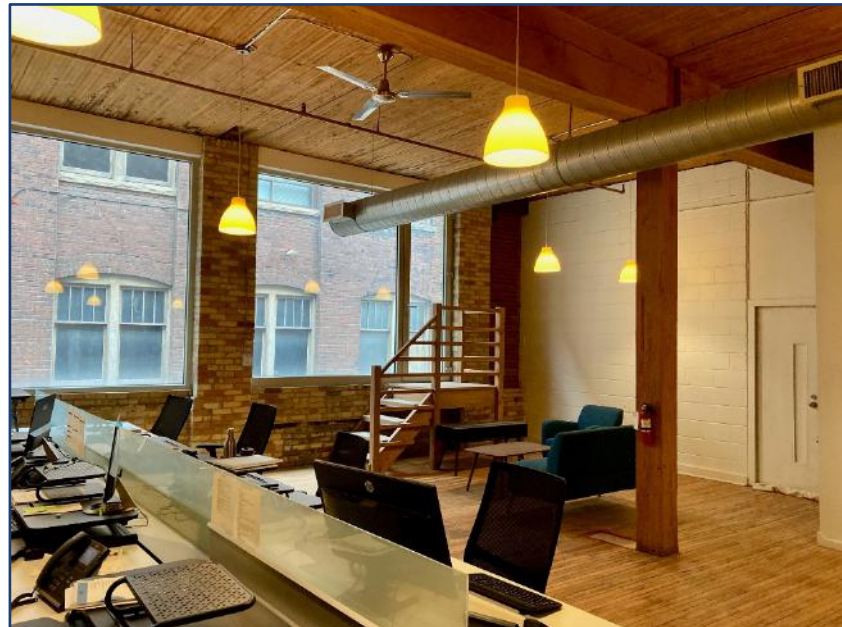
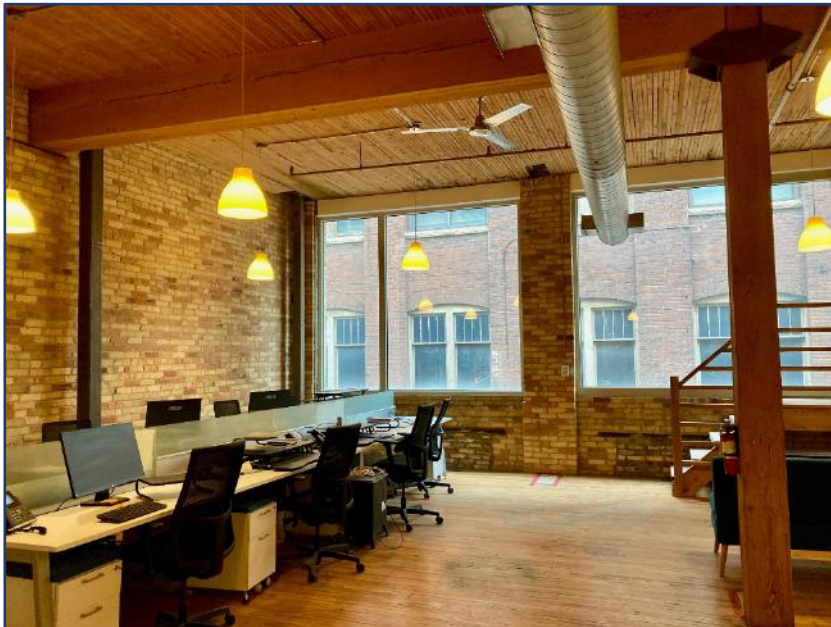


76 RICHMOND STREET EAST | FOR LEASE



FLOOR PLAN

Suite 350

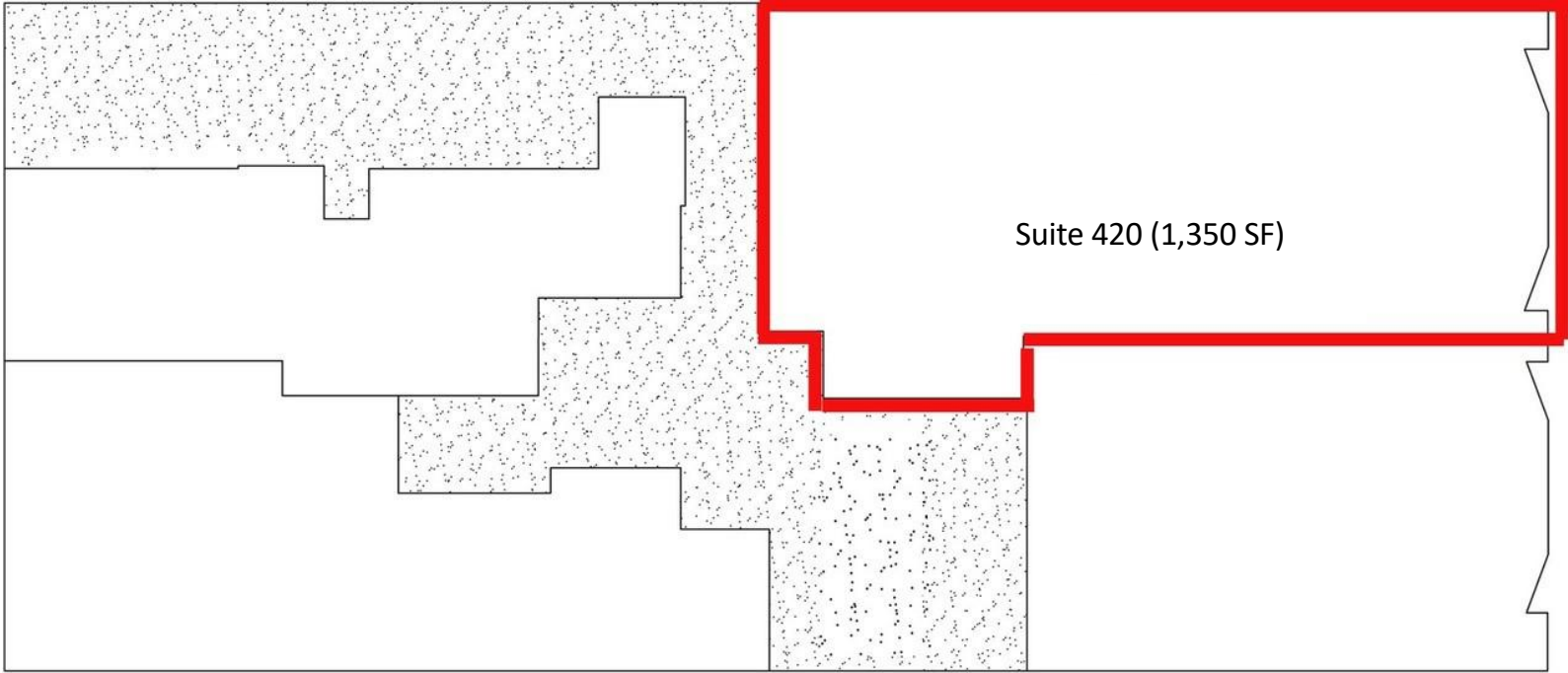


76 RICHMOND STREET EAST | FOR LEASE



PHOTOS

THIRD LEVEL



Suite 420



76 RICHMOND STREET EAST | FOR LEASE



PHOTOS



METROPOLITAN COMMERCIAL

626 King St West, Suite 302
Toronto, ON
M5V 1M7

www.metcomrealty.com

CONTACT:

Kevin Tuttle, Broker

416.703.6621 x 227

kevin.tuttle@metcomrealty.com