

FOR LEASE | OFFICE SPACE

76 RICHMOND STREET EAST

TORONTO | ON



METROPOLITAN
COMMERCIAL





AERIAL

76 RICHMOND STREET EAST | FOR LEASE



DETAILS

Unit Size	1,520 SF
Base Rent	\$5,384 /Month Semi-Gross
Additional Rent	Utilities
Term	2-5 Years
Possession	Unit 350: Immediate

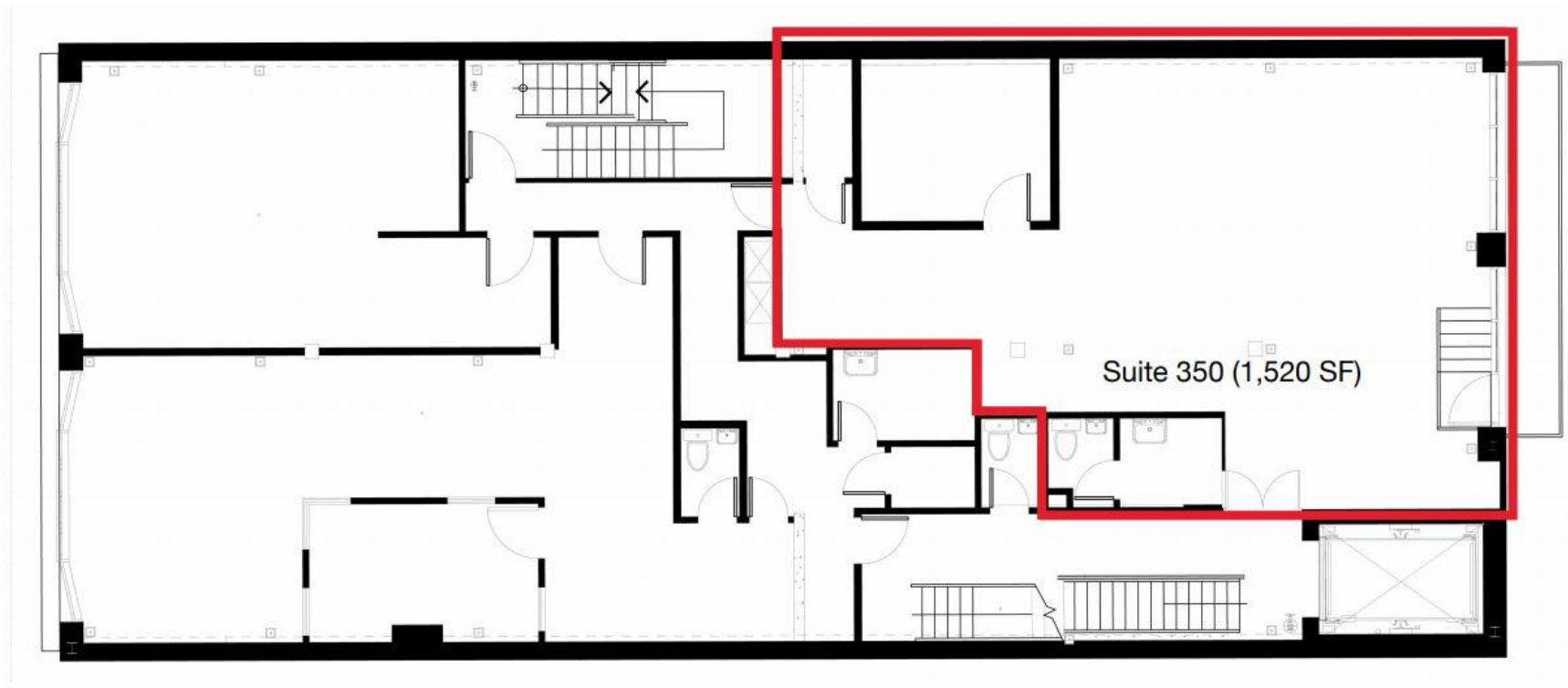
FEATURES

With 35 feet of frontage on the north side of Richmond Street East, this character brick & beam building is centrally located at the high traffic intersection of Richmond Street East and Church Street. The building features, exposed wood ceiling & columns and is currently undergoing substantial improvements to the interior and exterior of the building.

The available space features an open concept office with 13' ceilings, skylight, large windows, is fully air conditioned and has freight elevator access. There is an abundance of neighbourhood parking and the building's security features include controlled access and CCTV cameras.



THIRD FLOOR





METROPOLITAN COMMERCIAL

626 King St West, Suite 302
Toronto, ON
M5V 1M7

www.metcomrealty.com

CONTACT:

Kevin Tuttle*

416.703.6621 x 227

kevin.tuttle@metcomrealty.com