

FOR LEASE

# 1444 DUPONT STREET – UNIT 20

TORONTO | ON



METROPOLITAN  
COMMERCIAL





## DETAILS

---

Location	Just West of Lansdowne Avenue. <a href="#">Click Here for Map</a>
Building Area	3,200 SF (approx.)
Rental Rate	\$9,000.00 /Month Net
Additional Rent	\$1,830.28 T.M.I. /Month + Gas & Hydro
Possession	Immediate

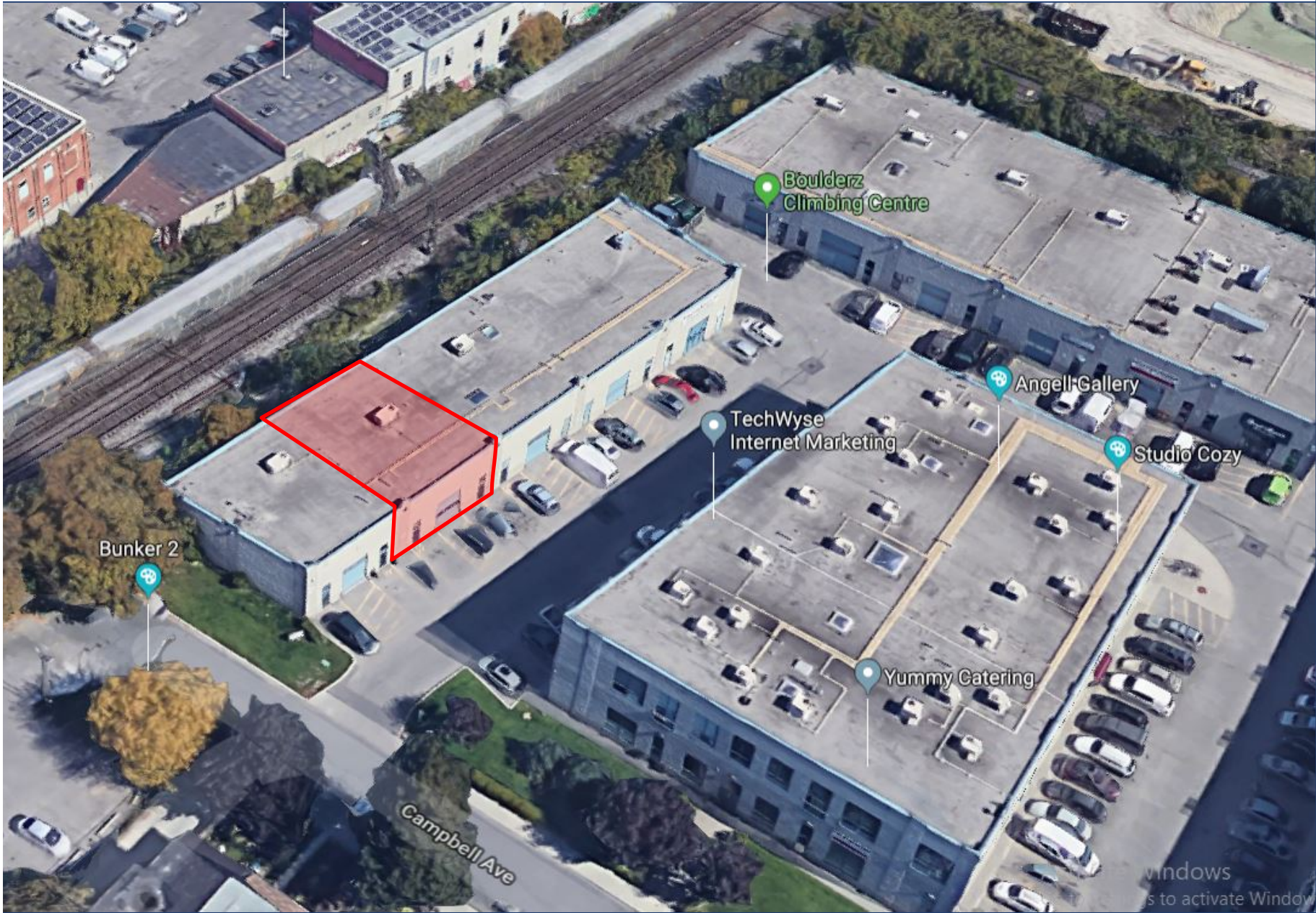
## FEATURES

---

- Commercial condominium, ideal for office, light manufacturing, creative space.
- Surface parking out front of unit (non-reserved).
- Two storey, main floor with 2<sup>nd</sup> floor mezzanine.
- Set of washrooms per floor.
- Large drive-in door and two entrance doors.
- Kitchenette and coffee bar.
- **Unit is also for sale (speak to Agent)**



AERIAL MAP



1444 DUPONT STREET – UNIT 20 | FOR LEASE

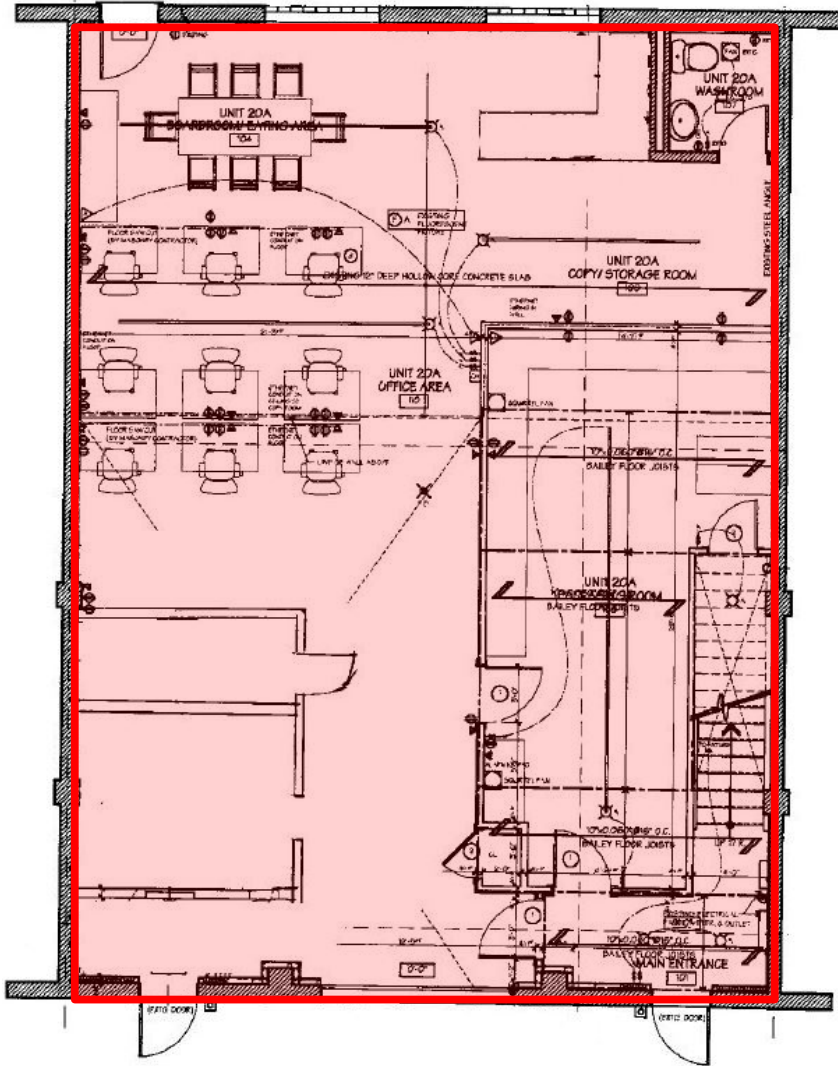


PHOTOS

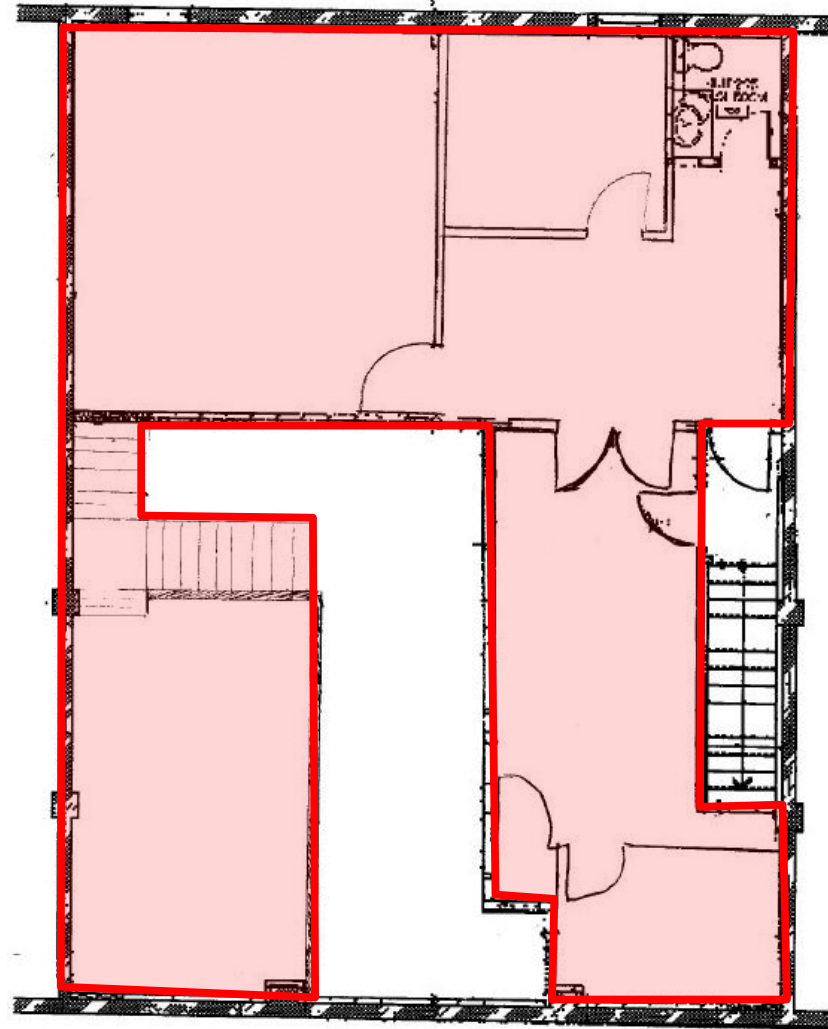
1444 DUPONT STREET – UNIT 20 | FOR LEASE



## FIRST FLOOR



## SECOND FLOOR





# METROPOLITAN COMMERCIAL

626 King St West, Suite 302  
Toronto, ON  
M5V 1M7

[www.metcomrealty.com](http://www.metcomrealty.com)

## CONTACT:

**TIM NOVAK\***  
Senior Vice President  
W. 416.703.6621 ext. 246  
[tim.novak@metcomrealty.com](mailto:tim.novak@metcomrealty.com)

**PAUK KOTYK\***  
M. 416.890.0324  
W. 416.703.6621 ext. 245  
[paul.kotyk@metcomrealty.com](mailto:paul.kotyk@metcomrealty.com)