

FOR LEASE

1444 DUPONT STREET – UNIT 20

TORONTO | ON



METROPOLITAN
COMMERCIAL



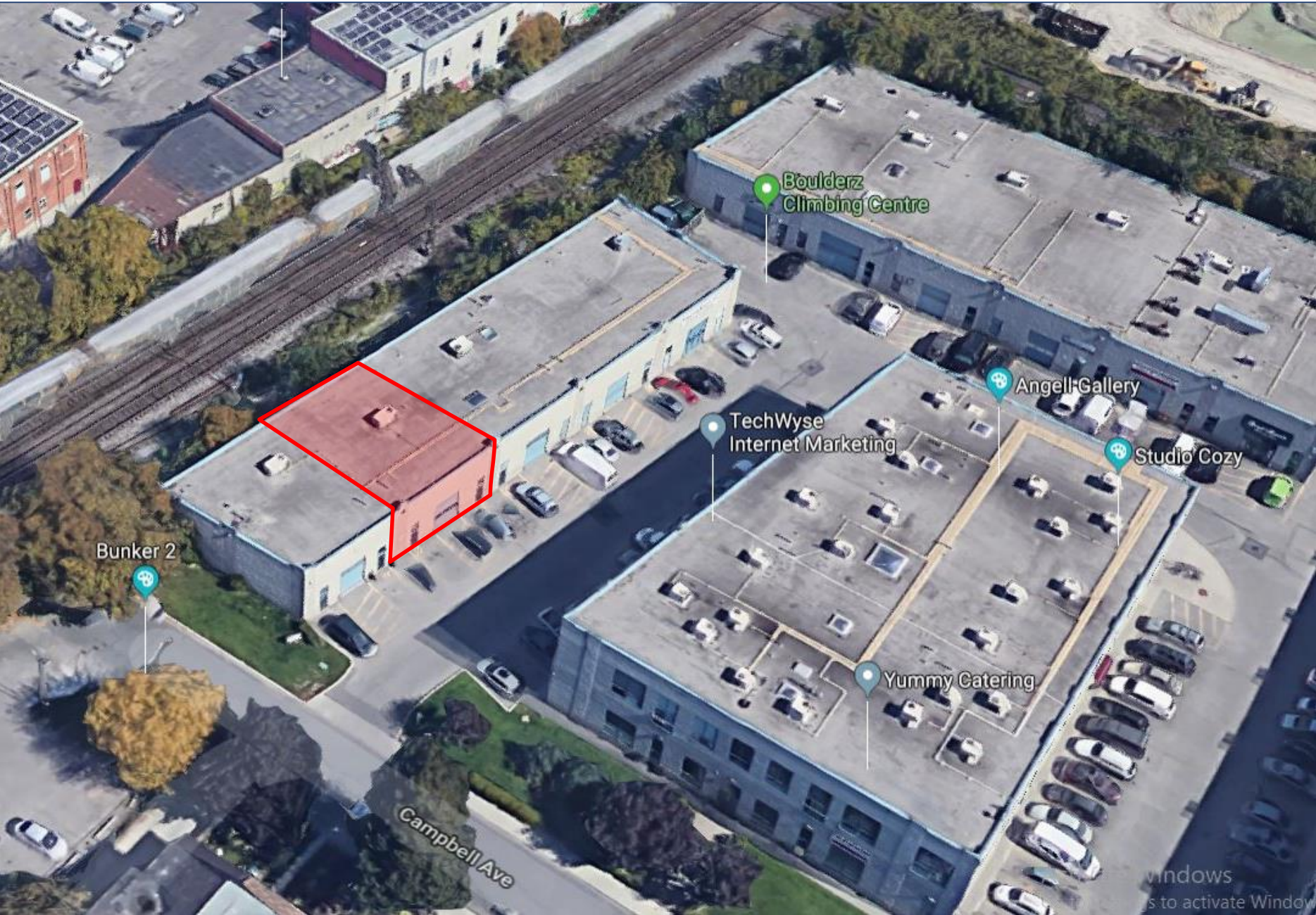


DETAILS

Location	Just West of Lansdowne Avenue. Click Here for Map
Building Area	3,200 SF (approx.)
Rental Rate	\$7,500.00 /Month Net
Additional Rent	\$1,830.28 T.M.I. /Month + Gas & Hydro
Possession	Immediate

FEATURES

- Commercial condominium, ideal for office, light manufacturing, creative space.
- Surface parking out front of unit (non-reserved).
- Two storey, main floor with 2nd floor mezzanine.
- Set of washrooms per floor.
- Large drive-in door and two entrance doors.
- Kitchenette and coffee bar.
- **Unit is also for sale (speak to Agent)**



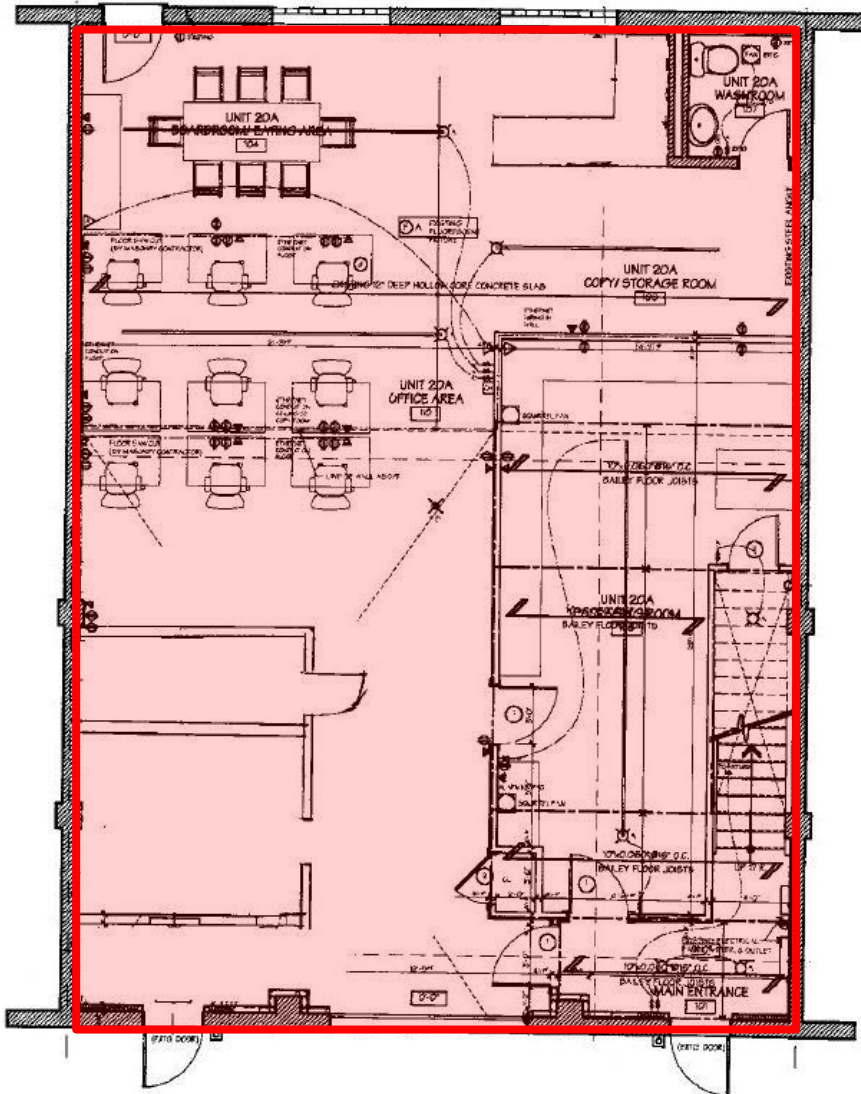
1444 DUPONT STREET – UNIT 20 | FOR LEASE



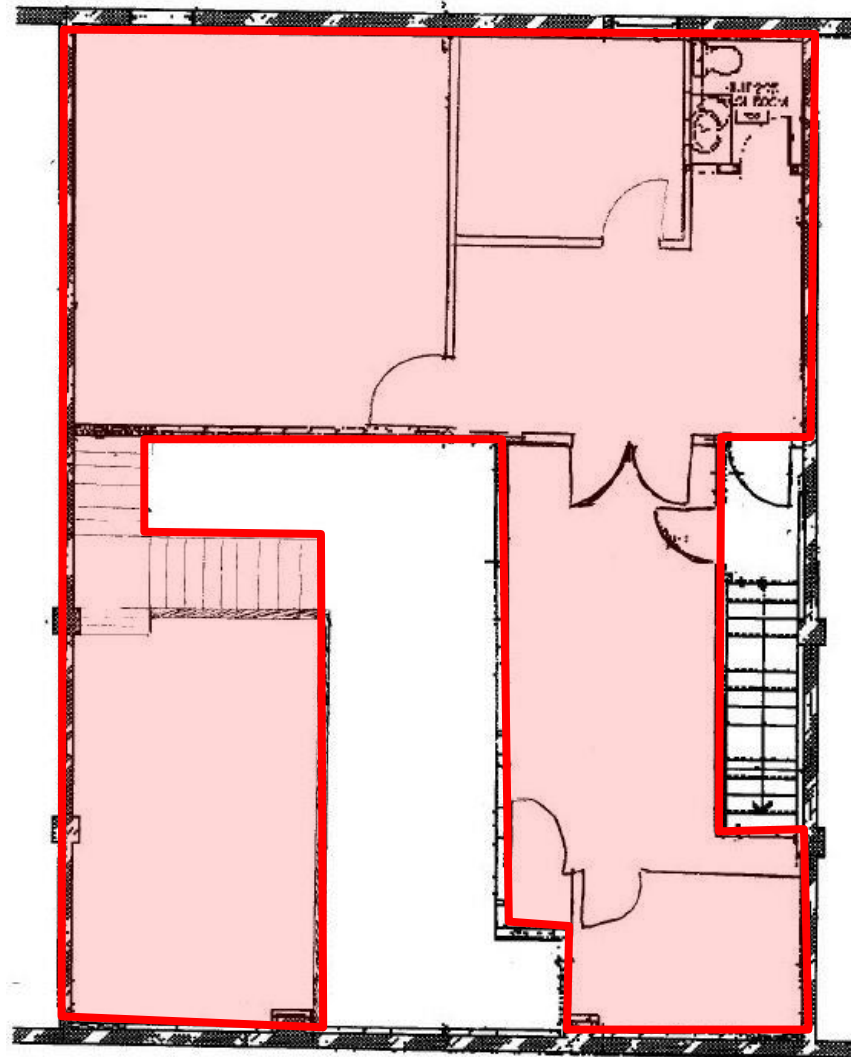
PHOTOS



FIRST FLOOR



SECOND FLOOR



FLOOR PLANS



METROPOLITAN COMMERCIAL

626 King St West, Suite 302
Toronto, ON
M5V 1M7

www.metcomrealty.com

CONTACT:

TIM NOVAK*

Senior Vice President
W. 416.703.6621 ext. 246
tim.novak@metcomrealty.com

PAUK KOTYK*

M. 416.890.0324
W. 416.703.6621 ext. 245
paul.kotyk@metcomrealty.com