

FOR LEASE

1444 DUPONT STREET – UNIT 27

TORONTO | ON



METROPOLITAN
COMMERCIAL





DETAILS

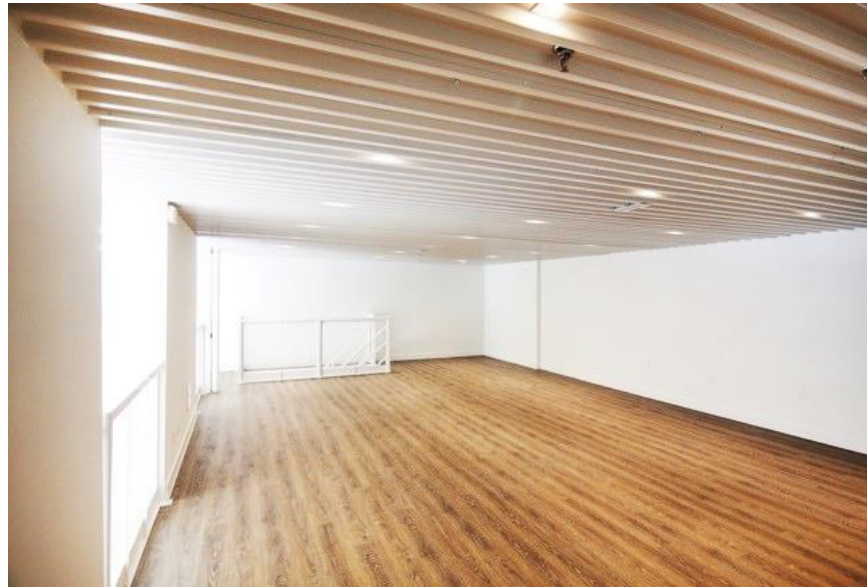
Location	Just West of Lansdowne Avenue. Click Here for Map	
Building Area	Unit 27: 2,272 SF	
Net Rental Rate	\$23.00/PSF	} \$29.86
Additional Rent	\$6.86/PSF + Gas & Hydro	
Possession	Immediate	

FEATURES

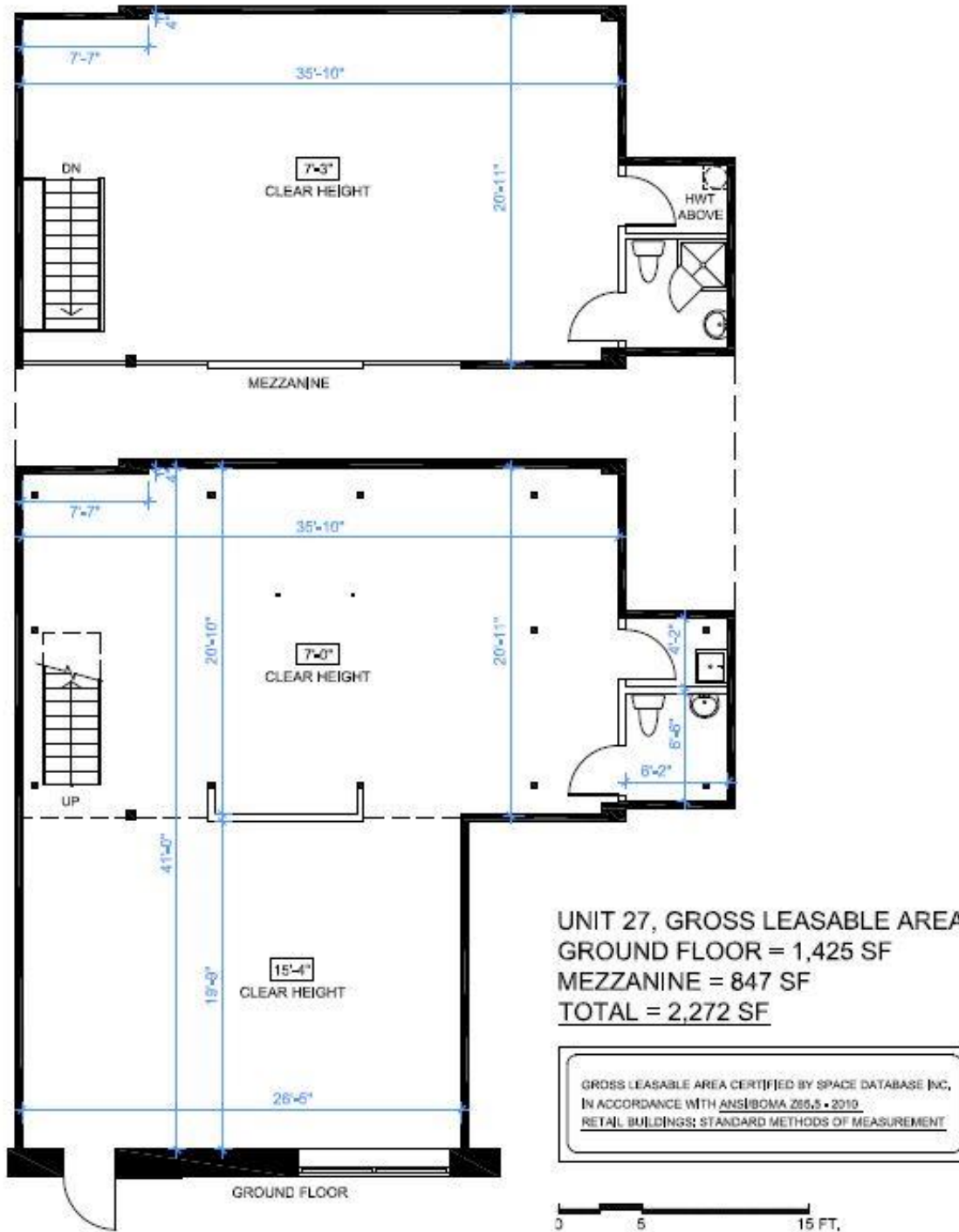
- Commercial condo with 17ft ceilings.
- Surface parking out front of unit (non-reserved).
- Main floor is 1,425 SF with a 847 SF mezzanine.
- Includes two washrooms and a kitchenette.



PHOTOS



1444 DUPONT STREET – UNIT 27 | FOR LEASE





METROPOLITAN COMMERCIAL

626 King St West, Suite 302
Toronto, ON
M5V 1M7

www.metcomrealty.com

CONTACT:

TIM NOVAK*

Senior Vice President
W. 416.703.6621 ext. 246
tim.novak@metcomrealty.com

PAUK KOTYK*

M. 416.890.0324
W. 416.703.6621 ext. 245
paul.kotyk@metcomrealty.com