

FOR LEASE | PURMAN BUILDING

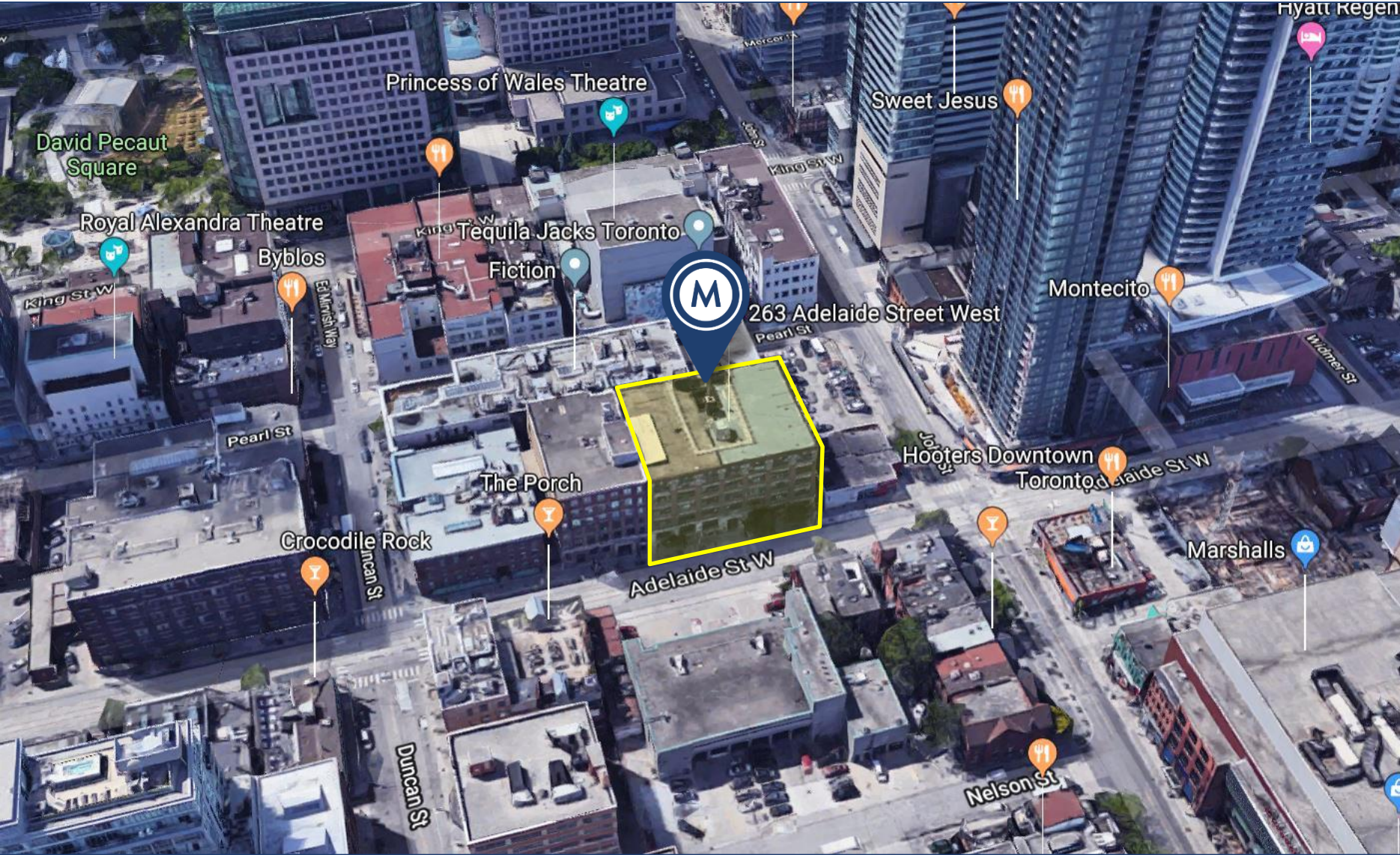
# 263 ADELAIDE STREET WEST

TORONTO, ON



METROPOLITAN  
COMMERCIAL





AREA MAP



## DETAILS

---

**Location** SE Block of John St and Adelaide St W, in the heart of the Entertainment District.

[Click Here for Map](#)

<b>Building Details</b>	<u>Unit #</u>	<u>Size (SF)</u>	<u>All-In Monthly Rental Rate</u>
	Lower Level #1	5,845 SF	\$9,500
	Suite 101	5,805 SF (Divisible)	\$16,000
	Suite 204	2,258 SF	\$6,500
	Suite 206	1,137 SF	\$3,300
	Suite 400	352 SF	\$1,100
	Suite 401	565 SF	\$1,700
	Suite 407	1,288 SF	\$3,750
	Suite 404	2,210 SF	\$6,450

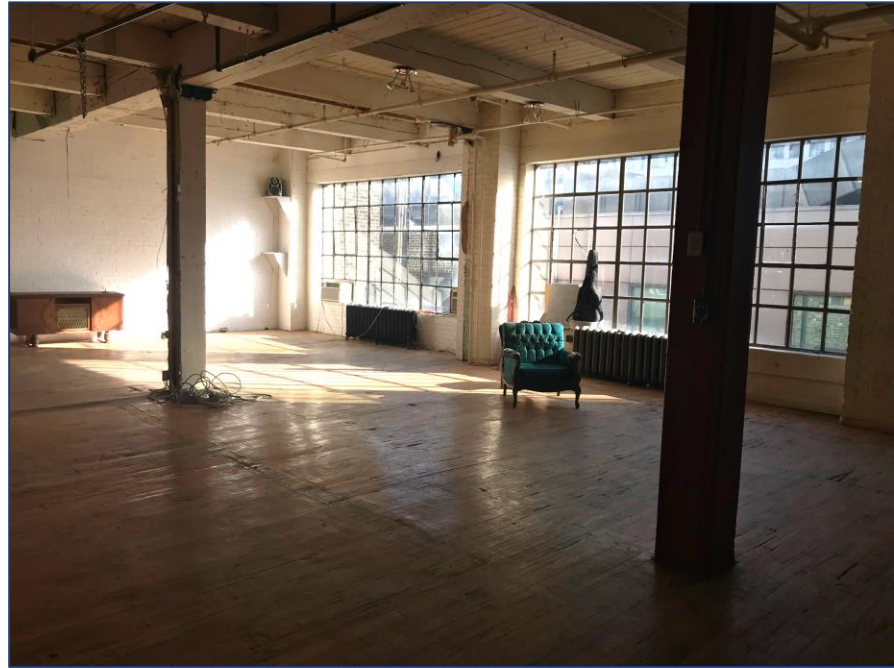
**Term** 1 Year

**Possession** Immediate

## FEATURES

---

- Classic brick & beam building
- High wood ceilings
- Hardwood flooring and exposed brick walls
- Inclusive of T.M.I. & utilities
- Alternative suites available – please inquire
- In-suite janitorial & HST in addition to monthly rental rate



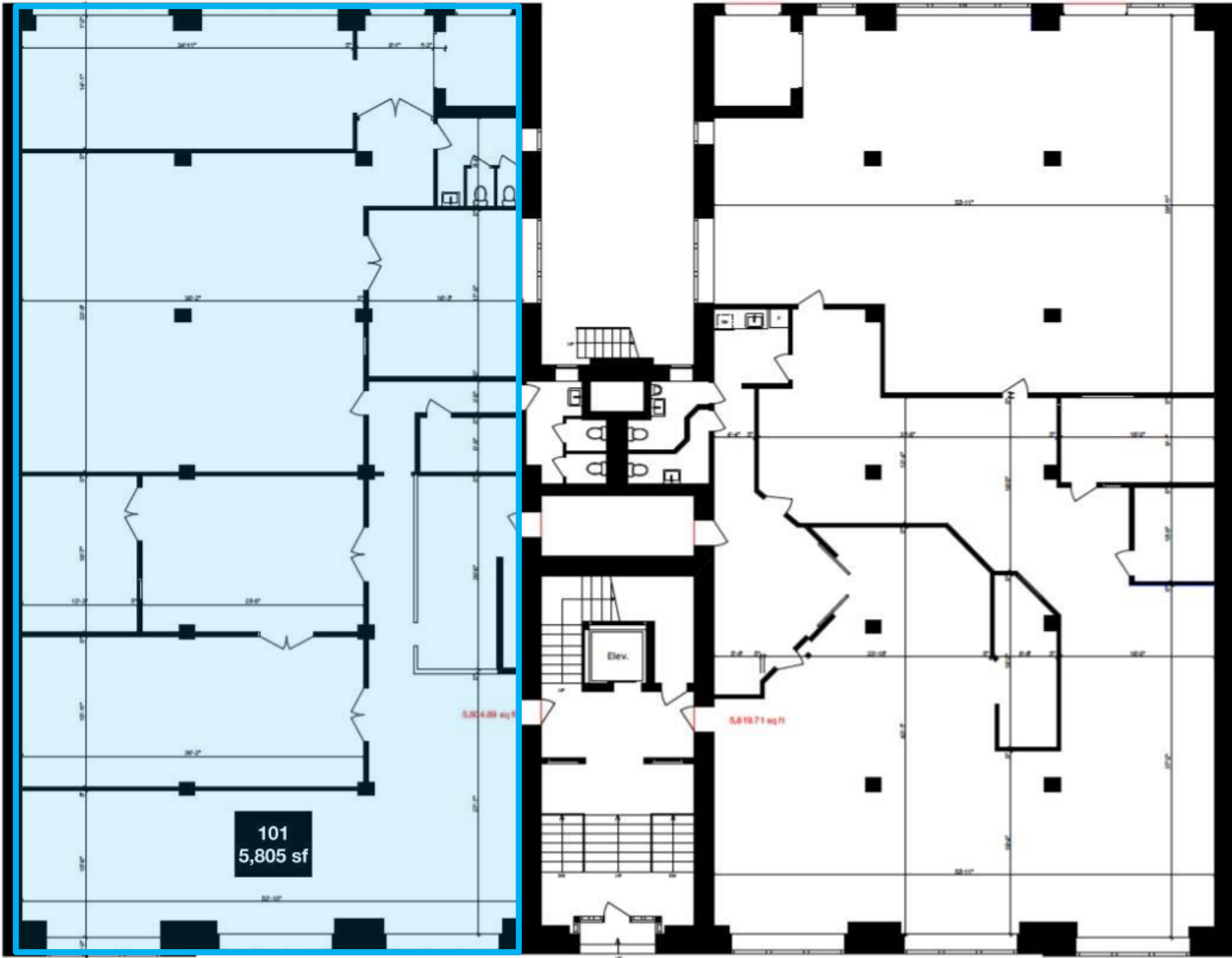
INTERIOR PHOTOS

# LOWER LEVEL

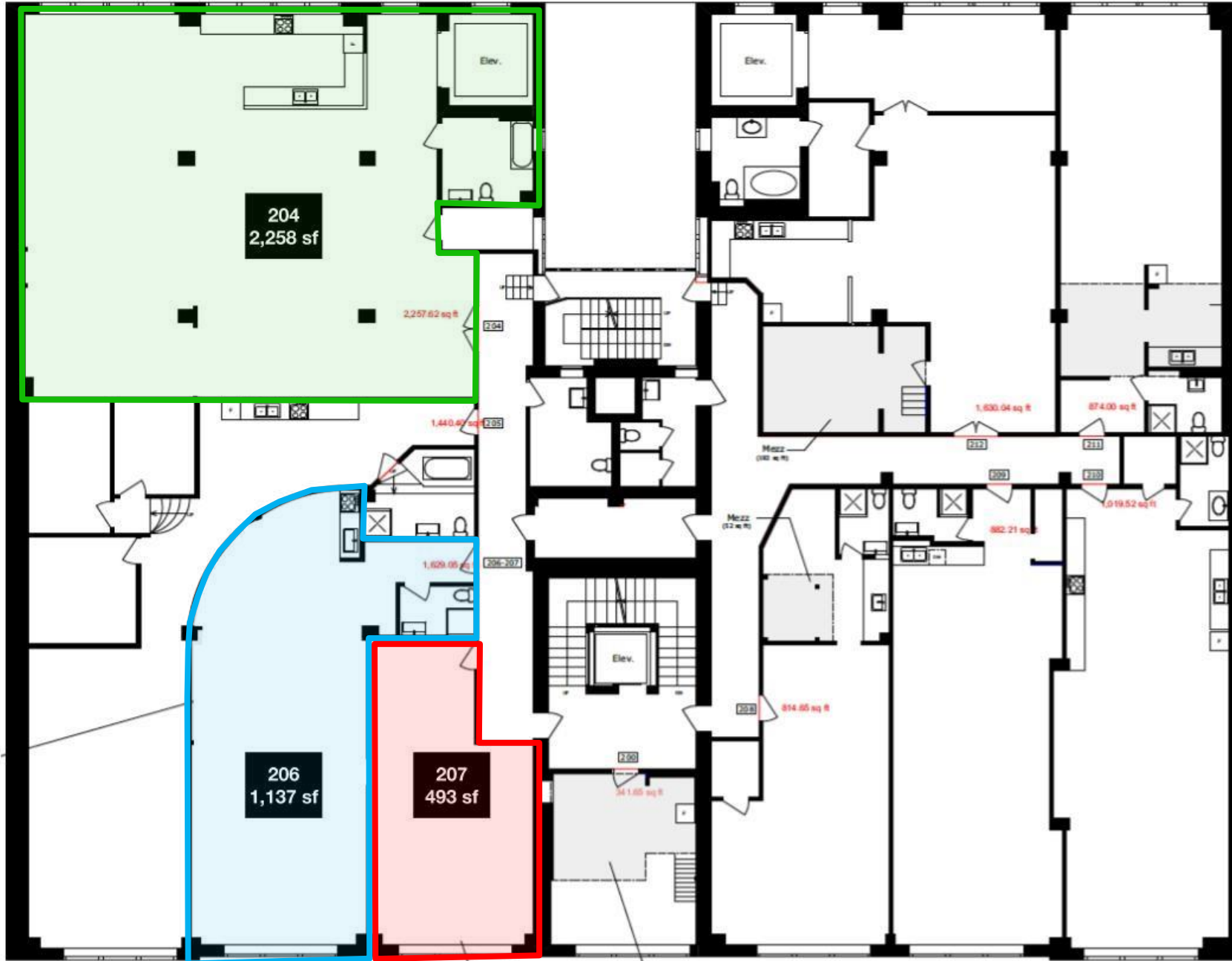


FLOOR PLANS

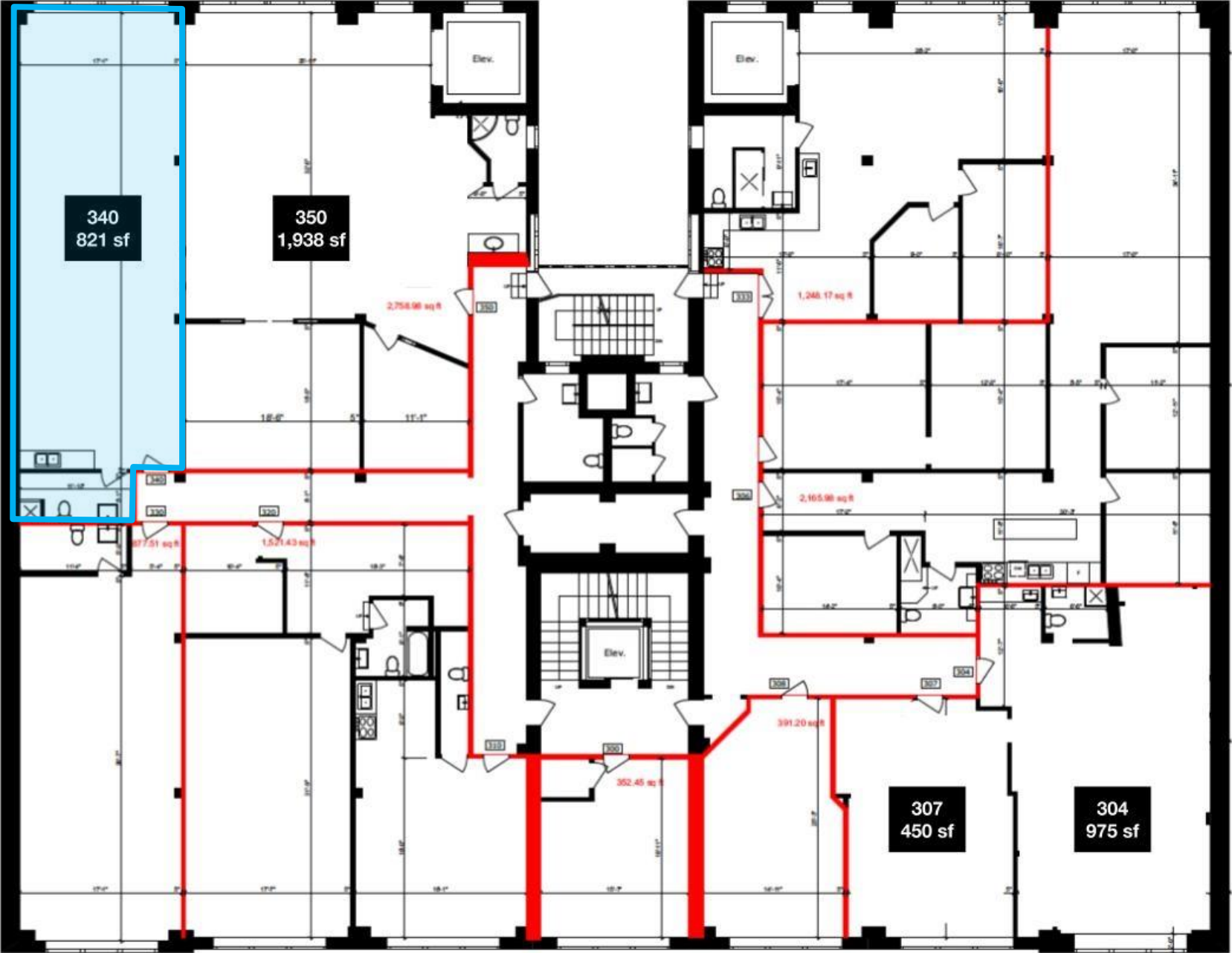
# FIRST FLOOR



# SECOND FLOOR



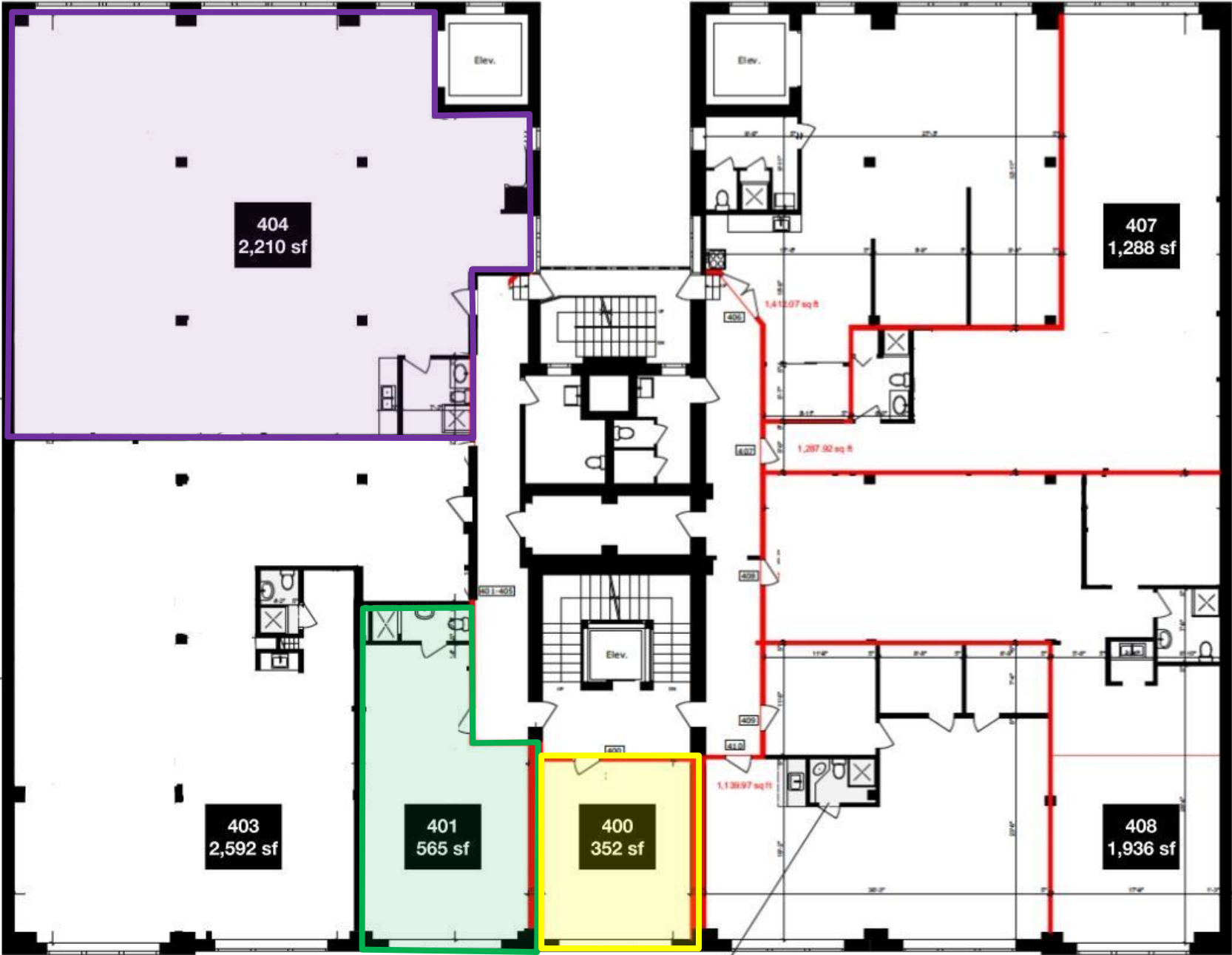
THIRD FLOOR



FLOOR PLANS



# FOURTH FLOOR



FLOOR PLANS



# METROPOLITAN COMMERCIAL

626 King St West, Suite 302  
Toronto, ON  
M5V 1M7

[www.metcomrealty.com](http://www.metcomrealty.com)

## CONTACT:

### Urban Commercial Advisory Group

<b>Amir Nourbakhsh*</b>	416.703.6621 x252	<a href="mailto:amir@metcomrealty.com">amir@metcomrealty.com</a>
<b>Anthony Martino*</b>	416.703.6621 x244	<a href="mailto:anthony.martino@metcomrealty.com">anthony.martino@metcomrealty.com</a>
<b>Jesse Roth*</b>	416.703.6621 x243	<a href="mailto:jesse.roth@metcomrealty.com">jesse.roth@metcomrealty.com</a>