

FOR LEASE | BRICK AND BEAM OFFICE SPACE

263 ADELAIDE STREET WEST

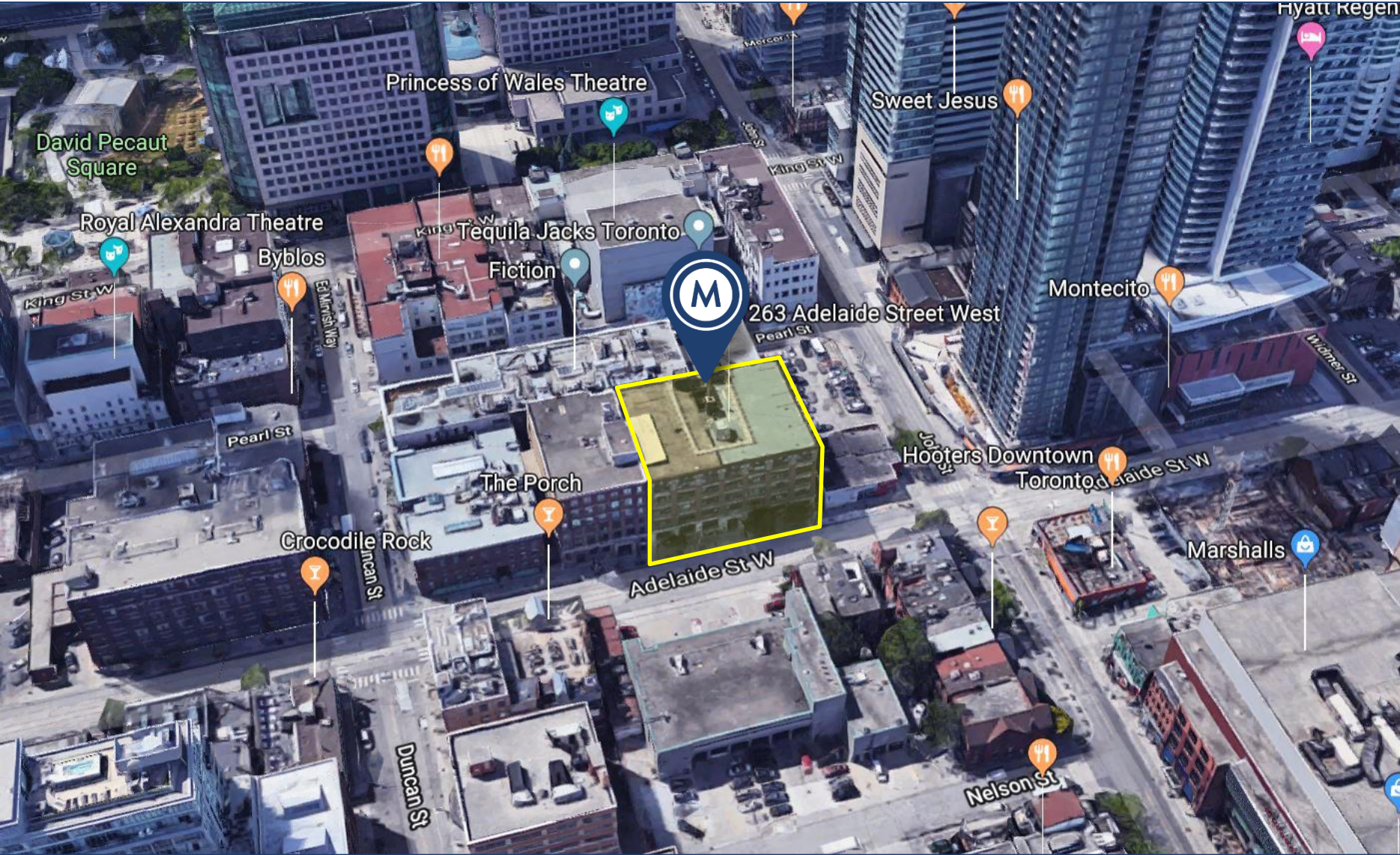
TORONTO, ON



METROPOLITAN
COMMERCIAL

SHORT TERM
AVAILABILITY





AREA MAP



DETAILS

Location SE Block of John St and Adelaide St W, in the heart of the Entertainment District.
[Click Here for Map](#)

Building Details	<u>Unit #</u>	<u>Size (SF)</u>	<u>All-In Monthly Rental Rate</u>
	Suite 320	1,029	\$2,700
	Suite 333	1,248	\$3,650 (Available June 15th)
	Suite 514	1,296	\$3,250

Term April 30th, 2020

Commission 1/2 Months Gross Rent

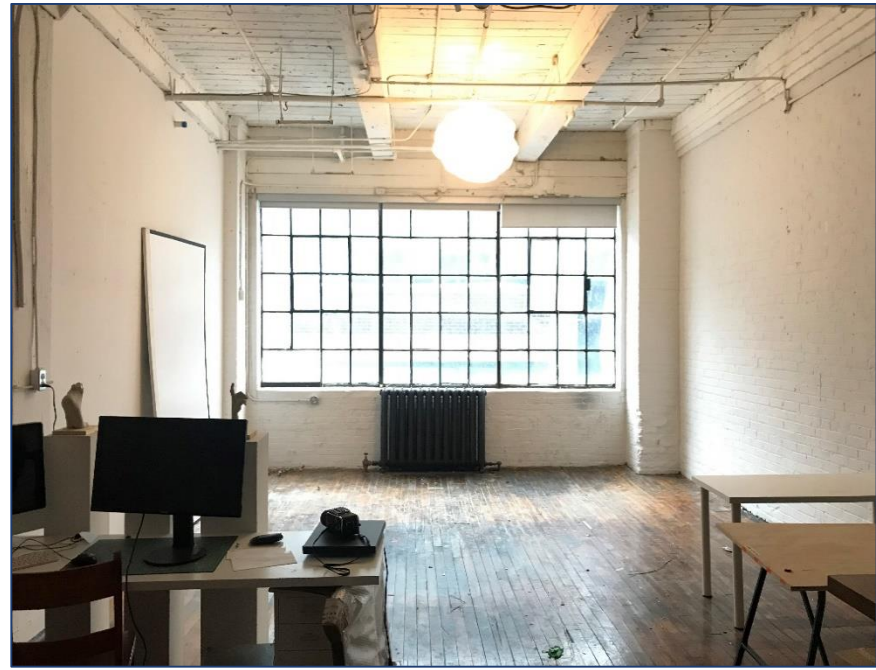
Possession Immediate

FEATURES

- Classic brick & beam building
- High wood ceilings
- Hardwood flooring and exposed brick walls
- Inclusive of T.M.I. & utilities
- In-suite janitorial & HST in addition to monthly rental rate



INTERIOR PHOTOS



THIRD FLOOR



FIFTH FLOOR





METROPOLITAN COMMERCIAL

626 King St West, Suite 302
Toronto, ON
M5V 1M7

www.metcomrealty.com

CONTACT:

Urban Commercial Advisory Group

Amir Nourbakhsh*	416.703.6621 x252	amir@metcomrealty.com
Anthony Martino*	416.703.6621 x244	anthony.martino@metcomrealty.com
Jesse Roth*	416.703.6621 x243	jesse.roth@metcomrealty.com