

FOR LEASE | BRICK AND BEAM OFFICE SPACE

263 ADELAIDE STREET WEST

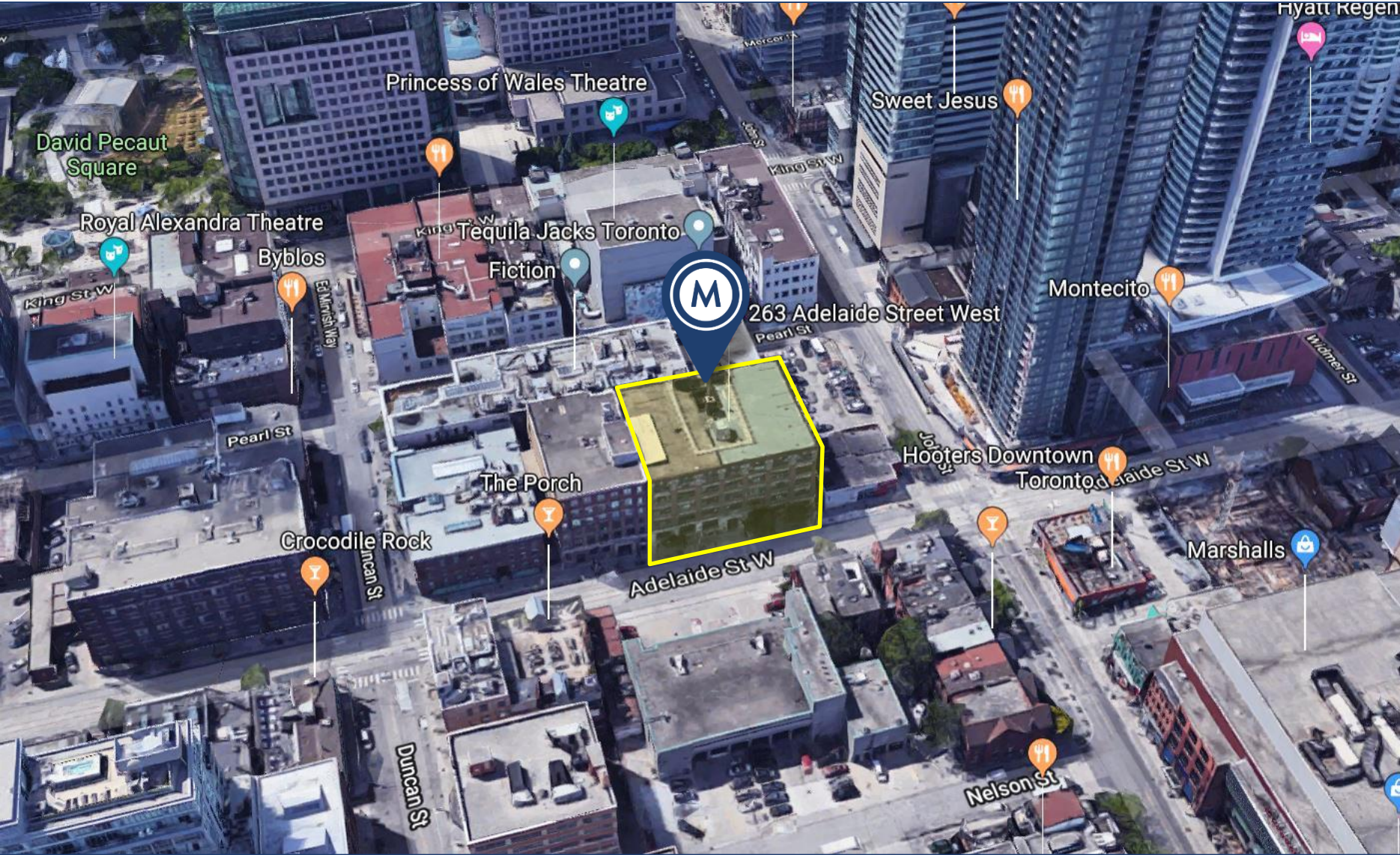
TORONTO, ON



METROPOLITAN
COMMERCIAL

SHORT TERM
AVAILABILITY





AREA MAP

DETAILS

Location SE Block of John St and Adelaide St W, in the heart of the Entertainment District. [Click Here for Map](#)

Building Details	<u>Unit #</u>	<u>Size (SF)</u>	<u>All-In Monthly Rental Rate</u>
	Suite 204	2,258	\$5,500
	Suite 206	1,137	LEASED
	Suite 210	1,020	LEASED
	Suite 211	874	LEASED
	Suite 310	492	LEASED
	Suite 320 (Possession is April 1st, 2019)	1,522	\$3,950
	Suite 330 (Possession is April 1st, 2019)	878	\$2,600
	Suite 350	1,938	LEASED
	Suite 406	1,412	\$3,600
	Suite 407	1,288	LEASED
	Suite 408	1,936	\$4,500
	Suite 409/410	1,140	LEASED
	Suite 510	355	LEASED
	Suite 511	665	LEASED
	Suite 512 (Possession is April 1st, 2019)	967	LEASED
	Suite 514 (Possession is April 1st, 2019)	1,296	\$3,500
	Suite 515 (Possession is April 1st, 2019)	1,231	\$3,300

Term 1 Year

Commission 1/2 Months Gross Rent

Possession See Marketing Flyer

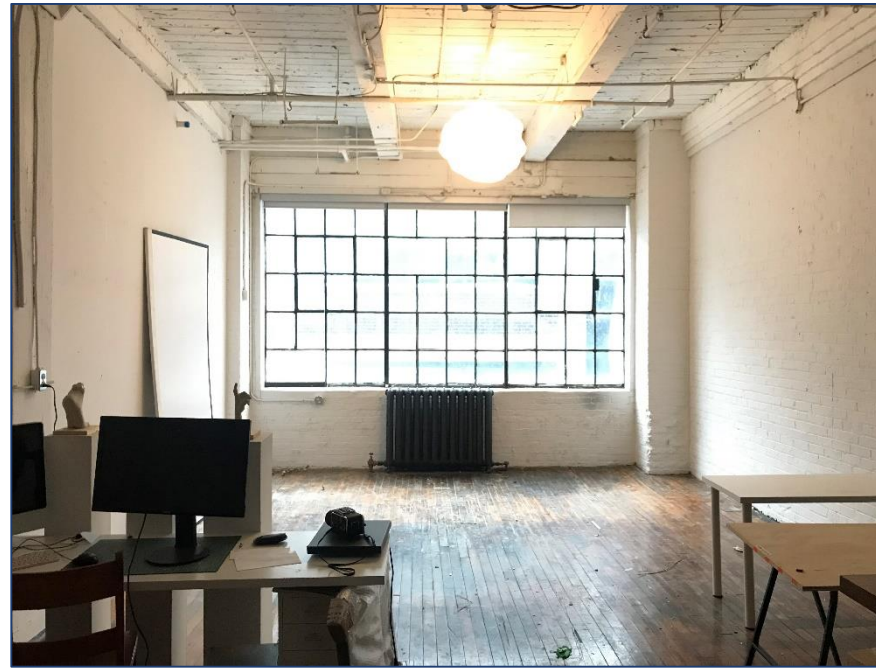
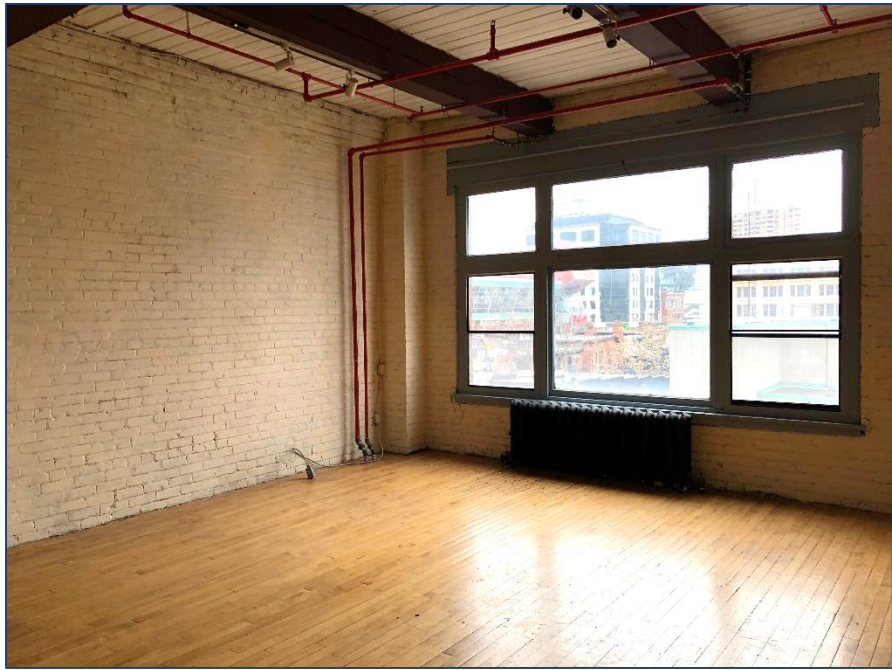
FEATURES

- Classic brick & beam building
- High wood ceilings
- Hardwood flooring and exposed brick walls
- Inclusive of T.M.I. & utilities
- In-suite janitorial & HST in addition to monthly rental rate





INTERIOR PHOTOS



SECOND FLOOR



FLOOR PLANS

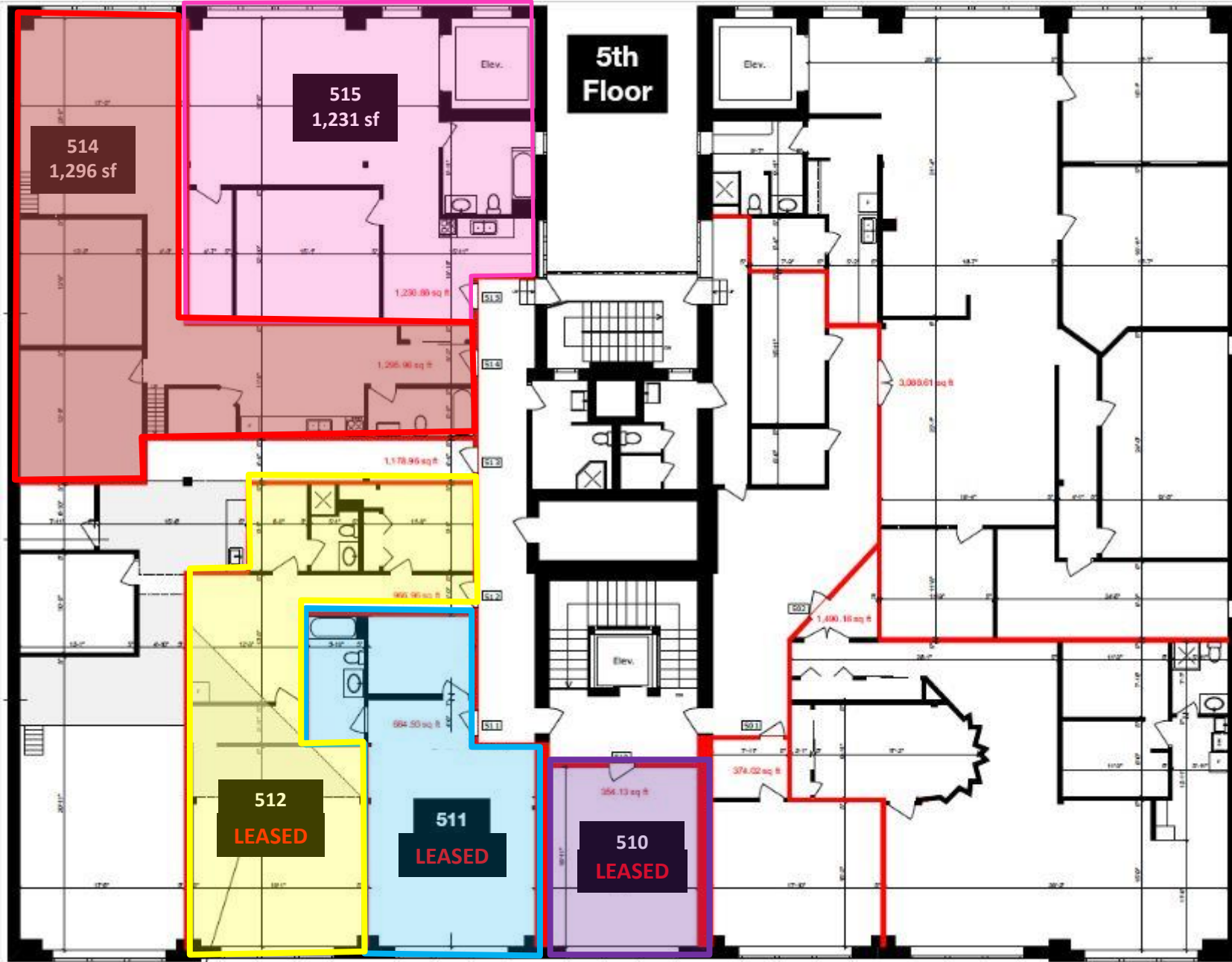
THIRD FLOOR



FOURTH FLOOR



FIFTH FLOOR





METROPOLITAN COMMERCIAL

626 King St West, Suite 302
Toronto, ON
M5V 1M7

www.metcomrealty.com

CONTACT:

Urban Commercial Advisory Group

Amir Nourbakhsh*	416.703.6621 x252	amir@metcomrealty.com
Anthony Martino*	416.703.6621 x244	anthony.martino@metcomrealty.com
Jesse Roth*	416.703.6621 x243	jesse.roth@metcomrealty.com