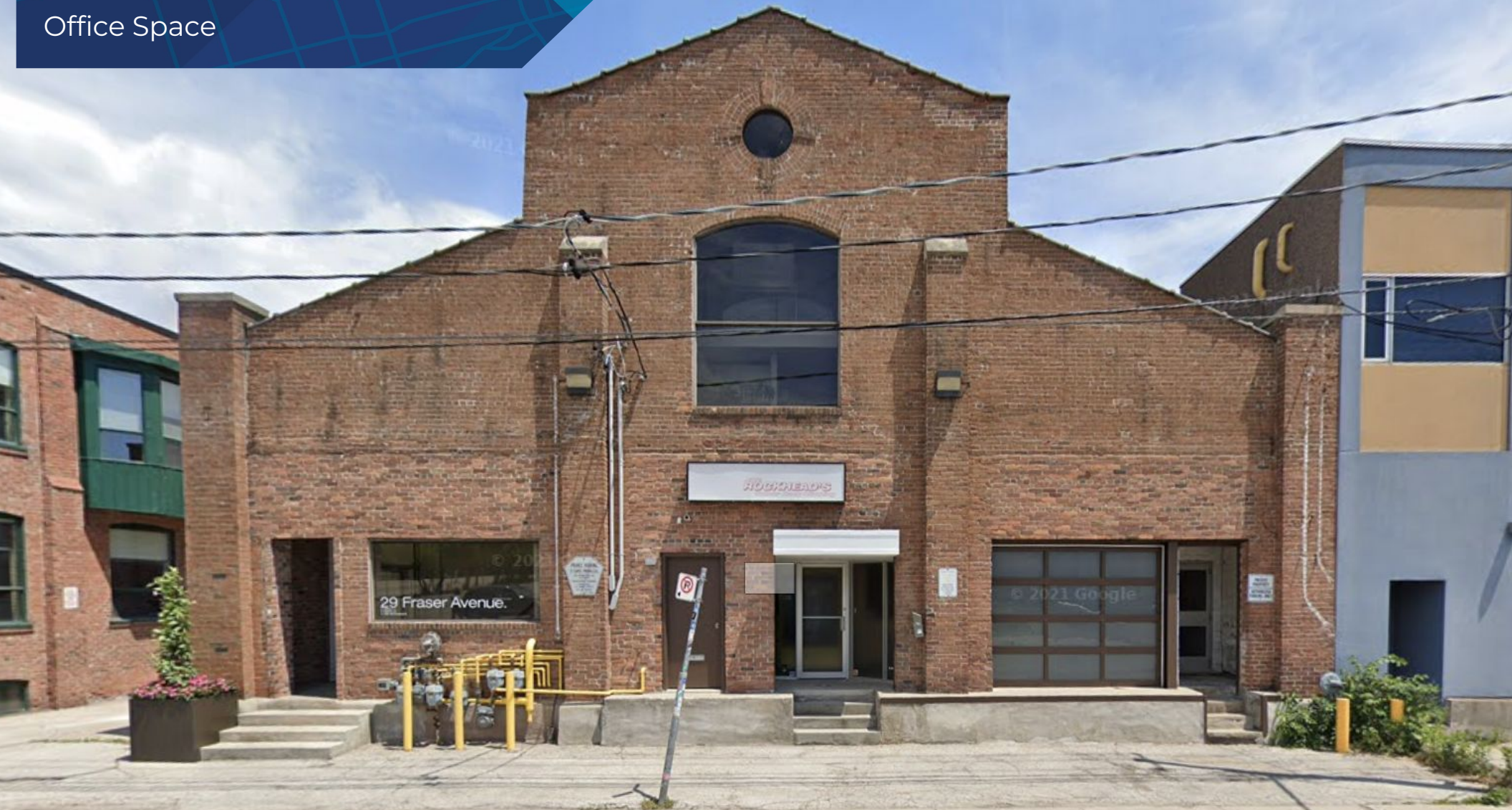


FOR LEASE

29 Fraser Avenue

Office Space



**METROPOLITAN
COMMERCIAL**

PROPERTY DETAILS

LOCATION	Located on Fraser Avenue, South of Liberty Street. <u>CLICK HERE</u>
BUILDING DETAILS	Unit 5 - 1,282 SF
RENTAL RATE	\$25.00 PSF/YR Net
T.M.I.	\$13.00 PSF/YR + Hydro & Gas (separately metered)
TERM	2-5 Years
POSSESSION	January 1st, 2024

PROPERTY SUMMARY

This exceptional office loft in Liberty Village offers a unique two-level layout. It's accessible via a walk-up to the second floor and features abundant natural light, an open-concept design, a private washroom, beautiful hardwood floors, and inviting skylights. Its location is highly convenient, with the Exhibition Go Station in close reach, and it also provides access to Beanfield Internet service. Tenant pays Hydro & Gas directly to service provider. Landlord will only entertain passive office use.



LIBERTY VILLAGE

Liberty Village functions as one of the city's creative corridors with production facilities, agencies and tech firms operating out of lofts and studio spaces in converted former warehouses.

This area is filled with young professionals, who enjoy the wide range of activities offered both during daytime and nightlife.

Notable landmarks include Lamport Stadium, Balzac's Coffee, Mildred's Temple Kitchen, Liberty Commons, and MZTV Museum of Television.

304

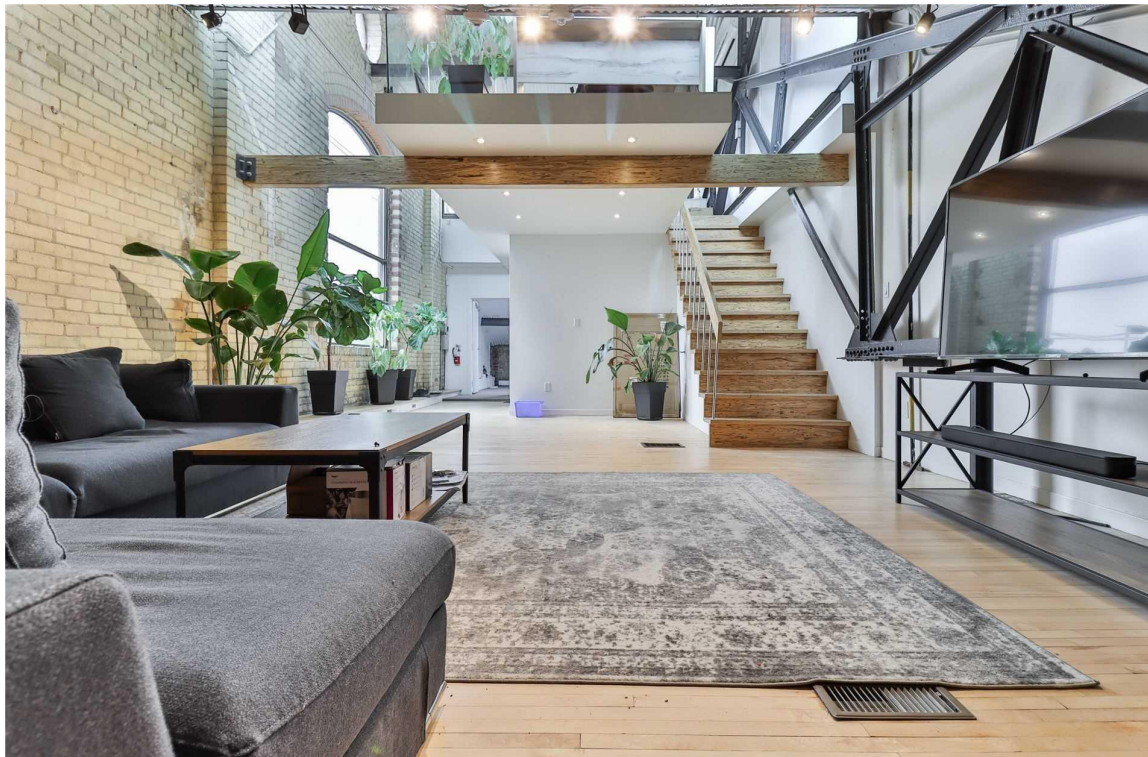
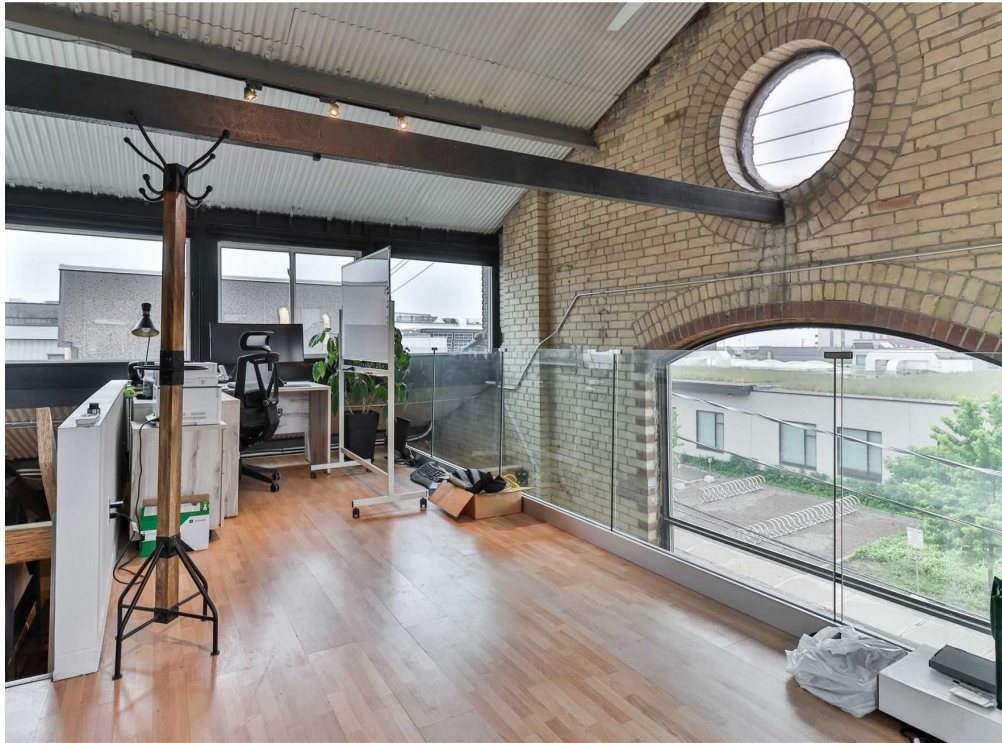
8-minute walk

504

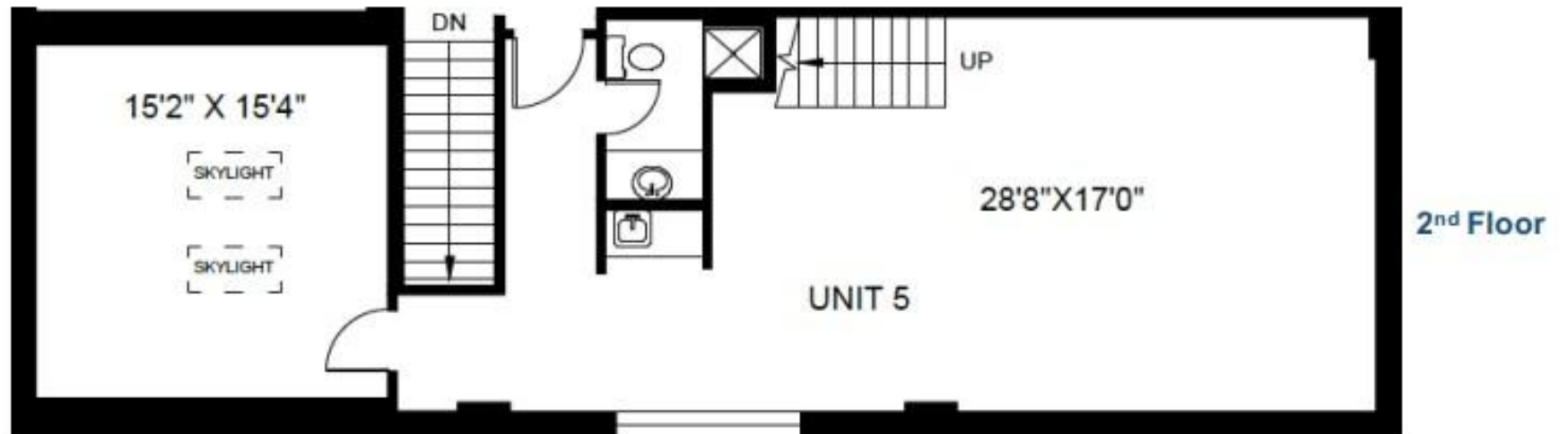
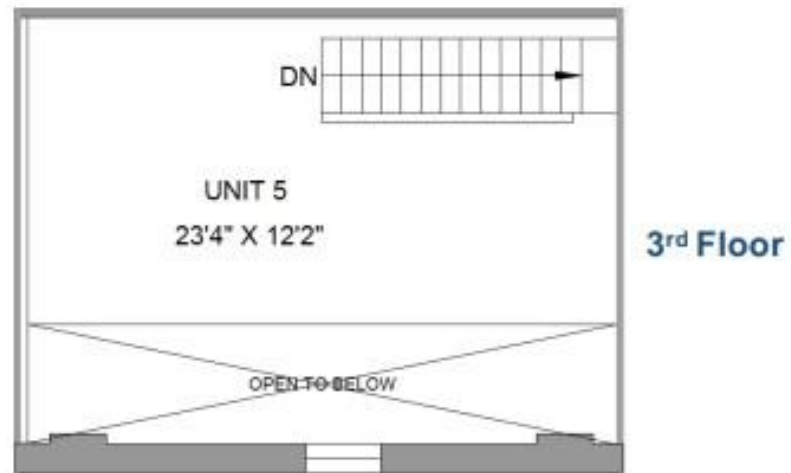
4-minute walk

Exhibition GO

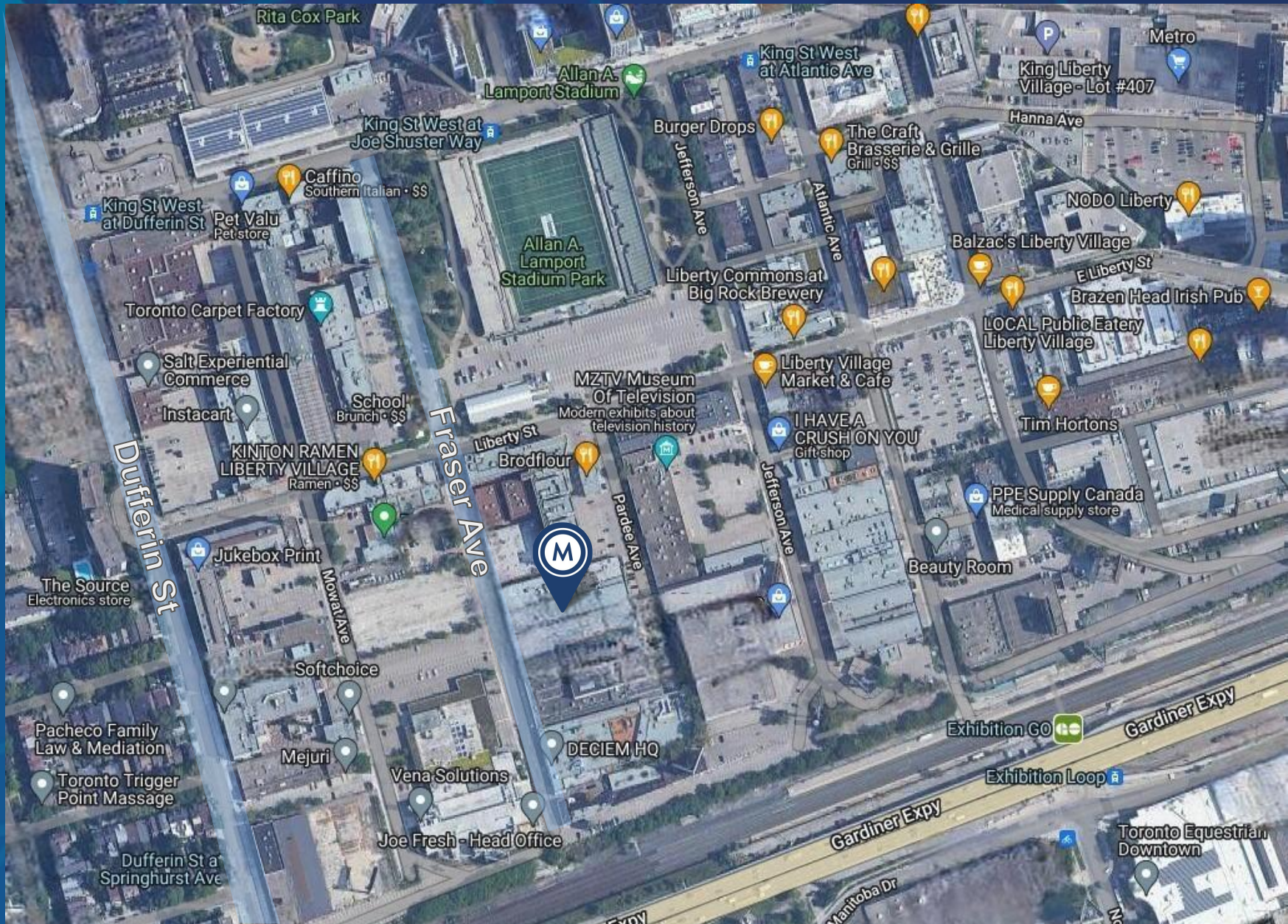
5-minute walk



FLOORPLAN



AREA MAP





METROPOLITAN
COMMERCIAL

Ming Zee

President, Broker of Record

416.703.6621 x 222

ming.zee@metcomrealty.com

Nick Nankissoor

Sales Representative

416.703.6621 x 241

nick@metcomrealty.com

150 BEVERLEY STREET, UNIT 1

TORONTO, ON | M5T 1Y5

416.703.6621

WWW.METCOMREALTY.COM