

FOR LEASE | LOWER LEVEL RETAIL SPACE
78 RICHMOND STREET EAST
TORONTO | ON



METROPOLITAN
COMMERCIAL





AERIAL

78 RICHMOND STREET EAST | FOR LEASE



DETAILS

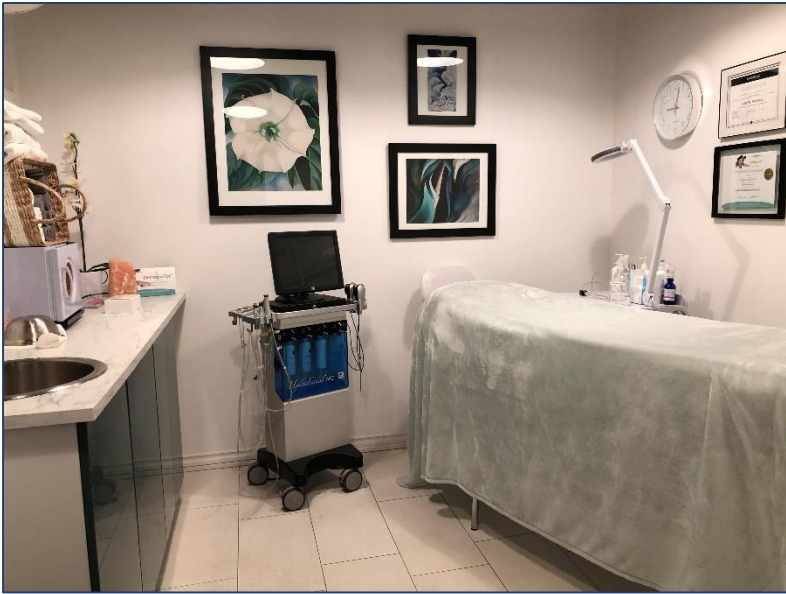
| | |
|------------------------|---|
| Unit Size | 2,600 SF (divisible into two units - 970 SF and 1,630 SF) |
| Base Rent | \$9,000/month – 2,600 SF unit \$3,955/month – 970 SF unit \$6,100/month – 1,630 SF unit |
| Additional Rent | Utilities |
| Term | 5 Years |
| Possession | May 01, 2019 |

FEATURES

With 35 feet of frontage on the north side of Richmond Street East, the subject property is situated one block east of Yonge St and within a short walk of the Queen and King subway stops. Recent condo developments have added many residences to the existing office buildings, thereby creating both a daytime and evening customer base. With a variety of permitted commercial uses, the property is ideal for medical practices, professional service firms, cafés and eating establishments.

Located on the lower level of a 15-unit brick & beam office building with over 100 daytime employees, the unit will further benefit from the possibility of installing street-front signage for increased visibility and brand awareness. The building's security features include controlled access and CCTV cameras.

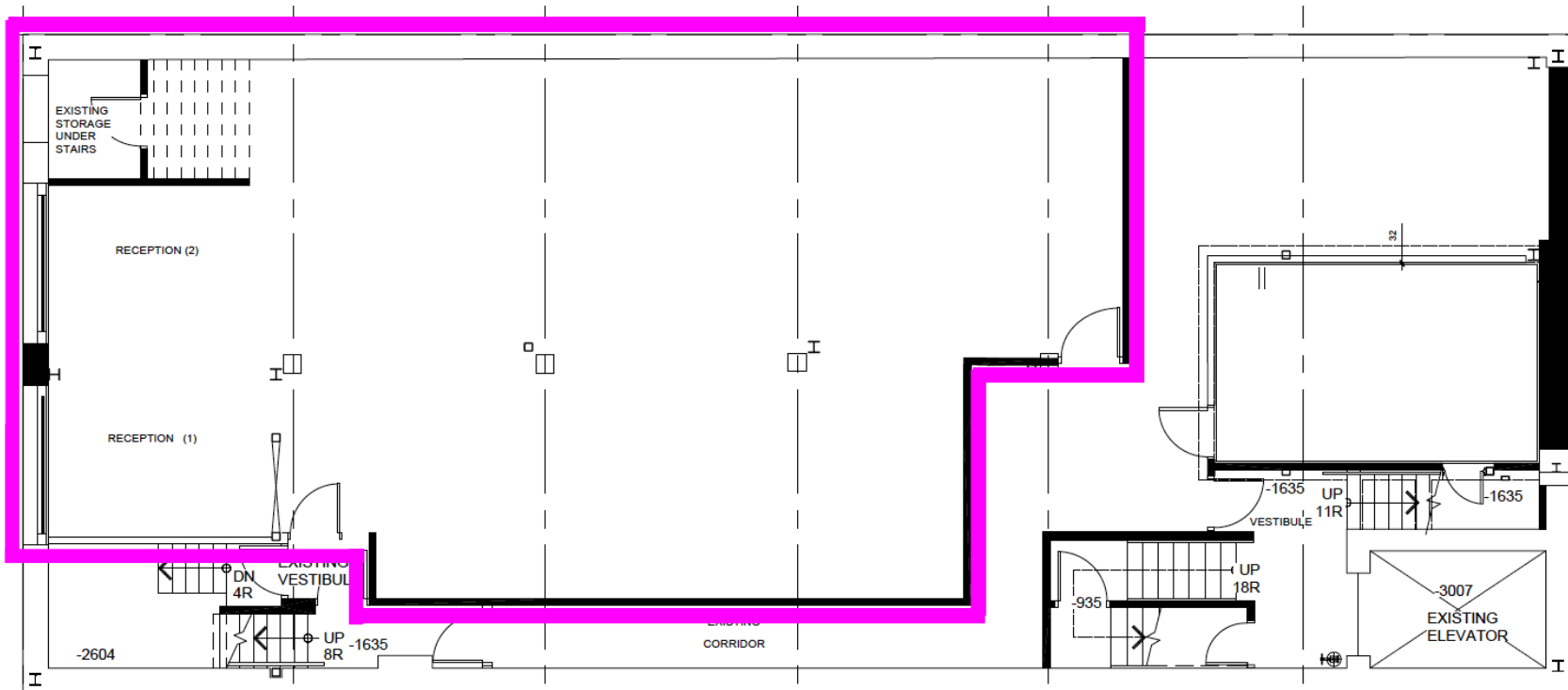
78 RICHMOND STREET EAST | FOR LEASE



PHOTOS



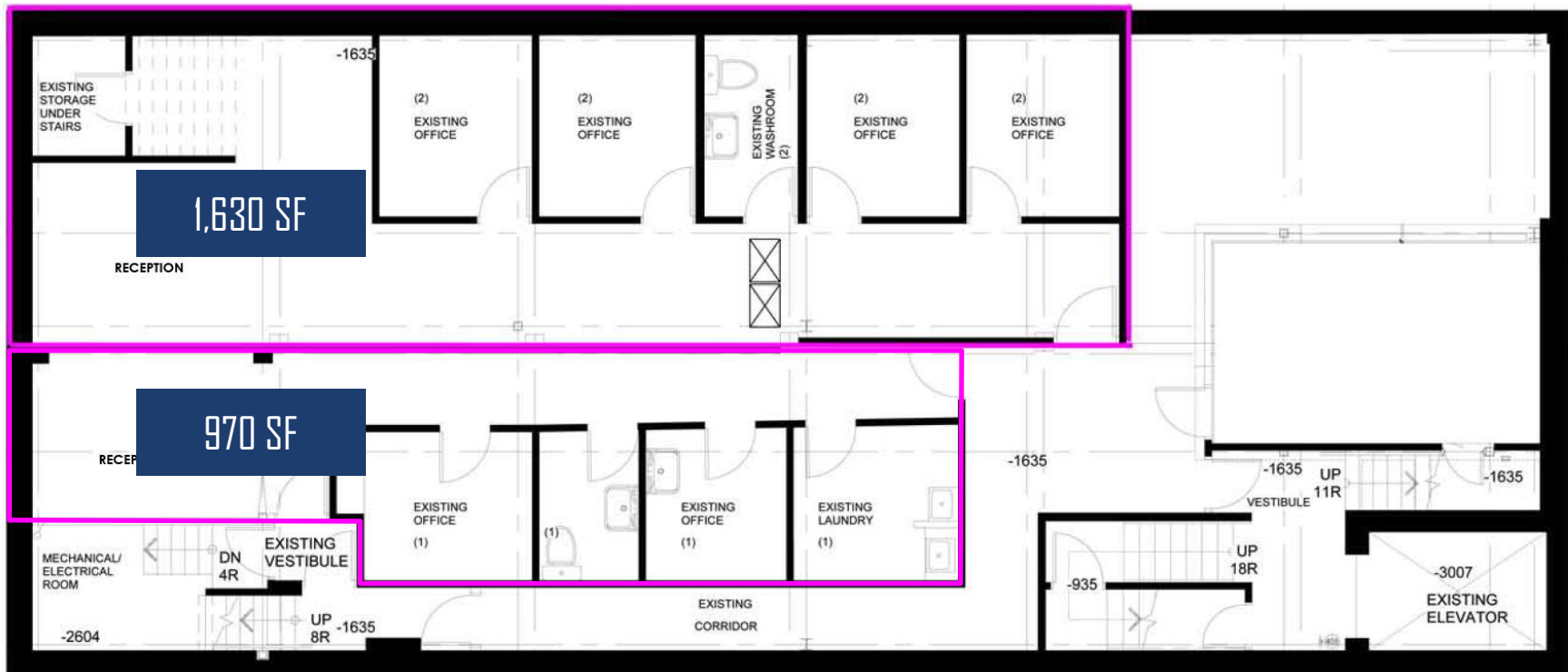
OPTION A 2,600 SF Contiguous



FLOOR PLAN



OPTION B 970 SF + 1,630 SF Divisible



FLOOR PLAN



METROPOLITAN COMMERCIAL

626 King St West, Suite 302
Toronto, ON
M5V 1M7

www.metcomrealty.com

CONTACT:

Amir Nourbakhsh* 416.703.6621 x 252 amir@metcomrealty.com

Jesse Roth* 416.703.6621 x 243 jesse.roth@metcomrealty.com