

FOR LEASE | OFFICE / COMMERCIAL / RETAIL

101 LISGAR STREET

TORONTO | ON



METROPOLITAN
COMMERCIAL





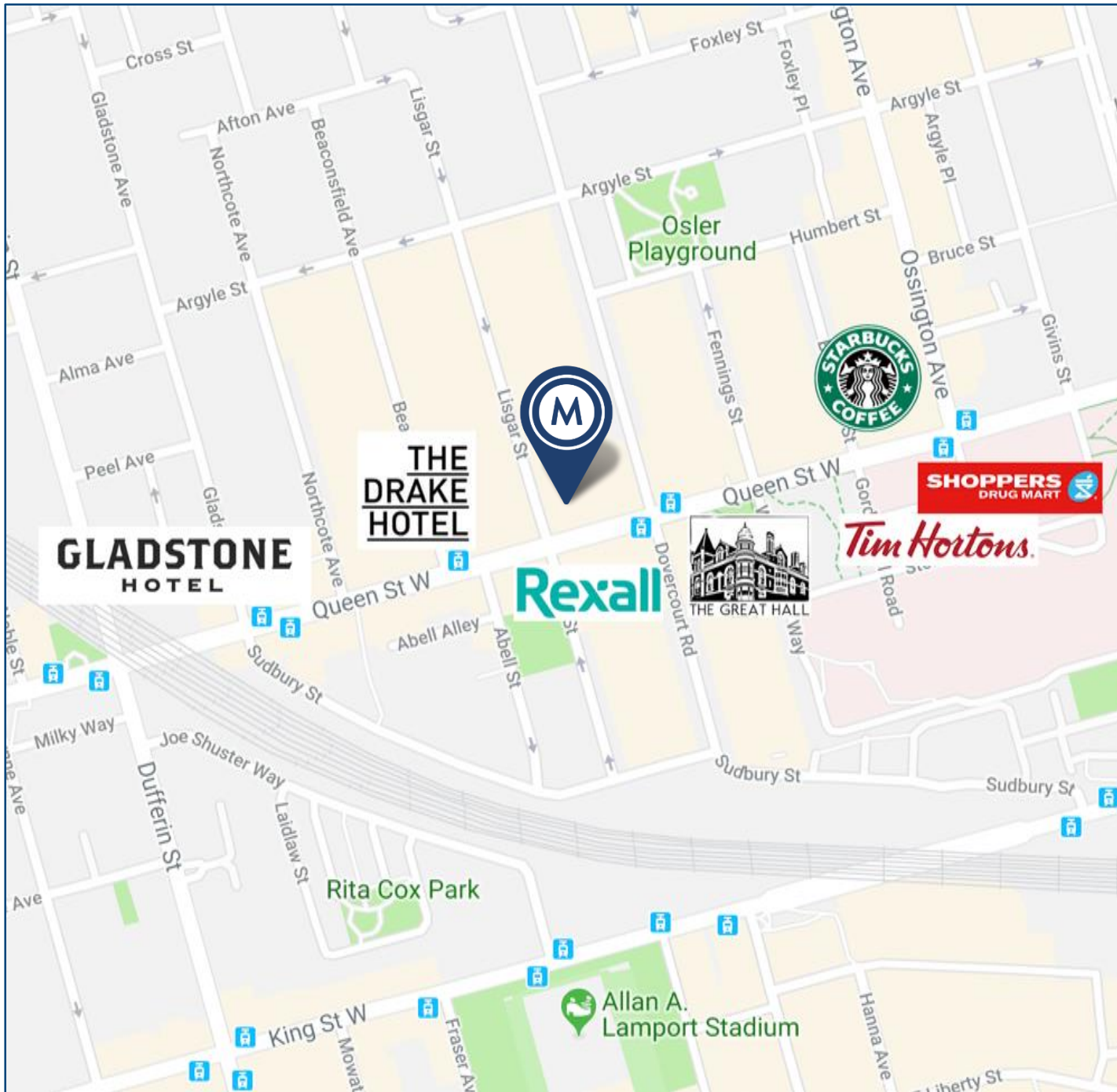
DETAILS

Location	North East corner of Queen St W and Lisgar St. Click Here for Map
Building Area (Not Divisible)	7,623 SF (Entire Building) Lower Level: 2,548 SF 1 st Floor: 2,676 SF 2 nd Floor: 2,399 SF
NET Rental Rate	\$28.00 PSF/YR
Additional Rent	\$10.00 PSF/YR + Utilities
Term	3-10 Years
Possession	October 2019

FEATURES

- Lots of potential uses including office, retail, fitness, restaurant or cultural space.
- Soaring 18'+ ceilings on 2nd floor.
- Solid concrete and steel construction.
- 3 parking spaces adjacent to building.
- Mens & Womens washrooms.
- Commercial kitchen allows for food servicing.
- Steps from The Drake, Gladstone and vibrant Queen West.

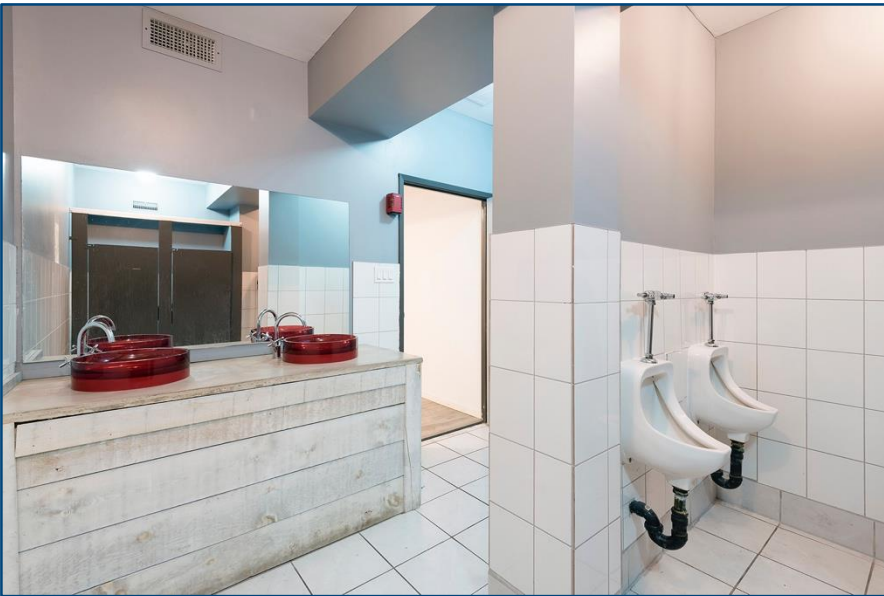




LOCATION OVERVIEW

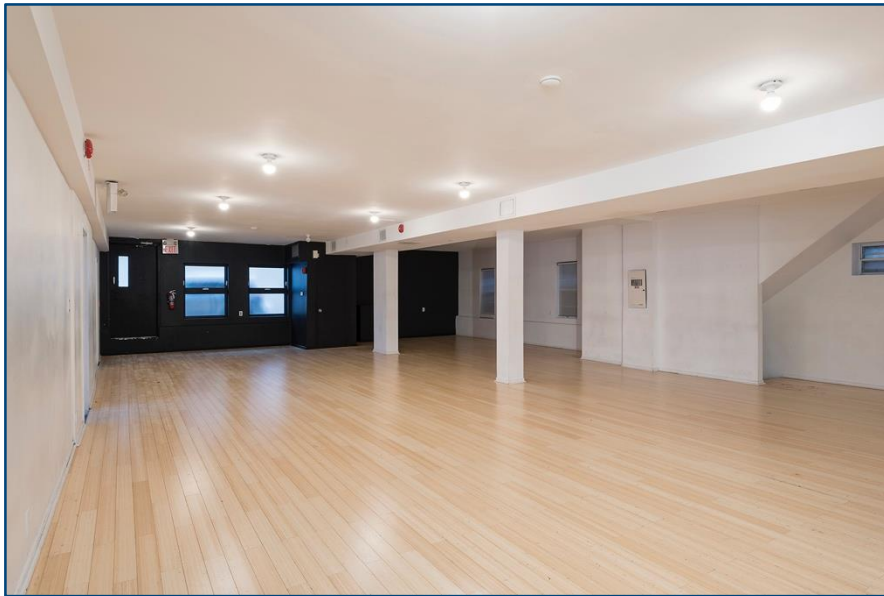
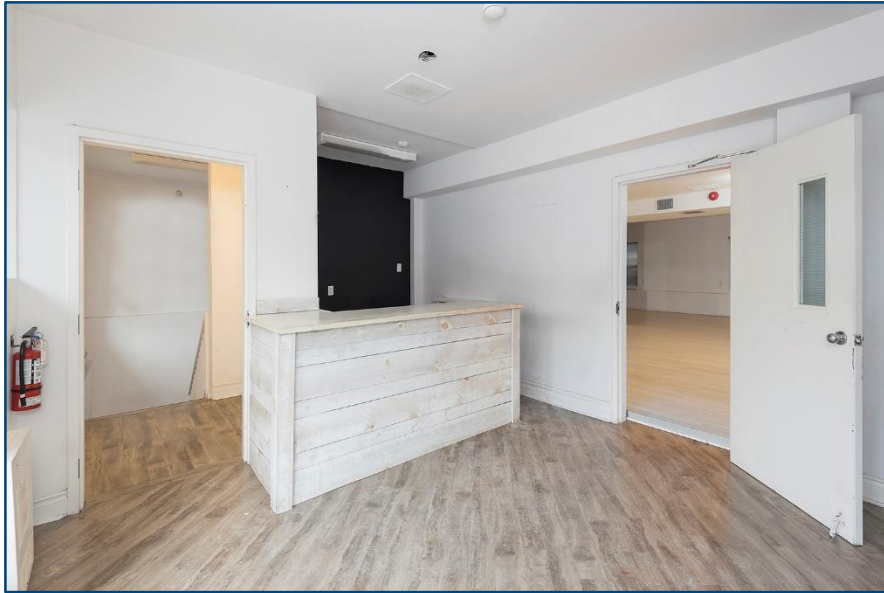
101 LISGAR STREET | FOR LEASE

LOWER LEVEL



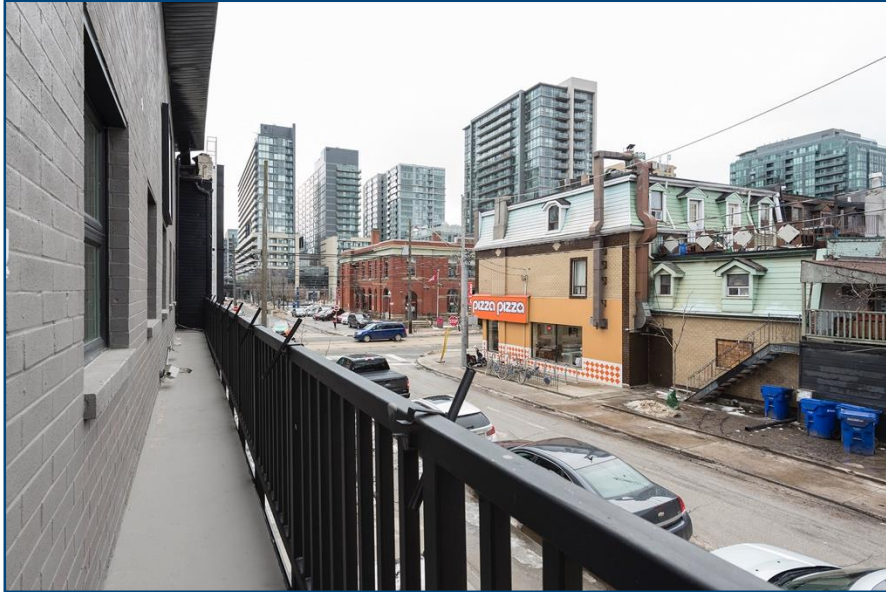
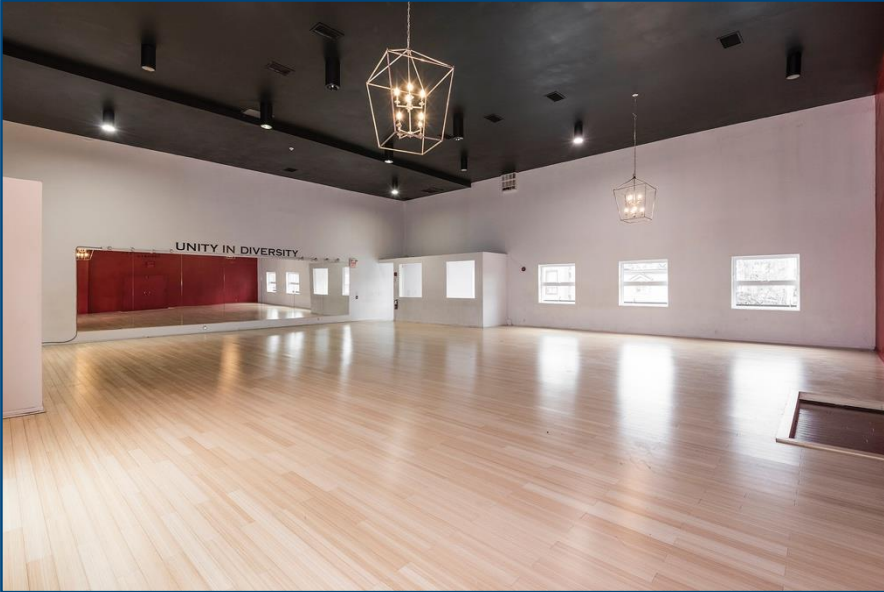
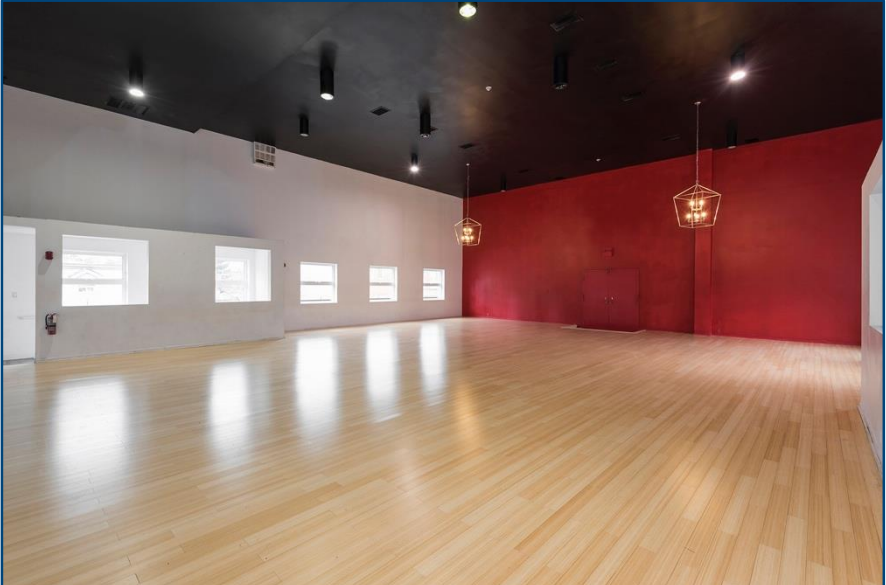
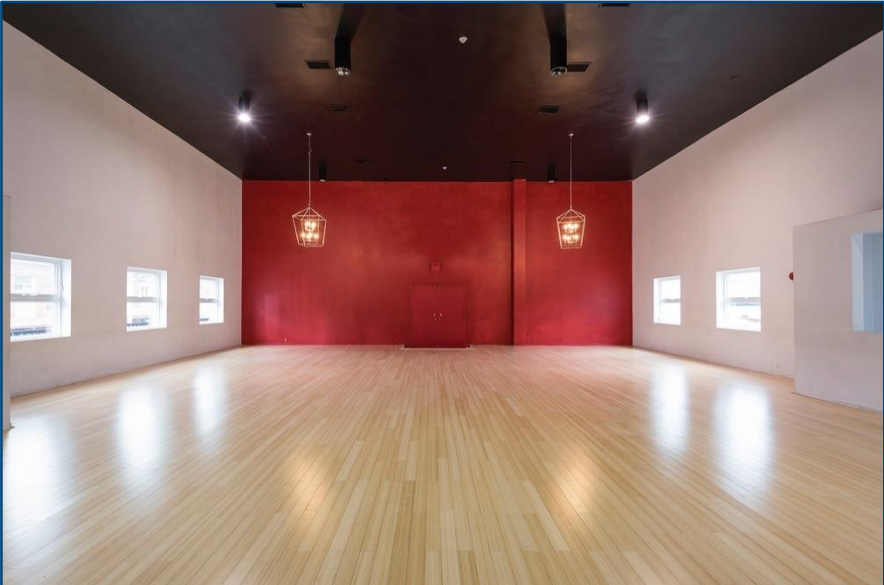
PICTURES

FIRST FLOOR



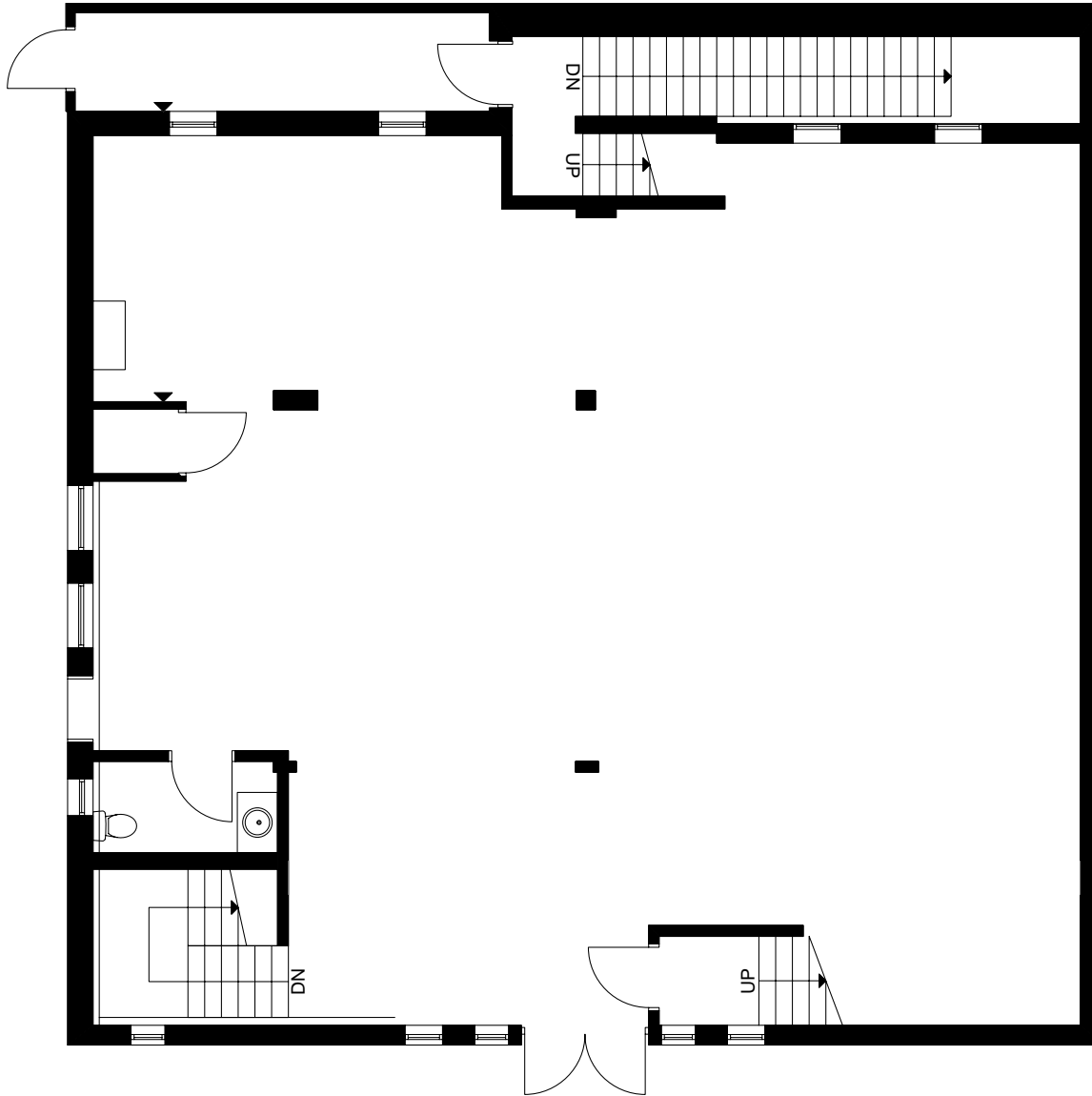
PICTURES

SECOND FLOOR



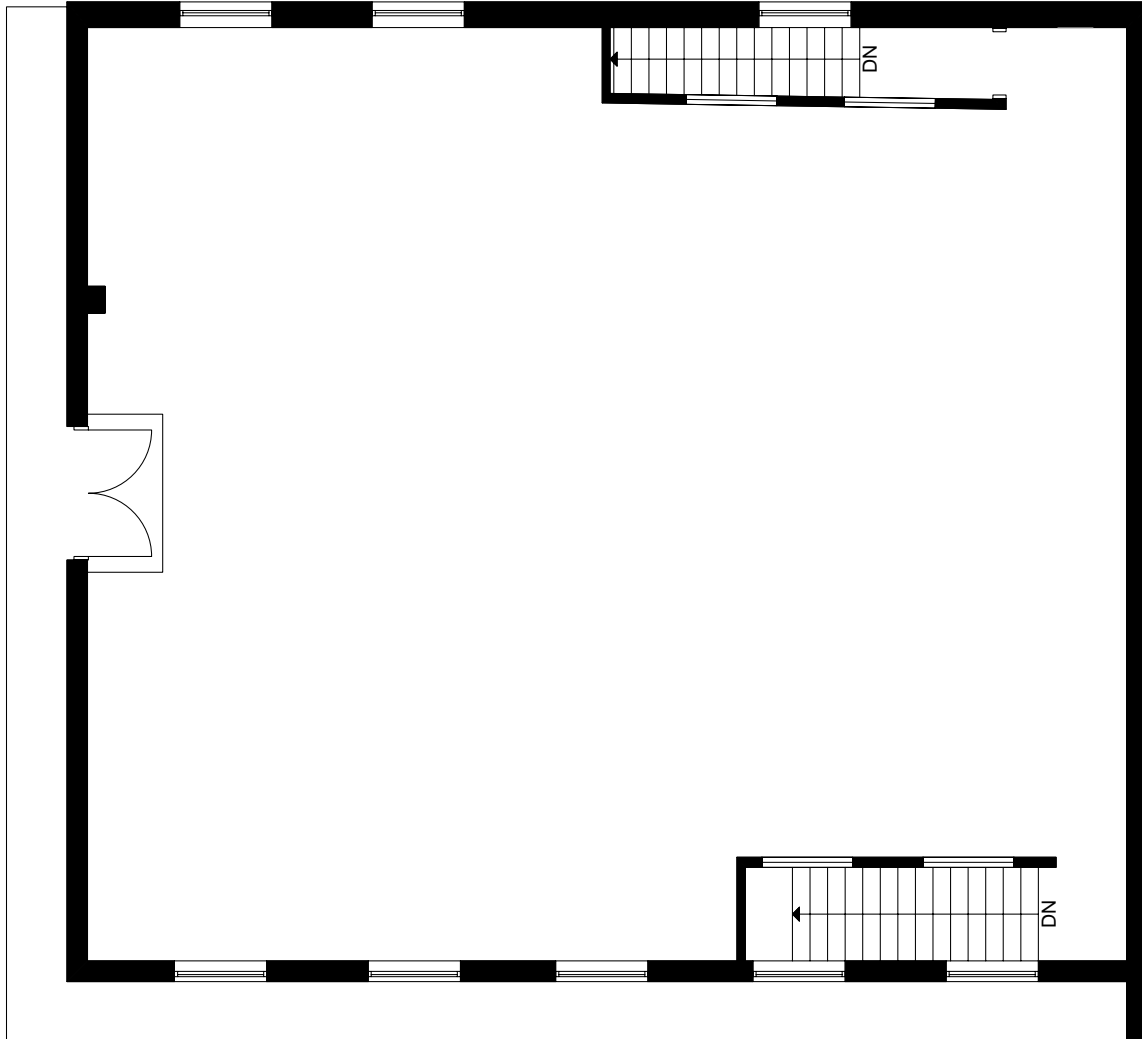
PICTURES

FIRST FLOOR – 2,676 SF
CLEARANCE – 8' - 8"



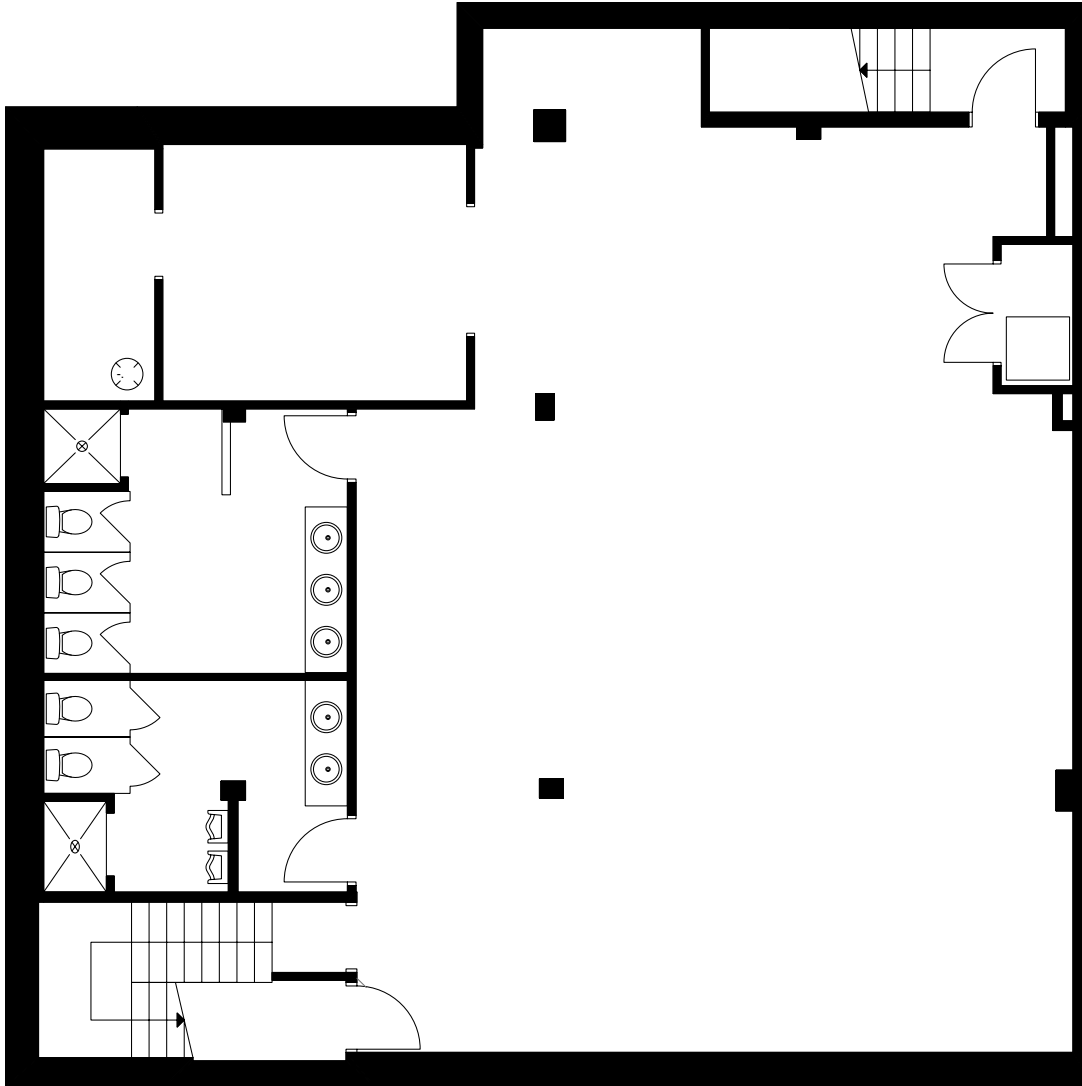
FIRST FLOOR PLAN

SECOND FLOOR – 2,399 SF
CLEARANCE – 18' - 5"



SECOND FLOOR PLAN

LOWER LEVEL – 2,548 SF
CLEARANCE – 8' - 8"



LOWER LEVEL PLAN

101 LISGAR STREET | FOR LEASE



METROPOLITAN COMMERCIAL

626 King St West, Suite 302
Toronto, ON
M5V 1M7

www.metcomrealty.com

CONTACT:

DAVID FRADKIN
Sales Representative
416.703.6621 ext. 250
david.fradkin@metcomrealty.com