

FOR LEASE | OFFICE SPACE

# 24 RYERSON AVENUE

TORONTO | ON



METROPOLITAN  
COMMERCIAL

REDUCED RATE





## DETAILS

<b>Location</b>	East of Bathurst, One Block North of Queen Street West. <a href="#">Click Here for Map</a>
<b>Building Details</b>	Entire Lower Level – 3,000 SF
<b>Rental Rate</b>	\$30.00 /PSF/YR Semi-Gross
<b>Possession</b>	Immediately
<b>Term</b>	36-60 Months

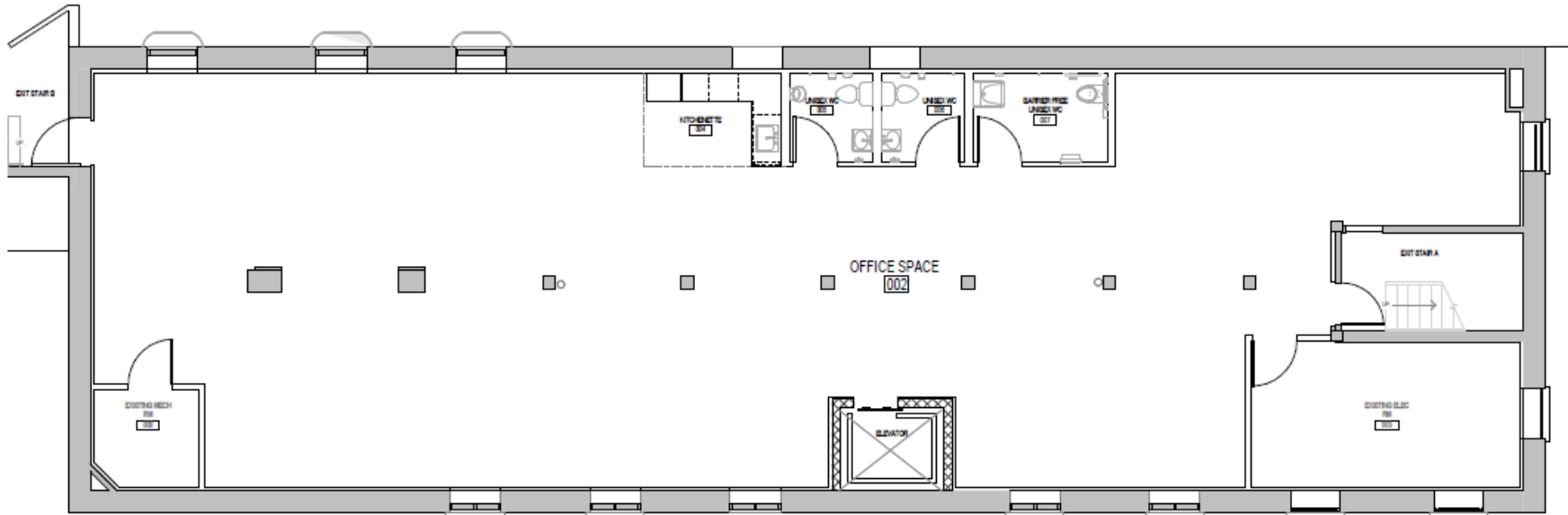
## FEATURES

- Completely renovated building.
- Lower level with above-grade windows.
- Ideal for creative companies or software developers, film production, e-commerce businesses, etc.
- Easy access to the Queen Streetcar, Bathurst Streetcar





FLOOR PLAN





INTERIOR PHOTOS





# METROPOLITAN COMMERCIAL

626 King St West, Suite 302  
Toronto, ON  
M5V 1M7

[www.metcomrealty.com](http://www.metcomrealty.com)

## CONTACT:

**TIM NOVAK\***  
**Senior Vice President**  
**416.703.6621 ext. 246**  
**[Tim.novak@metcomrealty.com](mailto:Tim.novak@metcomrealty.com)**