

FOR LEASE | OFFICE SPACE

24 RYERSON AVENUE

TORONTO | ON



METROPOLITAN
COMMERCIAL

IMPROVED RATE



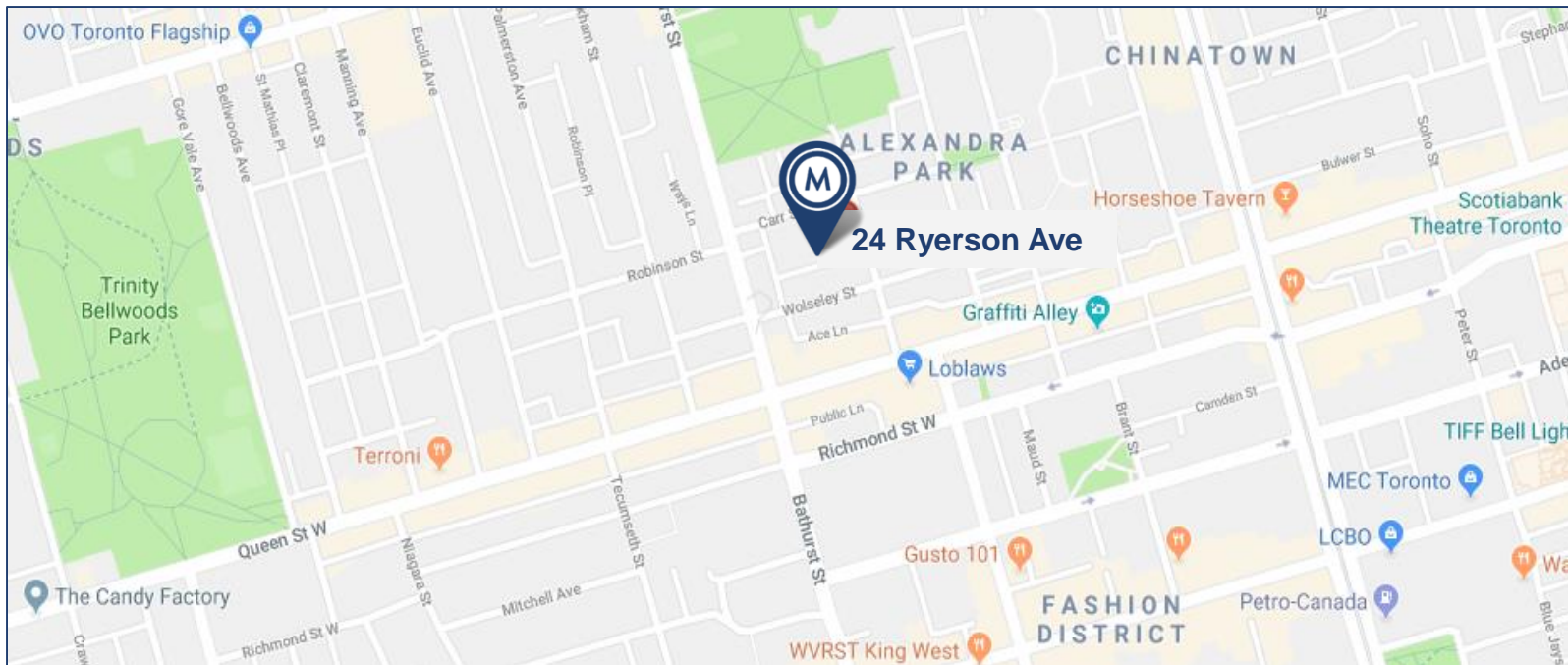


DETAILS

Location	East of Bathurst, One Block North of Queen Street West. Click Here for Map
Building Details	Entire Lower Level – 3,000 SF
Rental Rate	\$40.00 /PSF/YR Semi-Gross
Possession	Immediately
Term	36-60 Months

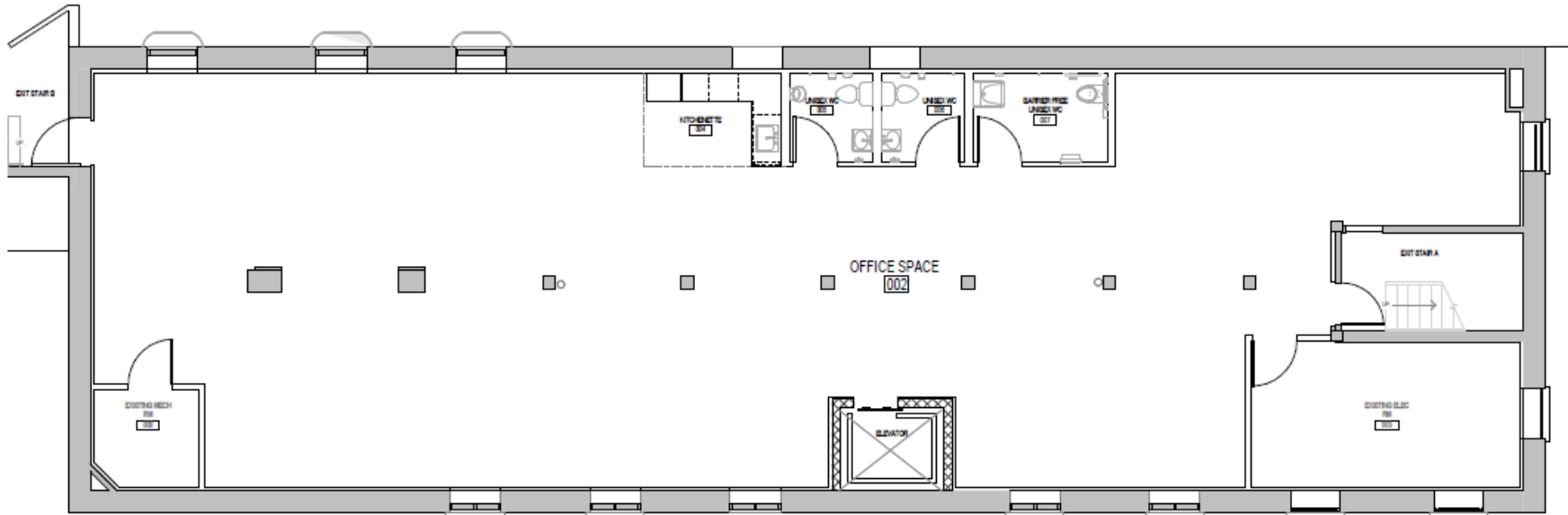
FEATURES

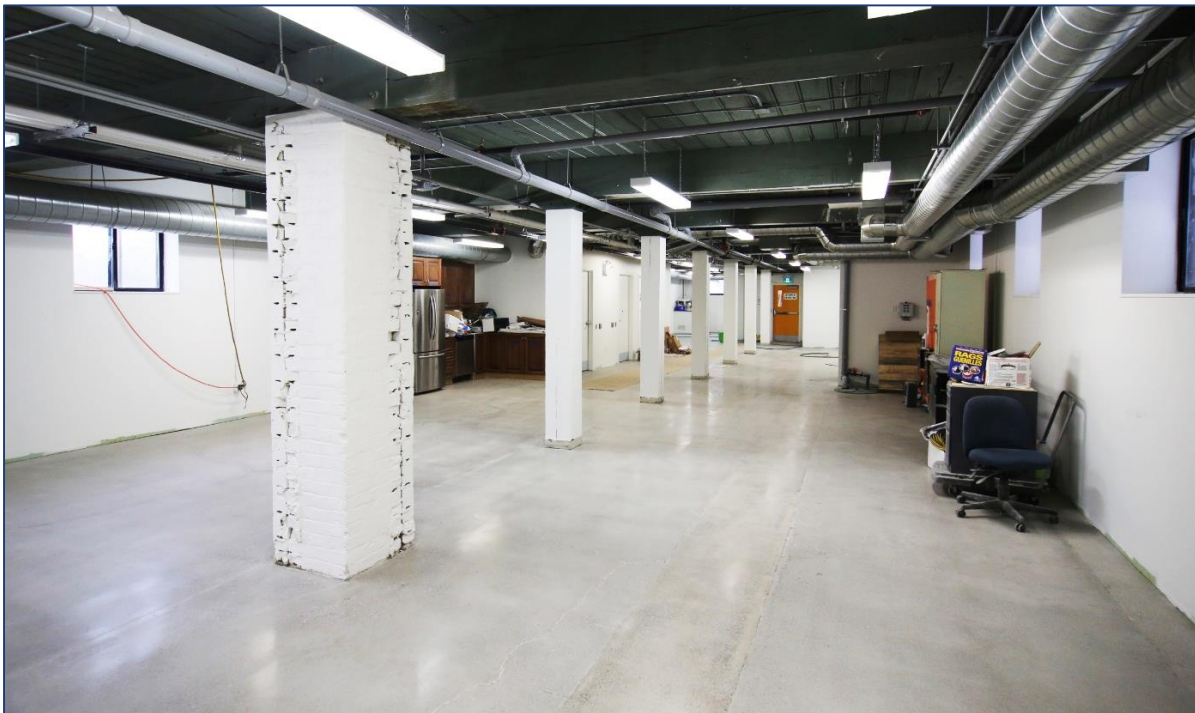
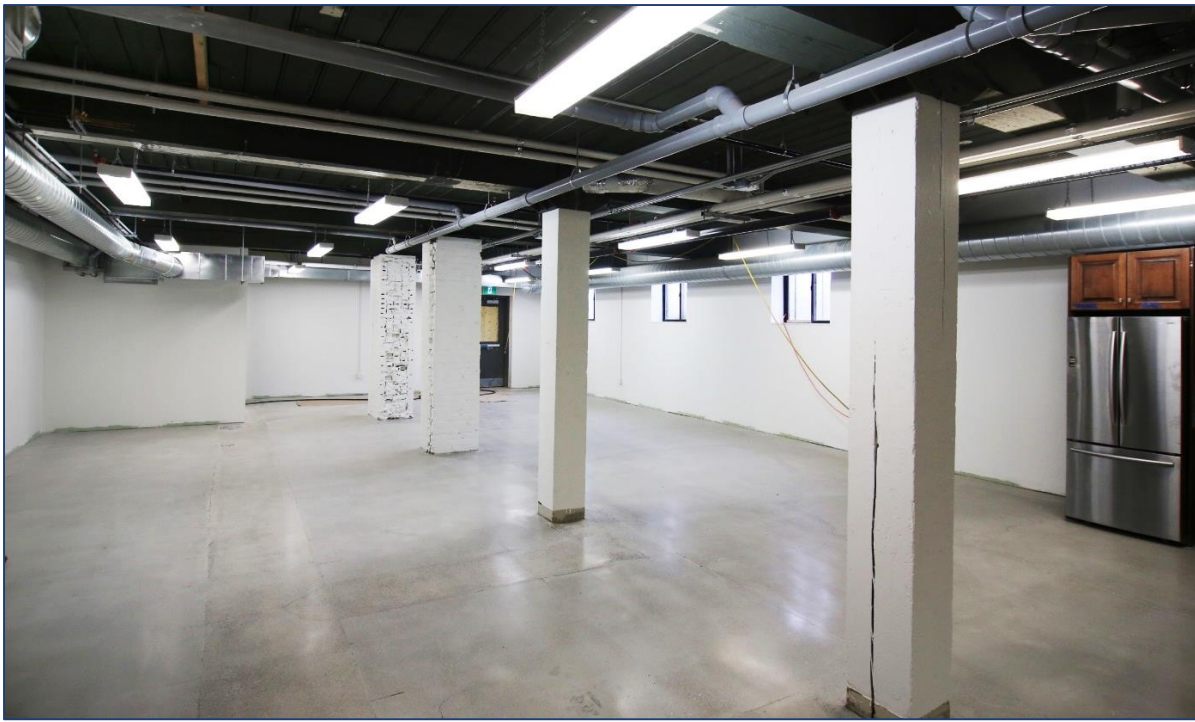
- Brick and beam building with south facing windows
- Easy access to the Queen Streetcar, Bathurst Streetcar
- No on-site parking





FLOOR PLAN





INTERIOR PHOTOS



METROPOLITAN COMMERCIAL

626 King St West, Suite 302
Toronto, ON
M5V 1M7

www.metcomrealty.com

CONTACT:

TIM NOVAK*
Senior Vice President
416.703.6621 ext. 246
Tim.novak@metcomrealty.com