

AVAILABLE | INDUSTRIAL/OFFICE

1783 MATTAWA AVENUE

MISSISSAUGA, ON



METROPOLITAN
COMMERCIAL





DETAILS

Location	Near Dixie/Dundas. Click Here for Map
Building Area	20,000 SF (Approx.)
Site Area	46,769 SF
Lot Dimensions	Frontage 180.00 ft x 0.00 ft (Irregular.)
Property Taxes	\$37,000.00 (2018)
Zoning	E2-133

FEATURES

- Single storey, brick building
- No basement
- 14-18 FT Ceiling
- 3 Drive-in doors.
- Current NOI Approx. \$112,000
- 9,500 SF can be made vacant

ASKING PRICE

Refer to Listing Agents.

REGISTERED

PLAN

669

LOT 9

INST. No. 701052

1 STOREY
BRICK & BLOCK
BUILDING
No. 1773

LOT 10

INST. No. 740343

1 STOREY
BRICK & BLOCK
BUILDING
No. 1783

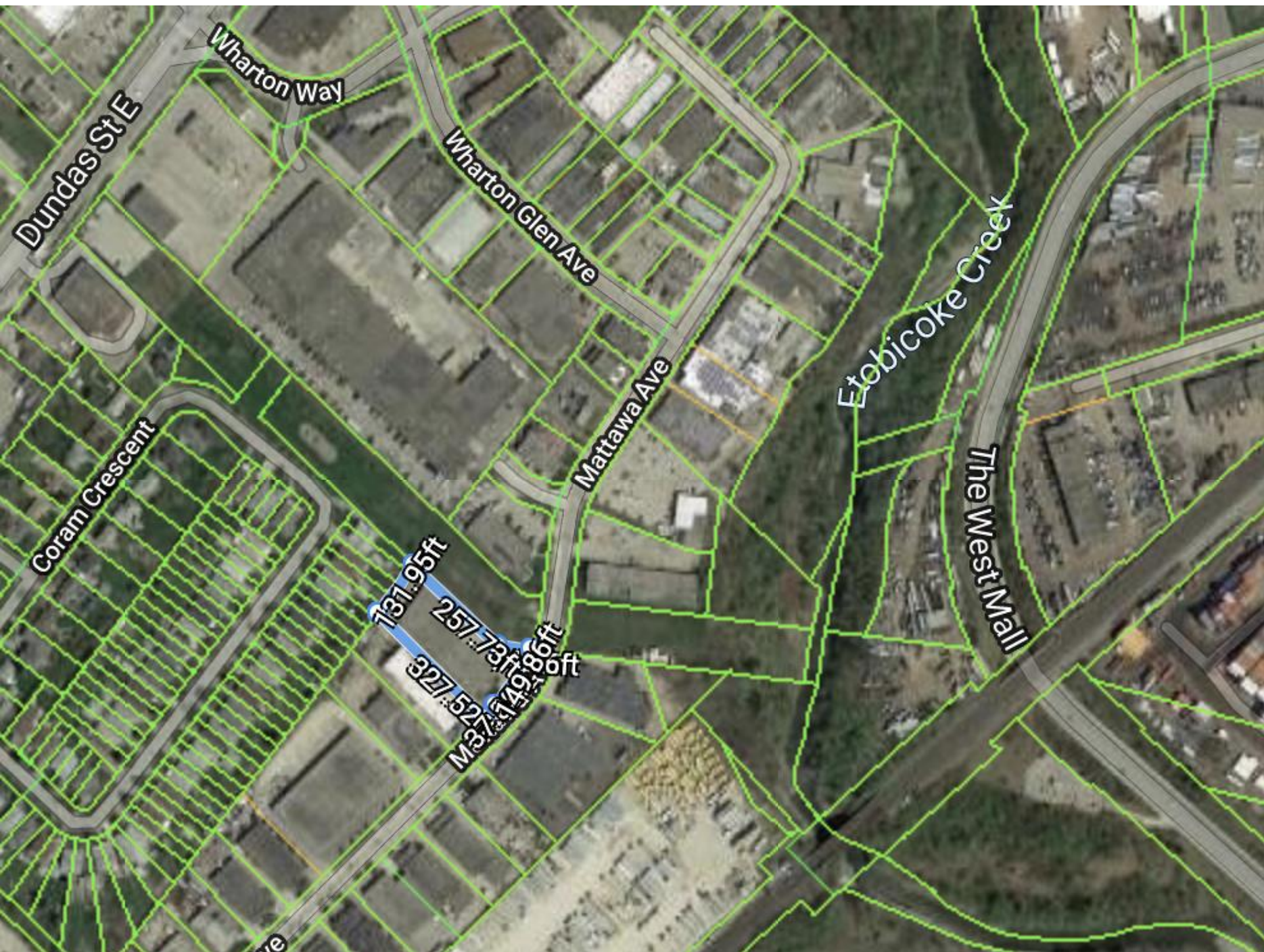
20' WIDE EASEMENT AS SET OUT
IN INST. No. 158207 & 740343

OVERHEAD HYDRO WIRES

1783 MATTAWA AVENUE | FOR SALE

SURVEY





LOCATION MAP

1783 MATTAWA AVENUE | FOR SALE



LOCATION MAP



1783 MATTAWA AVENUE | FOR SALE



METROPOLITAN COMMERCIAL

626 King St West, Suite 302
Toronto, ON
M5V 1M7

www.metcomrealty.com

CONTACT:

TIM NOVAK*
Senior Vice President
416.703.6621 ext. 246
tim.novak@metcomrealty.com

ELISE NGO-WONG*
416.703.6621 ext. 277
elise@metcomrealty.com