

FOR LEASE | OFFICE

# 920 THE EAST MALL

ETOBICOKE, ON



METROPOLITAN  
COMMERCIAL





## DETAILS

---

<b>Location</b>	At Highway 427 and Eglinton Ave. W. <a href="#">Click Here for Map</a>
<b>Building Details</b>	Lower Level: 2,000 SF Main Floor: 2,000 SF Can be combined for: 4,000 SF
<b>Rental Rate</b>	\$20.00 PSF/YR
<b>Additional Rent</b>	Includes Gas and Hydro
<b>Term</b>	1-3 Years
<b>Possession</b>	Immediate

## PROPERTY FEATURES

---

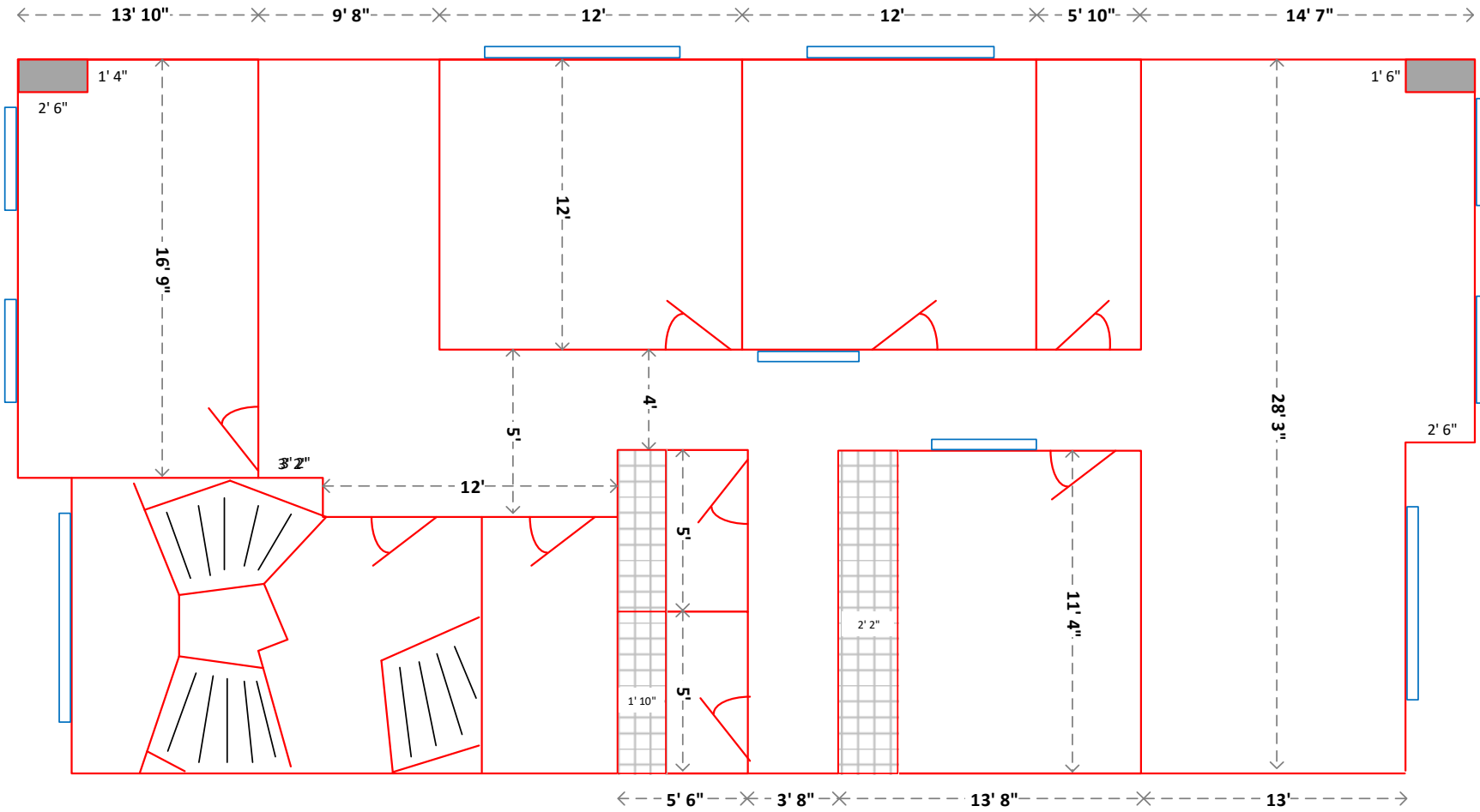
- 4 private offices on the main level, 1 private office on the lower level with open-concept floorplan that can accommodate multiple work stations
- Separate boardroom and kitchenette for each level
- Private in-suite men's and women's washrooms for each level
- Ready to move in 'turn-key' property
- 3 TTC bus stops steps away including a direct bus to Kipling Station
- Close proximity to highways 427, 27 & 401
- Large parking lot with an abundance of spaces for employees and company guests.



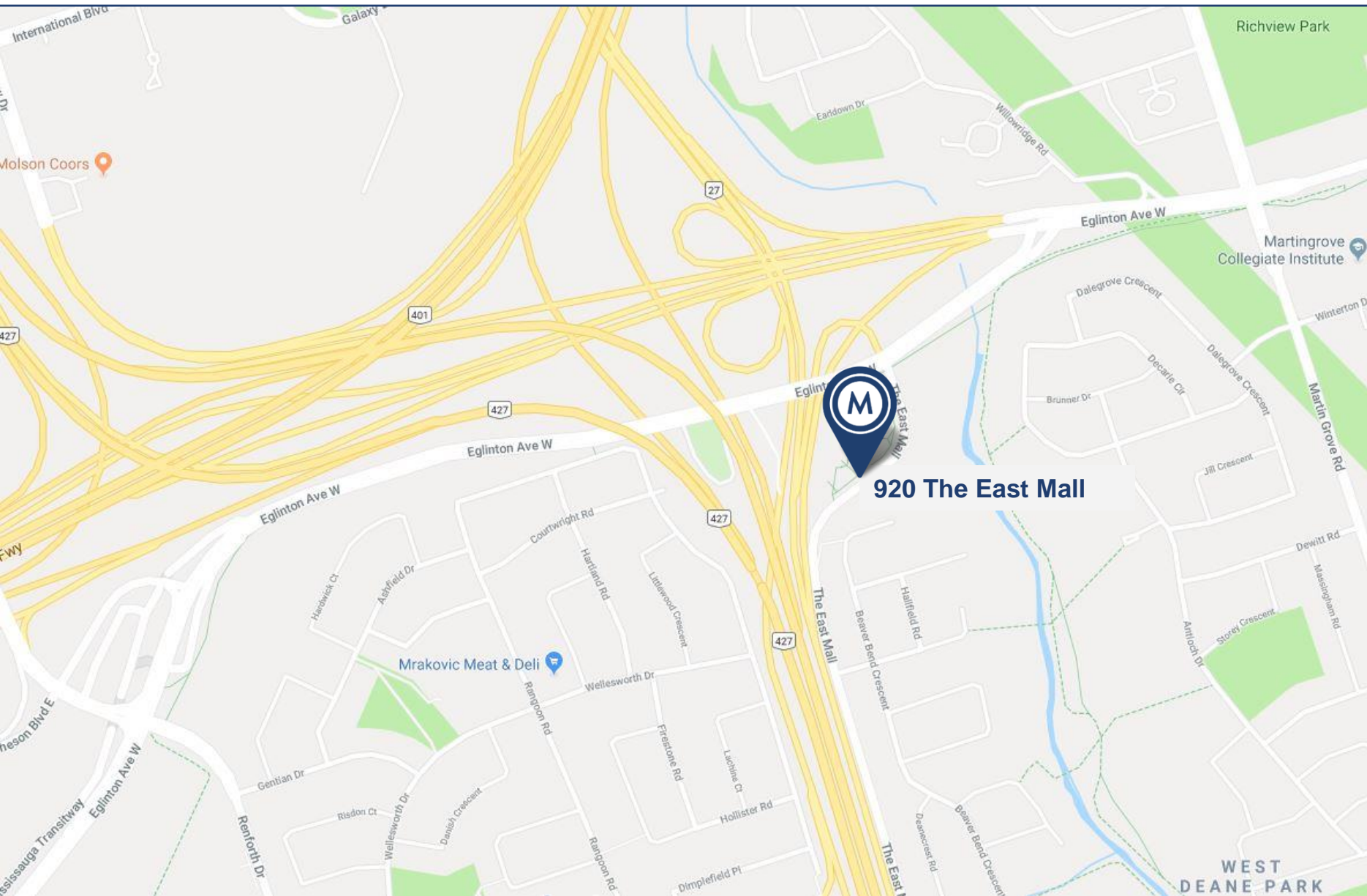
PROPERTY PHOTOS



# FLOOR PLAN



FLOOR PLAN



LOCATION MAP



# METROPOLITAN COMMERCIAL

626 King St West, Suite 302  
Toronto, ON  
M5V 1M7

[www.metcomrealty.com](http://www.metcomrealty.com)

## CONTACT:

**TIM NOVAK\***  
Senior Vice President  
416.703.6621 ext. 246  
[tim.novak@metcomrealty.com](mailto:tim.novak@metcomrealty.com)

**ELISE NGO-WONG\***  
Sales Representative  
416.703.6621 ext. 277  
[elise@metcomrealty.com](mailto:elise@metcomrealty.com)