

FOR LEASE | OFFICE

42 SOUSA MENDES STREET

TORONTO, ON



METROPOLITAN
COMMERCIAL





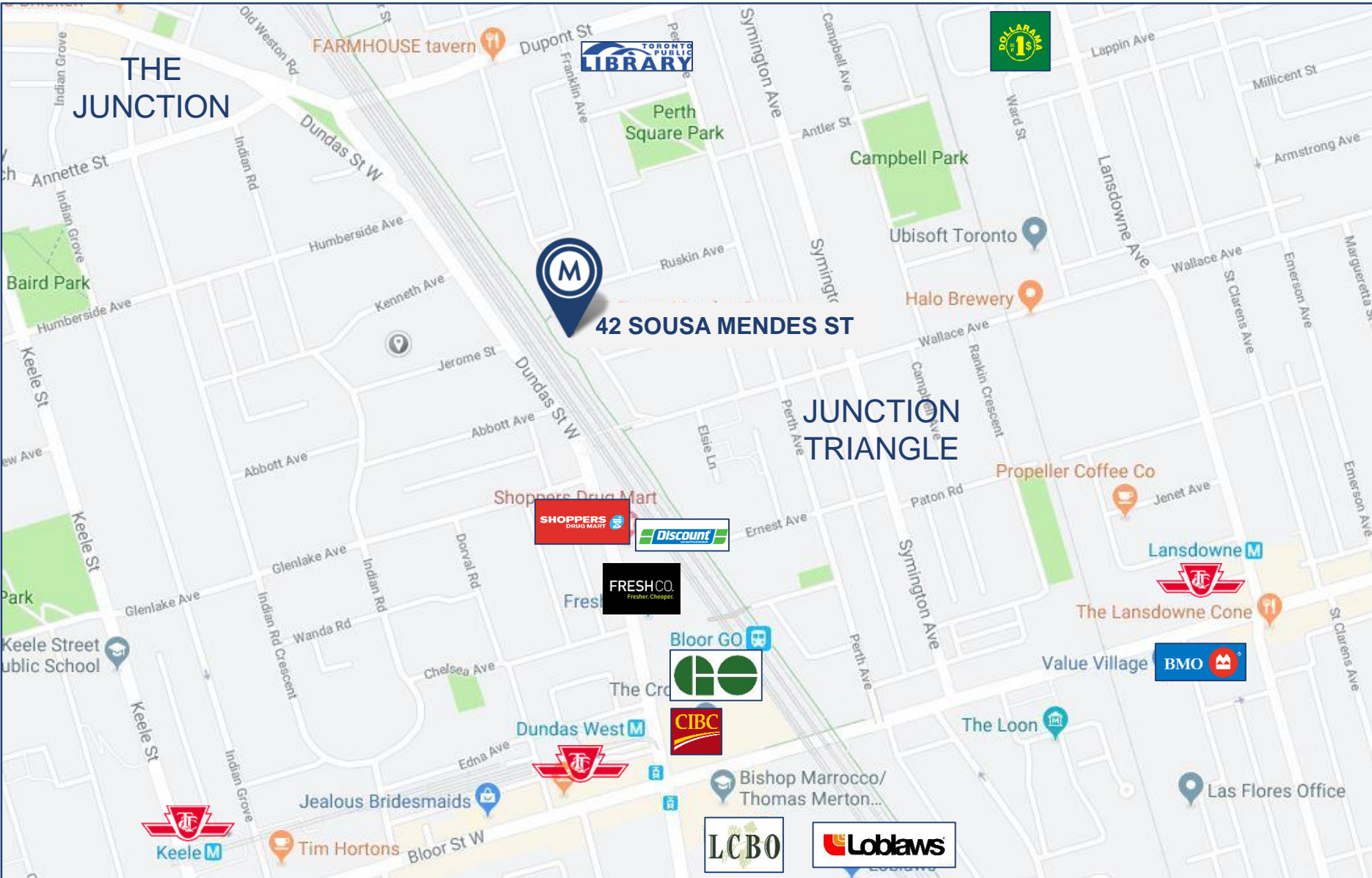
DETAILS

Location	Sousa Mendes Street, South of Ruskin Avenue Click Here for Map
Building Details	1,000 SF
Rental Rate	Please Contact Listing Agent*
Term	Flexible

PROPERTY FEATURES

- Brand new commercial office/ condominium development property.
- Option for open concept or two private offices.
- Bright suite – only unit in complex with 3 large windows facing bike path.
- Landlord will build out office*
- Private restroom.
- One parking spot included.
- Street parking available.
- Walking distance to Dundas West Station, UP Express & Lansdowne Station.

*Please contact listing agent for more details

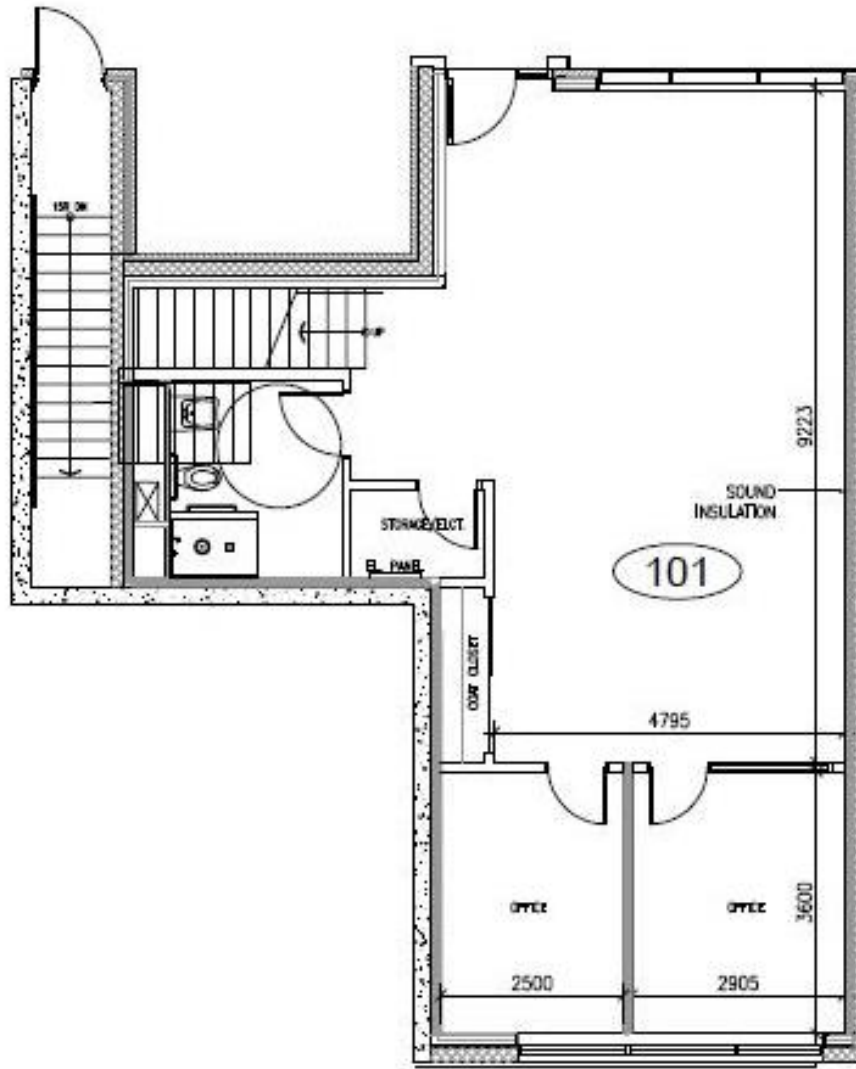


LOCATION MAP

42 SOUSA MENDES STREET | FOR LEASE



FLOOR PLAN



GROUND



METROPOLITAN COMMERCIAL

626 King St West, Suite 302
Toronto, ON
M5V 1M7

www.metcomrealty.com

CONTACT:

ELISE NGO-WONG*
Sales Representative
416.703.6621 ext. 277
elise@metcomrealty.com