

FOR LEASE | OFFICE

# 42 SOUSA MENDES STREET

TORONTO, ON



METROPOLITAN  
COMMERCIAL

REDUCED PRICE





## DETAILS

---

<b>Location</b>	Sousa Mendes Street, South of Ruskin Avenue <a href="#">Click Here for Map</a>
<b>Building Details</b>	1,000 SF
<b>Gross Rental Rate</b>	\$42.00 PSF/YR
<b>Term</b>	Flexible

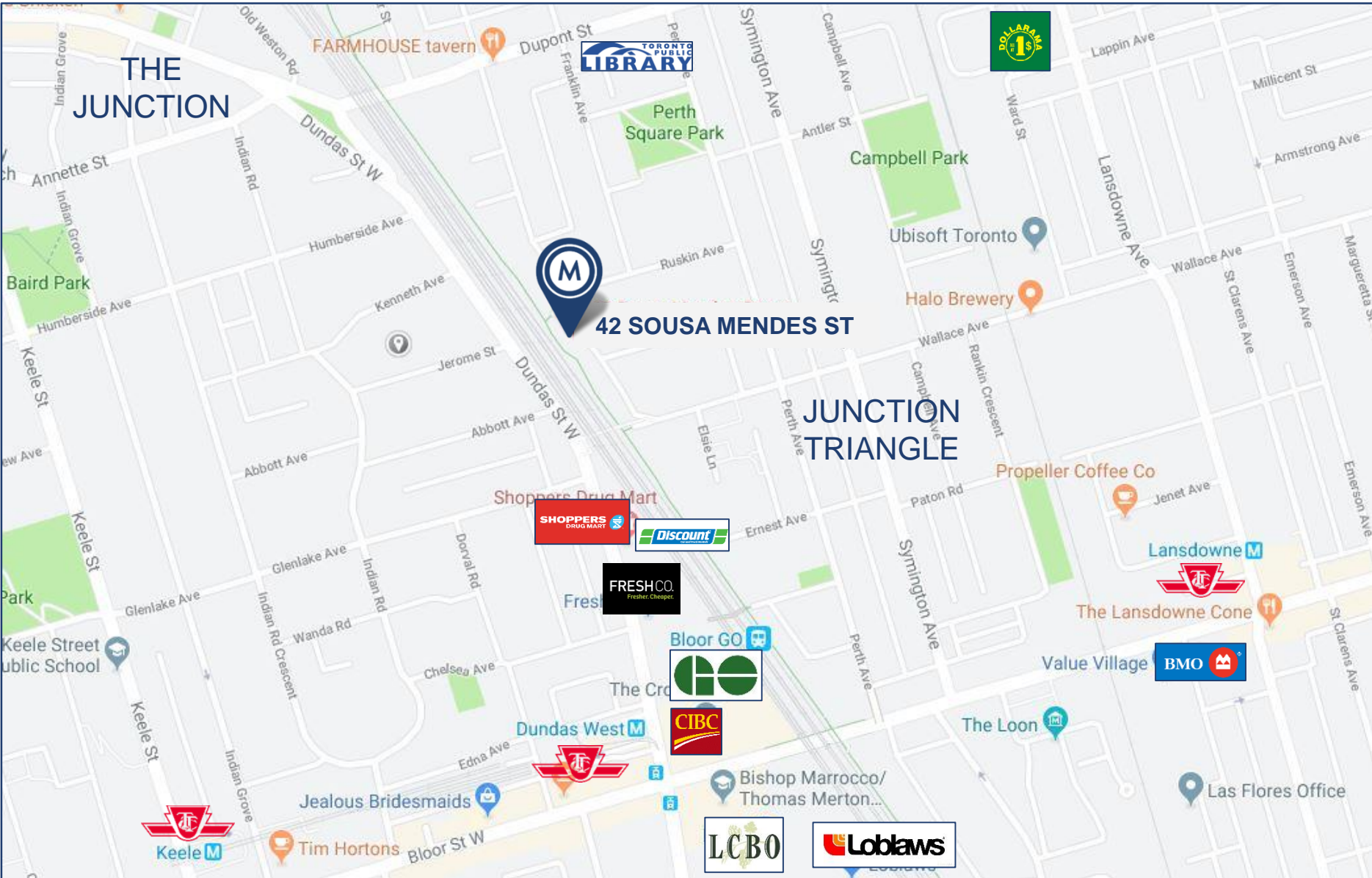
## PROPERTY FEATURES

---

- Brand new commercial office/ condominium development property.
- Option for open concept or two private offices.
- Bright suite – only unit in complex with 3 large windows facing bike path.
- Landlord will build out office\*
- Street parking available.
- Walking distance to Dundas West Station, UP Express & Lansdowne Station.

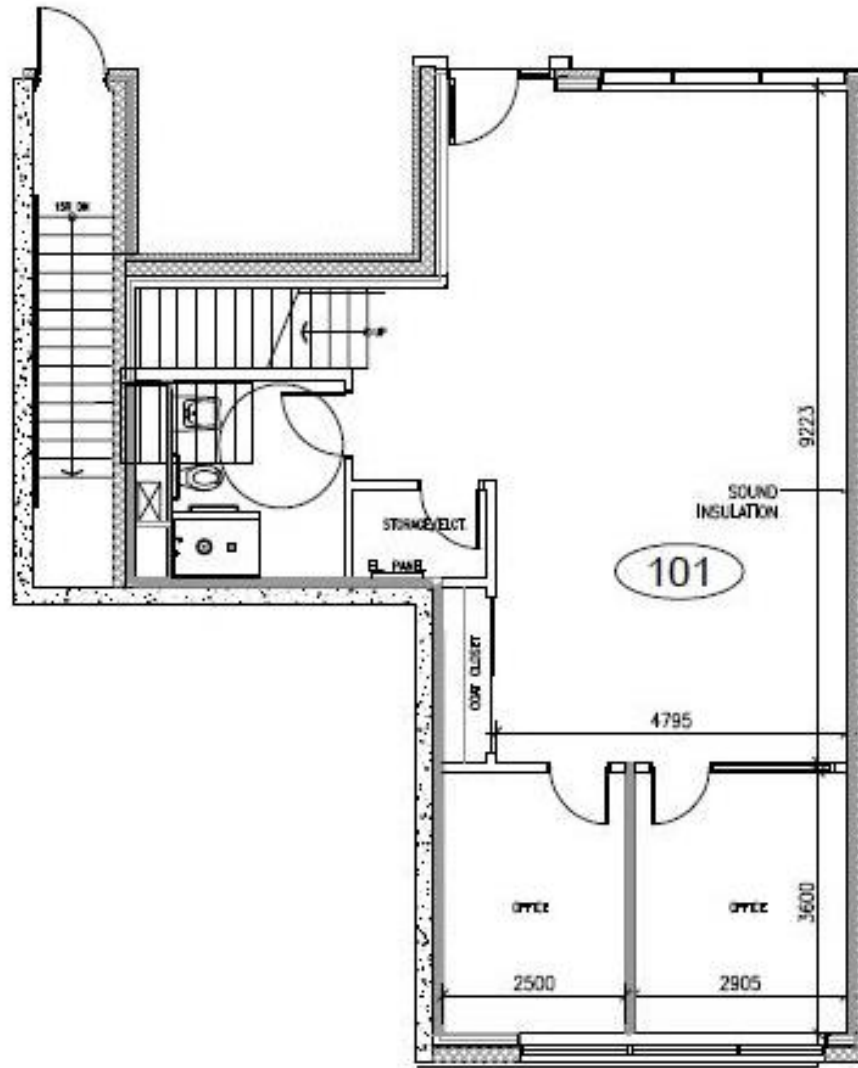
\*Please contact listing agent for more details





LOCATION MAP

42 SOUSA MENDES STREET | FOR LEASE



GROUND



# METROPOLITAN COMMERCIAL

626 King St West, Suite 302  
Toronto, ON  
M5V 1M7

[www.metcomrealty.com](http://www.metcomrealty.com)

## CONTACT:

**ELISE NGO-WONG\***  
Sales Representative  
416.703.6621 ext. 277  
[elise@metcomrealty.com](mailto:elise@metcomrealty.com)