

FOR LEASE | OFFICE SPACE

# 421 BLOOR STREET EAST

TORONTO | ON



METROPOLITAN  
COMMERCIAL





## DETAILS

---

Location	Sherbourne and Bloor Street East <a href="#">Click Here for Map</a>
Building Details	Rentable Area: 1,548 Sq Ft
Term	1-6 Years
Rental Rate	\$36.00 PSF/YR Gross

## FEATURES

---

- Terrifically located office space at Sherbourne Subway Station on the south-west corner of Bloor Street East and Sherbourne Street.
- Well maintained building and units with a corner office and large windows facing Bloor and Sherbourne.
- Features an in-suite kitchenette.
- Use of one parking spot included.
- Full-use of shared washrooms on floor.
- Located beside large medical building and conveniently on top of a Tim Hortons.
- Easily accessible being directly across the street from Sherbourne TTC station and only a couple minutes drive from the DVP.

**RENTAL INCENTIVE: Pay only condo fees + taxes  
until February 2020**

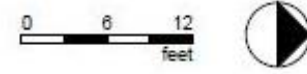
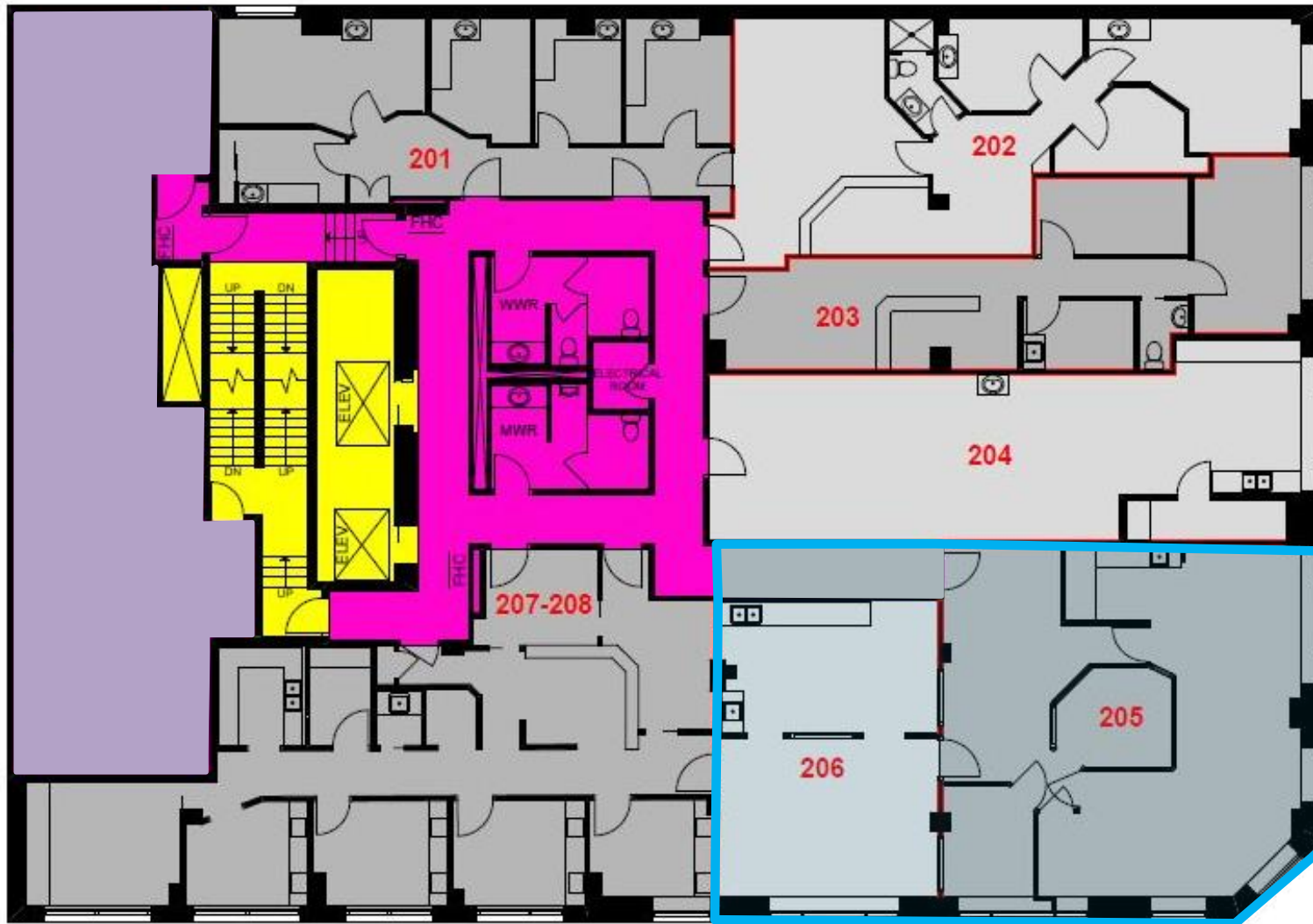


PHOTOS

Virtual Tour Link: [Click Here](#)

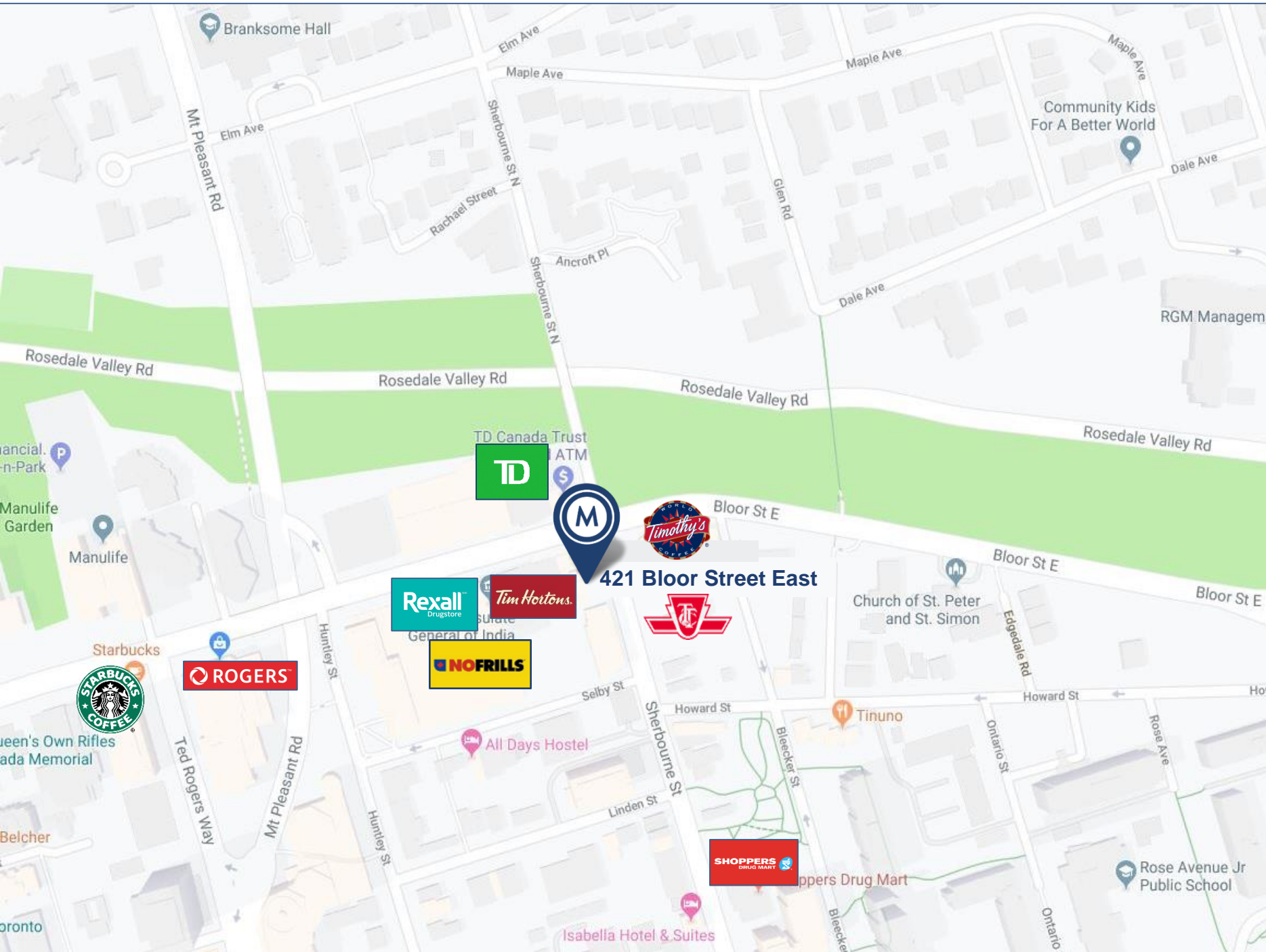
The Subject property, Units 205 and 206, can be identified in the Virtual tour with hardwood floors (also refer to floorplan). Units 207 and 208 are also noted in tour and floorplan. It is newly renovated turn key dental office space, which may also be converted to office. Please speak to Agent for further details.

**421 BLOOR STREET EAST | FOR LEASE**



 Floor Common Area

 Subject Unit





# METROPOLITAN COMMERCIAL

626 King St West, Suite 302  
Toronto, ON  
M5V 1M7

[www.metcomrealty.com](http://www.metcomrealty.com)

## CONTACT:

**STEVEN PHILLIPS\***  
Sales Representative  
416.703.6621 Ext. 233  
[steven.phillips@metcomrealty.com](mailto:steven.phillips@metcomrealty.com)