



METROPOLITAN
COMMERCIAL



1090 College Street

Retail/Office Space For Lease



Property Details

LOCATION	On College Street, East of Dufferin Street Click Here
BUILDING DETAILS	700 SF
RENTAL RATE	\$1,995/Month
ADDITIONAL RENT (T.M.I)	\$860 + Utilities
APPROX. MONTHLY TOTAL	\$2,855 + Utilities
TERM	3-5 Years
POSSESSION	Immediate



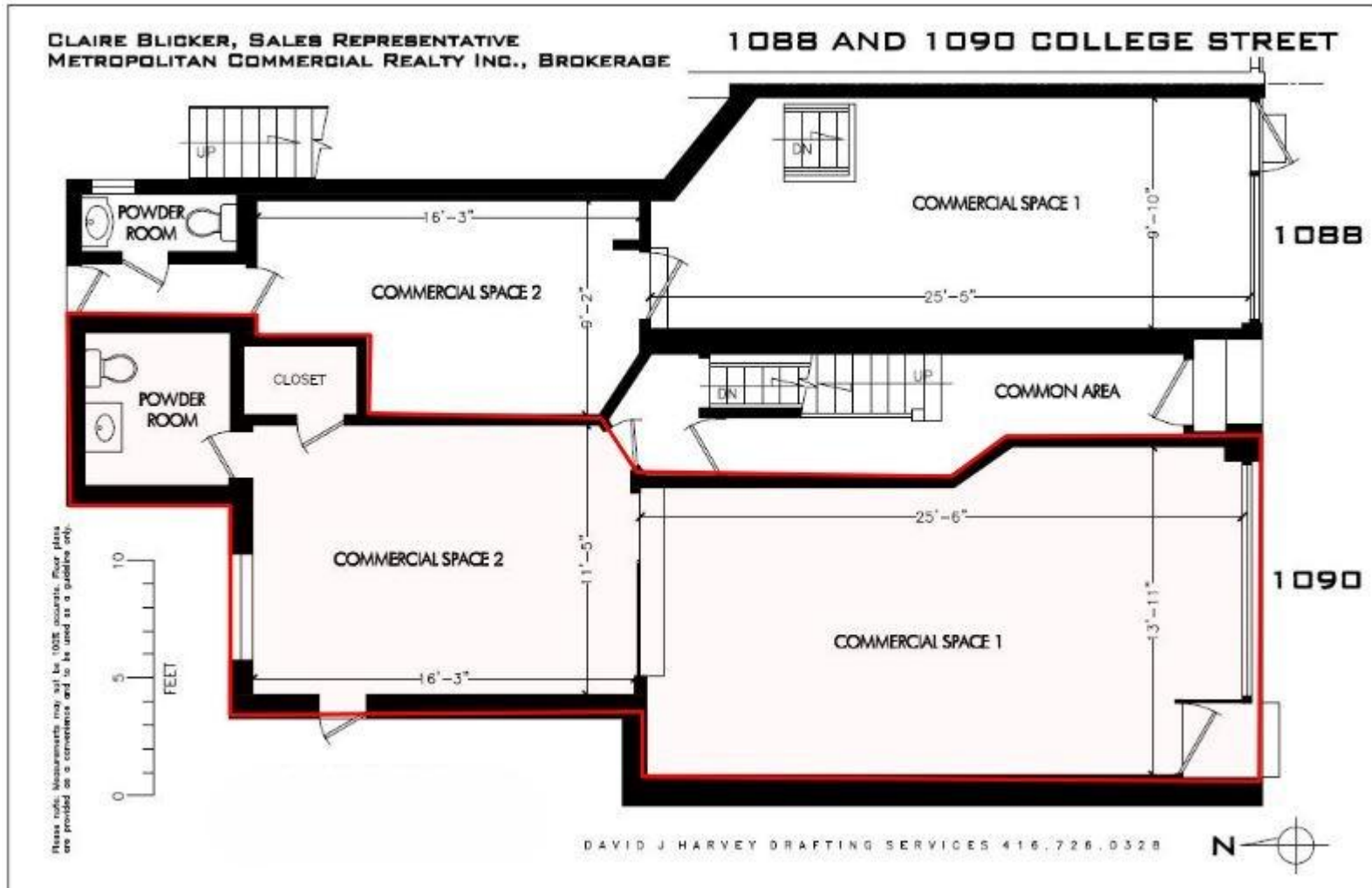
Features

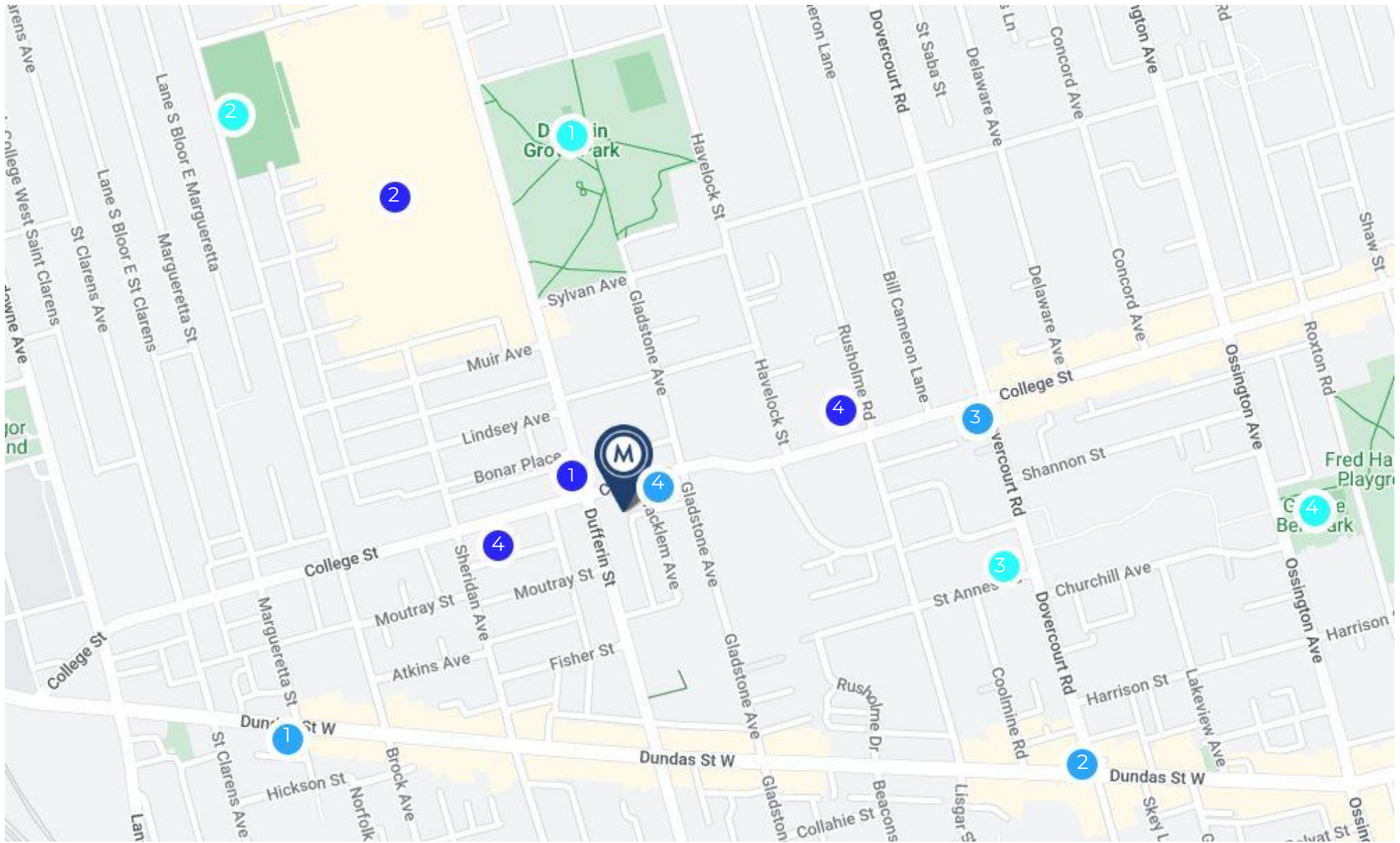
- Variety of retail uses considered including gallery, medical, financial, tech or light food use
- Also ideal for office use
- Good visibility with 15 ft of frontage on College Street
- Nice open bright space with high ceilings
- 1-2 parking spots available, charged separately
- Washroom on main floor



3







Food/Drinks

1. Dominoes
2. Bar Mordecai
3. Starbucks
4. The Common Espresso Bar

Shopping

1. Star Convenience Store
2. Walmart Supercentre
3. Dollarama
4. Pharmasave Toronto Pharmacy

Entertainment/Accommodations

1. Dufferin Grove Park
2. Brockton Stadium
3. St Annes Suites
4. George Ben Park



METROPOLITAN
COMMERCIAL



Claire Blicker
Vice President
W. 416.703.6621 ext. 232
claire.blicker@metcomrealty.com

150 BEVERLEY STREET, UNIT 1

TORONTO, ON | M5T 1Y5

416.703.6621

WWW.METCOMREALTY.COM

The information contained herein has been gathered from sources deemed reliable. However, Metropolitan Commercial Realty Inc., Brokerage, its agents, or employees make no representations or warranties on the accuracy of said information. Prospective tenants and their agents are advised to independently verify any information provided herein. Metropolitan Commercial Realty Inc., Brokerage