

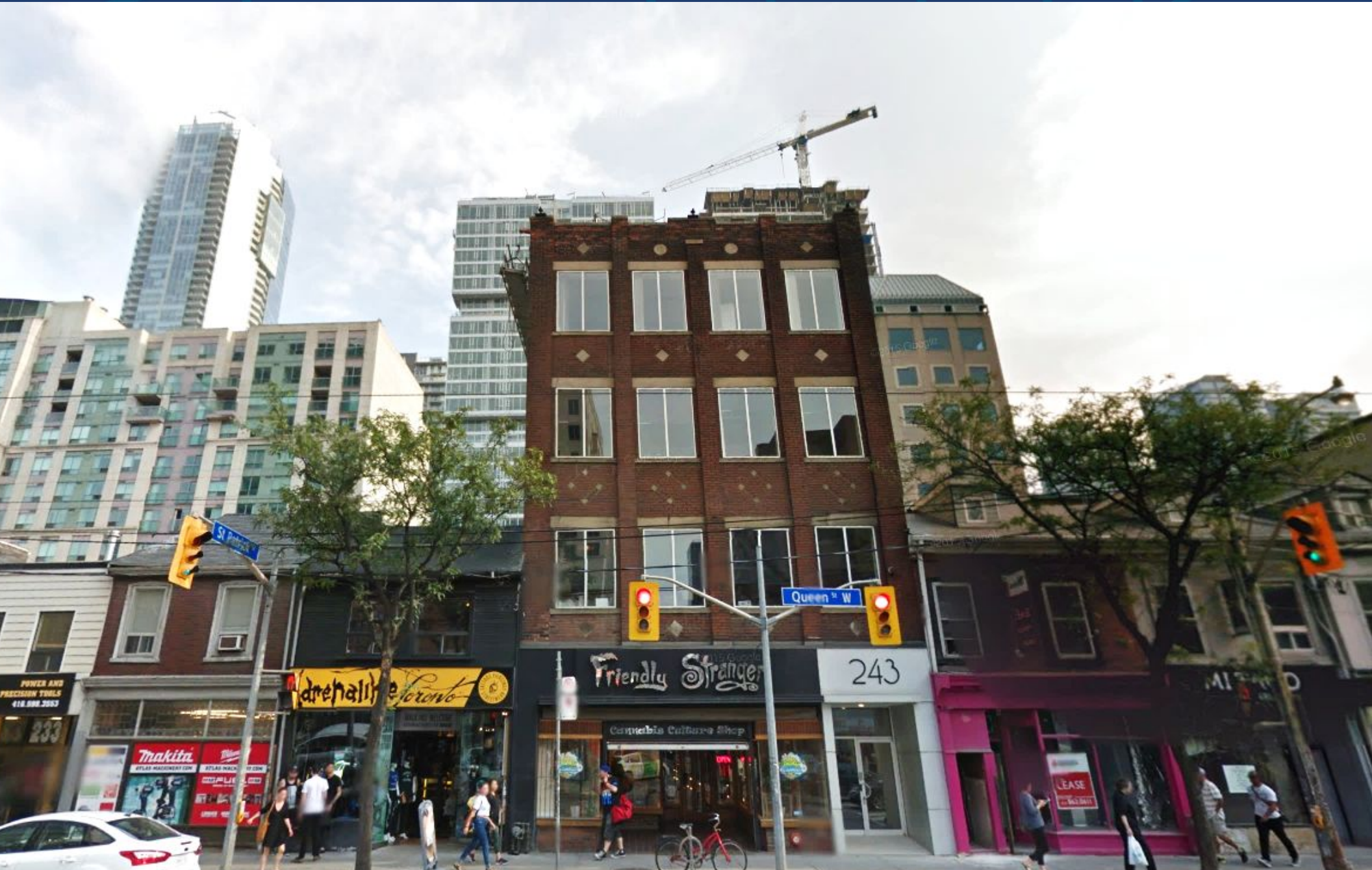
FOR LEASE | 2 FLOORS OF OFFICE SPACE

# 243 QUEEN STREET WEST

TORONTO | ON



METROPOLITAN  
COMMERCIAL





## DETAILS

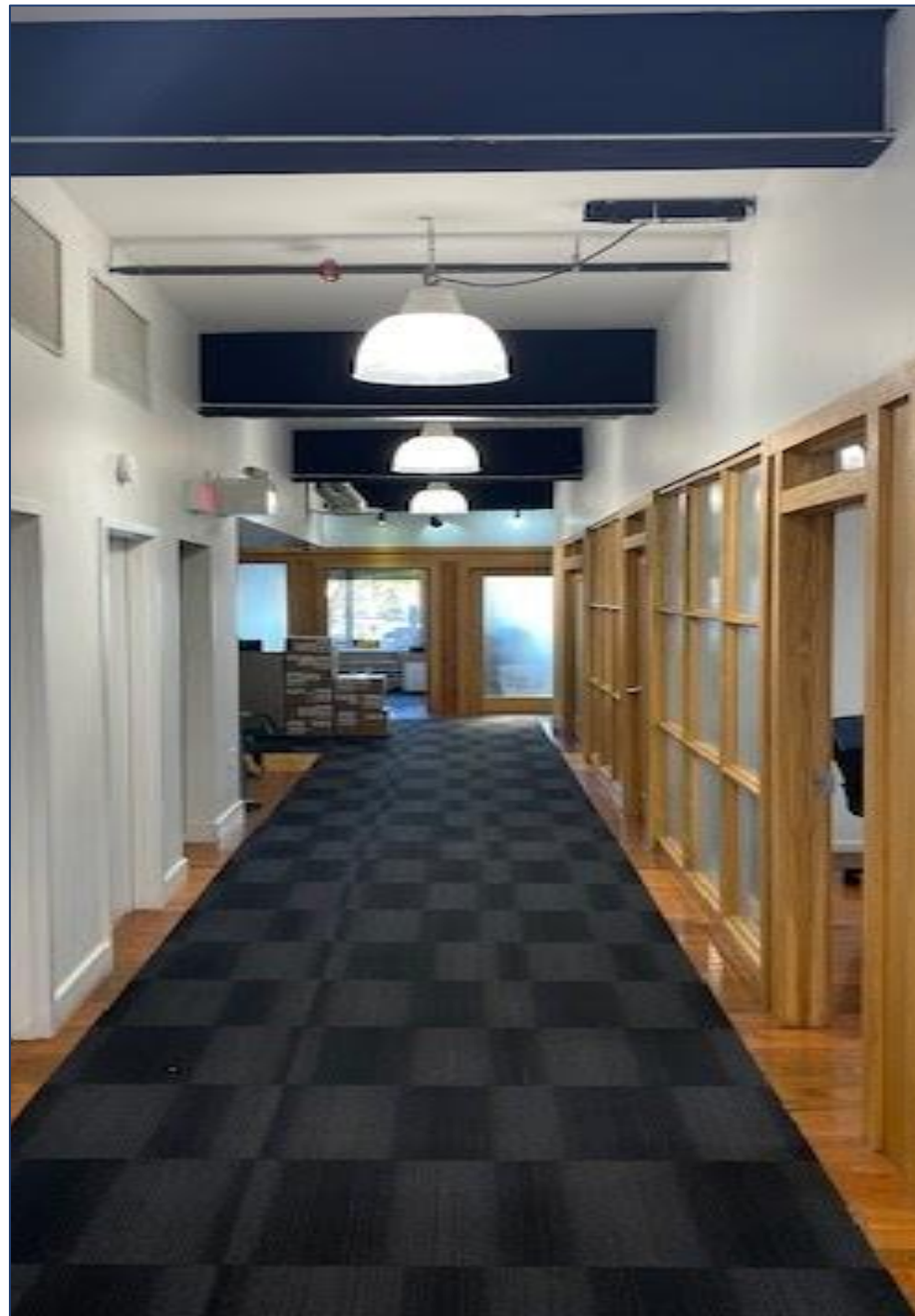
---

<b>Location</b>	South side of Queen Street West, just West of University Avenue. <a href="#">Click Here for Map</a>
<b>Building Details</b>	2,989 per floor
<b>Net Rental Rate</b>	Third Floor - \$28.00 PSF/YR Fourth Floor Also Available
<b>Additional Rent</b>	\$18.41 PSF/YR (T.M.I)
<b>Term</b>	1-5 Years (dependent on covenant)
<b>Possession</b>	Immediate

## FEATURES

---

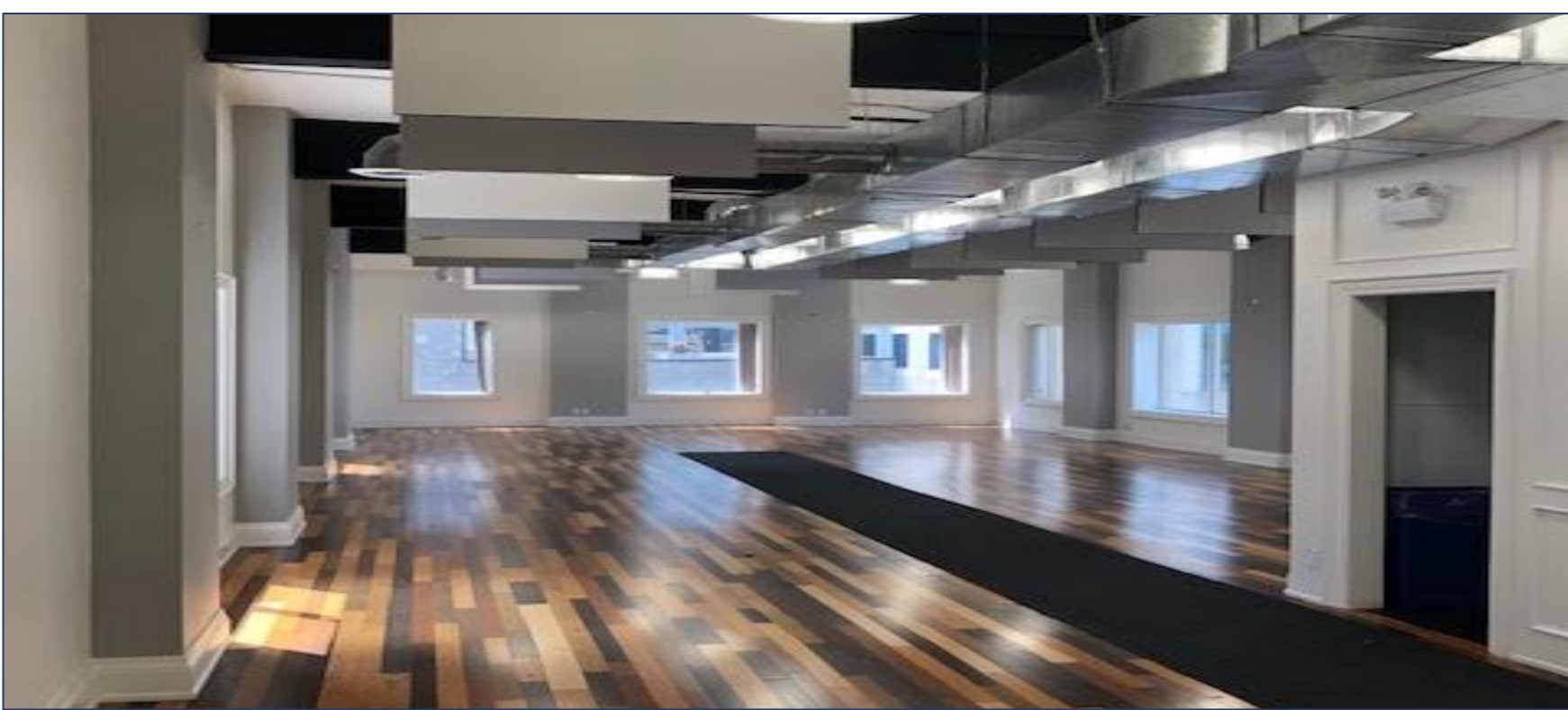
- Entire Floor with elevator walk off to reception
- Steps to Osgoode Subway, City Hall and the PATH
- Passenger elevator and wheelchair accessible
- Security deposit required by all tenants
- In house cleaning (mandatory) service starting at \$800.00/month – includes full cleaning every week/day and garbage removal Monday-Thursday



**SECOND FLOOR PICTURES**



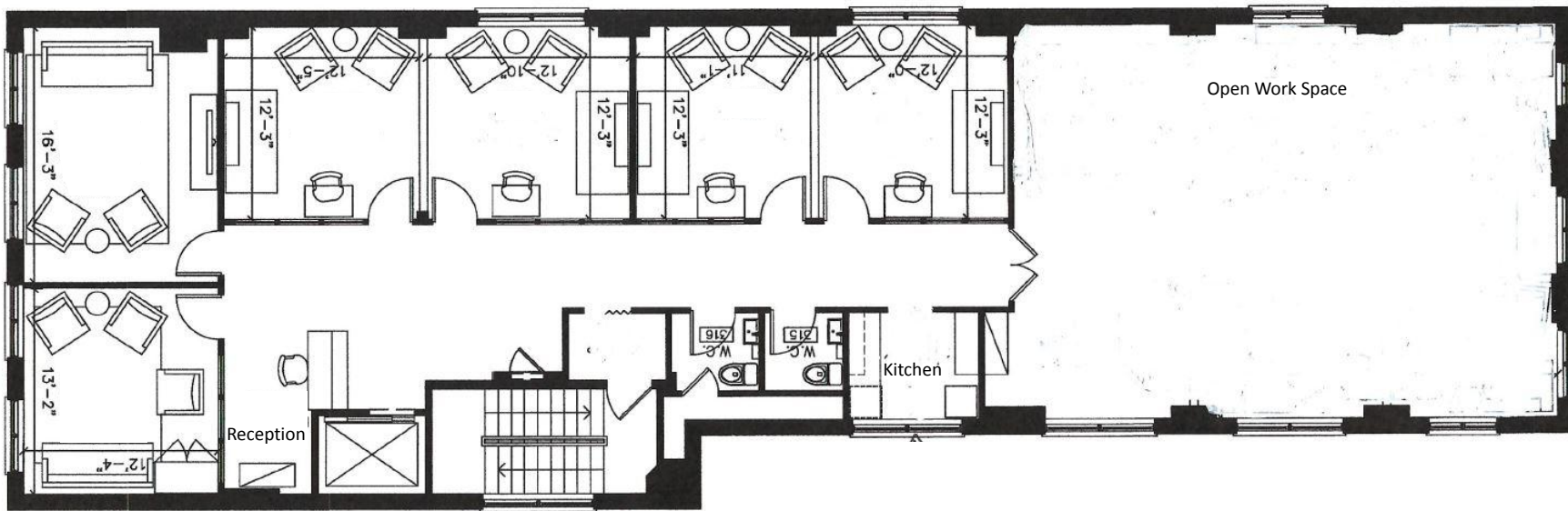
FOURTH FLOOR PICTURES



243 QUEEN STREET WEST | FOR LEASE



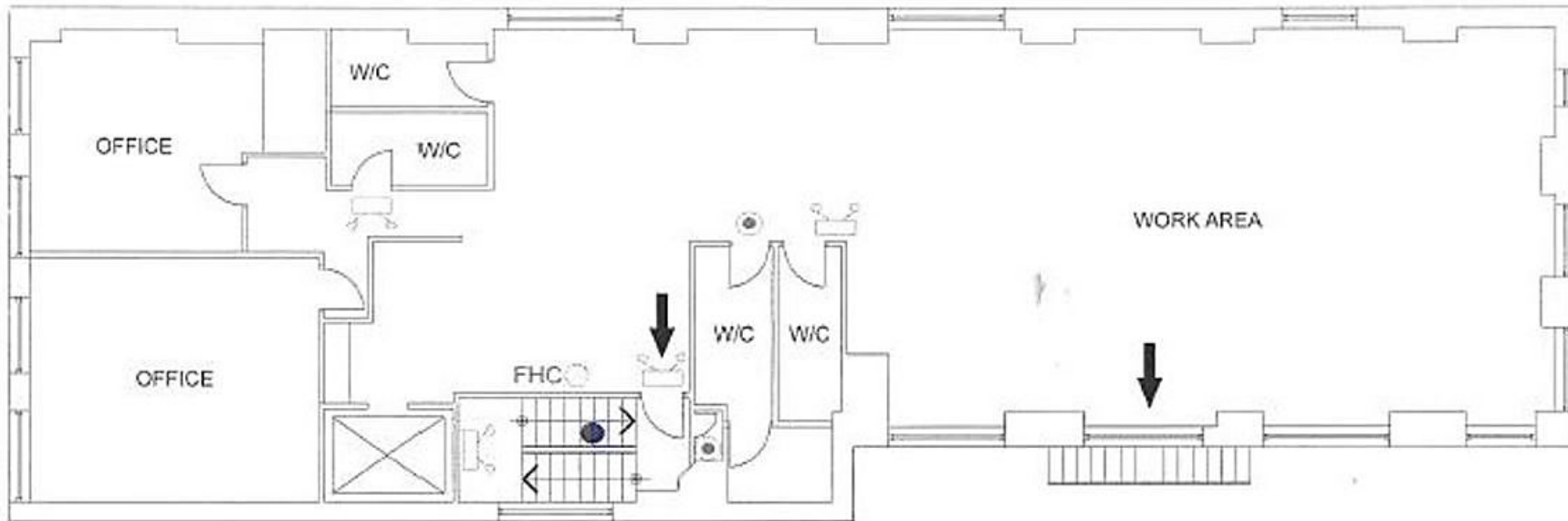
# THIRD FLOOR



THIRD FLOOR FLOOR PLAN



## FOURTH FLOOR





**METROPOLITAN  
COMMERCIAL**

**TIM NOVAK**

Vice President

Sales Representative

416.703.6621 x 246

[tim.novak@metcomrealty.com](mailto:tim.novak@metcomrealty.com)

150 BEVERLEY STREET, UNIT 1

TORONTO, ON | M5T1Y5

416.703.6621

[WWW.METCOMREALTY.COM](http://WWW.METCOMREALTY.COM)

The information contained herein has been gathered from sources deemed reliable. However, Metropolitan Commercial Realty Inc., Brokerage, its agents, or employees make no representations or warranties on the accuracy of said information. Prospective tenants and their agents are advised to independently verify any information provided herein.

Metropolitan Commercial Realty Inc., Brokerage