

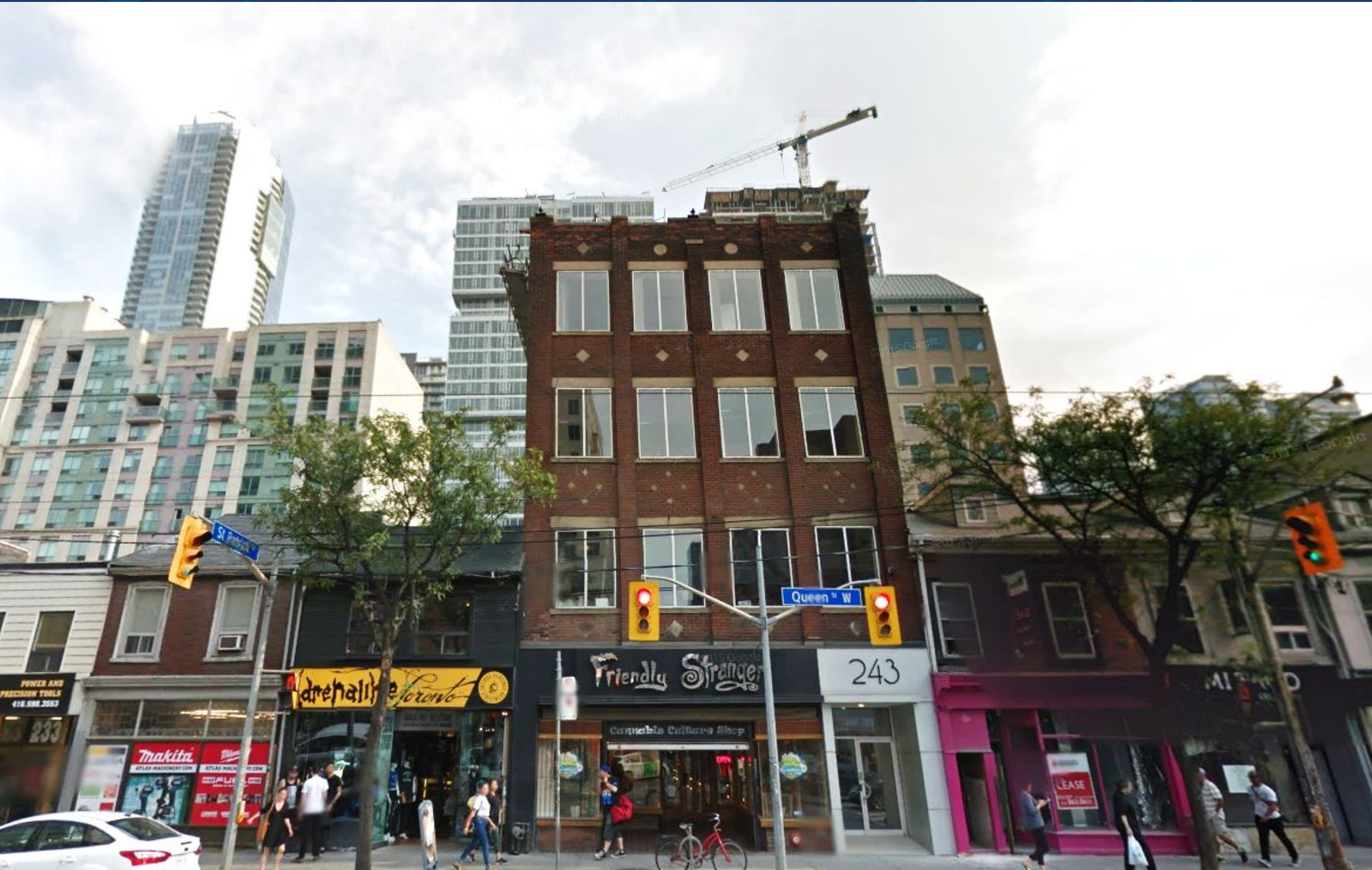
FOR LEASE | 2 FLOORS OF OFFICE SPACE

243 QUEEN STREET WEST

TORONTO | ON



METROPOLITAN
COMMERCIAL



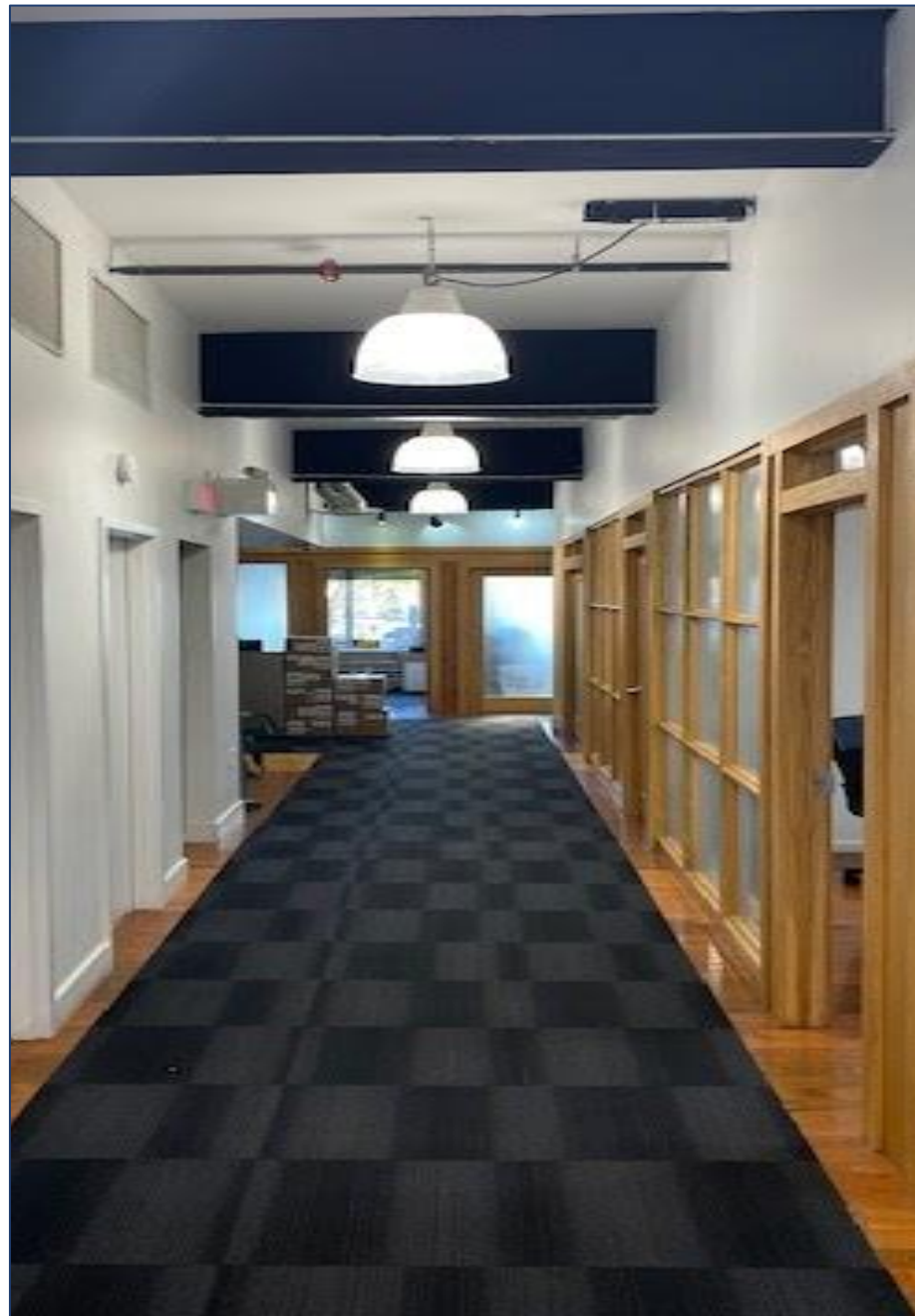


DETAILS

Location	South side of Queen Street West, just West of University Avenue. Click Here for Map
Building Details	2,989 per floor
Net Rental Rate	Third Floor - \$35.00 PSF/YR Fourth Floor - \$35.00 PSF/YR
Additional Rent	\$18.41 PSF/YR (T.M.I)
Term	1-5 Years (dependent on covenant)
Possession	Immediate

FEATURES

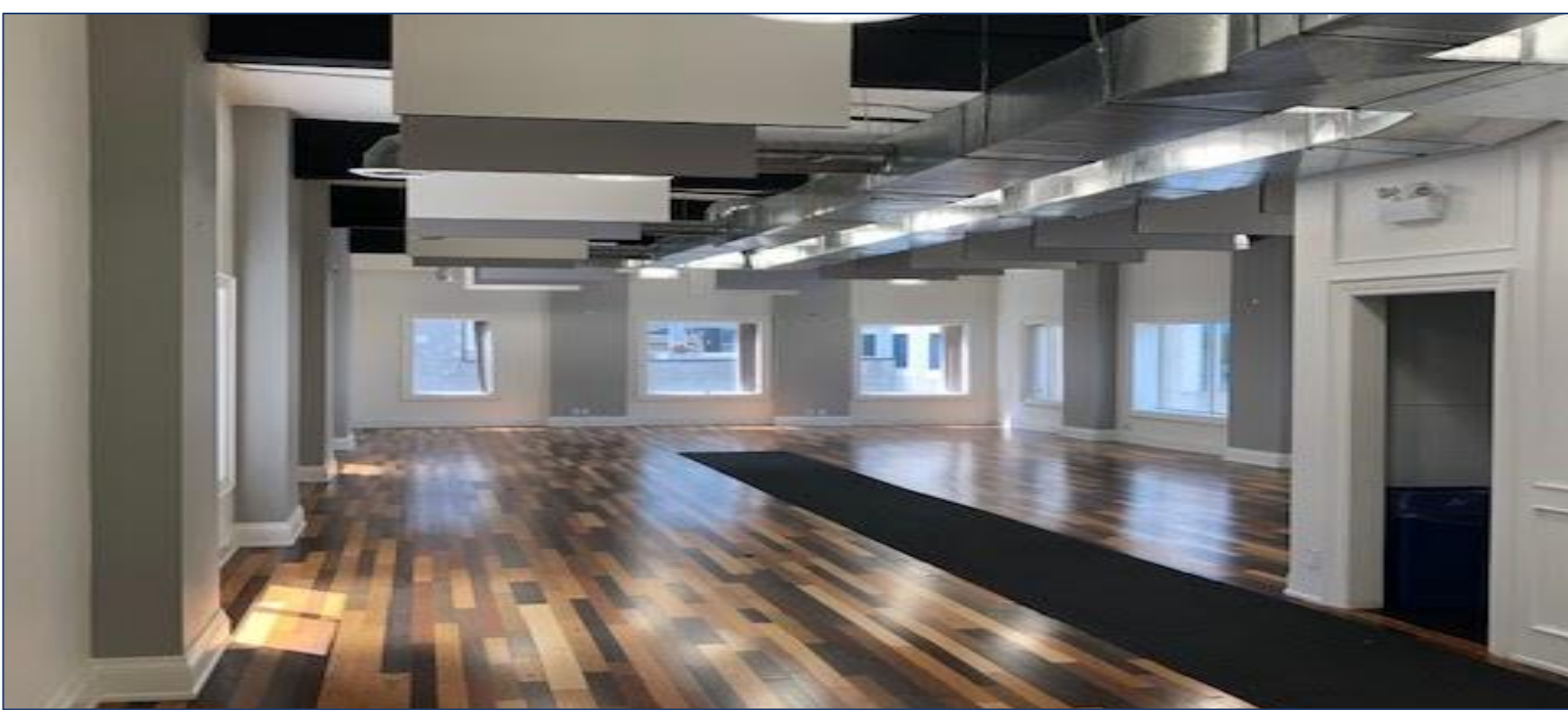
- Landlord not leasing multiple floors to a single tenant
- Steps to Osgoode Subway, City Hall and the PATH
- Passenger elevator and wheelchair accessible
- Security deposit required by all tenants
- In house cleaning (mandatory) service \$800.00/month – includes full cleaning every week/day and garbage removal Monday-Thursday.
- Also available: Lower Level (1,400 SF) with elevator access and rear shipping.



SECOND FLOOR PICTURES



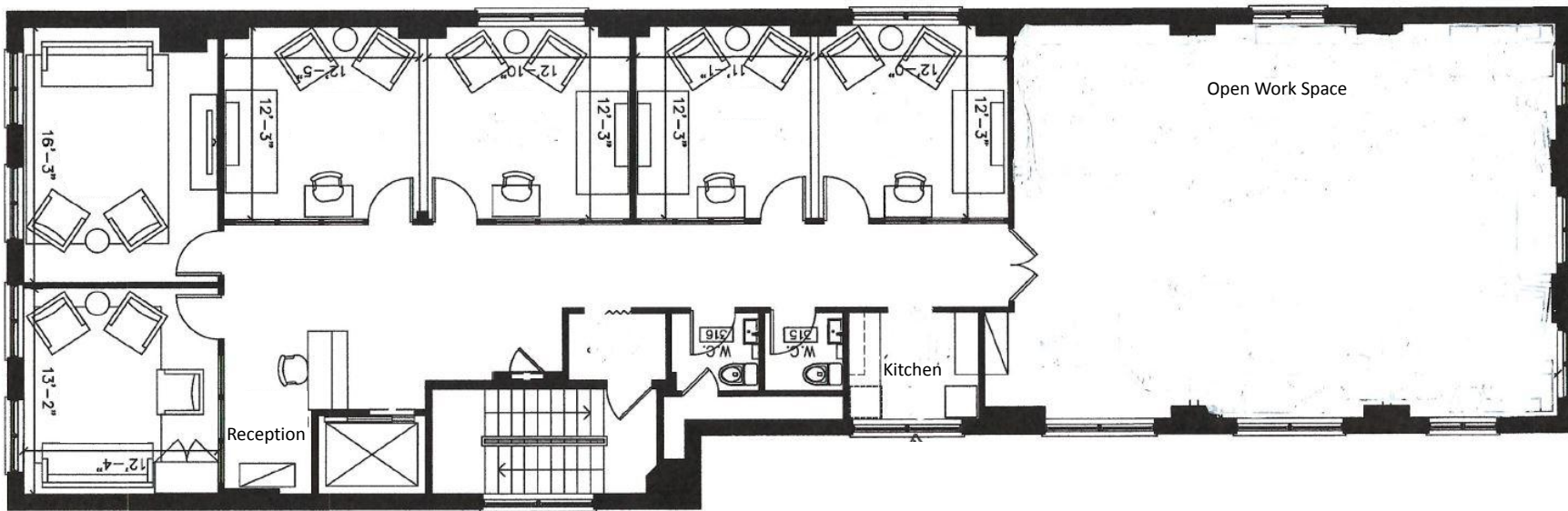
FOURTH FLOOR PICTURES



243 QUEEN STREET WEST | FOR LEASE



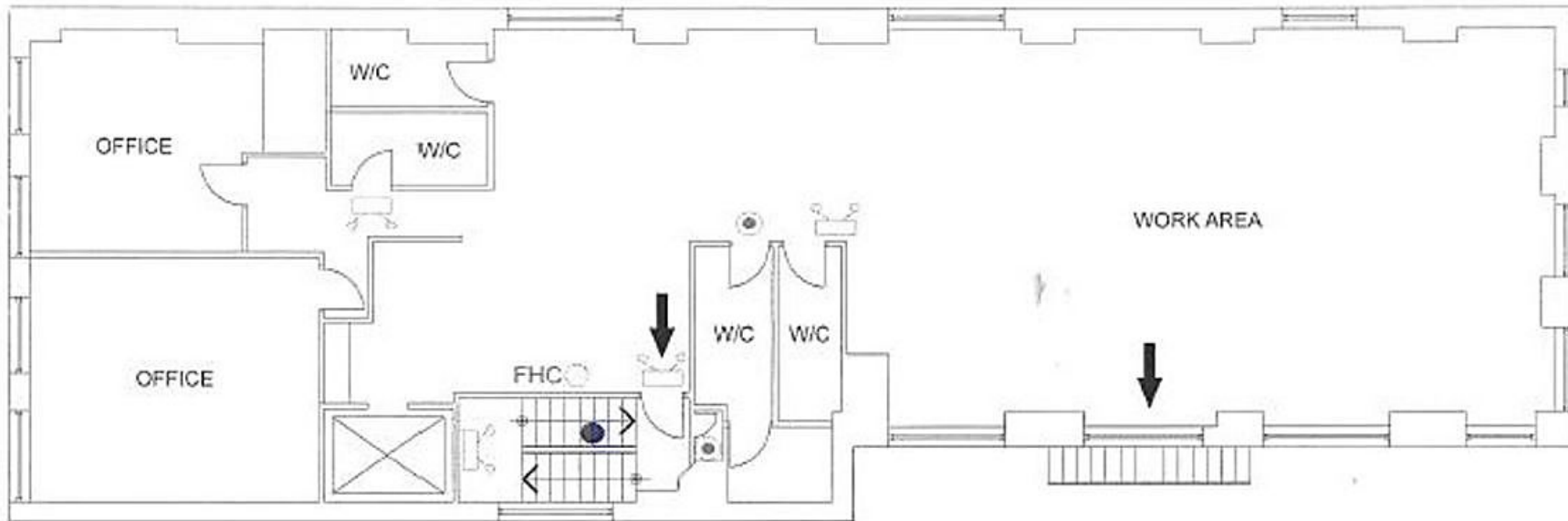
THIRD FLOOR



THIRD FLOOR FLOOR PLAN



FOURTH FLOOR





**METROPOLITAN
COMMERCIAL**

TIM NOVAK

Vice President

Sales Representative

416.703.6621 x 246

tim.novak@metcomrealty.com

150 BEVERLEY STREET, UNIT 1

TORONTO, ON | M5T1Y5

416.703.6621

WWW.METCOMREALTY.COM

The information contained herein has been gathered from sources deemed reliable. However, Metropolitan Commercial Realty Inc., Brokerage, its agents, or employees make no representations or warranties on the accuracy of said information. Prospective tenants and their agents are advised to independently verify any information provided herein.

Metropolitan Commercial Realty Inc., Brokerage