

FOR LEASE | PRIME OFFICE SPACE | SECOND FLOOR

392 SPADINA AVENUE

TORONTO | ON



METROPOLITAN
COMMERCIAL





DETAILS

Location	Located on Spadina Ave, Between College St and Dundas St W Click Here for Map
Unit Details	1,050 SF
Rental Rate	\$33.00 PSF/YR Semi-Gross
Additional Rent	Separately Metered Gas & Hydro + Proportionate Share of Water
Possession	Immediately

FEATURES

- Bright unit with windows on three sides
- Landlord pays for monitored building security and fire alarm
- Triple-glazed newer front windows
- Double-glazed tall laminate entrance door from Spadina
- Pre-wired with Cat5e
- Fire exit and lighting system

Average Household Income*



\$117,204

Total Population*



372,514

Projected 10-Year Population Growth*



+14.25%

392 SPADINA AVENUE | FOR LEASE

*Source: CoStar, 2018 3km radius



AREA MAP



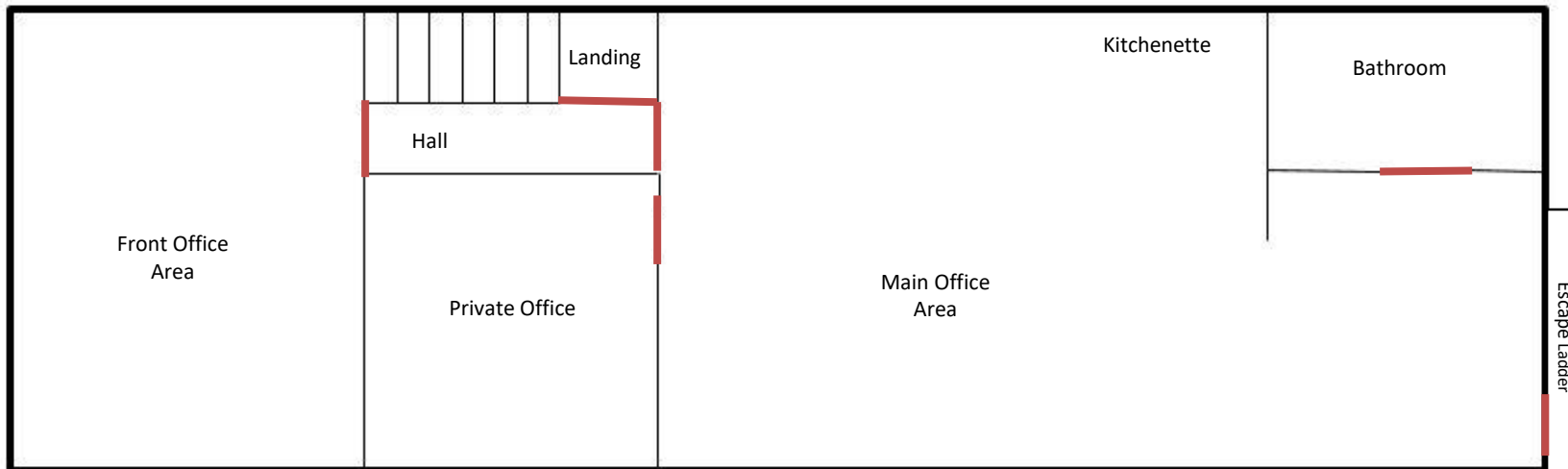
392 SPADINA AVENUE | FOR LEASE



UNIT PHOTOS



FLOOR PLAN



*approximate plan estimation

FLOOR PLAN



METROPOLITAN COMMERCIAL

626 King St West, Suite 302
Toronto, ON
M5V 1M7

www.metcomrealty.com

CONTACT:

Amir **Nourbakhsh***

416.703.6621 x252

amir@metcomrealty.com

Jesse **Roth***

416.703.6621 x243

jesse.roth@metcomrealty.com