

FOR LEASE | FLEX SPACE
915 DUPONT STREET
TORONTO, ON



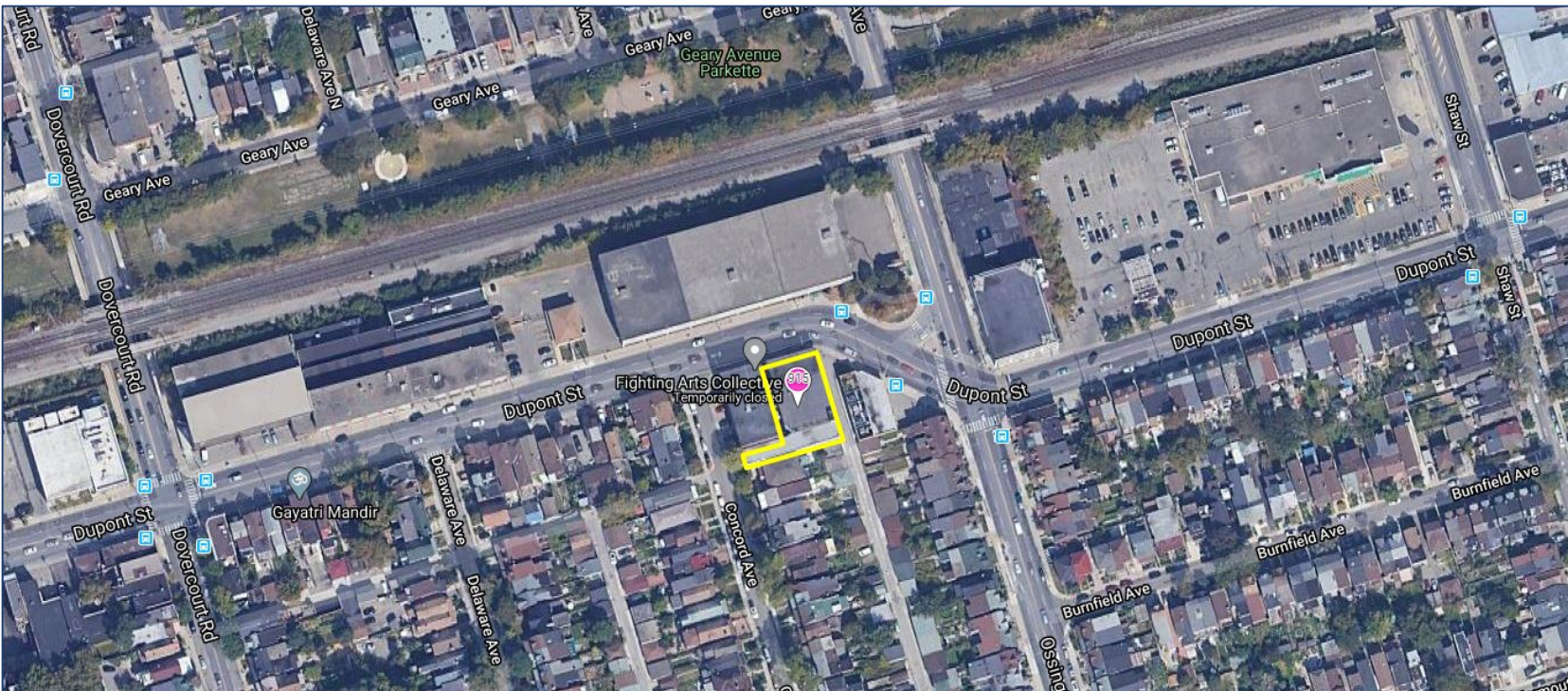


DETAILS

Location	Dupont Street, West of Ossington Avenue Click Here for Map	
Building Details	First Floor	6,500 SF
	Second Floor	8,200 SF
	(Space can be divisible to 2,000 SF unit or combined to as large as 14,700 SF)	
Semi-Gross Rental Rate	\$35.00 PSF/YR + Utilities	
Tenant Improvement Allowance	TBD	
Term	3-10 Years	
Possession	Immediately	

PROPERTY FEATURES

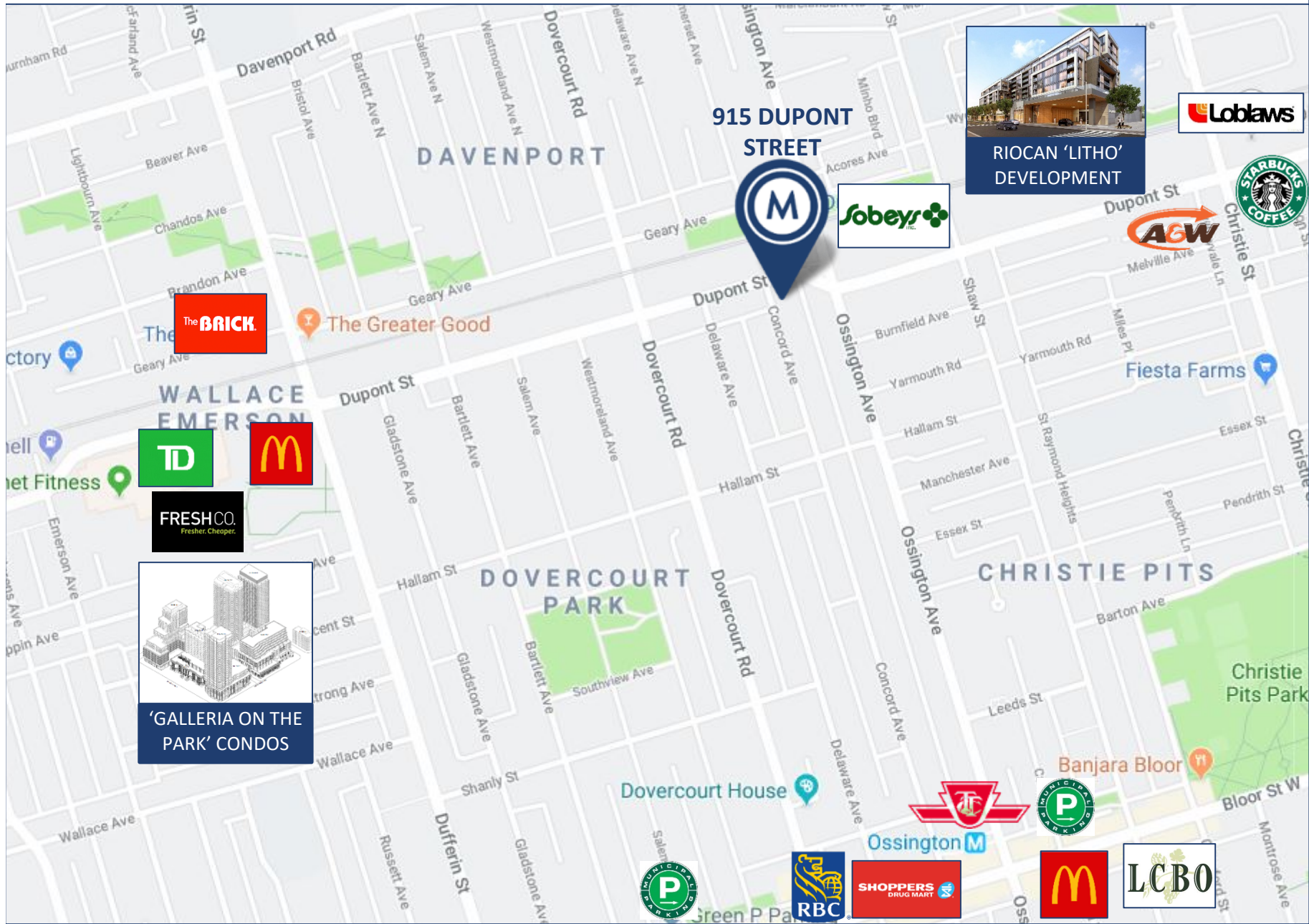
- 14,700 SF feet of open-concept “blank slate” space at the Dupont St. and Ossington Ave. intersection
- Classic 1930's industrial two-storey building
- Ideal for a variety of uses (creative, studio, fitness, etc.)
- Parking available (Limited)
- 12' ceiling height
- TTC accessible via the 63 Ossington bus from Bloor Street West, (Ossington Subway Station)
- 3 minute walk to Sobeys, Faema Café and Loblaws



915 DUPONT STREET | FOR LEASE



BUILDING PROFILE/ AERIAL MAP



915 DUPONT STREET



RIOCAN 'LITHO' DEVELOPMENT



The Greater Good



'GALLERIA ON THE PARK' CONDOS

AREA MAP

915 DUPONT STREET | FOR LEASE



PHOTOS

915 DUPONT STREET | FOR LEASE

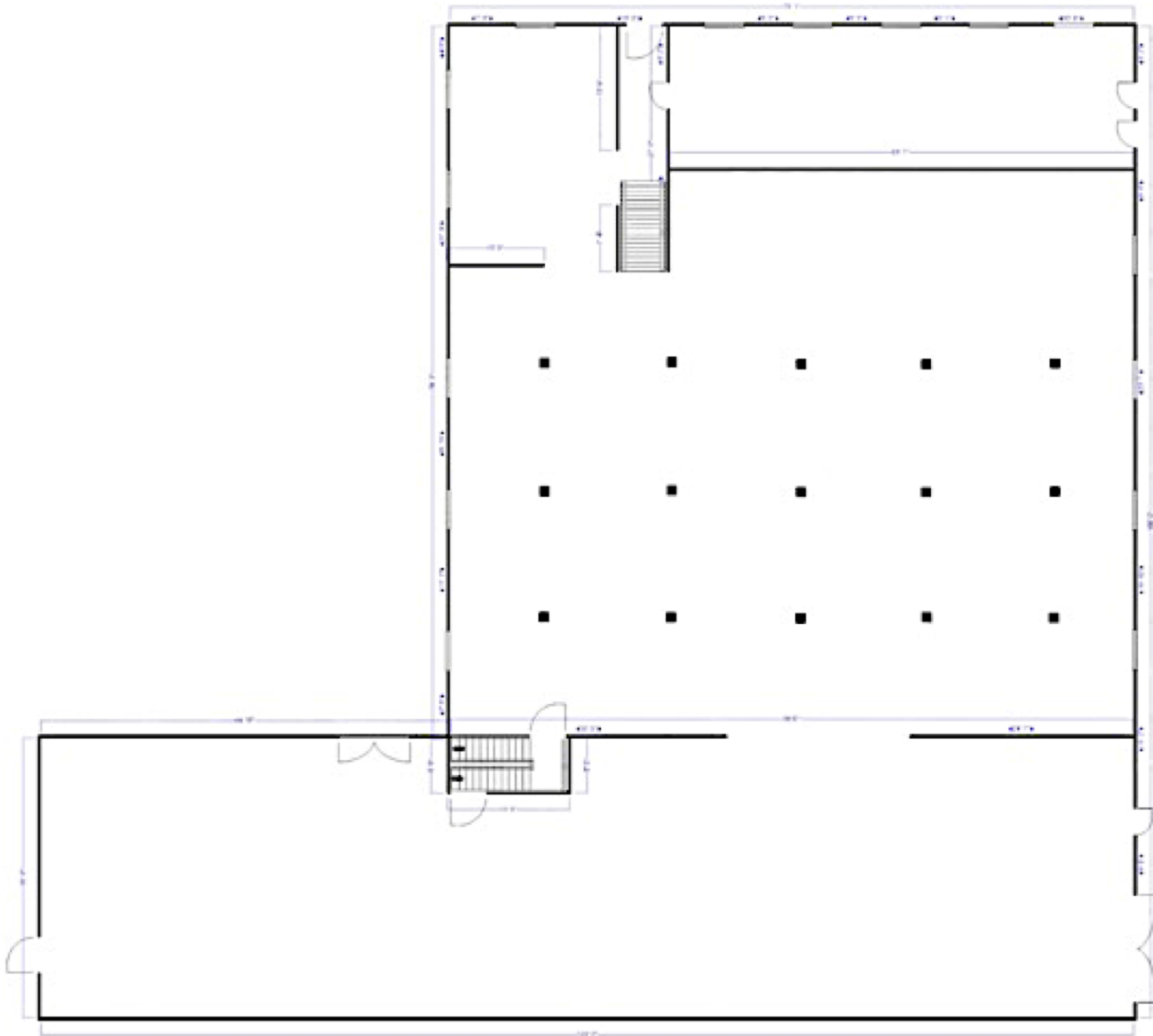


Rendering of Potential Finish to Space



PHOTOS

First Floor

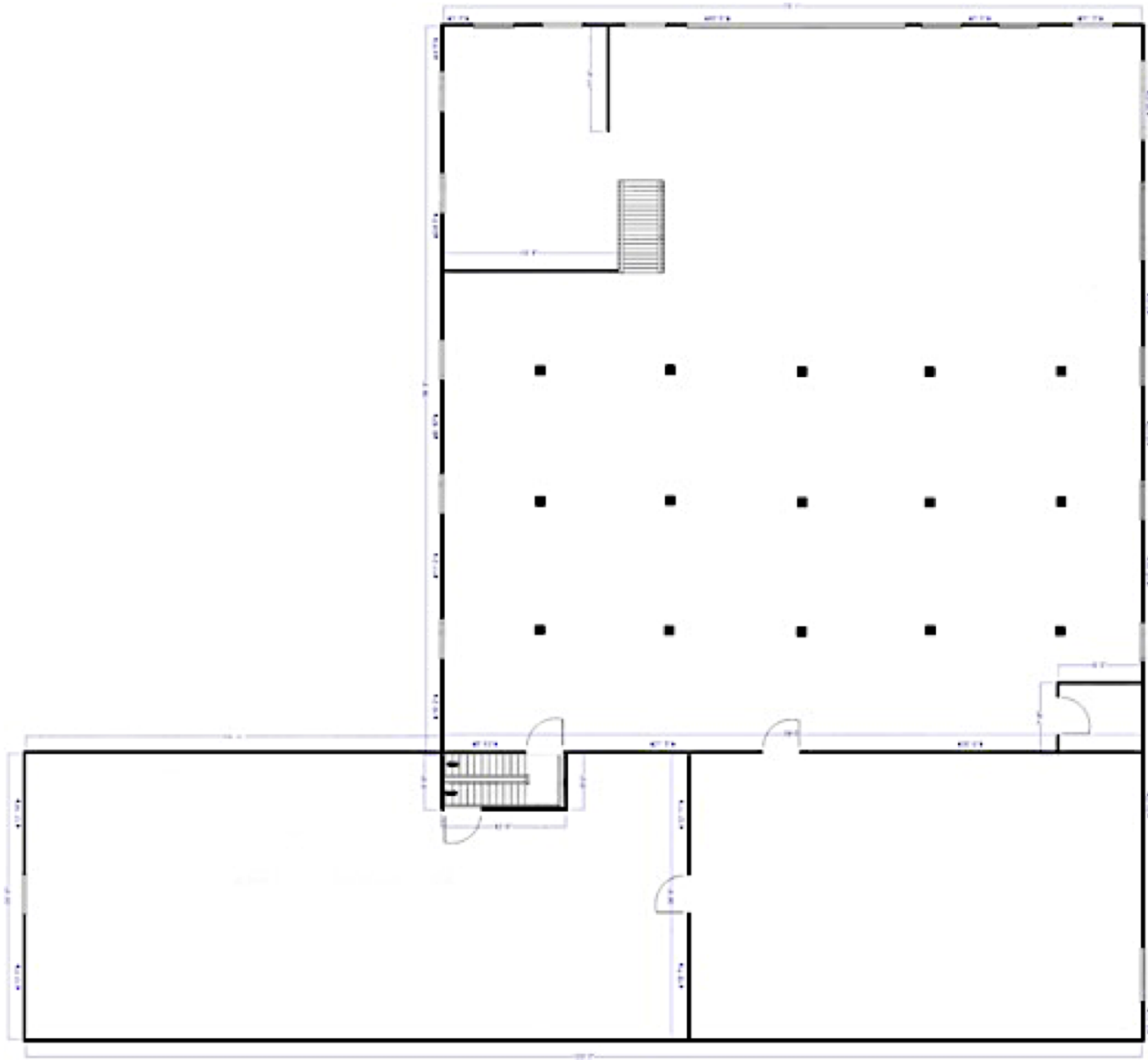


915 DUPONT STREET | FOR LEASE



FLOOR PLAN

Second Floor



915 DUPONT STREET | FOR LEASE



FLOOR PLAN



METROPOLITAN COMMERCIAL

626 King St West, Suite 302
Toronto, ON
M5V 1M7

www.metcomrealty.com

CONTACT:

PAUL KOTYK*
Senior Associate
416.703.6621 Ext. 245
paul.kotyk@metcomrealty.com

TIM NOVAK*
Senior Vice President
416.703.6621 Ext. 246
Tim.novak@metcomrealty.com