

FOR LEASE | UNIQUE OFFICE SPACE

950 DUPONT STREET

TORONTO | ON



METROPOLITAN
COMMERCIAL





DETAILS

Location North Side of Dupont Street, just East of Dovercourt Road [Click Here for Map](#)

Building Details	<u>Unit</u>	<u>Size</u>
	Glass Box Unit	6,500 SF
	Basement	2,600 SF

*Note – All measurements are approximate and will be confirmed prior to offering

Term 3 - 5 Years

Possession 60 to 90 Days

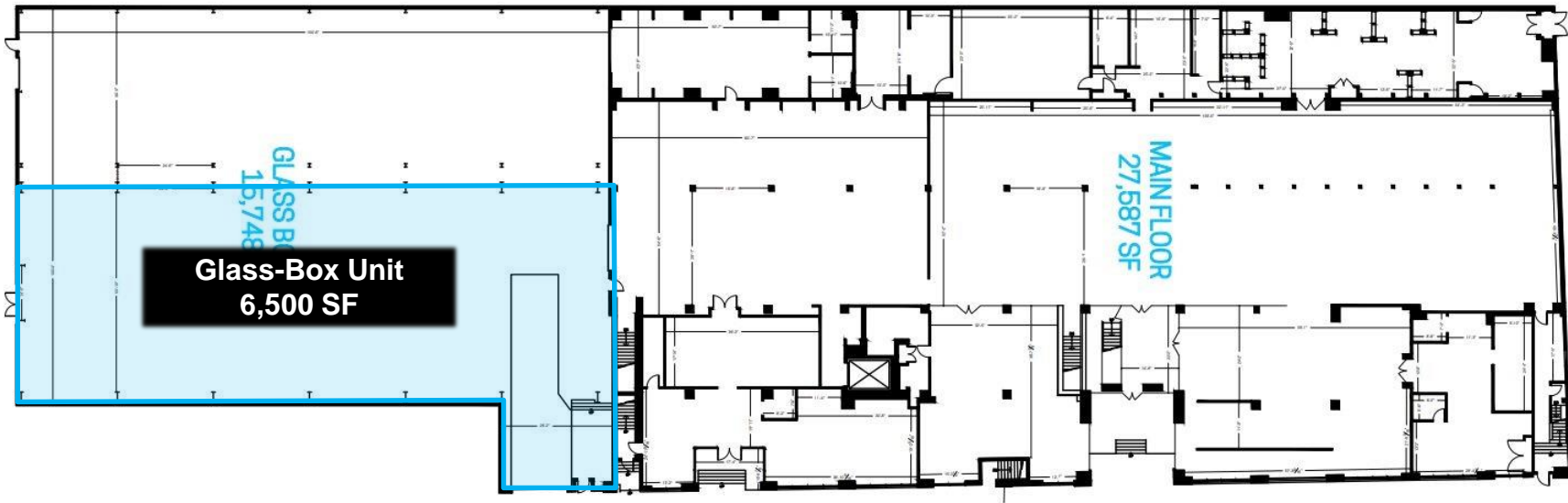
Rental Rate \$35.00 PSF/YR Semi-Gross + Hydro

FEATURES

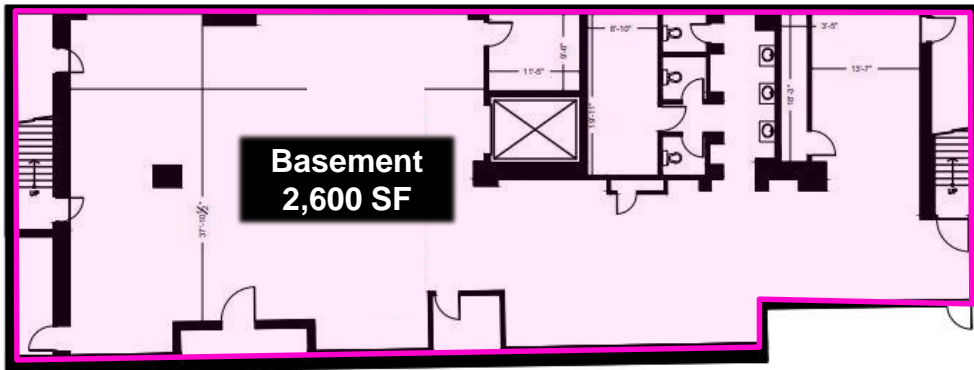
- Prestigious glass box unique space
- 1 Parking Spot per 1,500 SF leased.
- Sun Drenched Office Space with Soaring 40' Ceilings
- 10 Minute Walk from Dovercourt TTC Subway Station

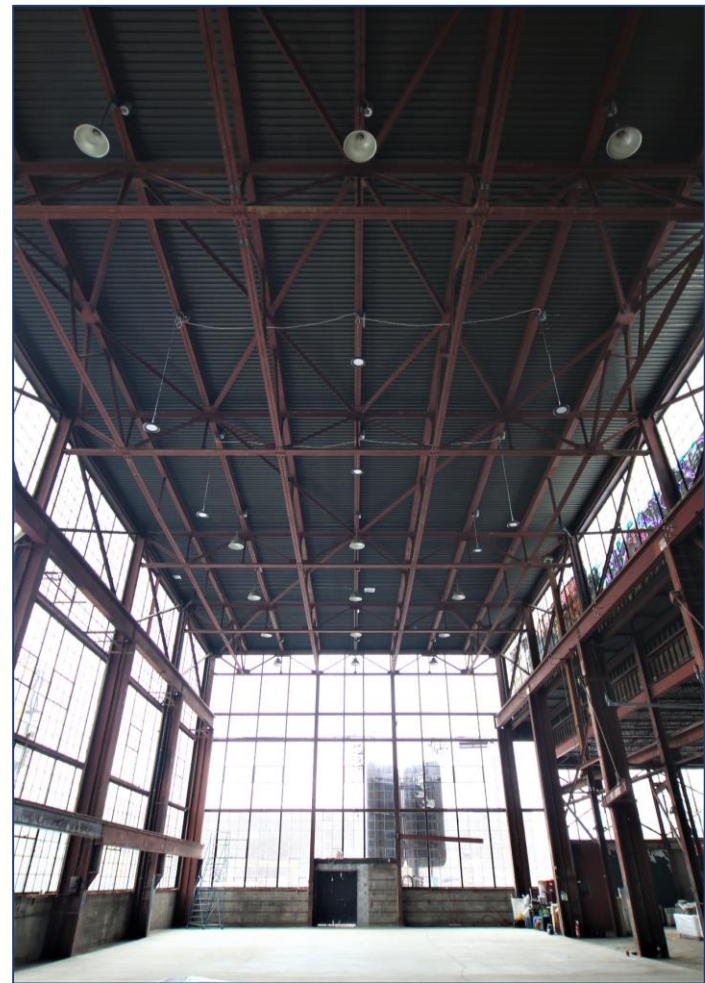
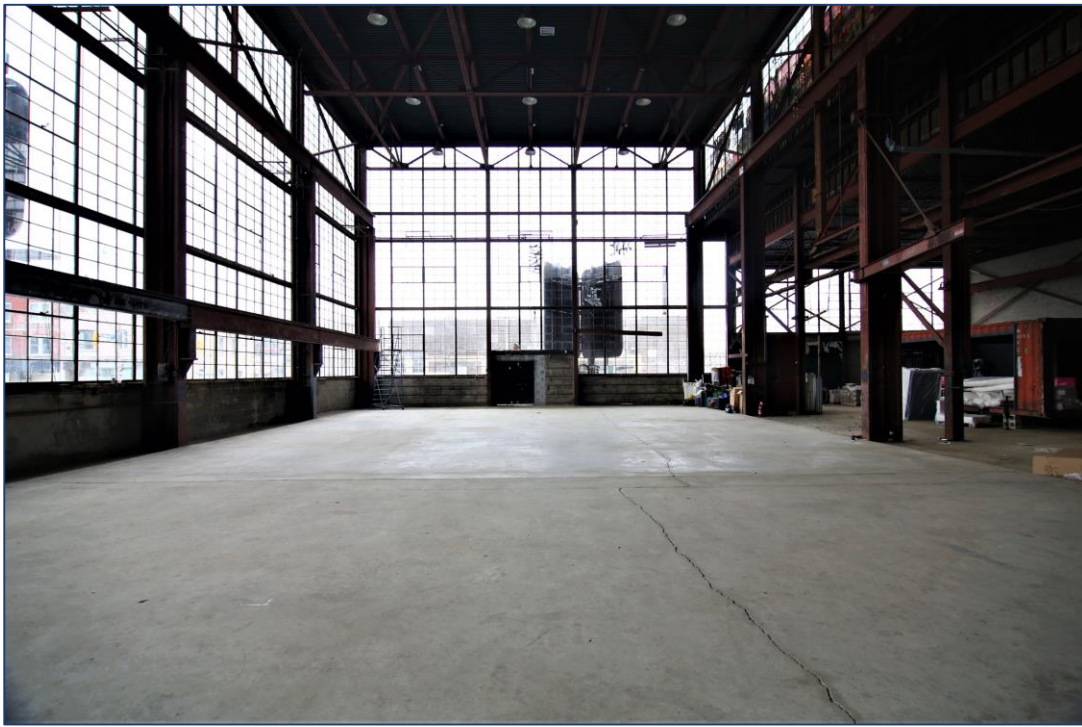


1st Floor



Lower Level



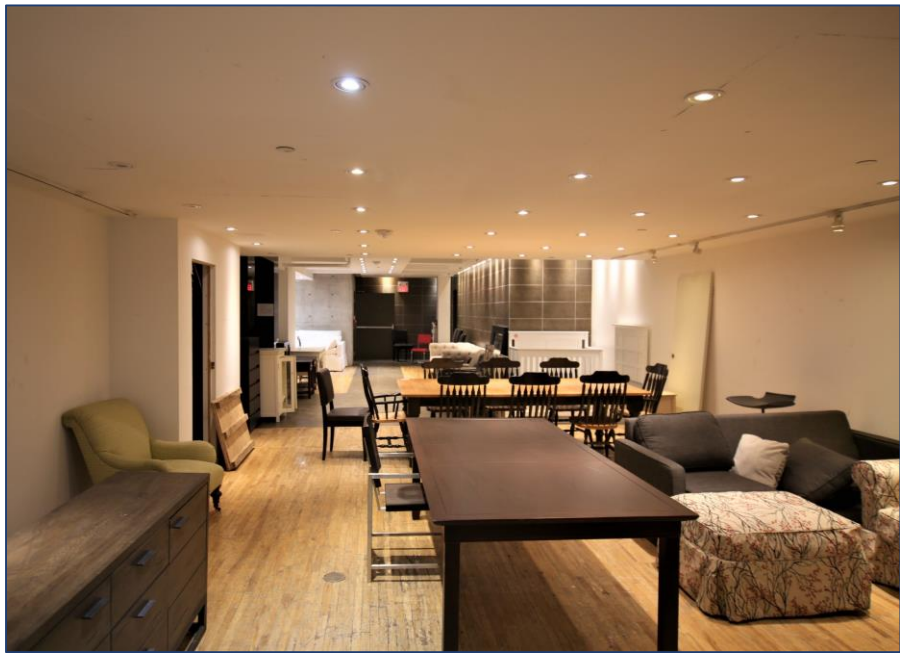


GLASS BOX UNIT PICTURES

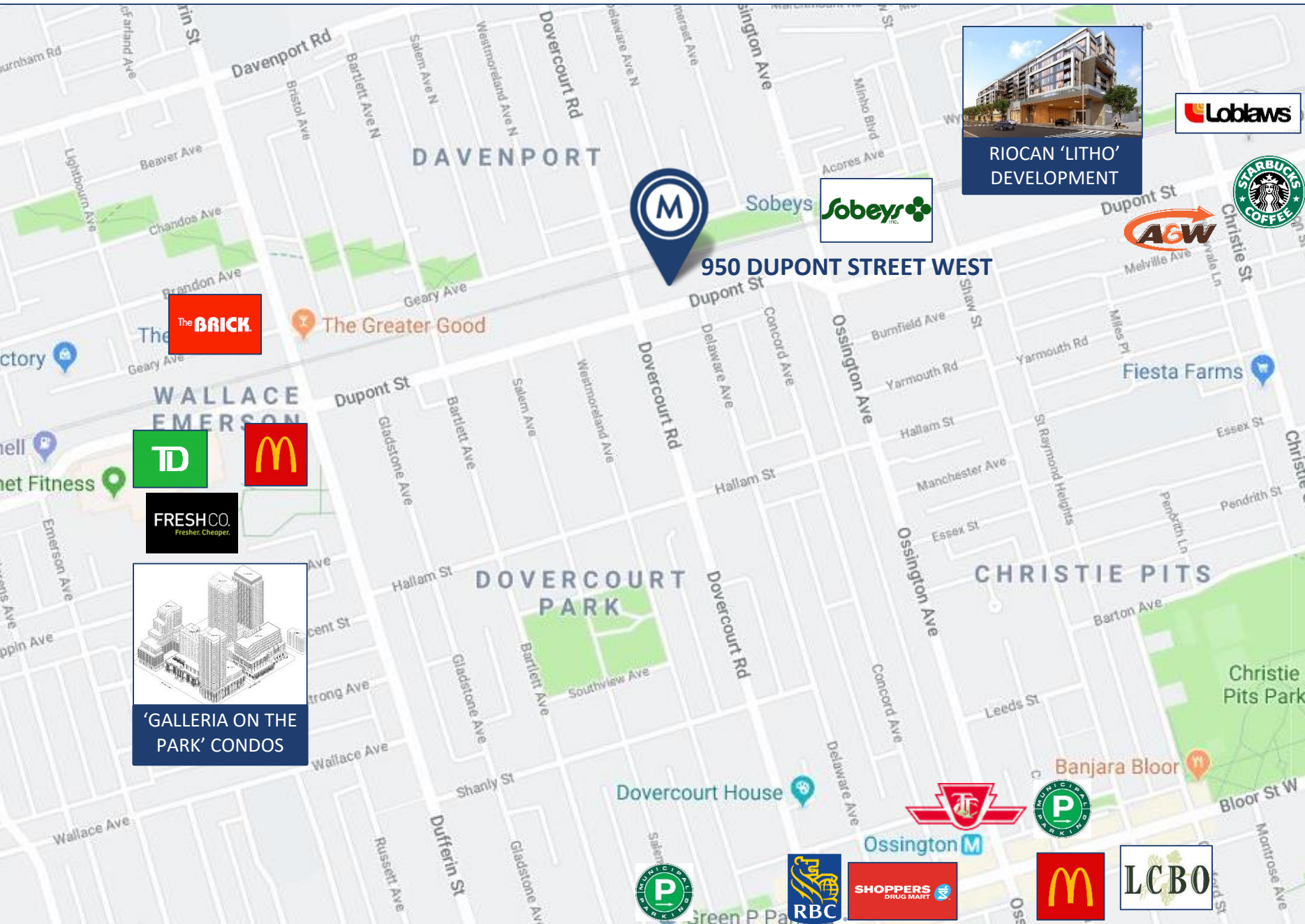
950 DUPONT STREET | FOR LEASE



BASEMENT UNIT PICTURES



950 DUPONT STREET | FOR LEASE



950 DUPONT STREET WEST



RIOCAN 'LITHO' DEVELOPMENT



The Greater Good



'GALLERIA ON THE PARK' CONDOS

AREA MAP

950 DUPONT STREET | FOR LEASE



METROPOLITAN COMMERCIAL

626 King St West, Suite 302
Toronto, ON
M5V 1M7

www.metcomrealty.com

CONTACT:

PAUL KOTYK*

Sales Representative
416.703.6621 Ext. 245
paul.kotyk@metcomrealty.com

TIM NOVAK*

Senior Vice President
416.703.6621 Ext. 246
Tim.novak@metcomrealty.com