

FOR LEASE | UNIQUE OFFICE SPACE

# 950 DUPONT STREET

TORONTO | ON



METROPOLITAN  
COMMERCIAL



METROPOLITAN  
COMMERCIAL  
**FOR  
LEASE**  
metcomrealty.com  
416.703.6621  
PAUL KOTYK  
TIM NOWAK

CANVAS



## DETAILS

---

**Location** North Side of Dupont Street, just West of Ossington Avenue [Click Here for Map](#)

<b>Building Details</b>	<u>Unit</u>	<u>Size</u>
	Glass Box Unit	6,500 SF
	Basement	2,600 SF

\*Note – All measurements are approximate and will be confirmed prior to offering

**Term** 3 - 5 Years

**Possession** 60 to 90 Days

**Rental Rate** \$35.00 PSF/YR Semi-Gross + Hydro

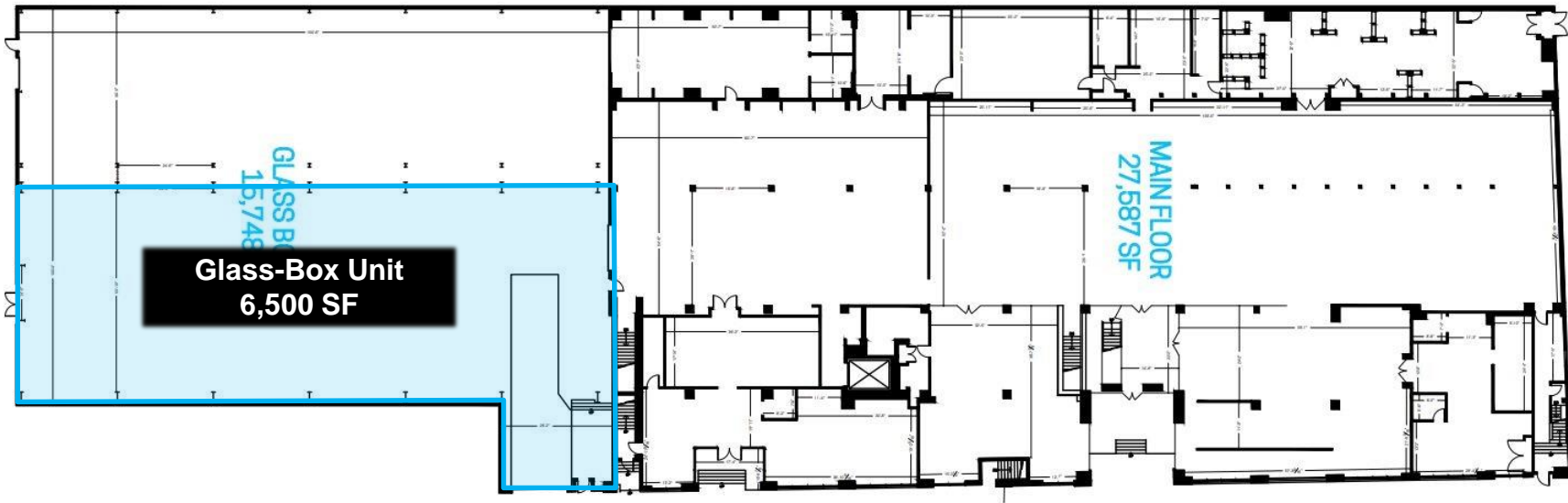
## FEATURES

---

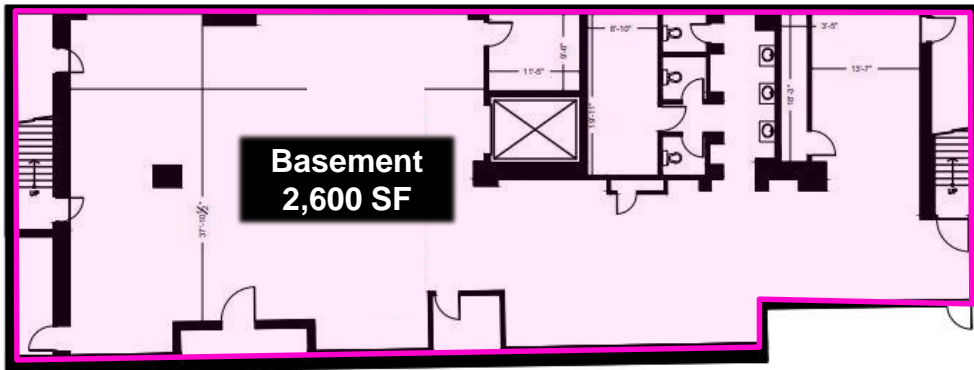
- Prestigious glass box unique space
- 1 Parking Spot per 1,500 SF leased.
- Sun Drenched Office Space with Soaring 40' Ceilings
- 10 Minute Walk from Dovercourt TTC Subway Station

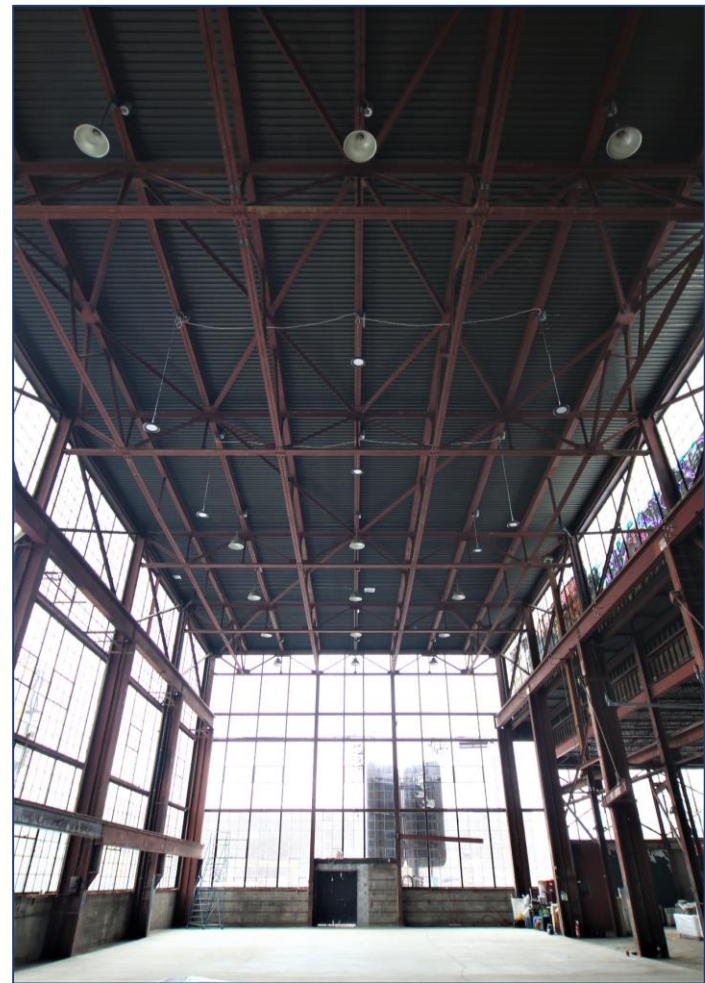
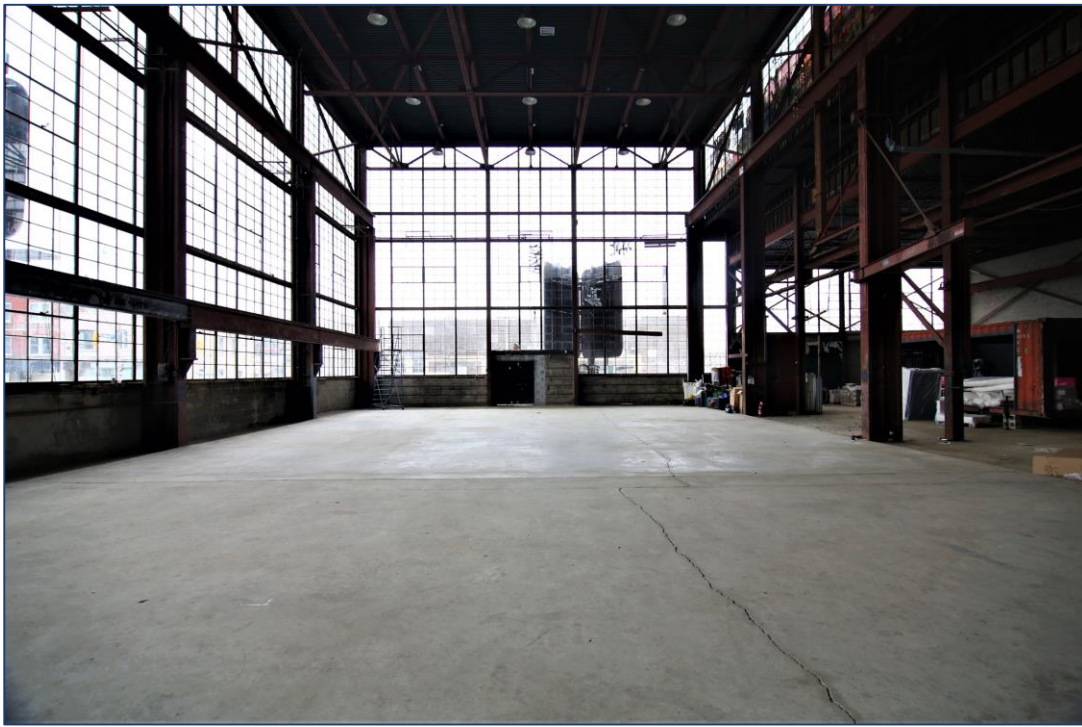


1<sup>st</sup> Floor



Lower Level



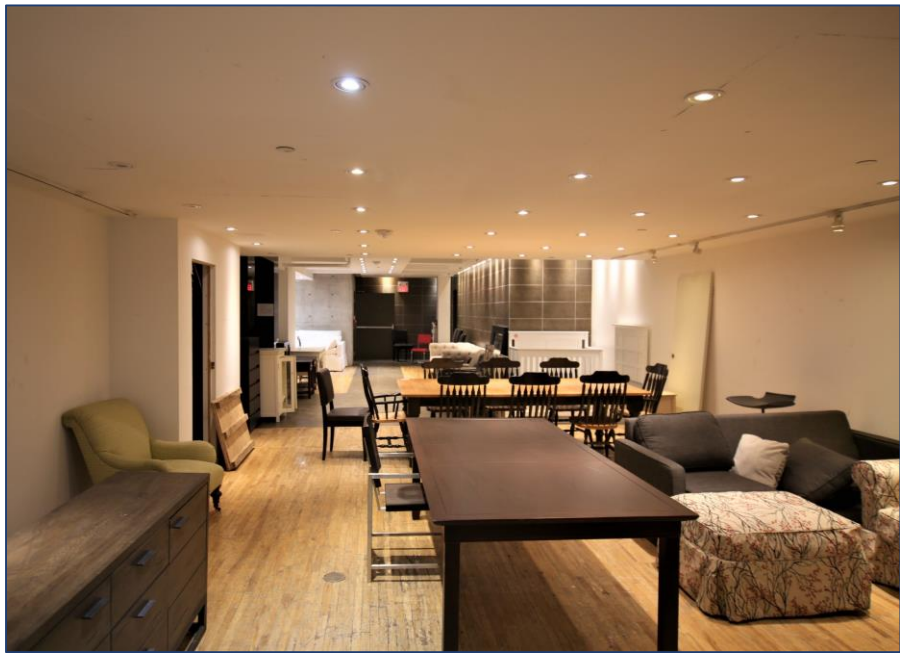


GLASS BOX UNIT PICTURES

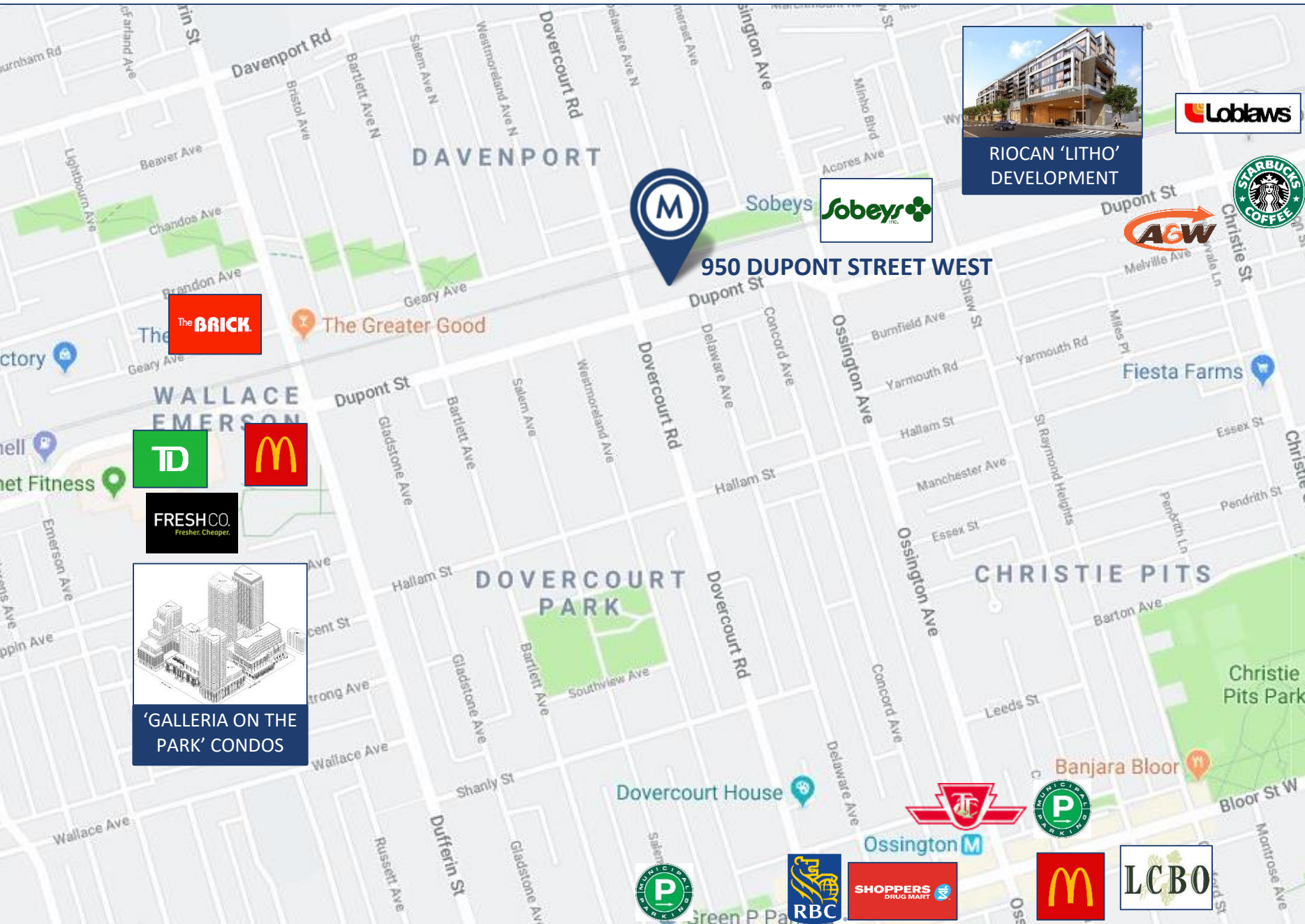
950 DUPONT STREET | FOR LEASE



BASEMENT UNIT PICTURES



950 DUPONT STREET | FOR LEASE



950 DUPONT STREET WEST



RIOCAN 'LITHO' DEVELOPMENT



The Greater Good



'GALLERIA ON THE PARK' CONDOS

AREA MAP

950 DUPONT STREET | FOR LEASE



# METROPOLITAN COMMERCIAL

626 King St West, Suite 302  
Toronto, ON  
M5V 1M7

[www.metcomrealty.com](http://www.metcomrealty.com)

## CONTACT:

### **PAUL KOTYK\***

Sales Representative  
416.703.6621 Ext. 245  
[paul.kotyk@metcomrealty.com](mailto:paul.kotyk@metcomrealty.com)

### **TIM NOVAK\***

Senior Vice President  
416.703.6621 Ext. 246  
[Tim.novak@metcomrealty.com](mailto:Tim.novak@metcomrealty.com)