

FOR LEASE | UNIQUE OFFICE SPACE

950 DUPONT STREET

TORONTO | ON



METROPOLITAN
COMMERCIAL



METROPOLITAN
COMMERCIAL
**FOR
LEASE**
metcomrealty.com
416.703.6621
PAUL KOTYK
TIM NOWAK

CANVAS



DETAILS

Location North Side of Dupont Street, just East of Dovercourt Road [Click Here for Map](#)

Building Details

<u>Unit</u>	<u>Size</u>
Unit A	13,000 SF (Can be divisible to 3,500 SF)
Unit C	3,000 SF
Unit F	3,500 SF
Unit J	10,000 SF (Can be divisible to 3,000 SF)

*Note – All measurements are approximate and will be confirmed prior to offering

Term 3 - 5 Years

Possession 60 to 90 Days

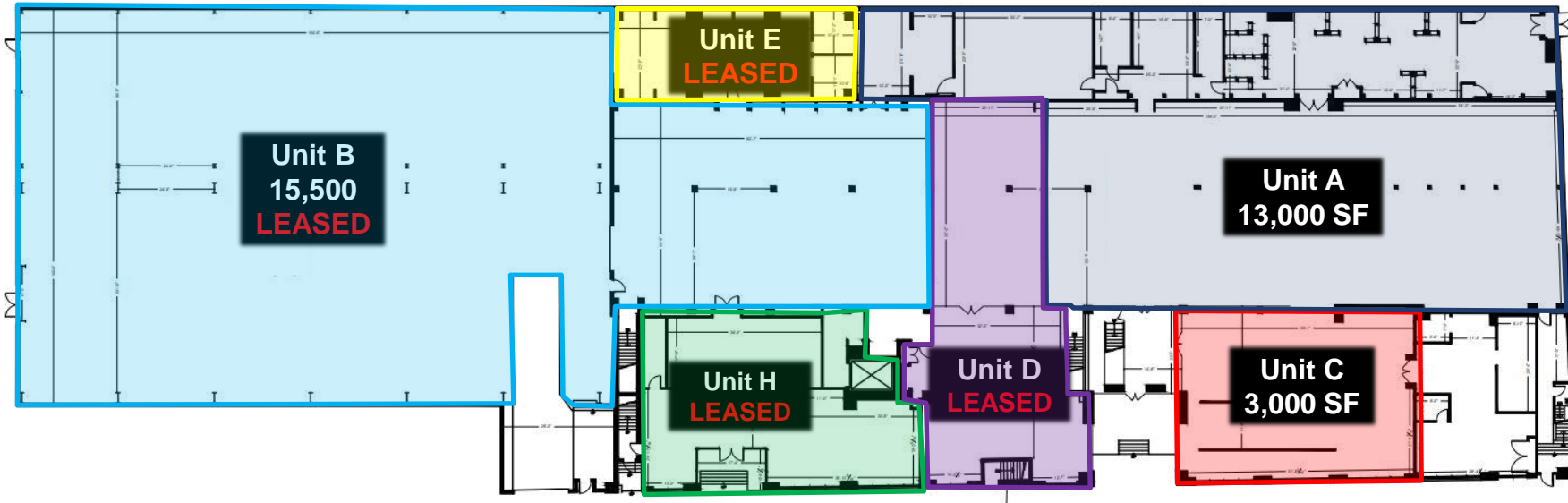
Rental Rate \$33.00 PSF/YR Semi-Gross + Hydro

FEATURES

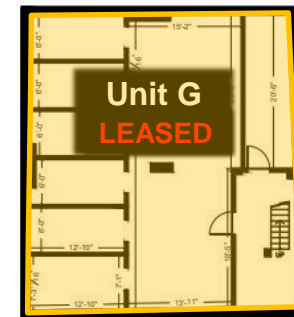
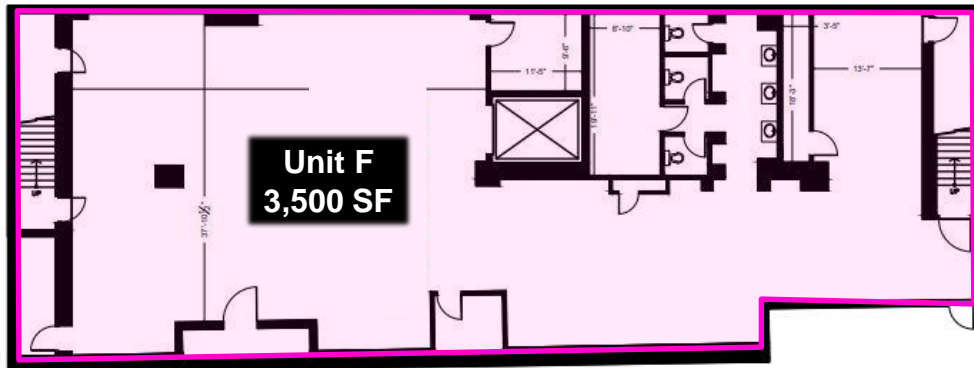
- Prestige Brick and Beam Building
- 1 Parking Spot per 1,500 SF leased.
- Sun Drenched Office Space with Soaring (10' – 18') Ceilings
- Variety of Office Sizes and Types Available to Accommodate a Variety of Business Needs
- 10 Minute Walk from Dovercourt TTC Subway Station



1st Floor



Lower Level

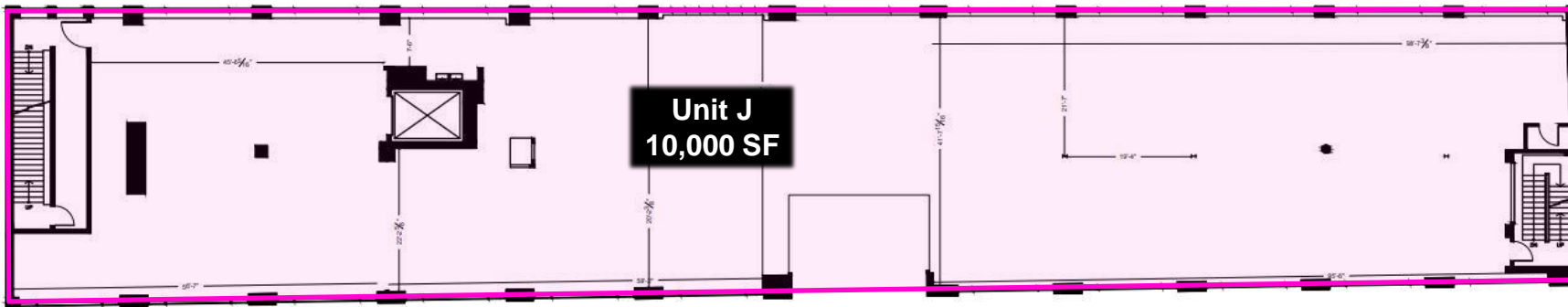


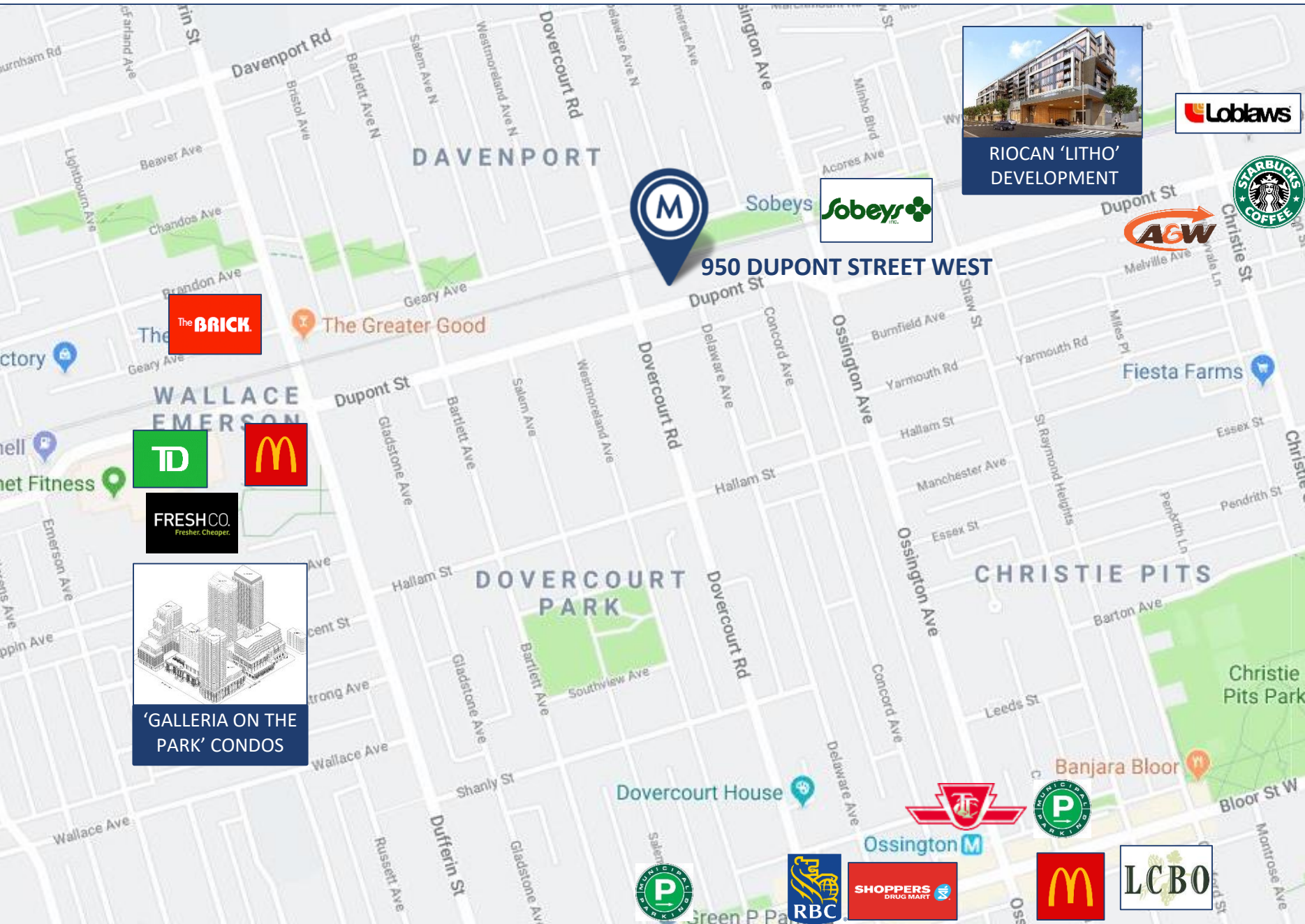


2nd Floor



3rd Floor





950 DUPONT STREET WEST



RIOCAN 'LITHO' DEVELOPMENT



The Greater Good



'GALLERIA ON THE PARK' CONDOS

AREA MAP

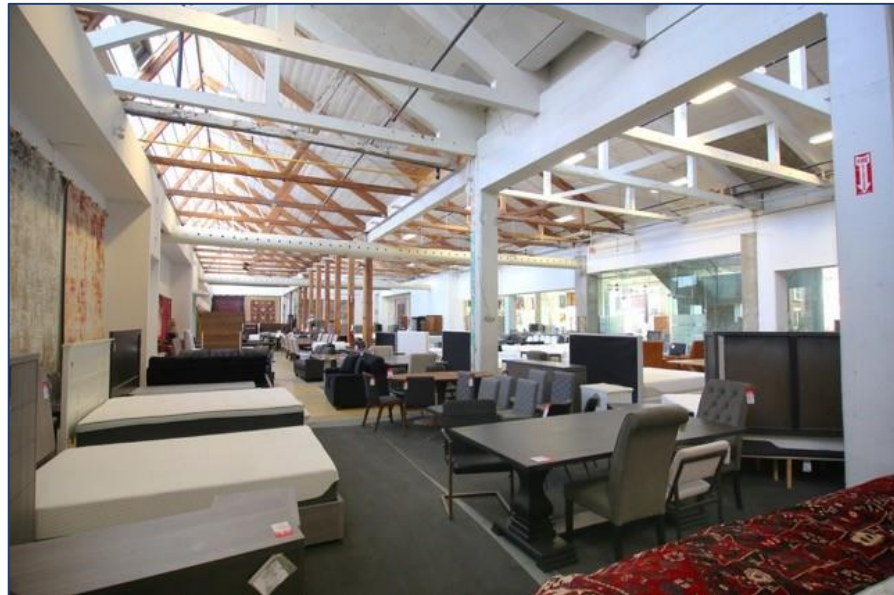
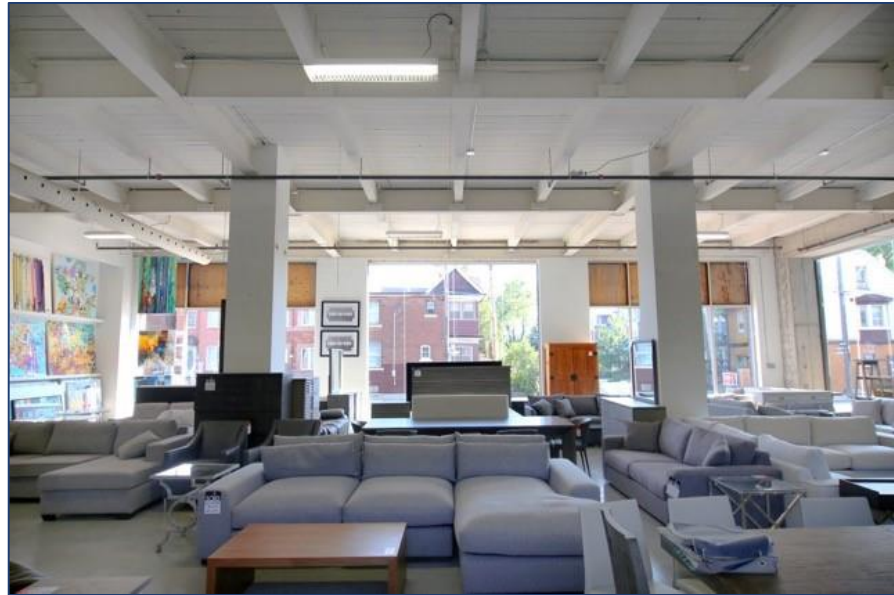
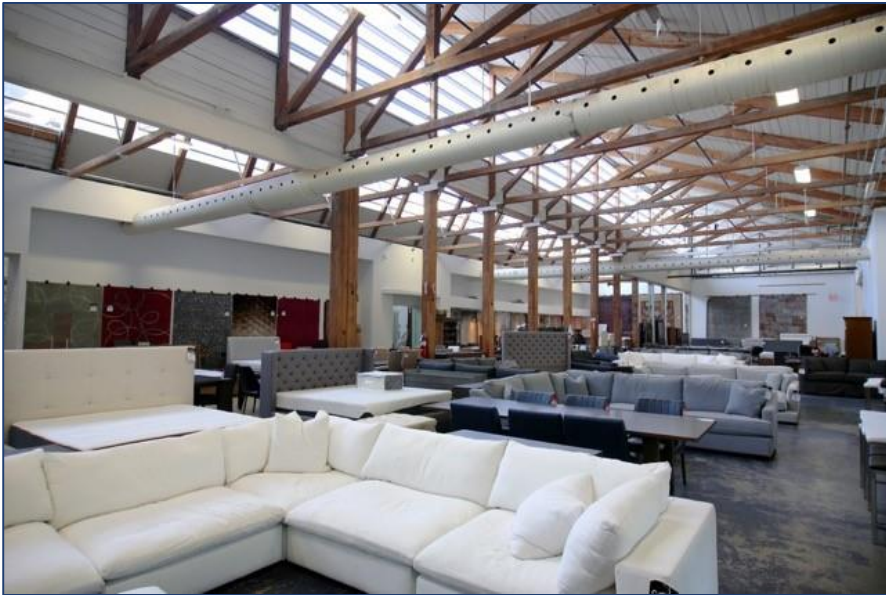
950 DUPONT STREET | FOR LEASE



PHOTOS



PHOTOS





METROPOLITAN COMMERCIAL

626 King St West, Suite 302
Toronto, ON
M5V 1M7

www.metcomrealty.com

CONTACT:

PAUL KOTYK*

Sales Representative
416.703.6621 Ext. 245
paul.kotyk@metcomrealty.com

TIM NOVAK*

Senior Vice President
416.703.6621 Ext. 246
Tim.novak@metcomrealty.com