

FOR LEASE | RETAIL SPACE

2678 YONGE STREET

TORONTO | ON



METROPOLITAN
COMMERCIAL



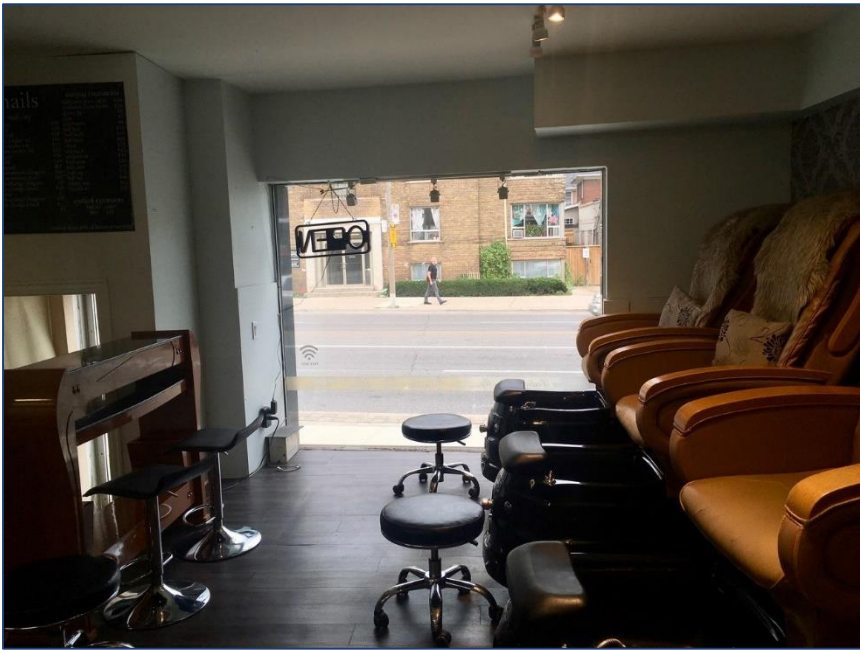
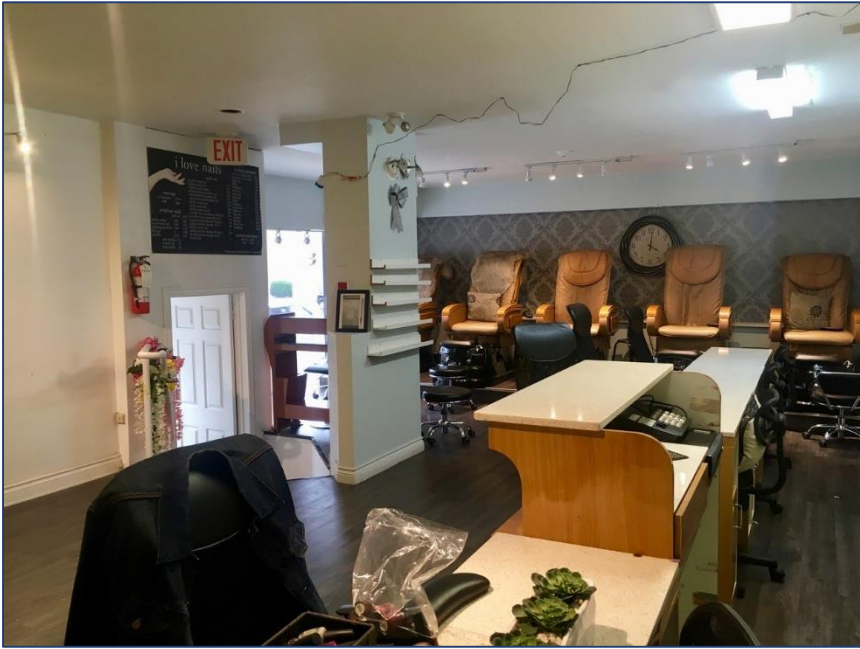
DETAILS

Location	Located at Yonge Street and Blythwood Road Click Here for Map
Building Details	837 SF
Semi-Gross Rental Rate	\$2,900 Per Month
Additional Rent	Utilities
Possession	Immediate
Term	2-5 Years

FEATURES

- Large open space suitable for a nail salon or other beauty services, as well as virtually all types of retail.
- Unit has two private offices or storage rooms and one private bathroom.
- Frontage on Yonge Street providing a lot of street access and exposure.
- Located in the sought after Midtown Toronto location.



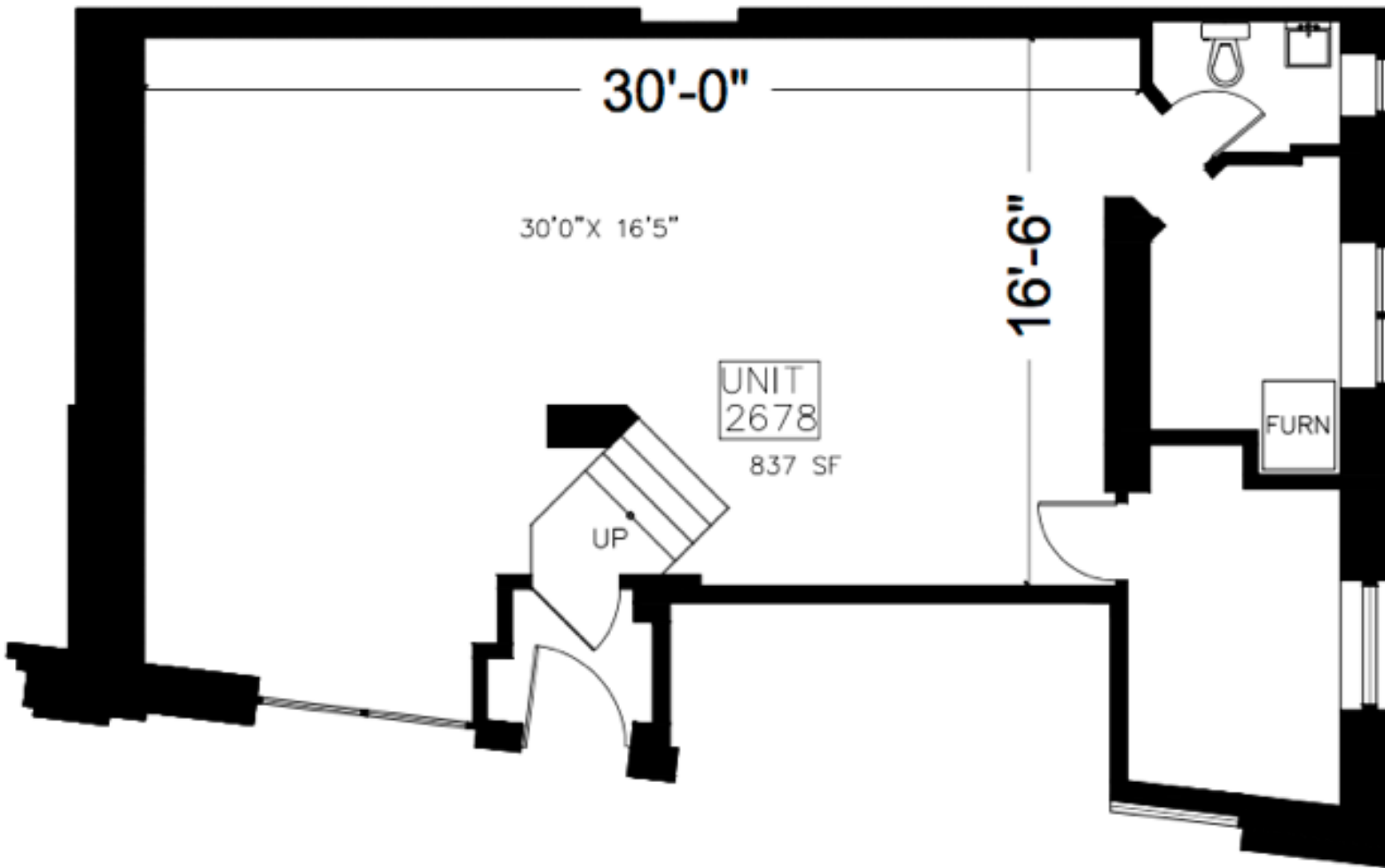


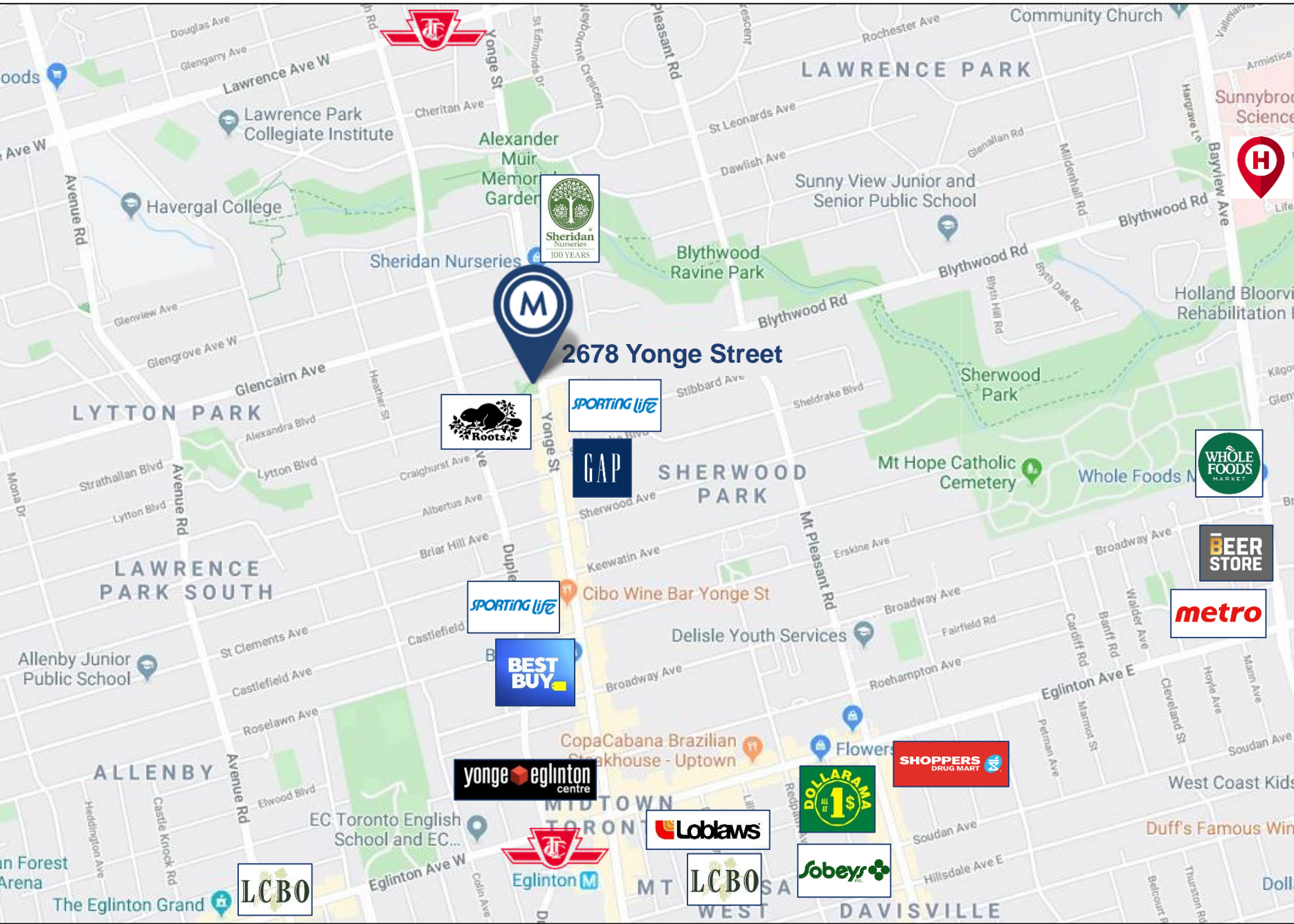
PROPERTY PHOTOS

2678 YONGE STREET | FOR LEASE



FLOOR PLANS





AREA MAP

2678 YONGE STREET | FOR LEASE



METROPOLITAN COMMERCIAL

626 King St West, Suite 302
Toronto, ON
M5V 1M7

www.metcomrealty.com

CONTACT:

KEVIN TUTTLE*
Sales Representative
416.703.6621 ext. 227
kevin.tuttle@metcomrealty.com