

FOR LEASE | RETAIL SPACE

88A GEARY AVENUE

TORONTO | ON



METROPOLITAN
COMMERCIAL



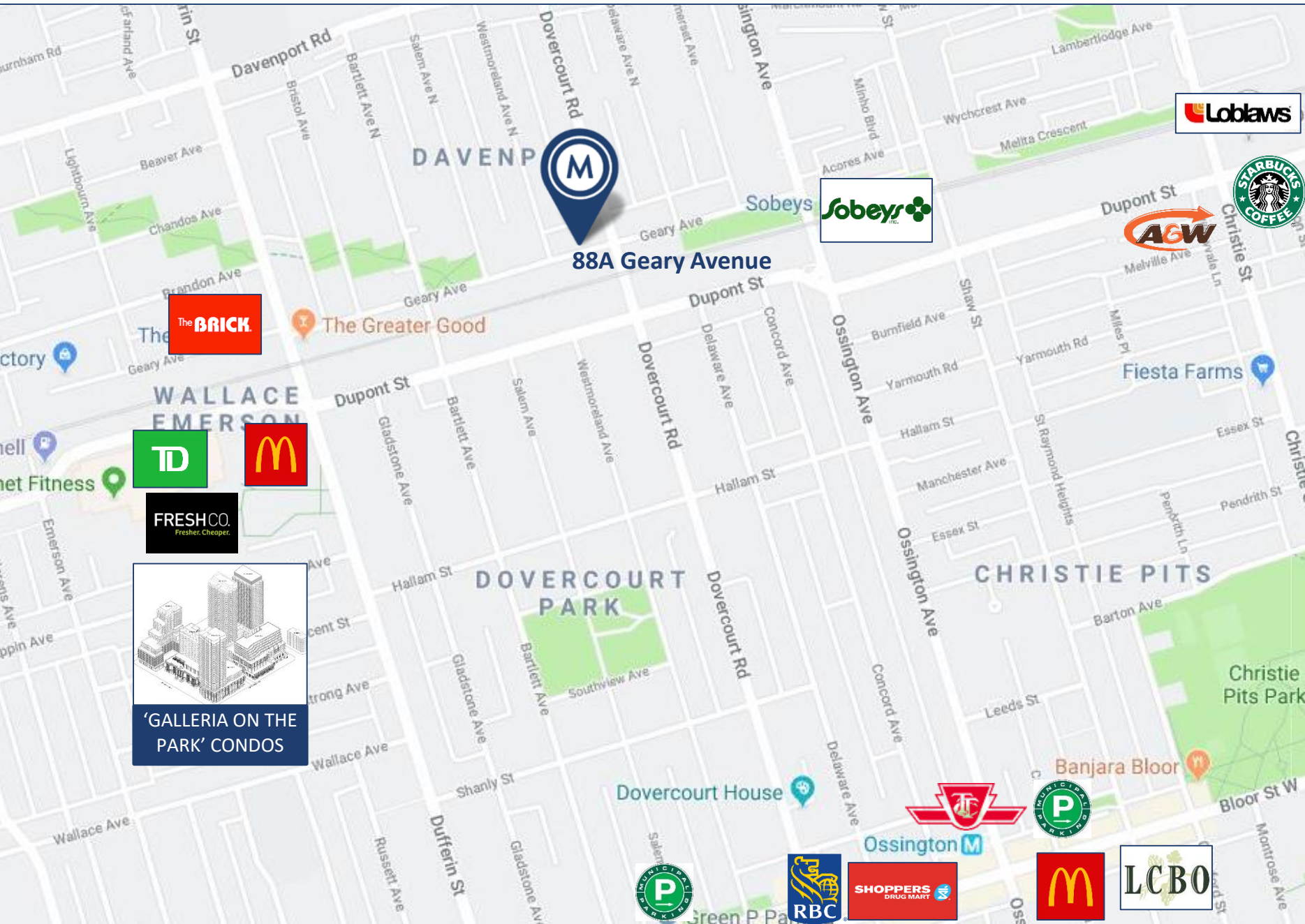


DETAILS

Location	Located between Dovercourt and Westmoreland Ave N. Click Here for Map
Details	1,100 SF
Net Rental Rate	\$25.00 PSF/YR (\$2,292.00 /Month)
Additional Rent (TMI)	\$13.00 PSF/YR (\$1,191.00 /Month)
Term	3-5 years
Possession	May 1 st , 2020

FEATURES

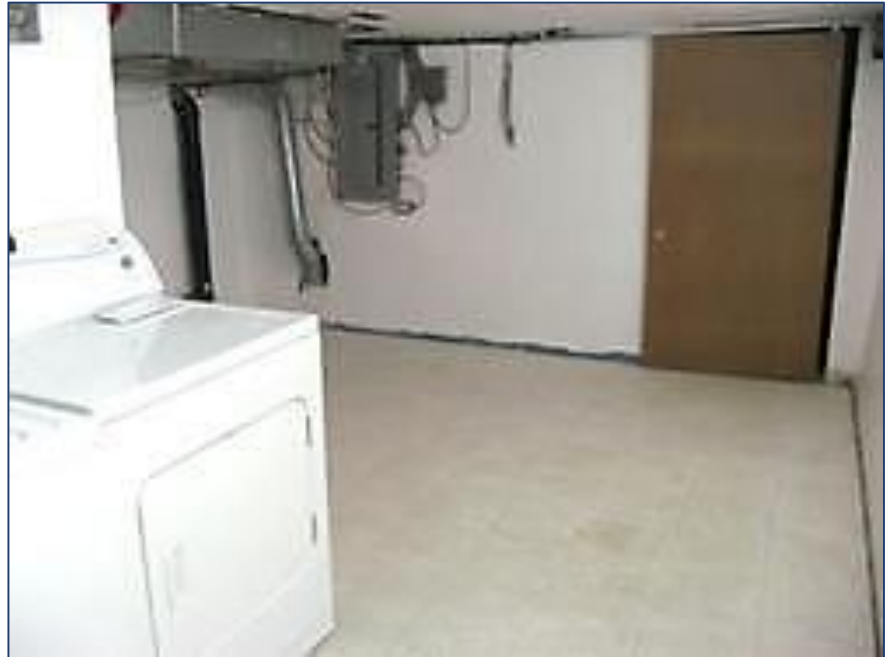
- Perfect for tech, retail, gallery, office, professional service, or creative business.
- Beautifully renovated split-level space
- Small area in basement available for storage to tenant.
- Only a 10 minute bus ride away from Ossington TTC Subway Station



AREA MAP



PICTURES





METROPOLITAN COMMERCIAL

626 King St West, Suite 302
Toronto, ON
M5V 1M7

www.metcomrealty.com

CONTACT:

CLAIRE BLICKER*
Vice President
416.703.6621 ext. 232
claire.blicker@metcomrealty.com