

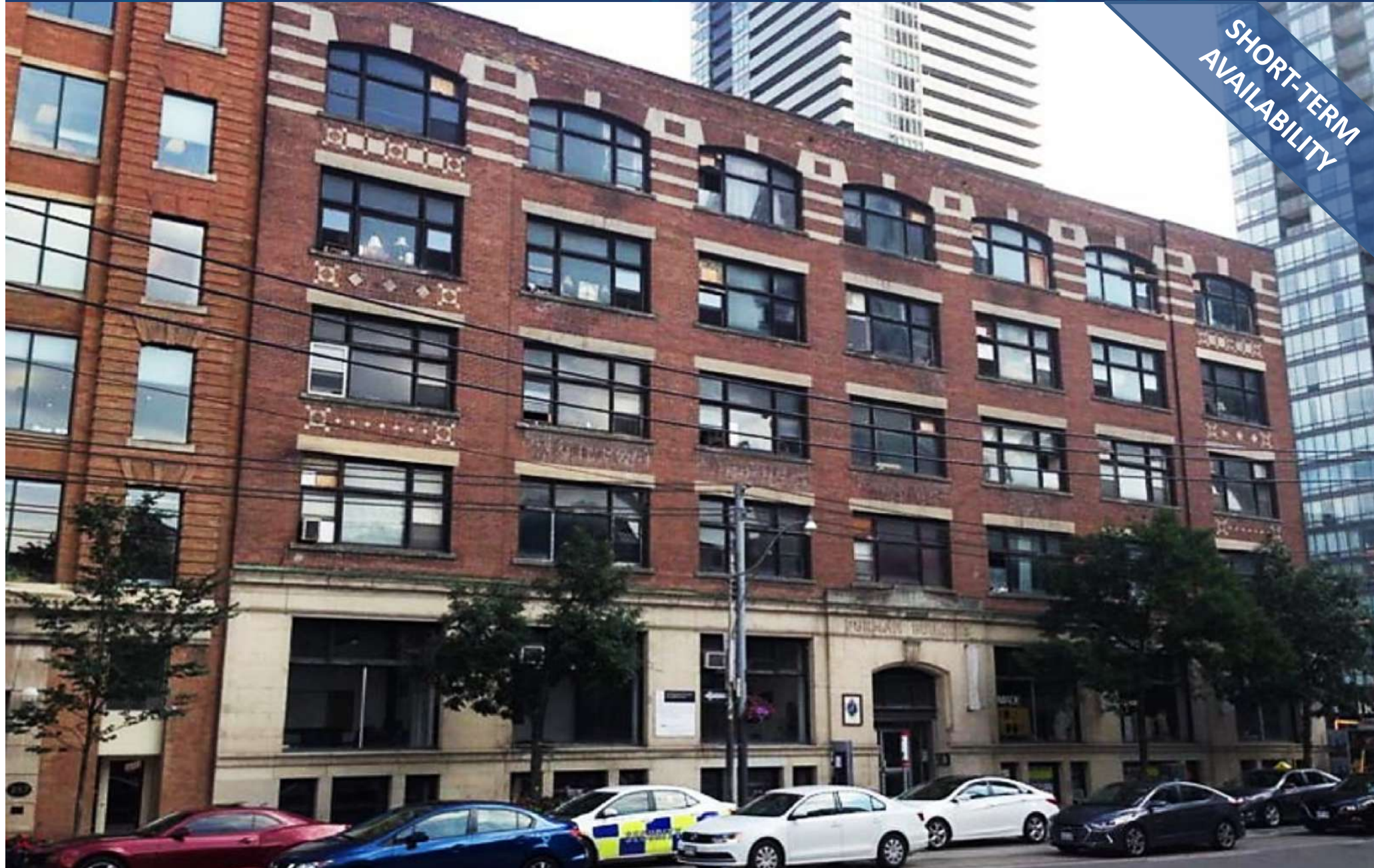
FOR LEASE | SHORT-TERM BRICK AND BEAM OFFICE SPACE
263 ADELAIDE STREET WEST

TORONTO | ON



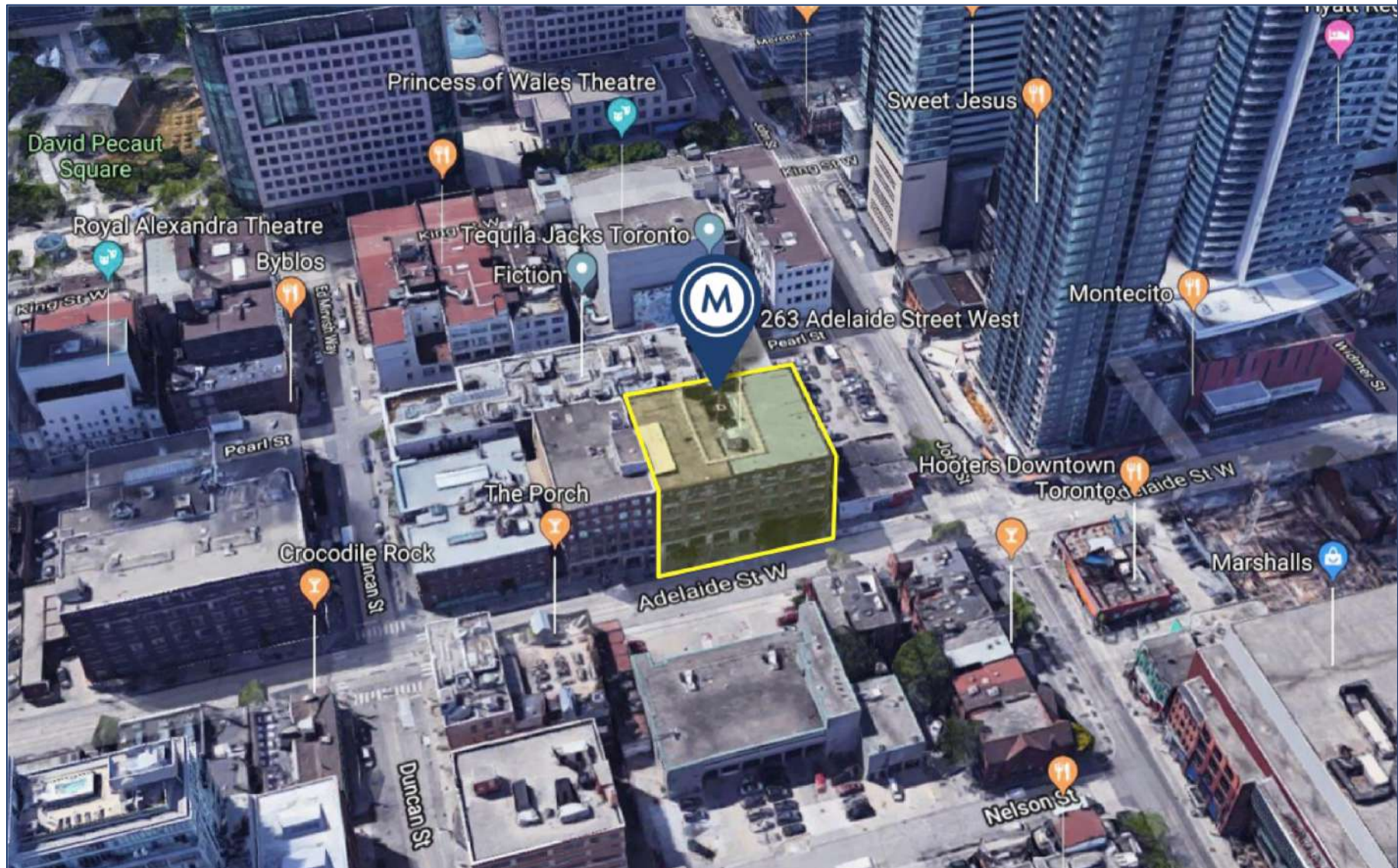
METROPOLITAN
COMMERCIAL

SHORT-TERM
AVAILABILITY





AREA MAP



263 ADELAIDE STREET WEST | FOR LEASE

DETAILS

Location SE Block of John St and Adelaide St W, in the heart of the Entertainment District.
[Click Here for Map](#)

Building Details	<u>Unit #</u>	<u>Size (SF)</u>	<u>All-in Monthly Rental Rate</u>
	Suite 100 E	5,805 SF	\$10,000
	Suite 340	821 SF	\$1,999
	Suite 401	5,367 SF	\$9,750
	Suite 406	1,412 SF	\$2,750

Term Please contact listing agents

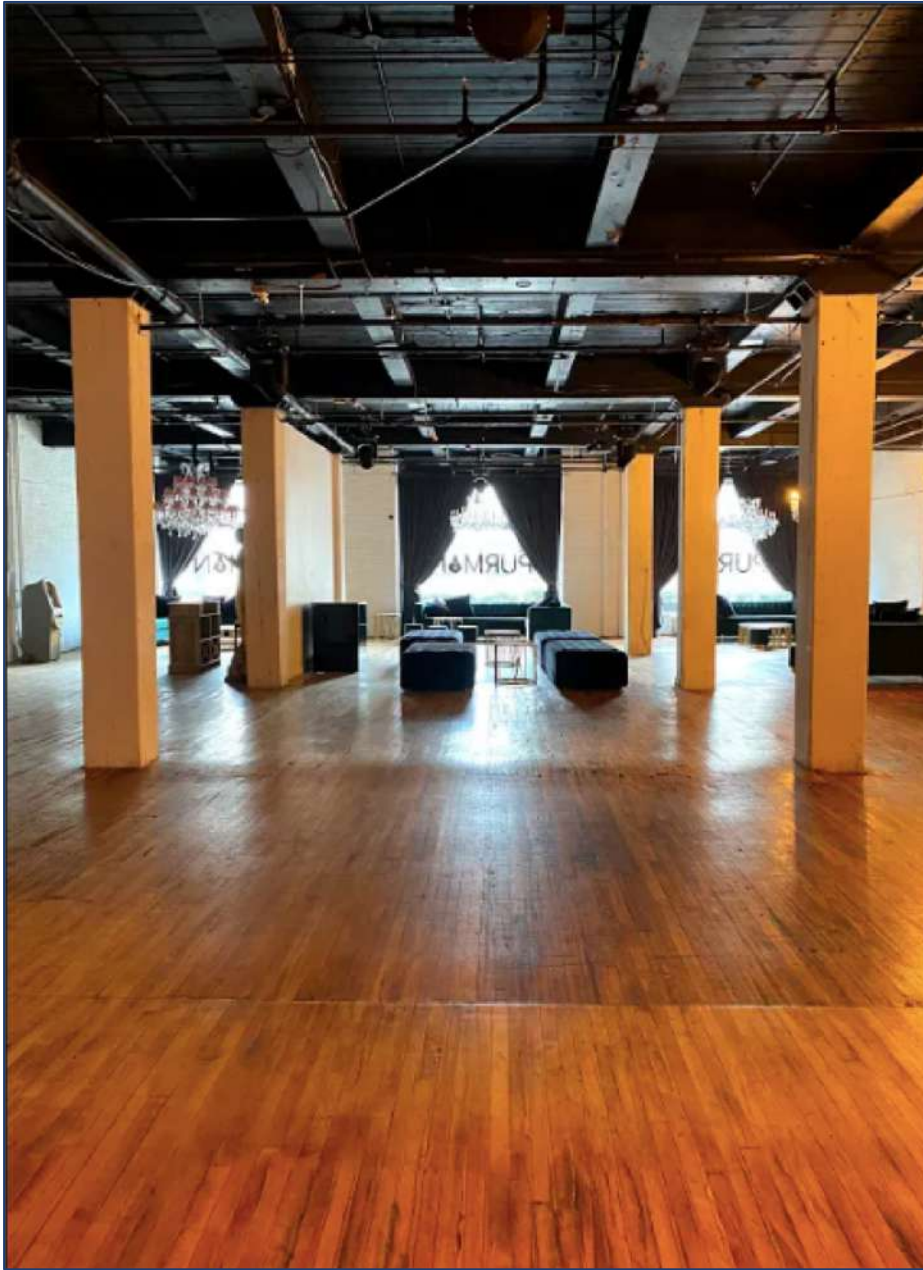
Possession Immediate

FEATURES

- Classic brick & beam building
- High wood ceilings
- Hardwood flooring and exposed brick walls
- Inclusive of T.M.I. & utilities
- In-suite janitorial & HST in addition to monthly rental rate



UNIT 100 E

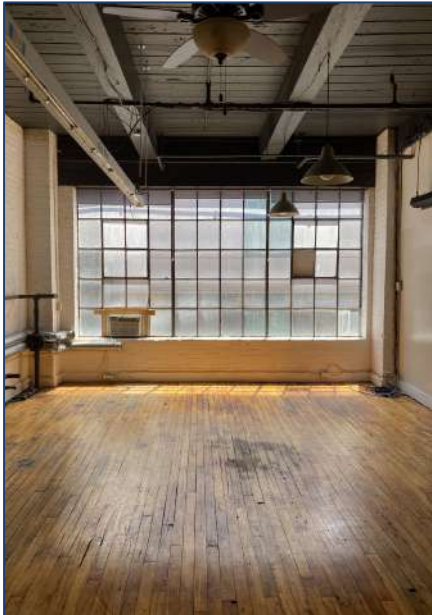
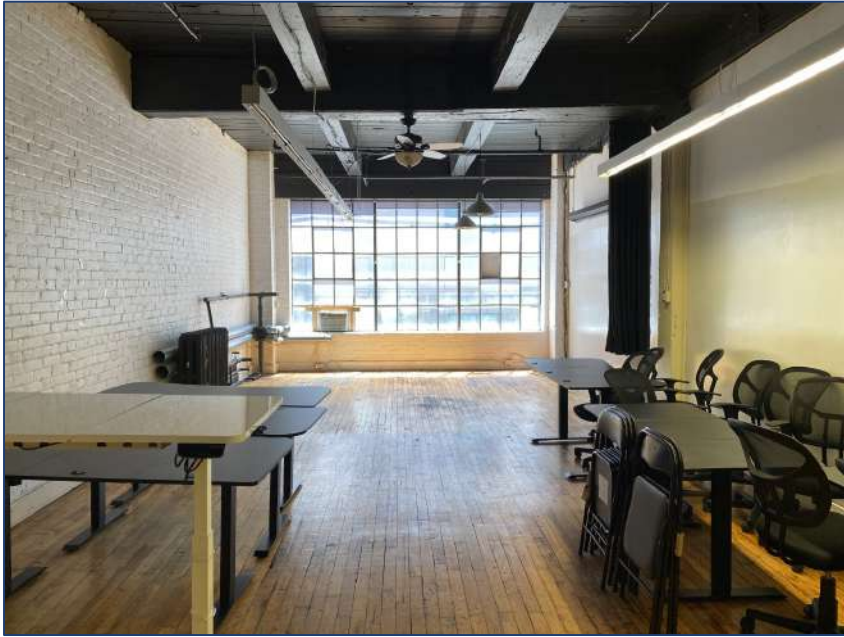


263 ADELAIDE STREET WEST | FOR LEASE



PHOTOS

UNIT 340



PHOTOS

263 ADELAIDE STREET WEST | FOR LEASE

UNIT 401



263 ADELAIDE STREET WEST | FOR LEASE



PHOTOS

UNIT 406

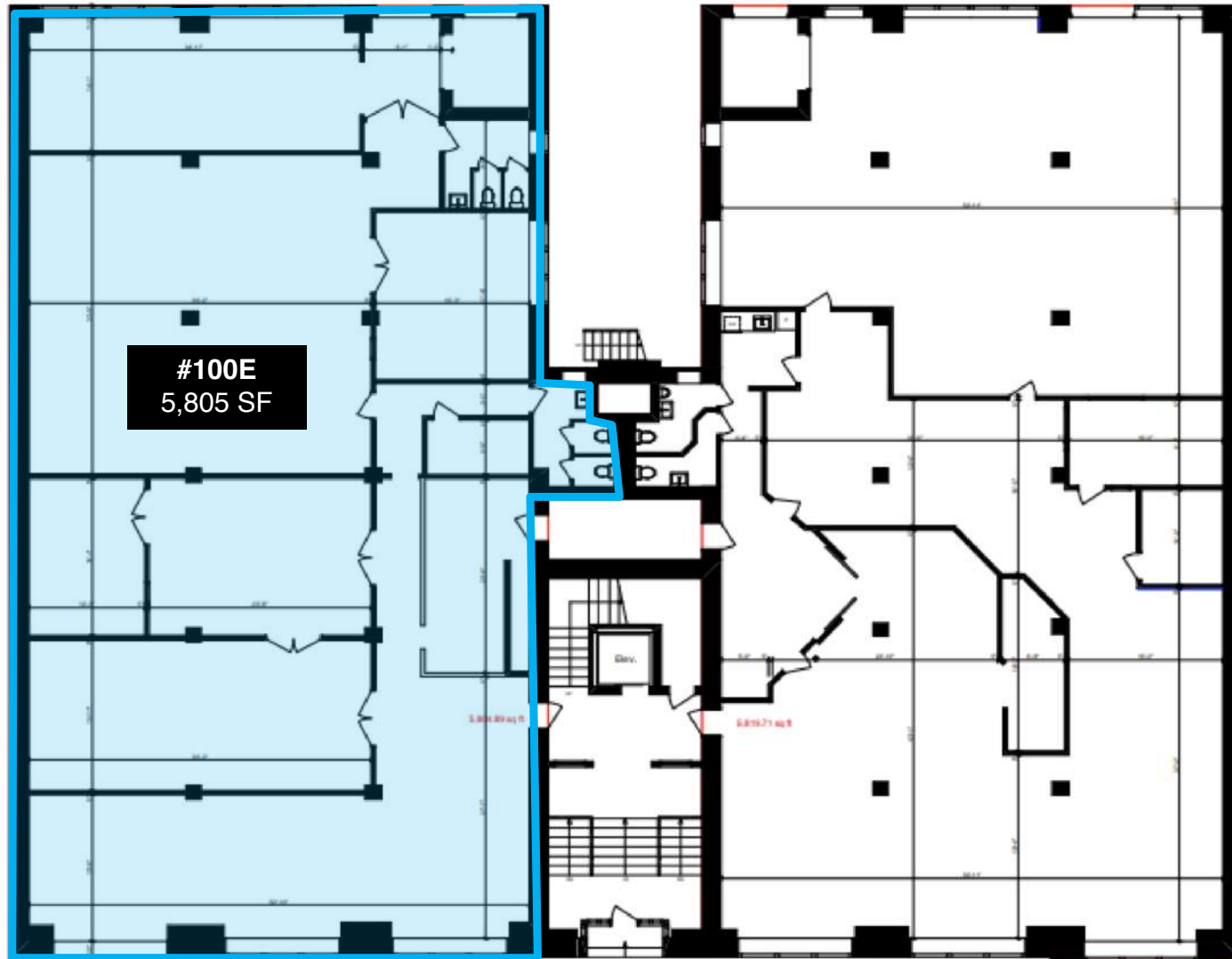


263 ADELAIDE STREET WEST | FOR LEASE

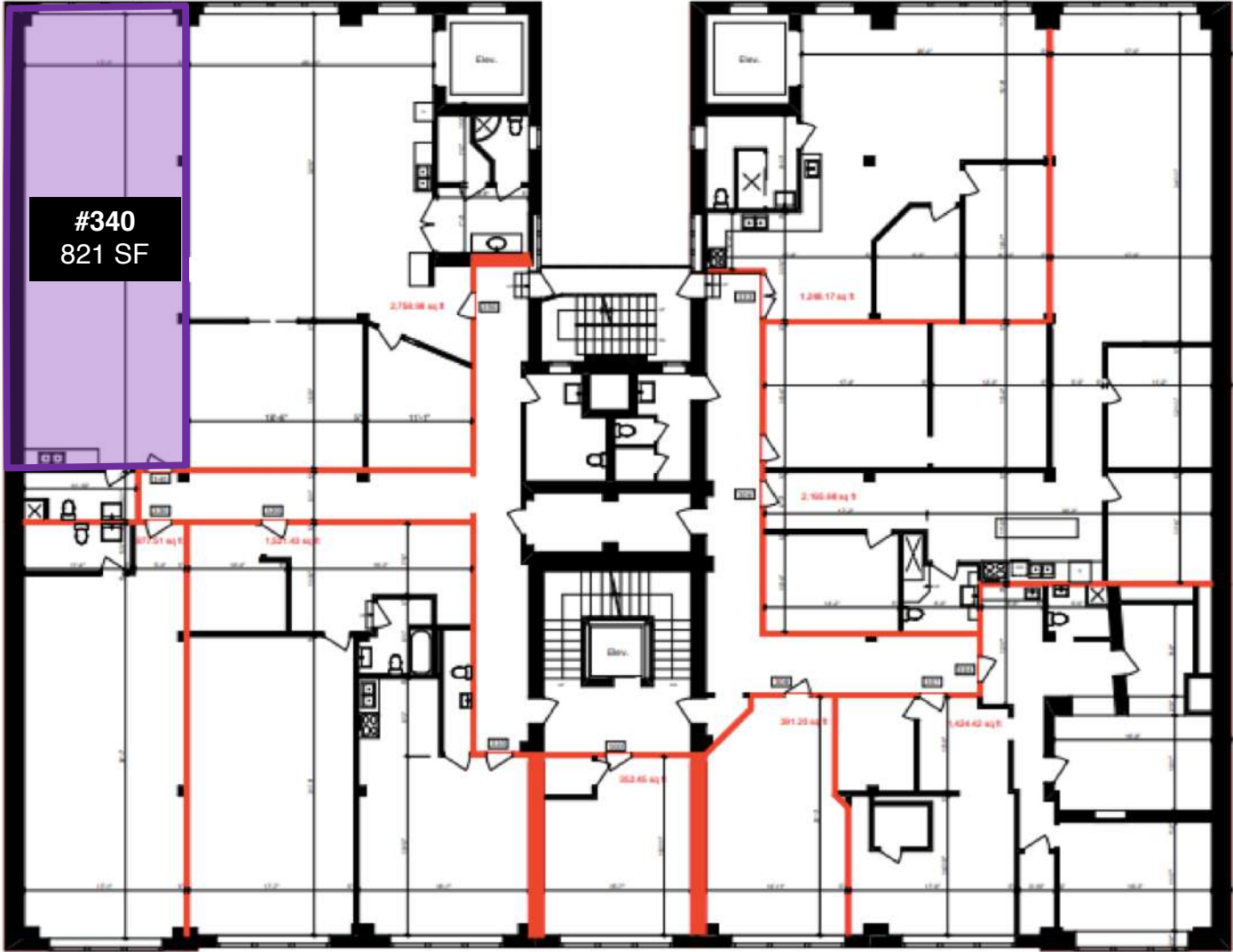


PHOTOS

FIRST FLOOR



THIRD FLOOR



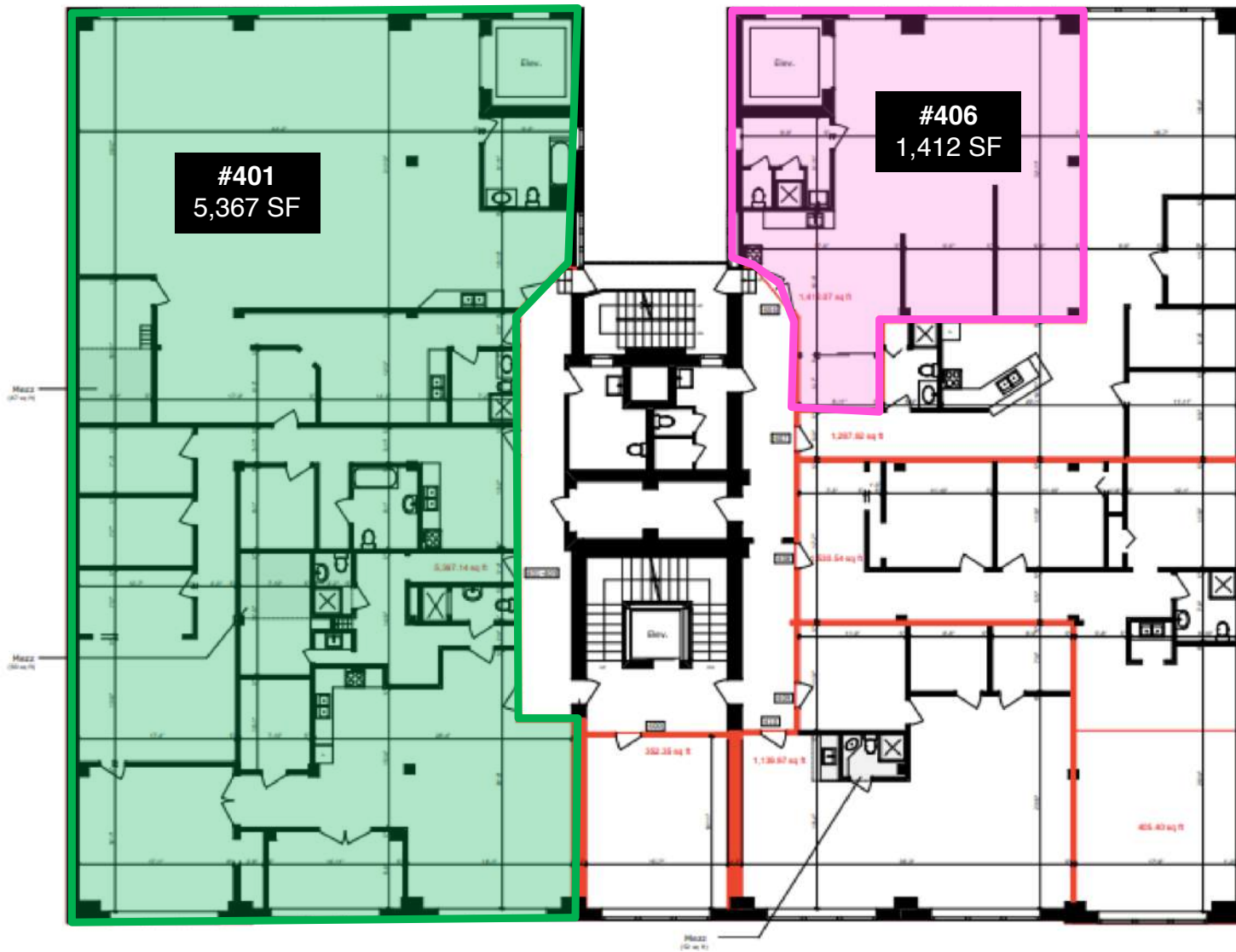
263 ADELAIDE STREET WEST | FOR LEASE



FLOOR PLAN



FOURTH FLOOR



263 ADELAIDE STREET WEST | FOR LEASE



METROPOLITAN COMMERCIAL

626 King St West, Suite 302
Toronto, ON
M5V 1M7

www.metcomrealty.com

CONTACT:

Urban Commercial Advisory Group

Amir Nourbakhsh*	416.703.6621 x252	amir@metcomrealty.com
Jesse Roth*	416.703.6621 x243	jesse.roth@metcomrealty.com