

FOR LEASE | FLEX SPACE

# 915 DUPONT STREET

TORONTO, ON



METROPOLITAN  
COMMERCIAL





## DETAILS

---

**Location** Dupont Street, West of Ossington Avenue [Click Here for Map](#)

<b>Unit Details</b>	<b><u>Unit</u></b>	<b><u>Square Footage*</u></b>
	204	702 SF
	205	1,170 SF
	208	-

\*Sizes are approximate. All units will be measured prior to offering

**Semi-Gross Rental Rate** \$35.00 PSF/YR + Utilities

**Term** 3-10 Years

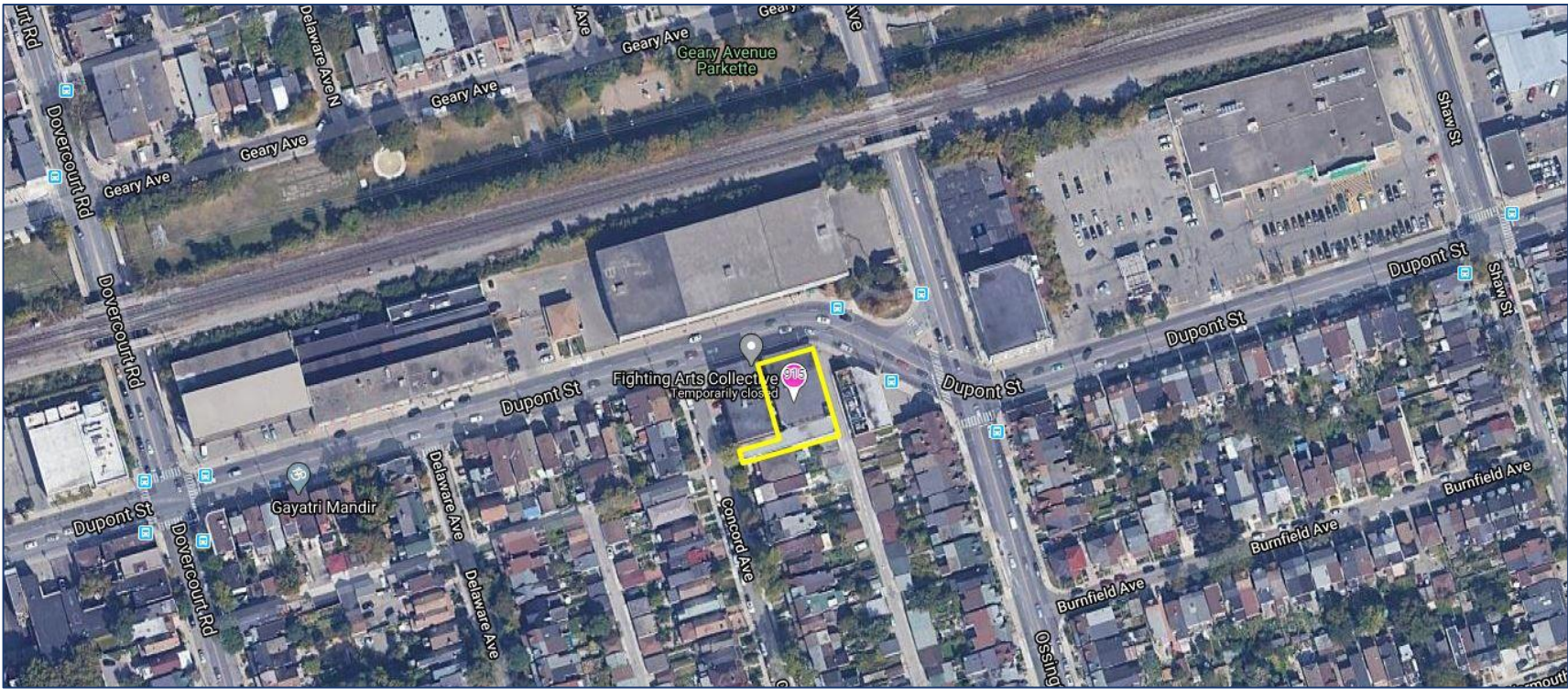
**Possession** Immediate

## PROPERTY FEATURES

---

- A variety of office/studio spaces at the Dupont St. and Ossington Ave. intersection
- Classic 1930's industrial two-storey building
- Parking available (Limited)
- 12' ceiling height
- TTC accessible via the 63 Ossington bus from Bloor Street West, (Ossington Subway Station)
- 3 minute walk to Sobeys, Faema Café and Loblaws



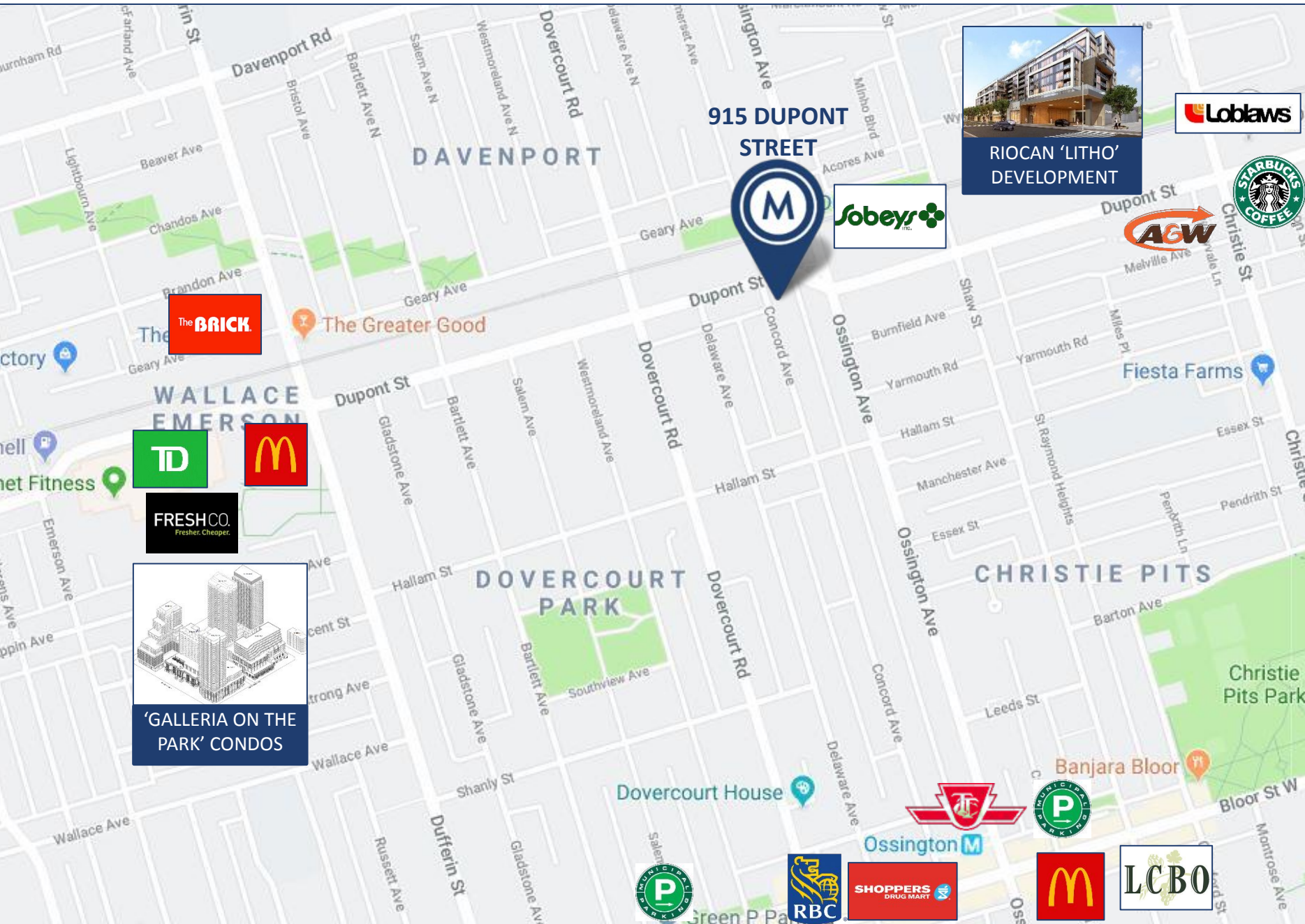


915 DUPONT STREET | FOR LEASE



BUILDING PROFILE/ AERIAL MAP





AREA MAP

915 DUPONT STREET | FOR LEASE





PHOTOS



915 DUPONT STREET | FOR LEASE



## Rendering of Potential Finish to Space

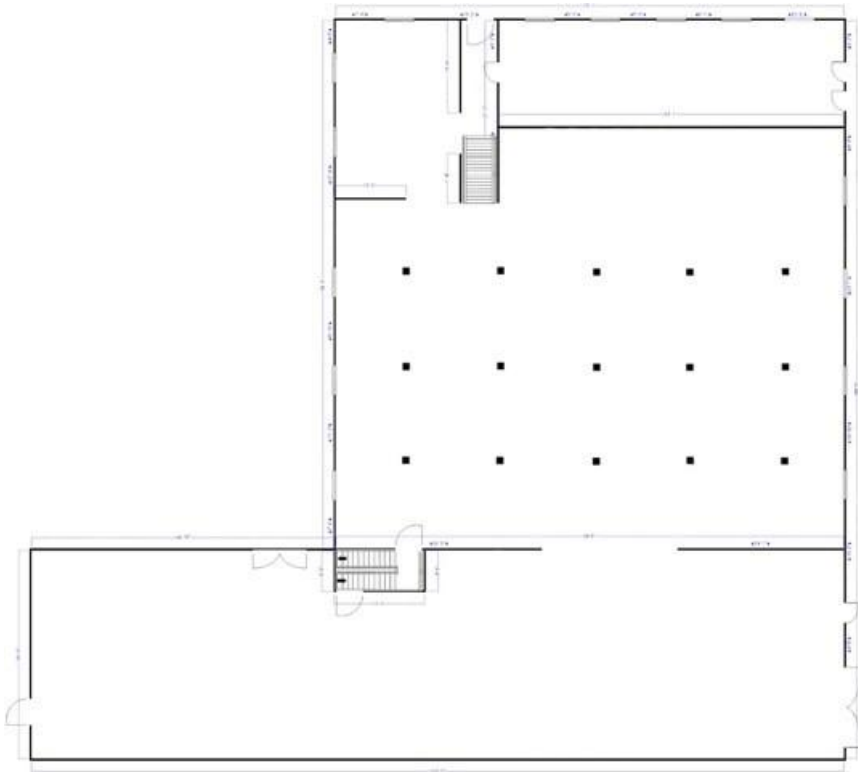


PHOTOS

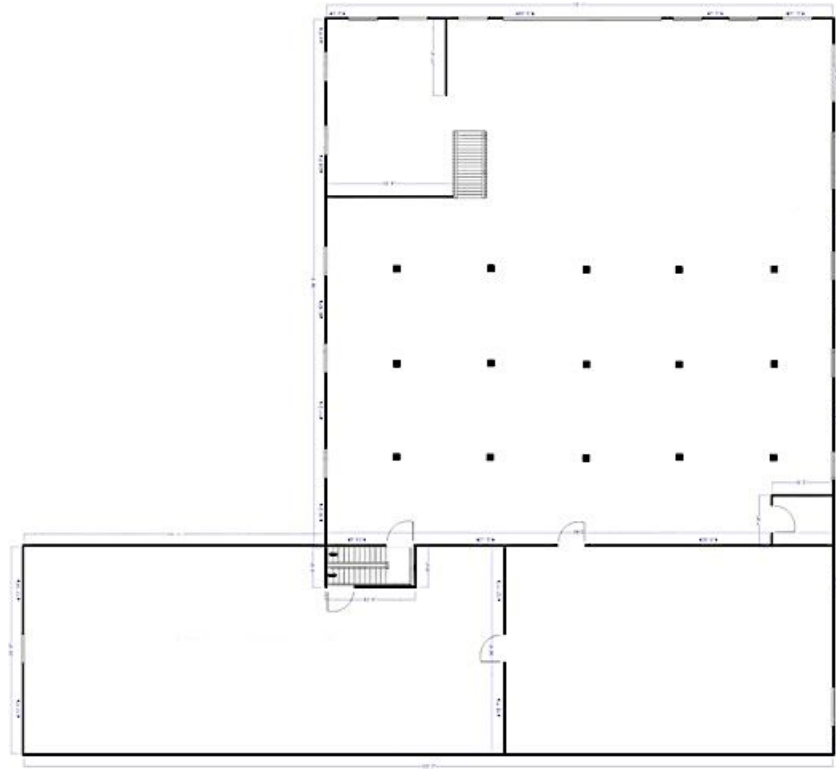


## Current Layout

### Floor 1



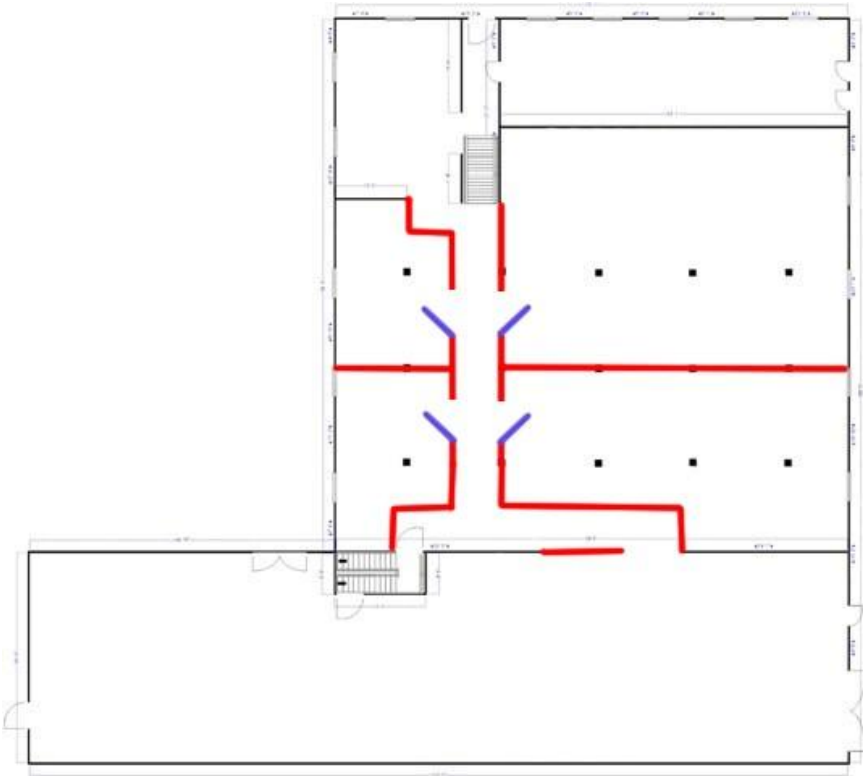
### Floor 2



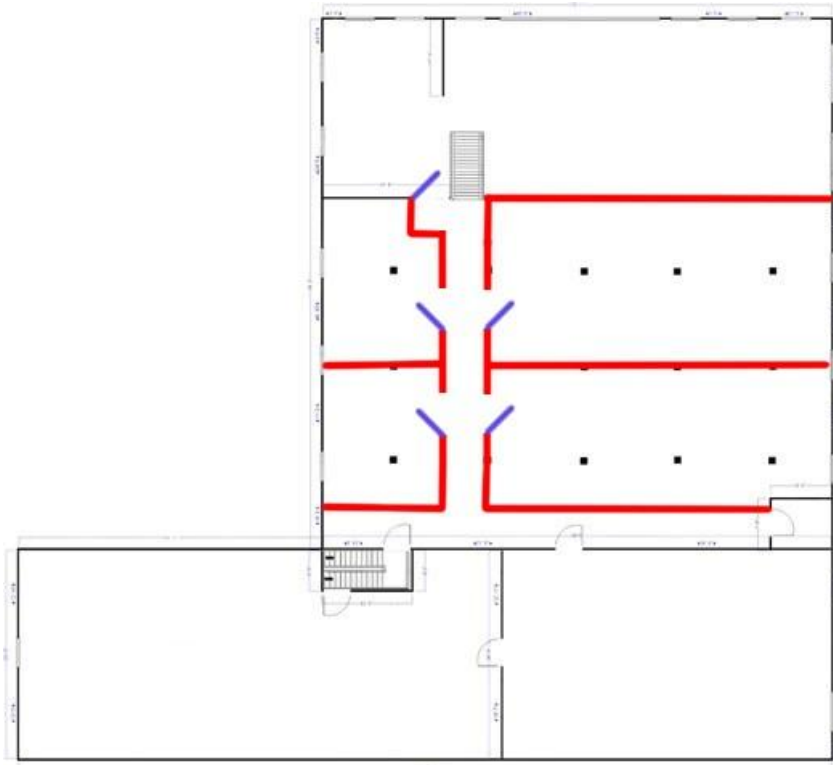
# Potential Suite Layouts



## Floor 1



## Floor 2



POTENTIAL FLOOR PLAN





# METROPOLITAN COMMERCIAL

626 King St West, Suite 302  
Toronto, ON  
M5V 1M7

[www.metcomrealty.com](http://www.metcomrealty.com)

## CONTACT:

**PAUL KOTYK\***  
Senior Associate  
416.703.6621 Ext. 245  
[paul.kotyk@metcomrealty.com](mailto:paul.kotyk@metcomrealty.com)

**TIM NOVAK\***  
Senior Vice President  
416.703.6621 Ext. 246  
[Tim.novak@metcomrealty.com](mailto:Tim.novak@metcomrealty.com)