

FOR LEASE | FLEX SPACE

# 915 DUPONT STREET

TORONTO, ON



METROPOLITAN  
COMMERCIAL





## DETAILS

---

### LOCATION

Dupont Street, West of Ossington Avenue [Click Here for Map](#)

### BUILDING DETAILS

<u>UNIT</u>	<u>SQUARE FOOTAGE*</u>	<u>MONTHLY RENTAL RATE</u>
104	702 SF	\$1,950 + Hydro + HST
105	895 SF	\$2,450 + Hydro + HST

\*Sizes are approximate. All units will be measured prior to offering

### TERM

3-10 Years

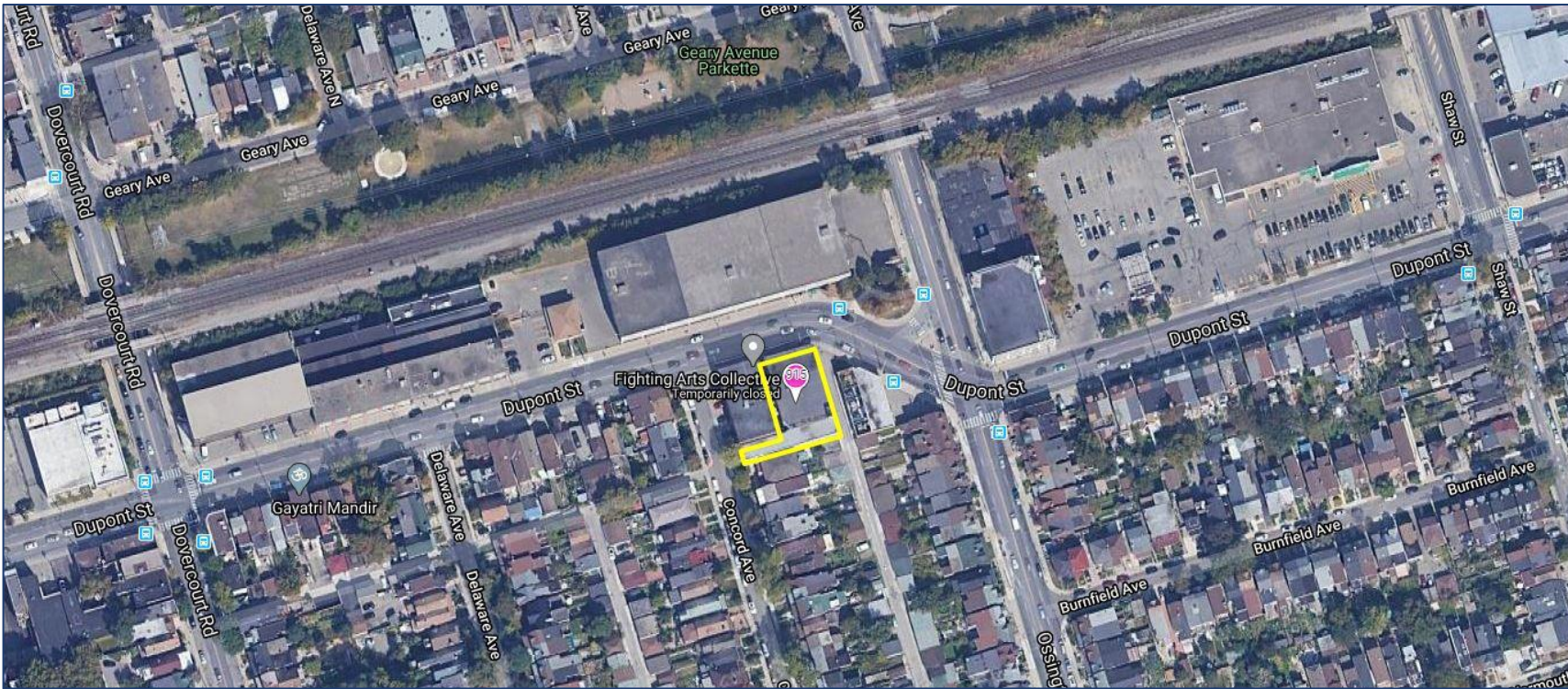
### POSSESSION

Immediate

## PROPERTY FEATURES

---

- A variety of office/studio spaces at the Dupont St. and Ossington Ave. intersection
- Classic 1930's industrial two-storey building
- Parking available (Limited)
- 12' ceiling height
- TTC accessible via the 63 Ossington bus from Bloor Street West, (Ossington Subway Station)
- 3 minute walk to Sobeys, Faema Café and Loblaws



915 DUPONT STREET | FOR LEASE



BUILDING PROFILE/ AERIAL MAP



RIOCAN 'LITHO' DEVELOPMENT



DUPONT ST

OSSINGTON AVE



'GALLERIA ON THE PARK' CONDOS

AREA MAP



PHOTOS



**915 DUPONT STREET | FOR LEASE**



## Rendering of Potential Finish to Space

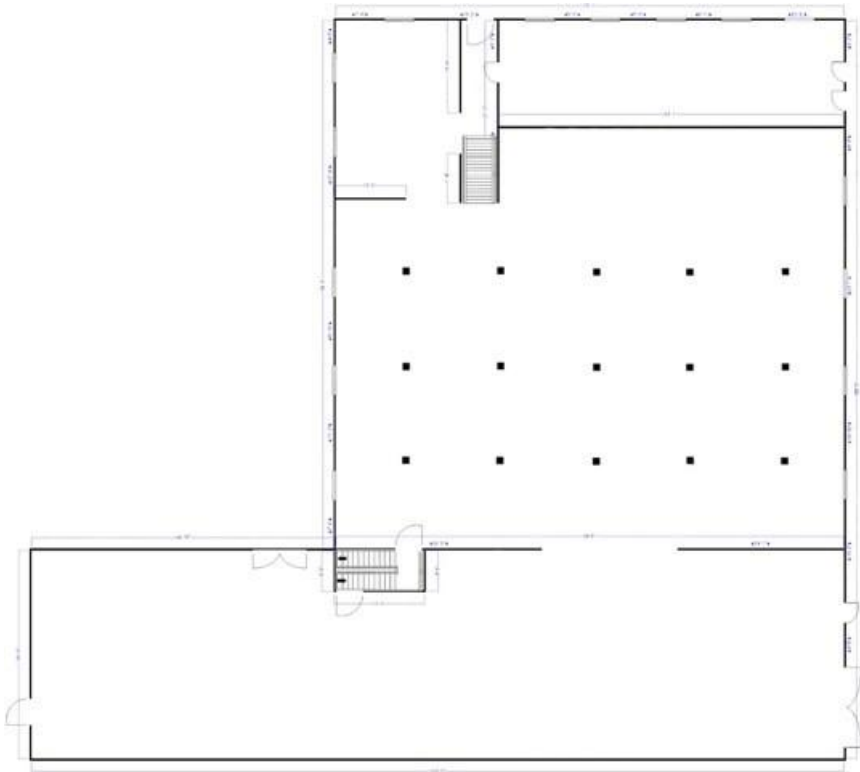


PHOTOS

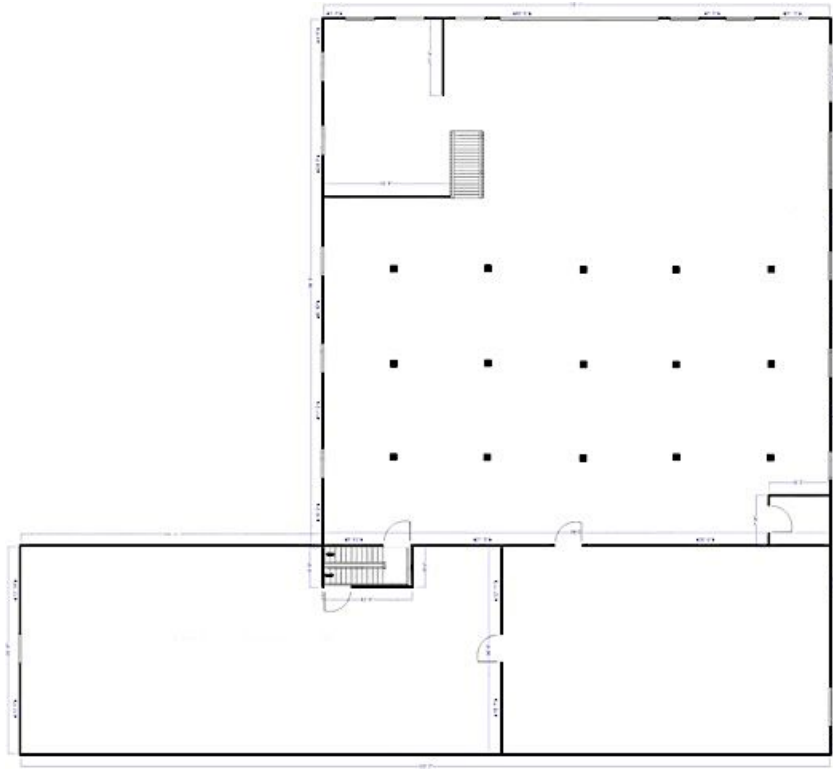


# Current Layout

## Floor 1



## Floor 2

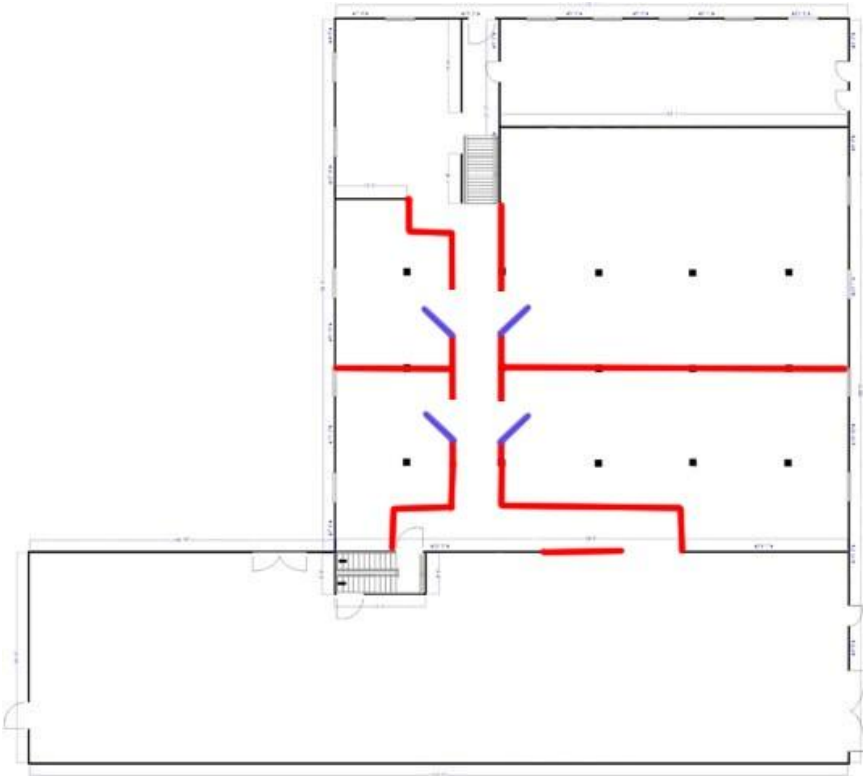


FLOOR PLAN

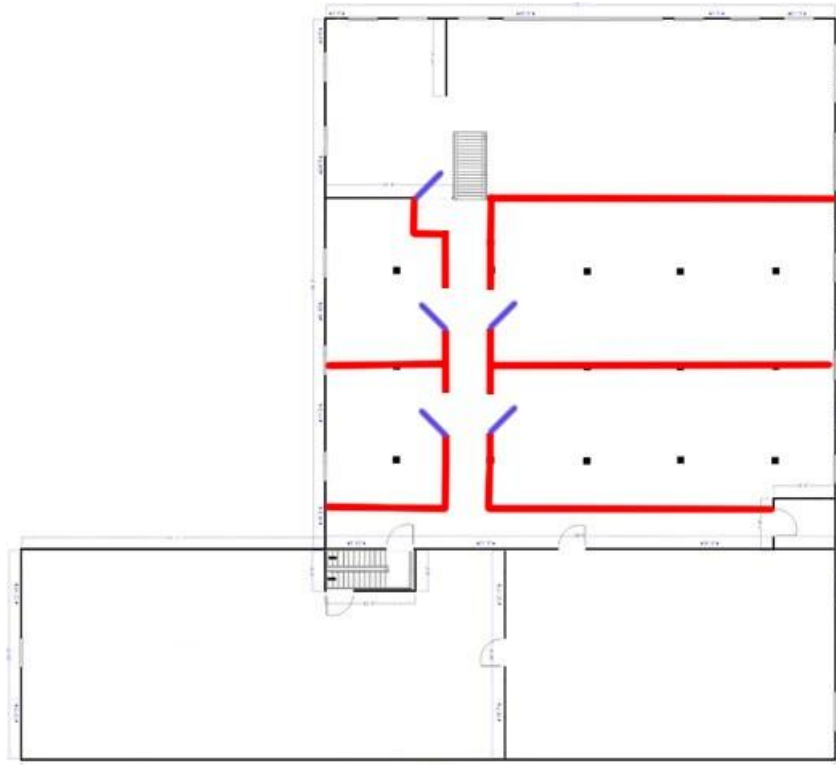


# Potential Suite Layouts

Floor 1



Floor 2



POTENTIAL FLOOR PLAN





**METROPOLITAN  
COMMERCIAL**

**TIM NOVAK**

Senior Vice President,  
Sales Representative

416.703.6621 x 246

[tim.novak@metcomrealty.com](mailto:tim.novak@metcomrealty.com)

**PAUL KOTYK**

Senior Associate,  
Broker

416.703.6621 x 245

[paul.kotyk@metcomrealty.com](mailto:paul.kotyk@metcomrealty.com)

150 BEVERLEY STREET, UNIT 1

TORONTO, ON | M5T 1Y5

416.703.6621

[WWW.METCOMREALTY.COM](http://WWW.METCOMREALTY.COM)

The information contained herein has been gathered from sources deemed reliable. However, Metropolitan Commercial Realty Inc., Brokerage, its agents, or employees make no representations or warranties on the accuracy of said information. Prospective tenants and their agents are advised to independently verify any information provided herein.

Metropolitan Commercial Realty Inc., Brokerage