

FOR LEASE | FLEX SPACE  
**915 DUPONT STREET**

TORONTO, ON



METROPOLITAN  
COMMERCIAL





## DETAILS

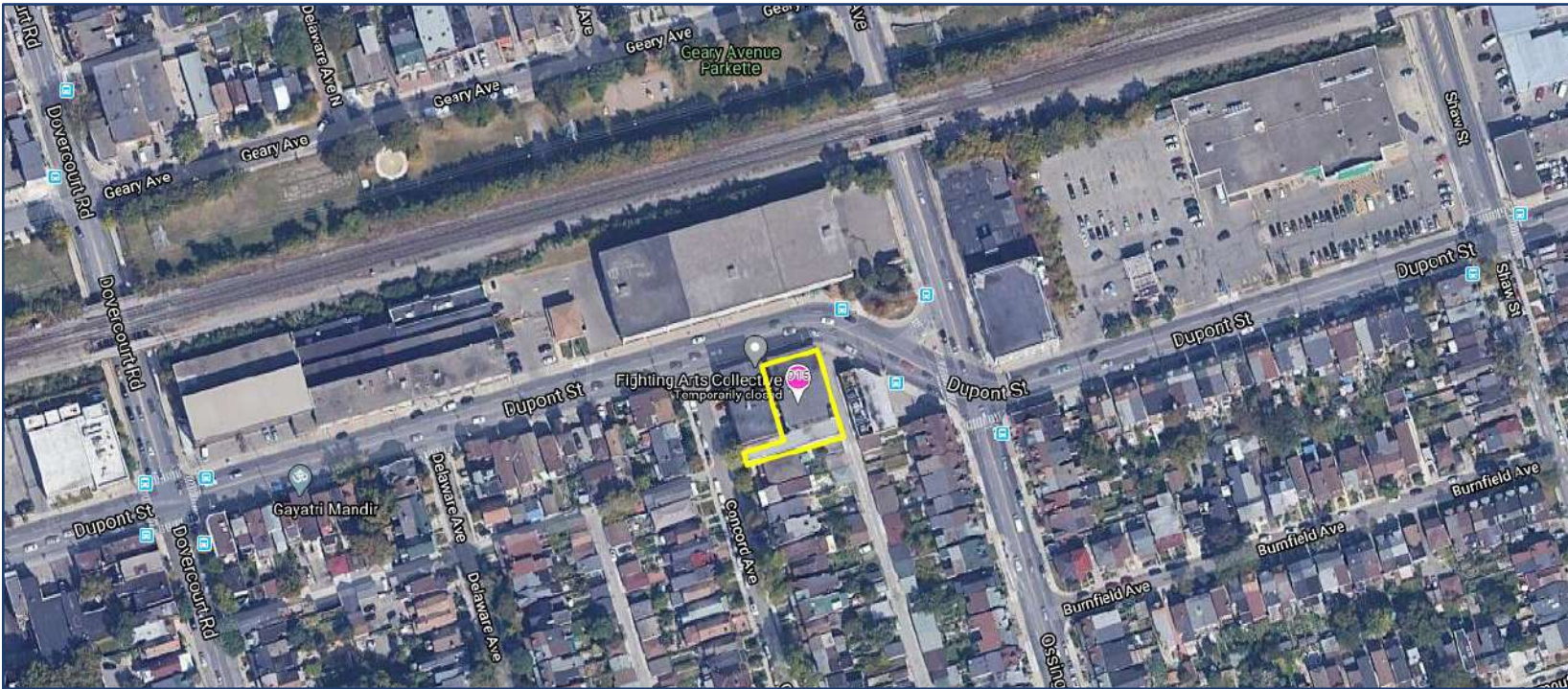
---

<b>Location</b>	Dupont Street, West of Ossington Avenue <a href="#">Click Here for Map</a>	
<b>Building Details</b>	First Floor	6,500 SF
	Second Floor	8,200 SF
	(Space can be divisible to 2,000 SF unit or combined to as large as 14,700 SF)	
<b>Semi-Gross Rental Rate</b>	\$35.00 PSF/YR + Utilities	
<b>Tenant Improvement Allowance</b>	TBD	
<b>Term</b>	3-10 Years	
<b>Possession</b>	Immediately	

## PROPERTY FEATURES

---

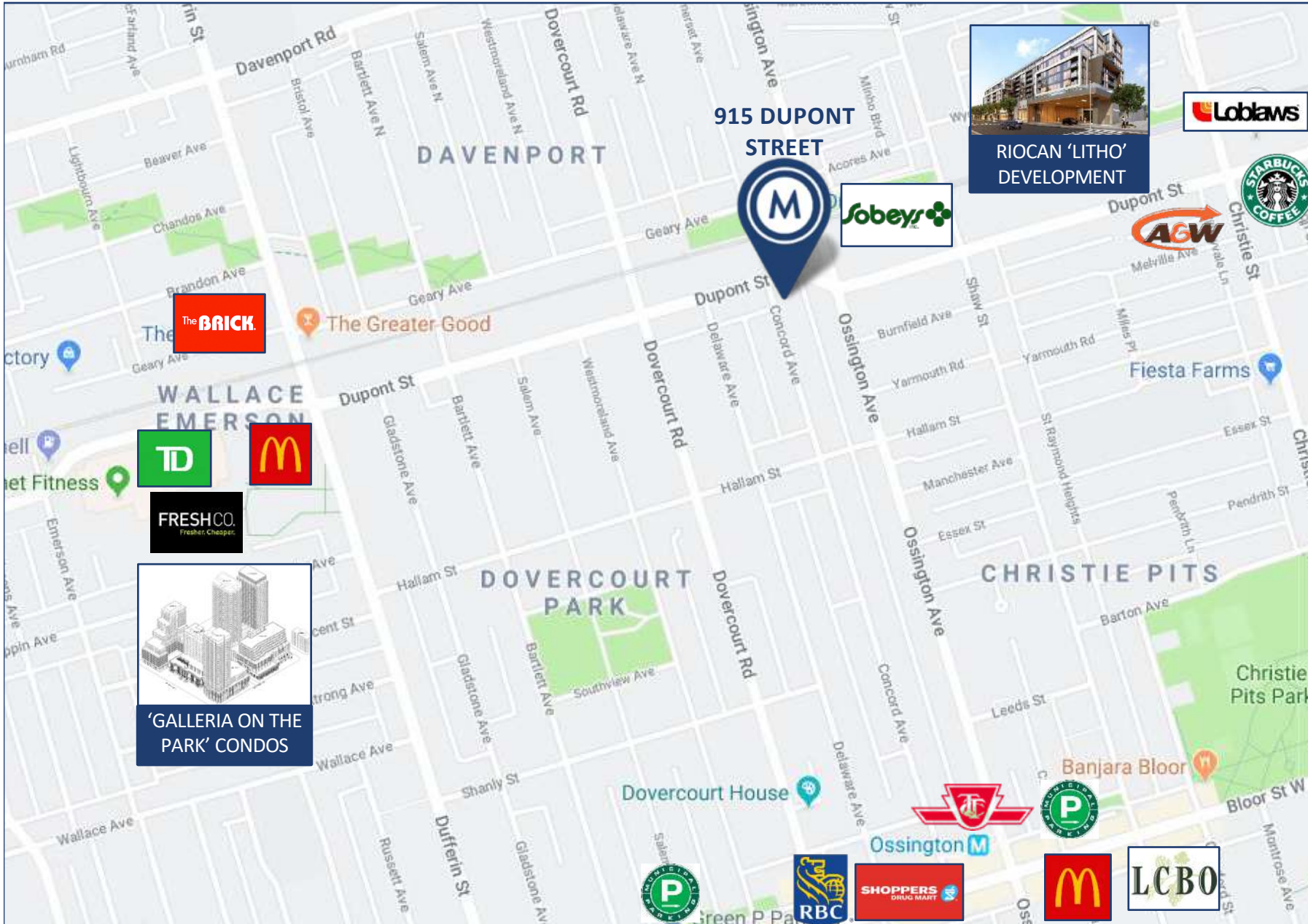
- 14,700 SF feet of open-concept “blank slate” space at the Dupont St. and Ossington Ave. intersection
- Classic 1930's industrial two-storey building
- Ideal for a variety of uses (creative, studio, fitness, etc.)
- Parking available (Limited)
- 12' ceiling height
- TTC accessible via the 63 Ossington bus from Bloor Street West, (Ossington Subway Station)
- 3 minute walk to Sobeys, Faema Café and Loblaws



915 DUPONT STREET | FOR LEASE



BUILDING PROFILE/ AERIAL MAP



AREA MAP

915 DUPONT STREET | FOR LEASE



PHOTOS

915 DUPONT STREET | FOR LEASE



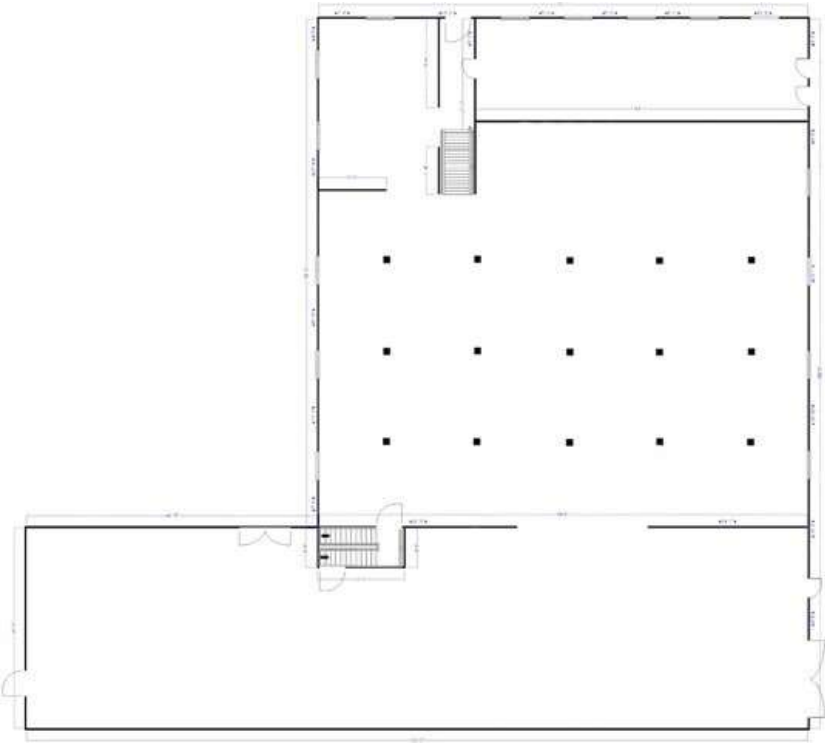
## Rendering of Potential Finish to Space



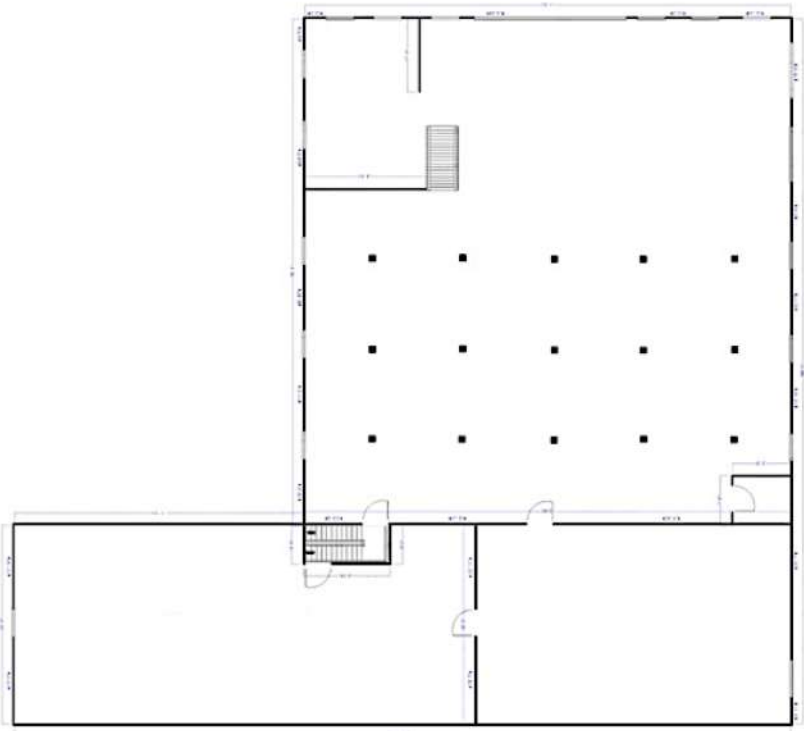
PHOTOS

Current Layout

Floor 1

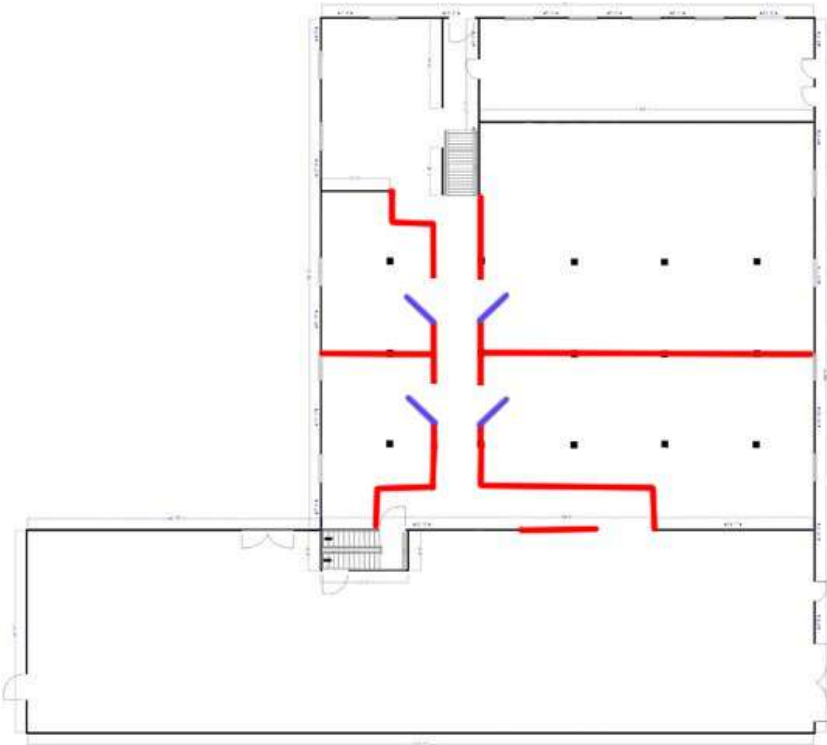


Floor 2

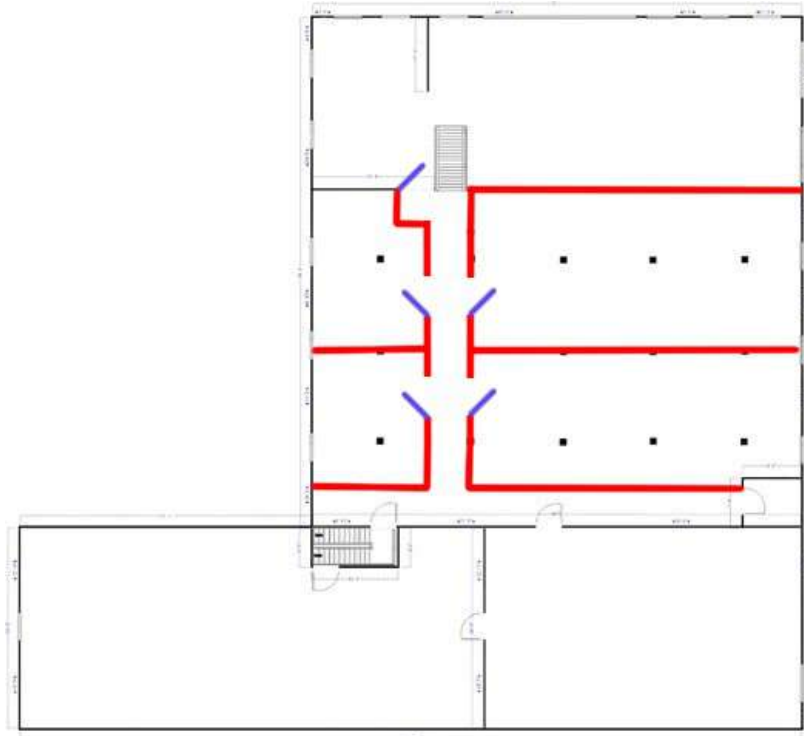


## Potential Suite Layouts

Floor 1



Floor 2







# METROPOLITAN COMMERCIAL

626 King St West, Suite 302  
Toronto, ON  
M5V 1M7

[www.metcomrealty.com](http://www.metcomrealty.com)

## CONTACT:

### **PAUL KOTYK\***

Senior Associate  
416.703.6621 Ext. 245  
[paul.kotyk@metcomrealty.com](mailto:paul.kotyk@metcomrealty.com)

### **TIM NOVAK\***

Senior Vice President  
416.703.6621 Ext. 246  
[Tim.novak@metcomrealty.com](mailto:Tim.novak@metcomrealty.com)