

FOR SUB-LEASE | OFFICE/STUDIO SPACE

915 DUPONT STREET

TORONTO, ON



METROPOLITAN
COMMERCIAL





DETAILS

Location Dupont Street, West of Ossington Avenue [Click Here for Map](#)

Unit Details	<u>Unit</u>	<u>Square Footage*</u>
	103	1,404 SF
	104	585 SF
	105	819 SF
	203	936 SF
	204	702 SF
	205	1,170 SF
	208	-

*Sizes are approximate. All units will be measured prior to offering.

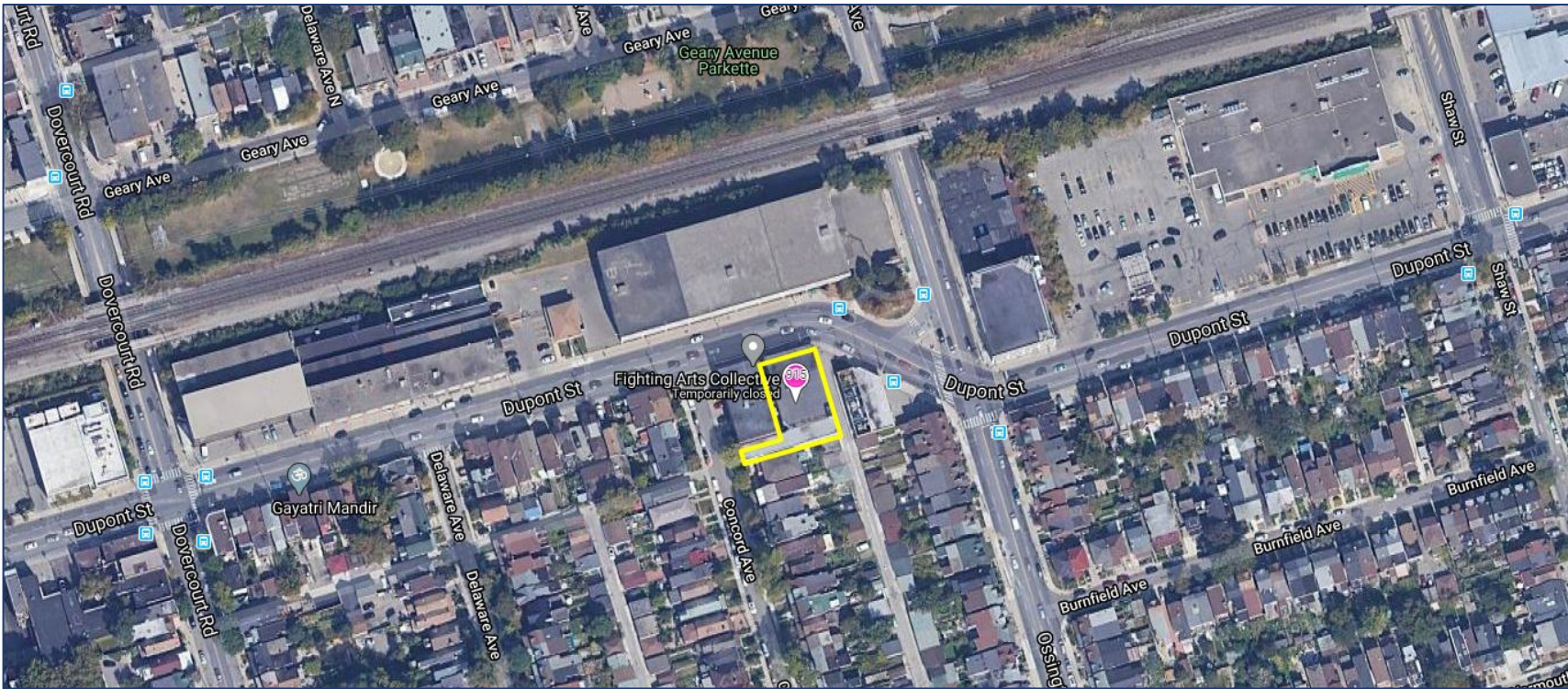
Semi-Gross Rental Rate \$35.00 PSF/YR + Utilities

Term 3-10 Years

Possession Immediately

PROPERTY FEATURES

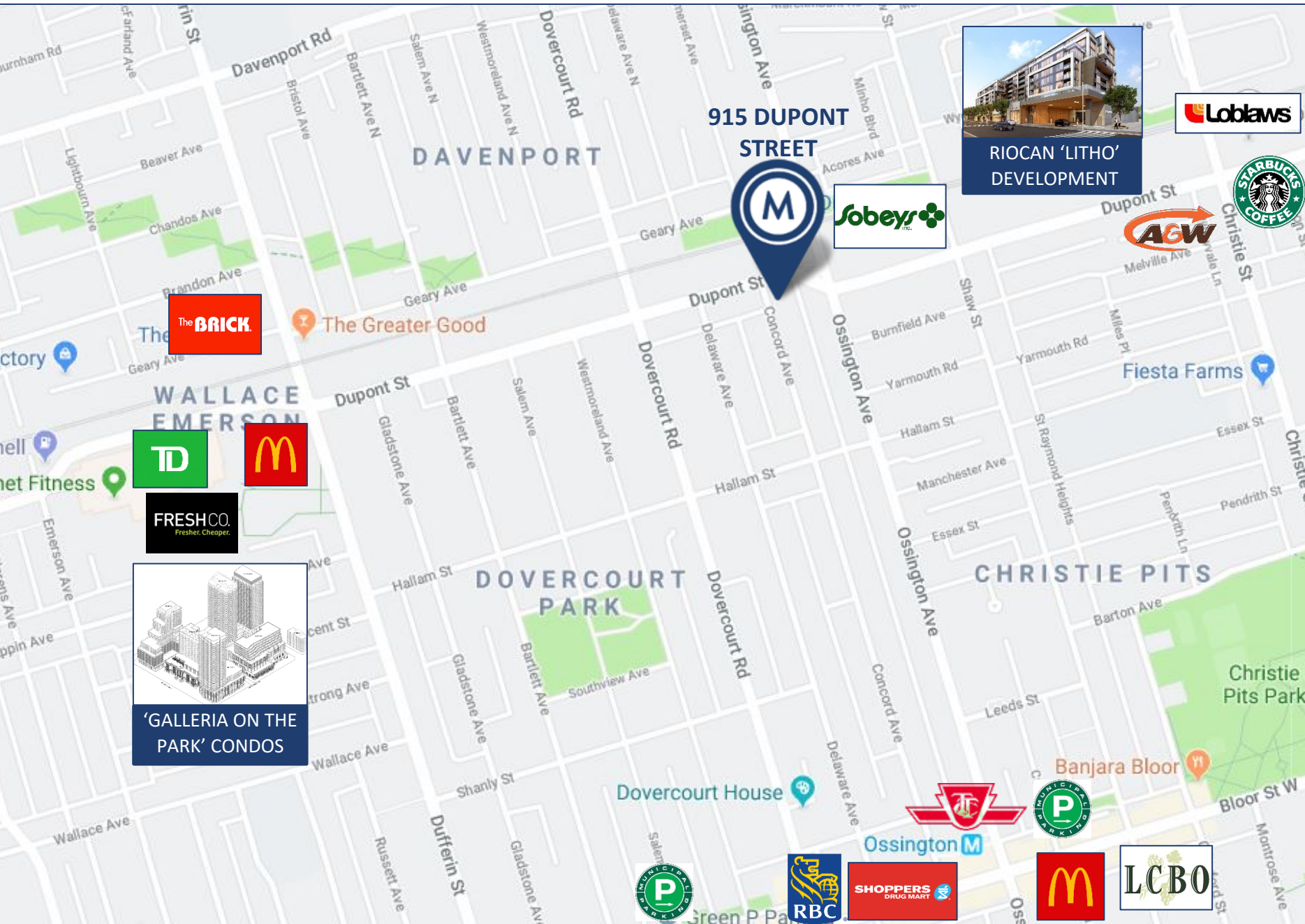
- A variety of office/studio spaces at the Dupont St. and Ossington Ave. intersection
- Classic 1930's industrial two-storey building
- Parking available (Limited)
- 12' ceiling height
- TTC accessible via the 63 Ossington bus from Bloor Street West, (Ossington Subway Station)
- 3 minute walk to Sobeys, Faema Café and Loblaws



915 DUPONT STREET | FOR SUB-LEASE



BUILDING PROFILE/ AERIAL MAP

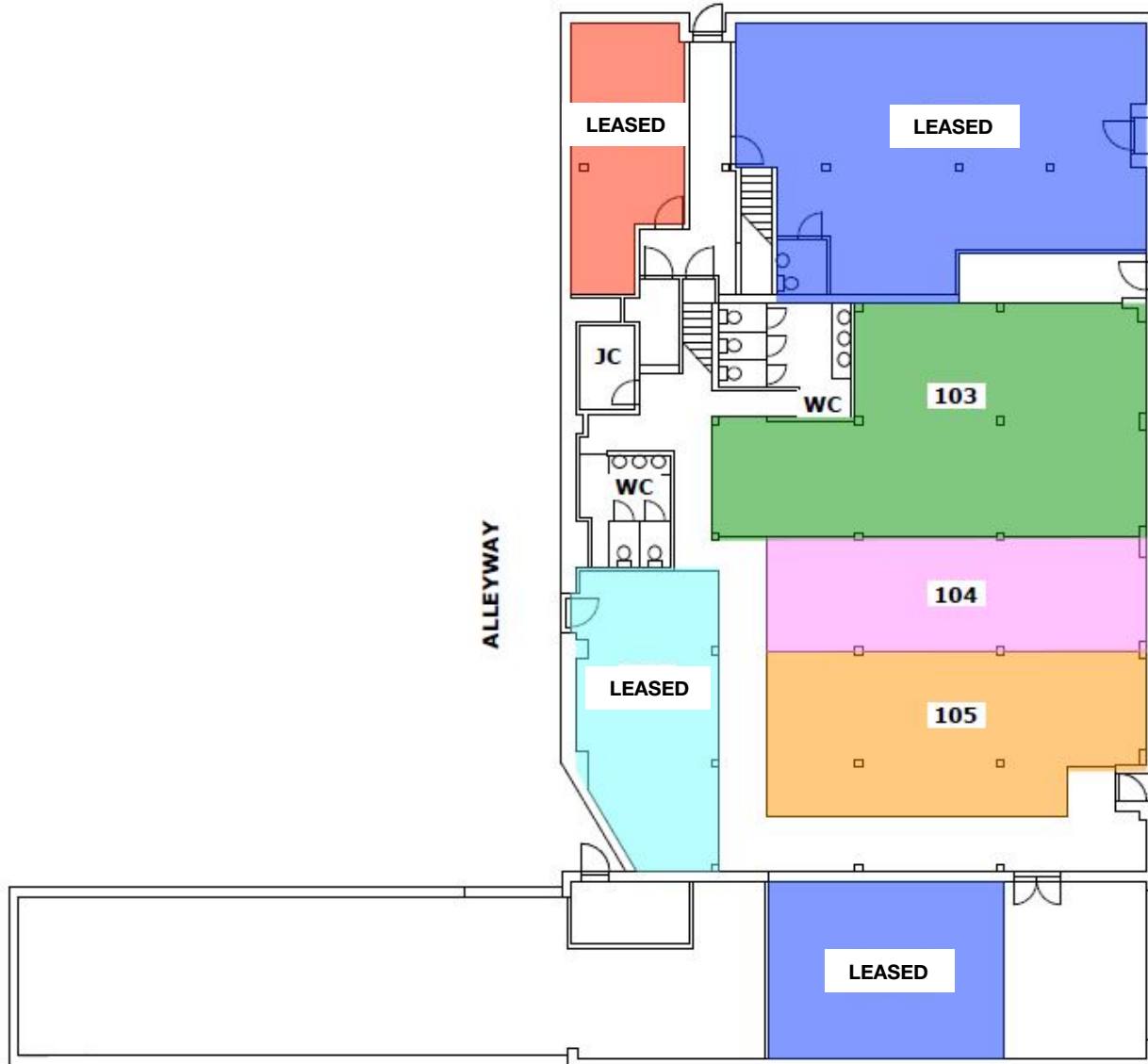


AREA MAP



First Floor

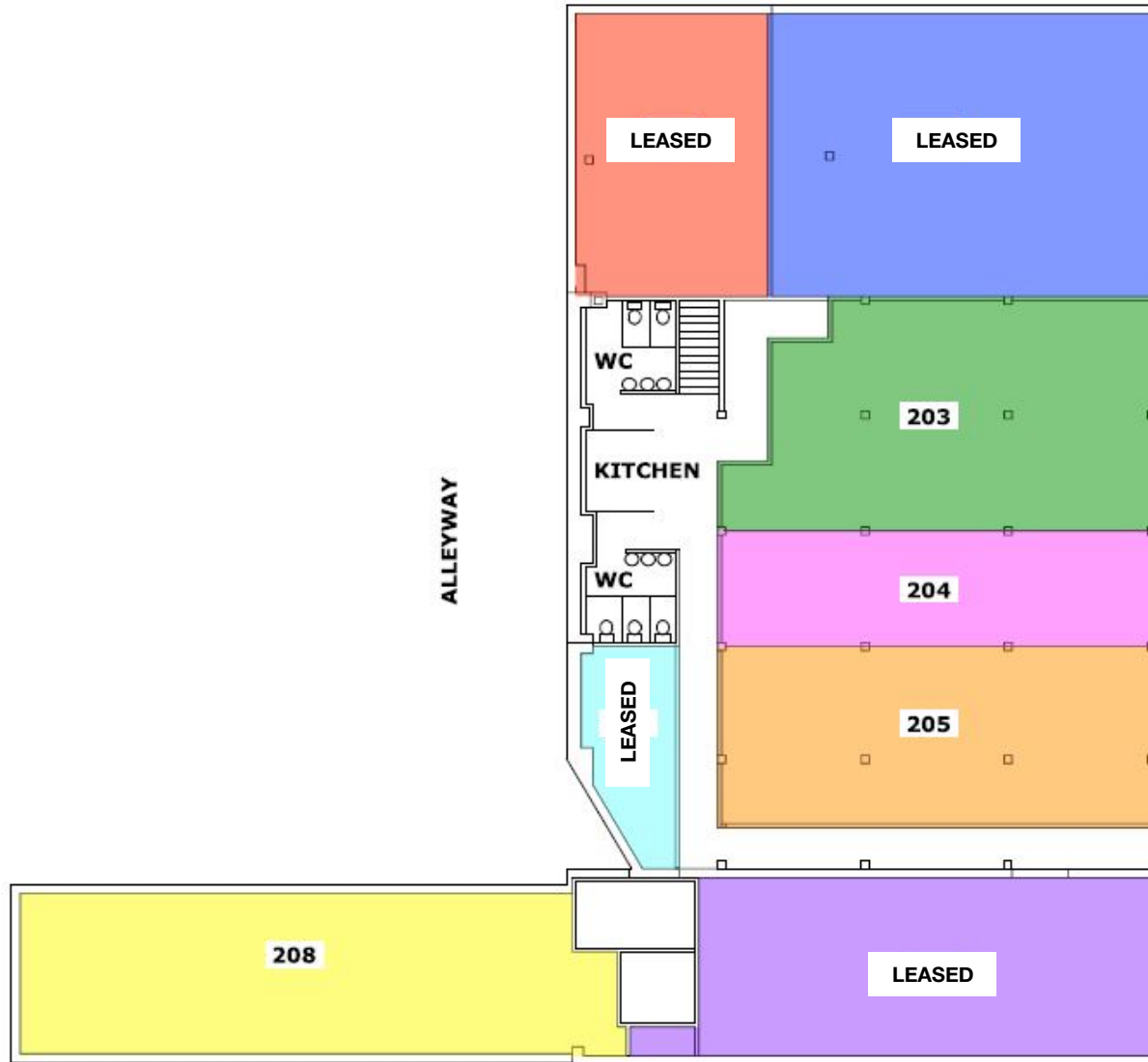
DUPONT ST.





Second Floor

DUPONT ST.



FLOOR PLAN



METROPOLITAN COMMERCIAL

626 King St West, Suite 302
Toronto, ON
M5V 1M7

www.metcomrealty.com

CONTACT:

PAUL KOTYK*

Senior Associate
416.703.6621 Ext. 245
paul.kotyk@metcomrealty.com

TIM NOVAK*

Senior Vice President
416.703.6621 Ext. 246
Tim.novak@metcomrealty.com