

FOR LEASE | FLEX SPACE

915 DUPONT STREET

TORONTO, ON



**METROPOLITAN
COMMERCIAL**





DETAILS

LOCATION	Dupont Street, West of Ossington Avenue Click Here for Map		
BUILDING DETAILS	<u>UNIT</u>	<u>SQUARE FOOTAGE*</u>	<u>MONTHLY RENTAL RATE</u>
	105	895 SF	\$30/sf semi-gross (+ utilities)

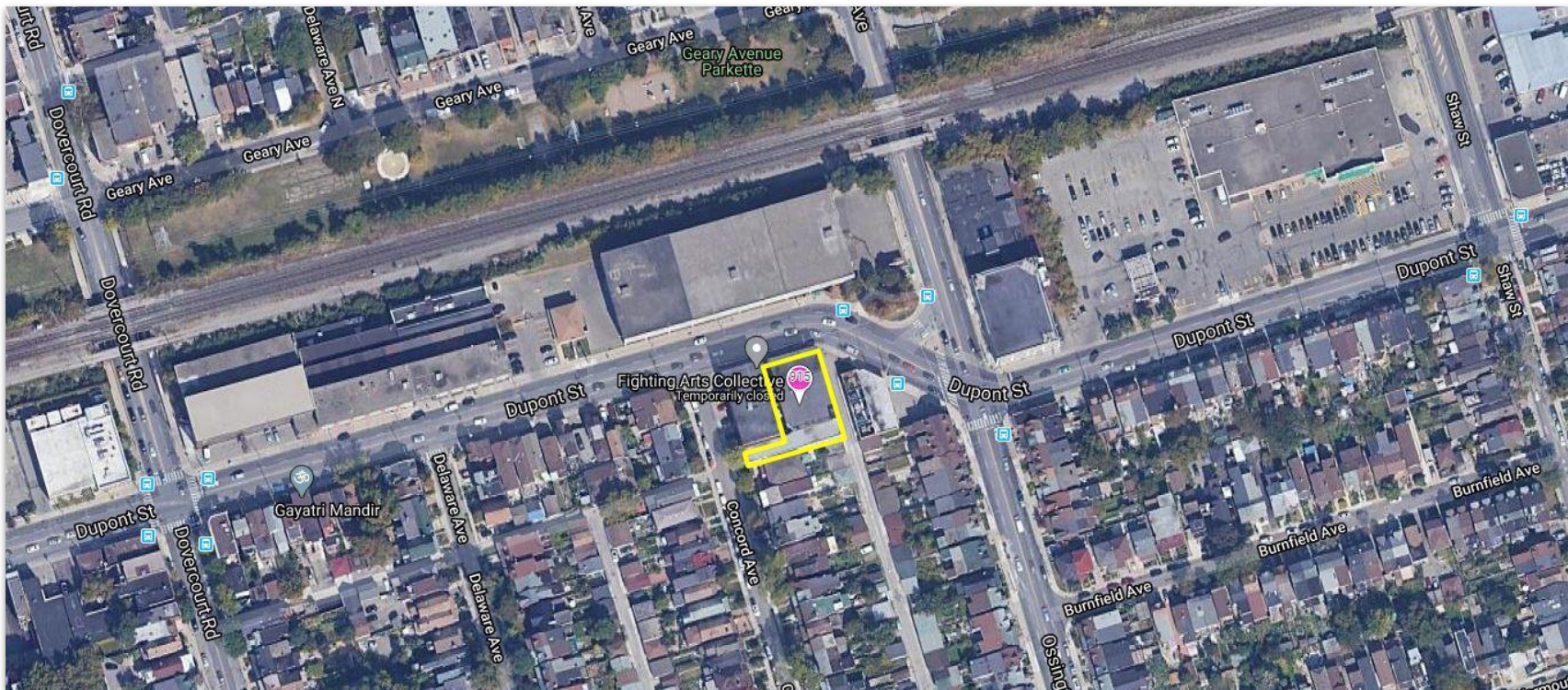
*Sizes are approximate. All units will be measured prior to offering

TERM 3-10 Years

POSSESSION Immediate

PROPERTY FEATURES

- A variety of office/studio spaces at the Dupont St. and Ossington Ave. intersection
- Classic 1930's industrial two-storey building
- Parking available (Limited)
- 12' ceiling height
- TTC accessible via the 63 Ossington bus from Bloor Street West, (Ossington Subway Station)
- 3 minute walk to Sobeys, Faema Café and Loblaws





AREA MAP



915 DUPONT STREET | FOR SUB-LEASE



**METROPOLITAN
COMMERCIAL**

TIM NOVAK

Senior Vice President,
Sales Representative

416.703.6621 x 246

tim.novak@metcomrealty.com

PAUL KOTYK

Senior Associate,
Broker

416.703.6621 x 245

paul.kotyk@metcomrealty.com

150 BEVERLEY STREET, UNIT 1

TORONTO, ON | M5T 1Y5

416.703.6621

WWW.METCOMREALTY.COM

The information contained herein has been gathered from sources deemed reliable. However, Metropolitan Commercial Realty Inc., Brokerage, its agents, or employees make no representations or warranties on the accuracy of said information. Prospective tenants and their agents are advised to independently verify any information provided herein.

Metropolitan Commercial Realty Inc., Brokerage