

FOR LEASE | RETAIL / RESTURANT / OFFICE SPACE

# 211 GEARY AVENUE

TORONTO | ON



METROPOLITAN  
COMMERCIAL





## DETAILS

---

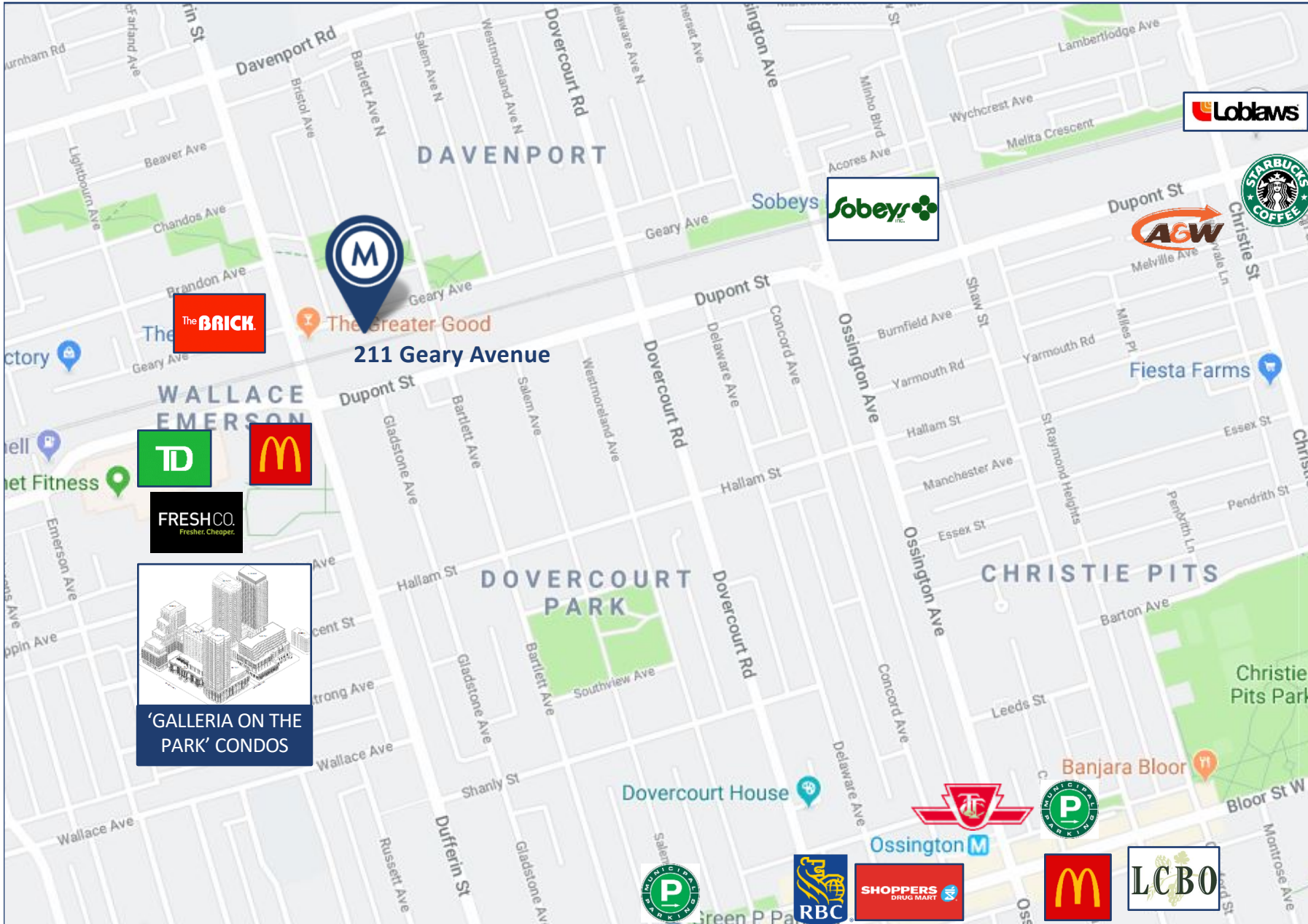
<b>Location</b>	Located on the South side of Geary Avenue, just East of Dufferin Street. <a href="#">Click Here for Map</a>
<b>Details</b>	3,117 SF
<b>Net Rental Rate</b>	\$30.00 PSF/YR
<b>Additional Rent (TMI)</b>	\$9.00 PSF/YR
<b>Term</b>	3-5 years
<b>Possession</b>	Immediate

## FEATURES

---

- Rare find in the sought after Geary Avenue location.
- 20 ft ceilings with 2 mezzanines.
- Grandfathered in as a restaurant with one of the few allowable liquor licenses and licensed patios on Geary Avenue.
- The liquor licence is for 175 people.
- Can be used as a restaurant or converted into office, retail, and studio use.
- Only a 10 minute bus ride to Dufferin TTC Subway Station.





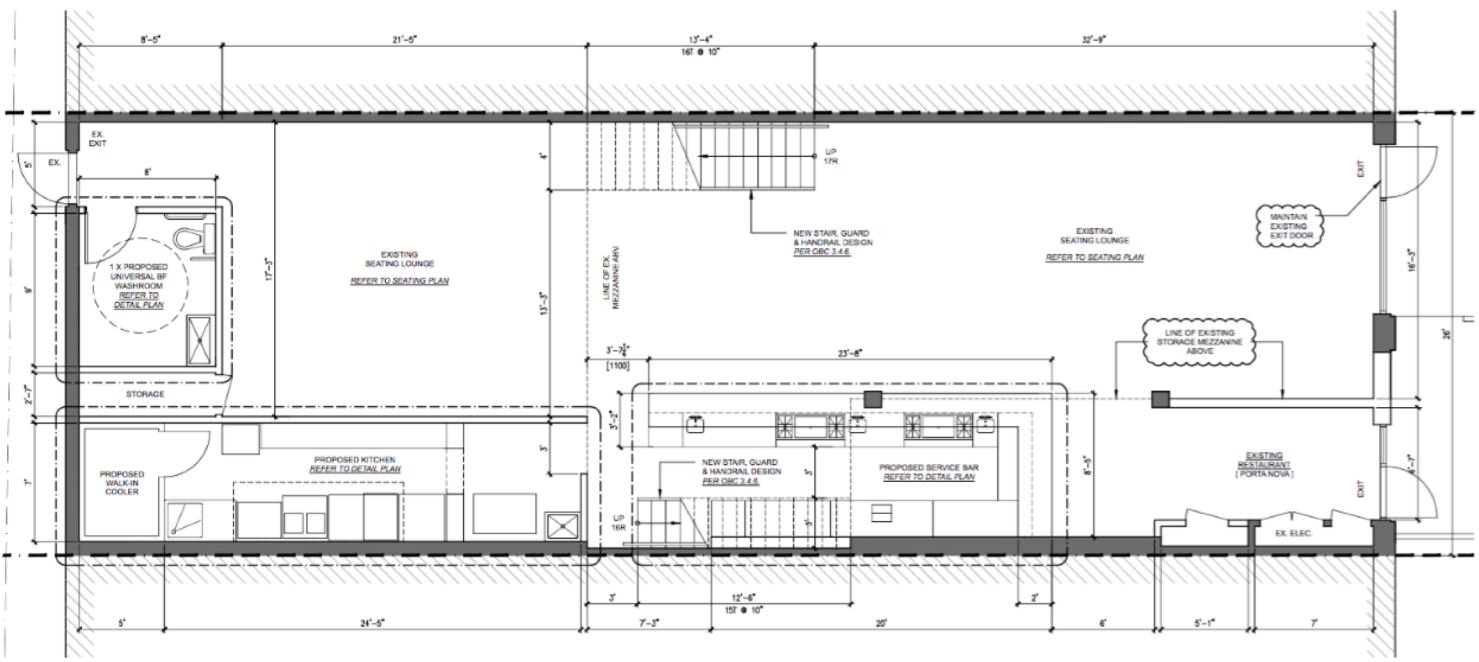
AREA MAP

211 GEARY AVENUE | FOR LEASE

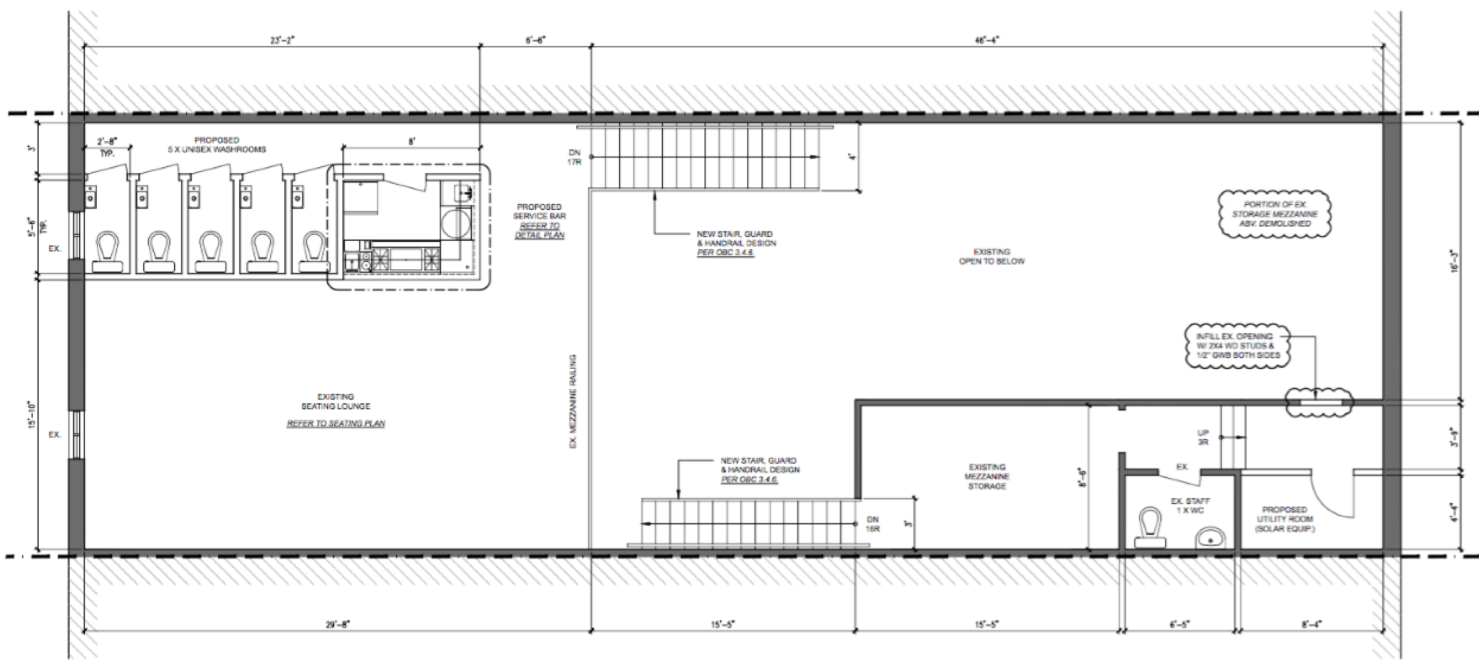


FLOOR PLANS

MAIN FLOOR



SECOND FLOOR (MEZZANINES)





# METROPOLITAN COMMERCIAL

626 King St West, Suite 302  
Toronto, ON  
M5V 1M7

[www.metcomrealty.com](http://www.metcomrealty.com)

## CONTACT:

**David Fradkin\***  
416.703.6621 ext. 250  
[David.fradkin@metcomrealty.com](mailto:David.fradkin@metcomrealty.com)