

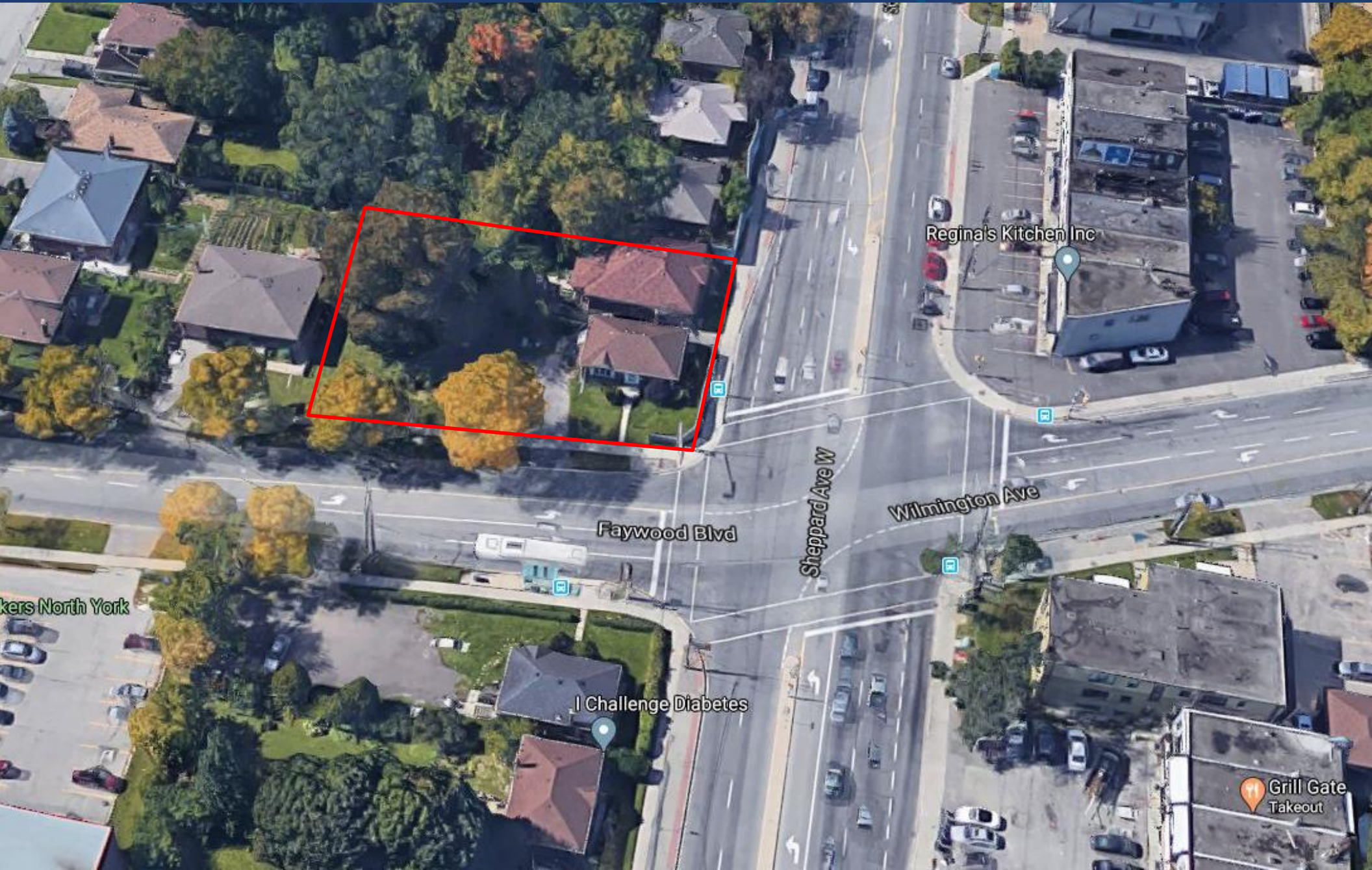
FOR SALE | ASSEMBLY DEVELOPMENT OPPORTUNITY

843-845 SHEPPARD AVENUE WEST

TORONTO | ON



METROPOLITAN
COMMERCIAL





DETAILS

Location	Sheppard Avenue West, just West of Faywood Boulevard (Click Here For Map)
Lot Area	15,800 SF (2 properties combined) (Approx.)
Lot Dimensions	94.16' Frontage x 155.47' Depth (2 properties combined) (Irregular)
Zoning	RD (f15.0; a550) (x5)
Co-operating Commission	2%

FEATURES

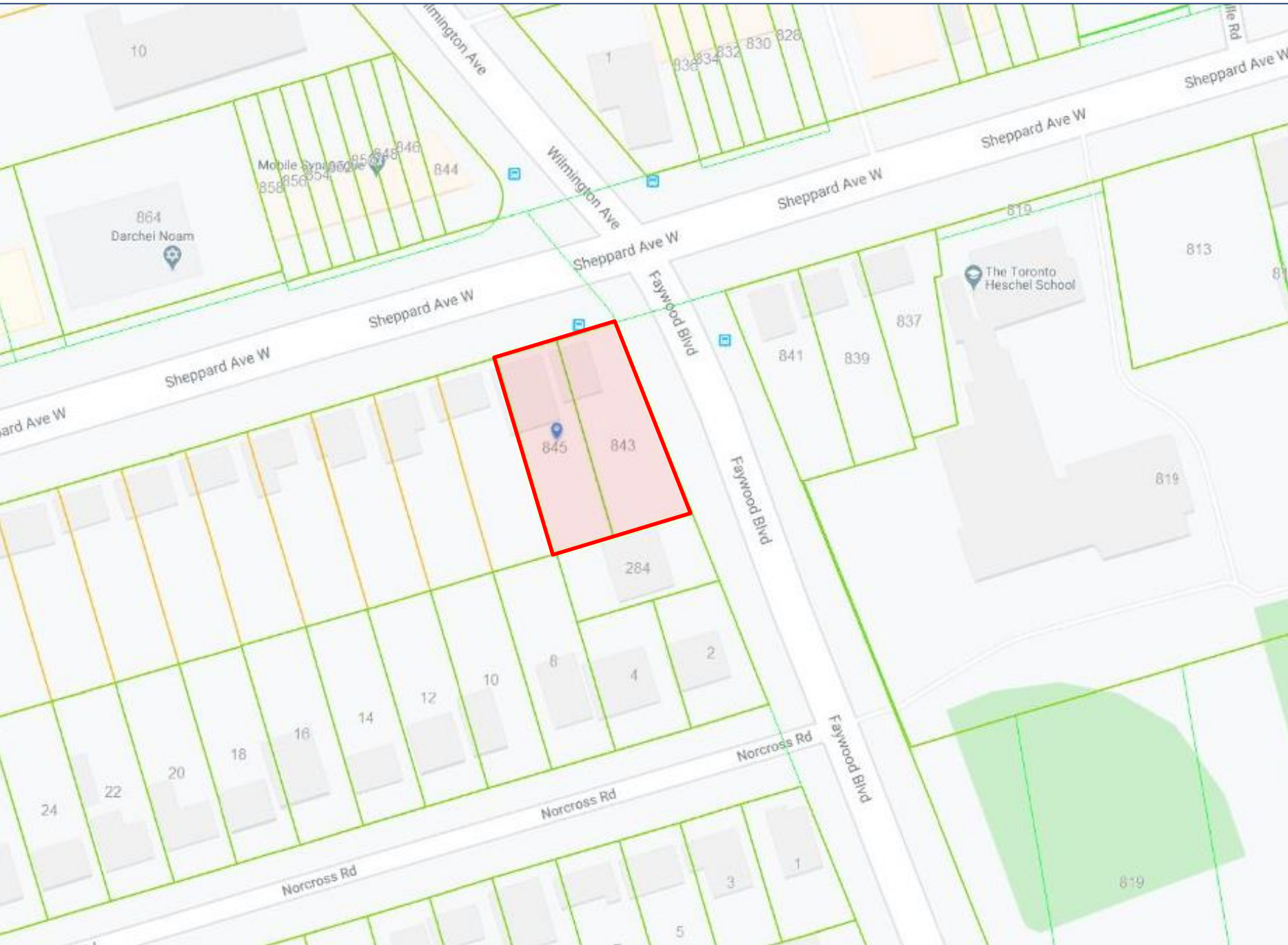
- An opportunity to purchase and develop 2 residential houses.
- Located on Sheppard Avenue West, prime corner location. 843 and 845 Sheppard Avenue West offer 94.16 feet of frontage, and 155.47 feet of depth to develop.
- Close proximity to 2 TTC Subway stations, TTC buses at door, Highway 401 and the Allen Expressway.
- Both properties are tenanted, please do not disturb.
- For further information please contact listing agent.

ASKING PRICE

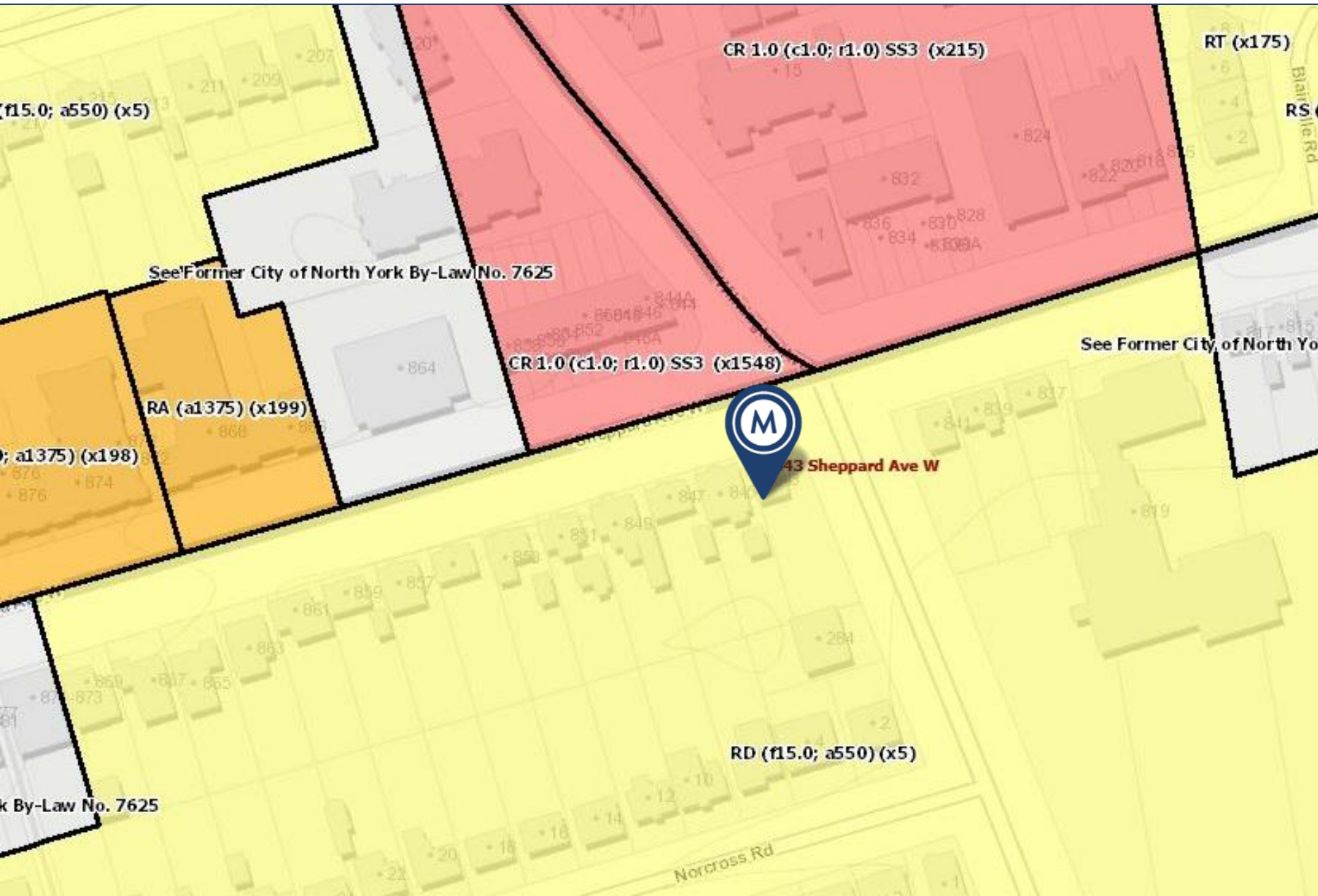
\$4,995,000



GEOWAREHOUSE MAP



843-845 SHEPPARD AVENUE WEST | FOR SALE



RD (f15.0; a550) (x5) Zoning

843-845 SHEPPARD AVENUE WEST | FOR SALE

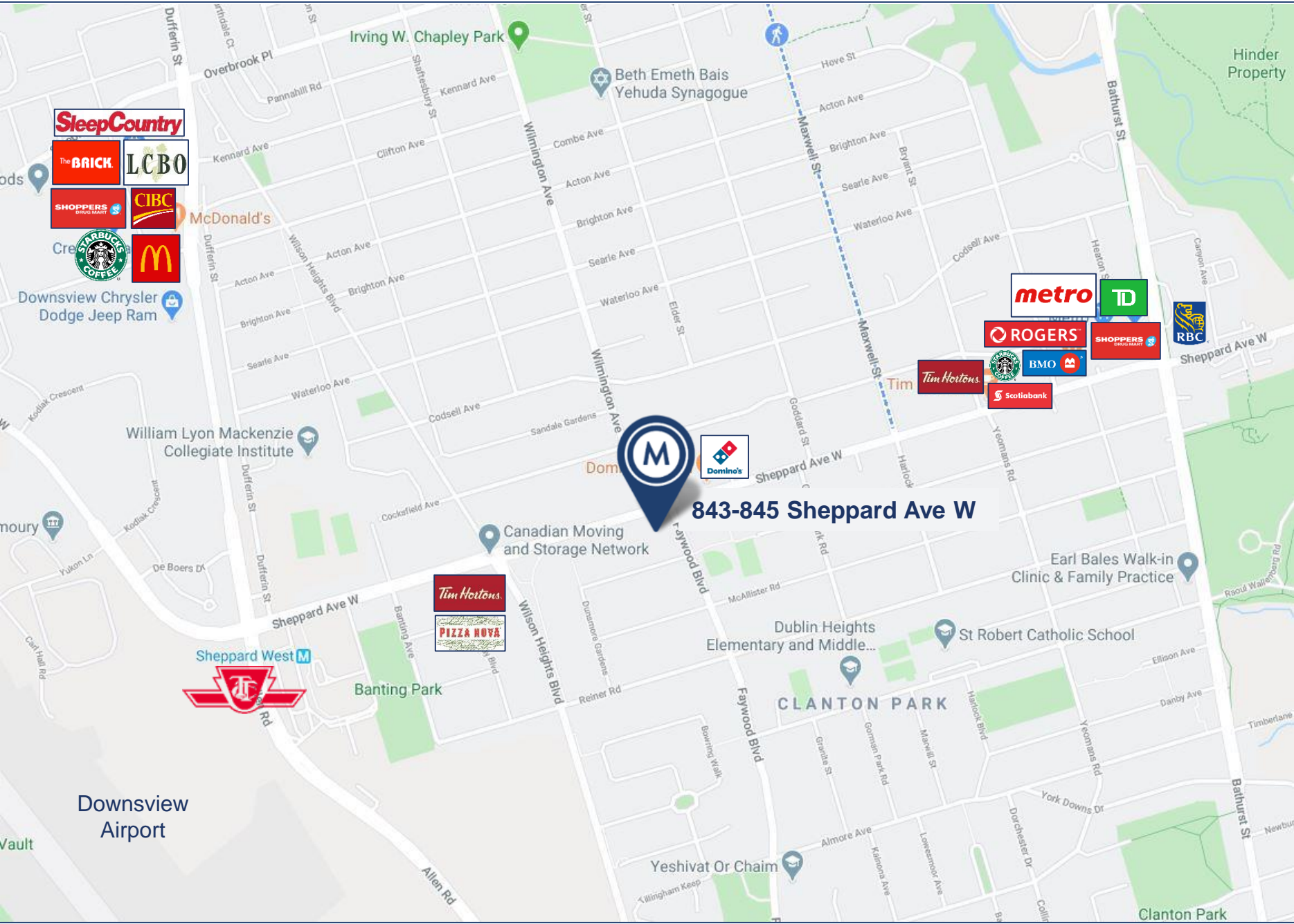


Land Use Designations

- Neighbourhoods
- Apartment Neighbourhoods
- Mixed Use Areas**
- Natural Areas
- Parks
- Other Open Space Areas (Including Golf Courses, Cemeteries, Public Utilities)
- Institutional Areas
- Regeneration Areas
- General Employment Areas
- Core Employment Areas
- Utility Corridors

OFFICIAL PLAN

843-845 Sheppard Avenue West is designated in as a 'Mixed Use Area' in the city of Toronto official plan. This somewhat corresponds with its zoning designation of RD (f15.0; a550) (x5)



AREA MAP

843-845 Sheppard Ave W

843-845 SHEPPARD AVENUE WEST | FOR SALE



METROPOLITAN COMMERCIAL

626 King St West, Suite 302
Toronto, ON
M5V 1M7

www.metcomrealty.com

CONTACT:

CLAIRE BLICKER*
Vice President
416.703.6621 ext. 232
claire.blicker@metcomrealty.com