

FOR LEASE | BRICK AND BEAM OFFICE SPACE
263 ADELAIDE STREET WEST
TORONTO, ON



SHORT-TERM
AVAILABILITY





263 ADELAIDE STREET WEST | FOR LEASE



DETAILS

Location SE Block of John St and Adelaide St W, in the heart of the Entertainment District.
[Click Here for Map](#)

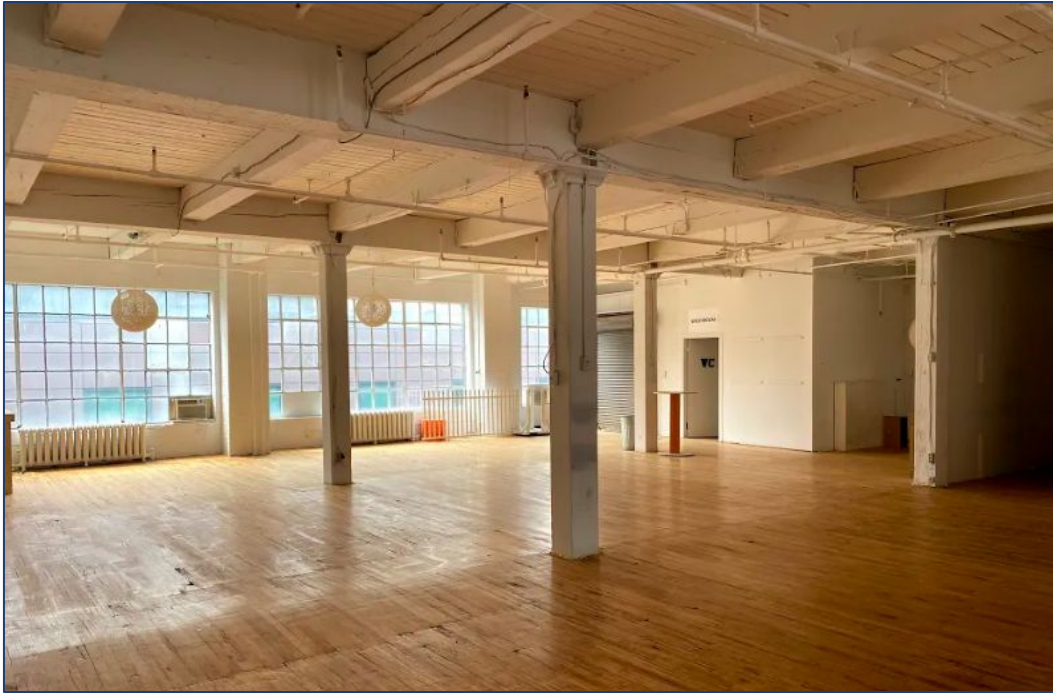
Building Details	<u>Unit #</u>	<u>Size (SF)</u>	<u>All-in Monthly Rental Rate</u>
	Suite 207	580 SF	\$1,750
	Suite 330	878 SF	\$2,575
	Suite 514	1,296 SF	\$3,200
	Basement West	5,721 SF	\$2,500
	Basement East	5,845 SF	\$2,500

Term Up to 12 months

Possession Immediate

FEATURES

- Classic brick & beam building
- High wood ceilings
- Hardwood flooring and exposed brick walls
- Inclusive of T.M.I. & utilities
- In-suite janitorial & HST in addition to monthly rental rate

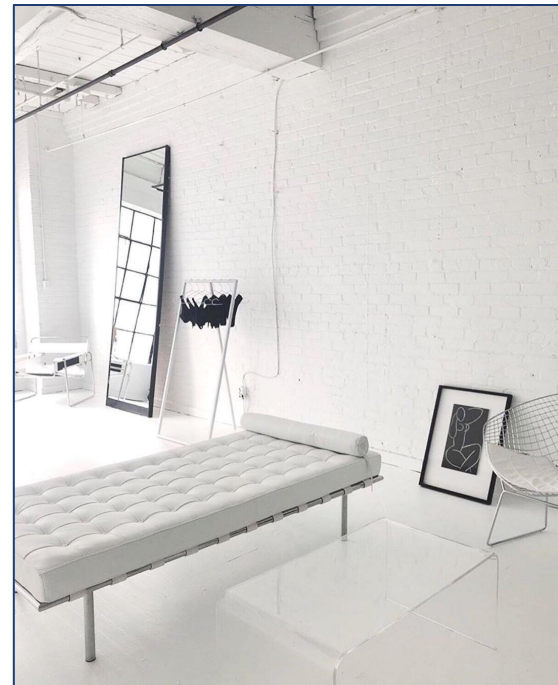
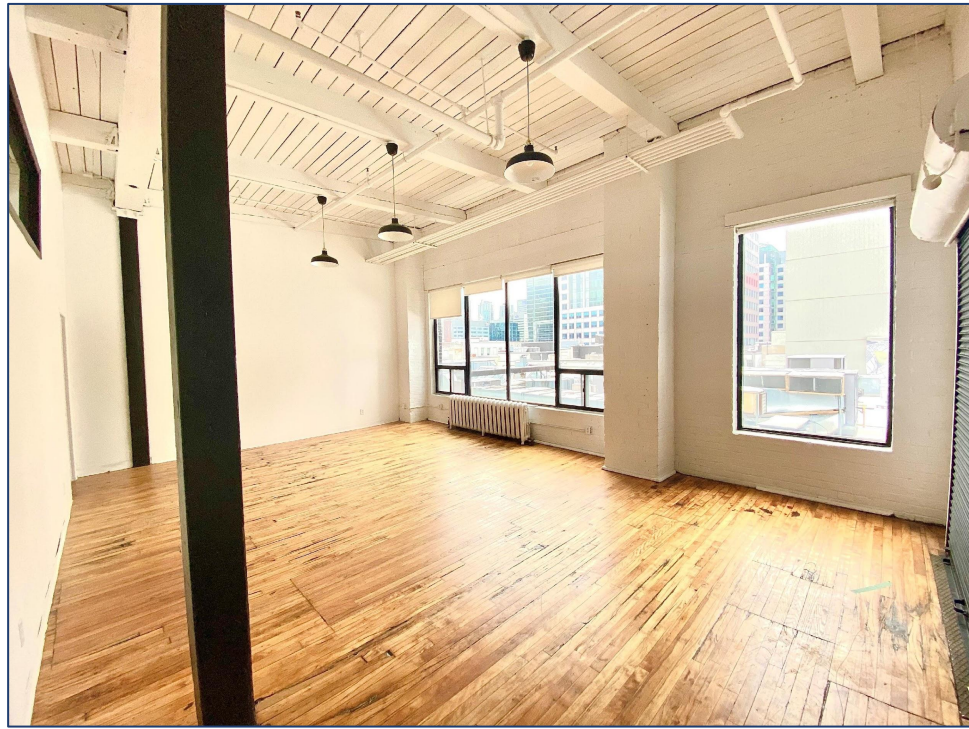
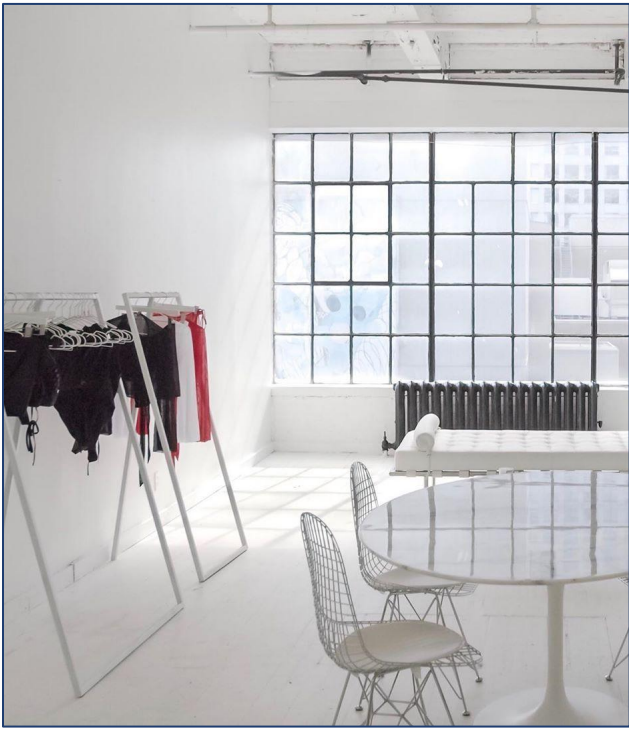


PHOTOS

263 ADELAIDE STREET WEST | FOR LEASE

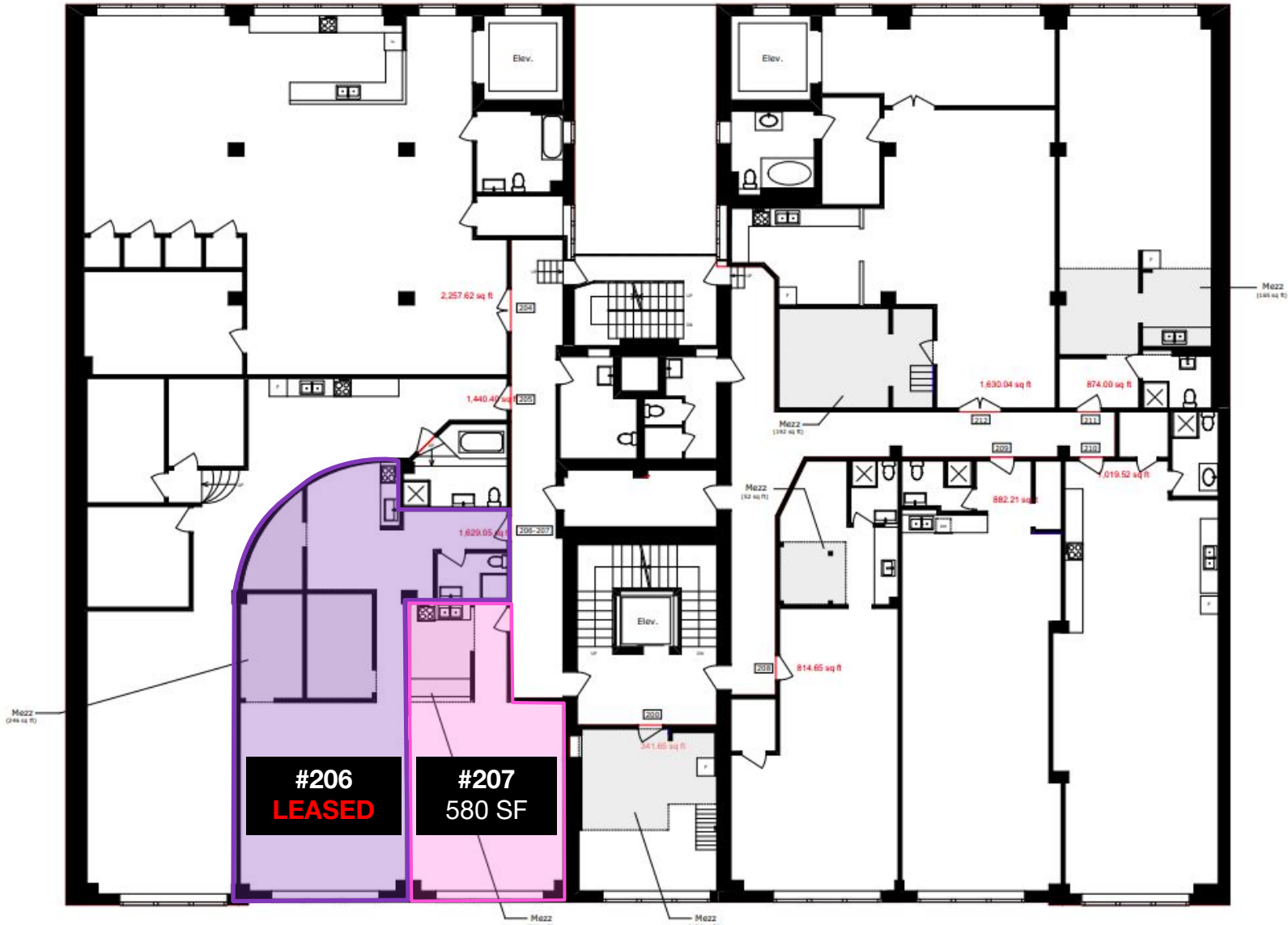


PHOTOS





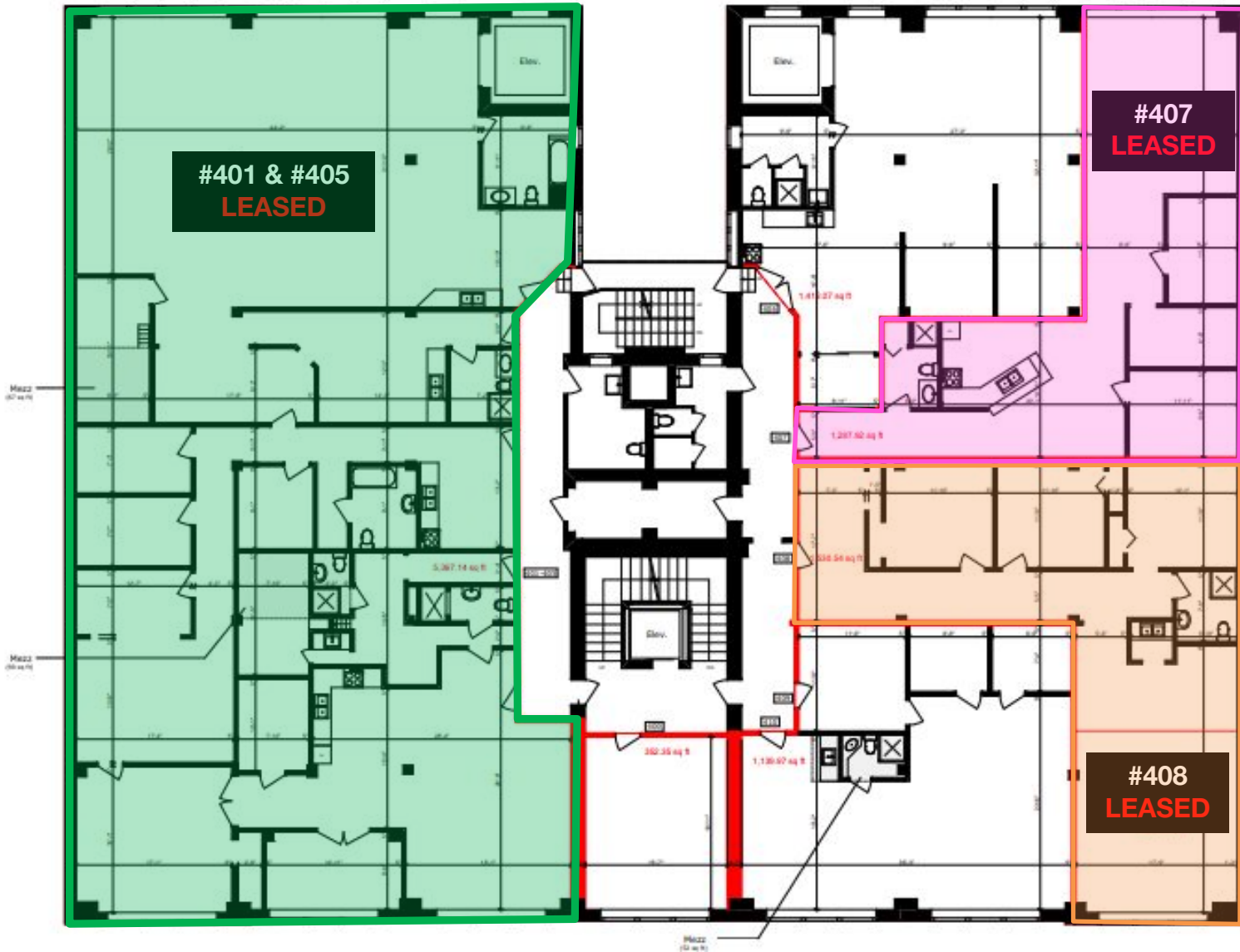
SECOND FLOOR



FLOOR PLAN



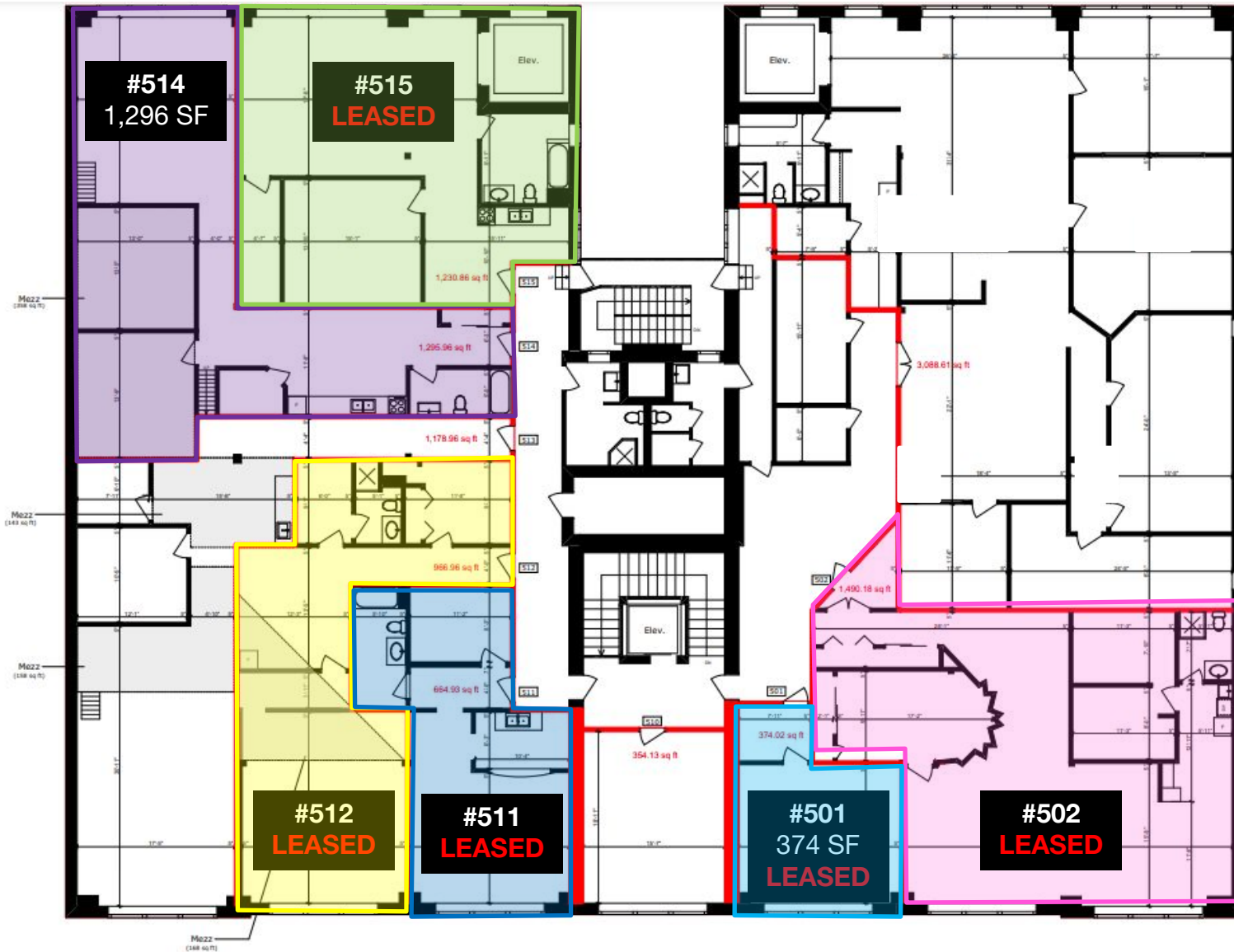
FOURTH FLOOR



FLOOR PLAN

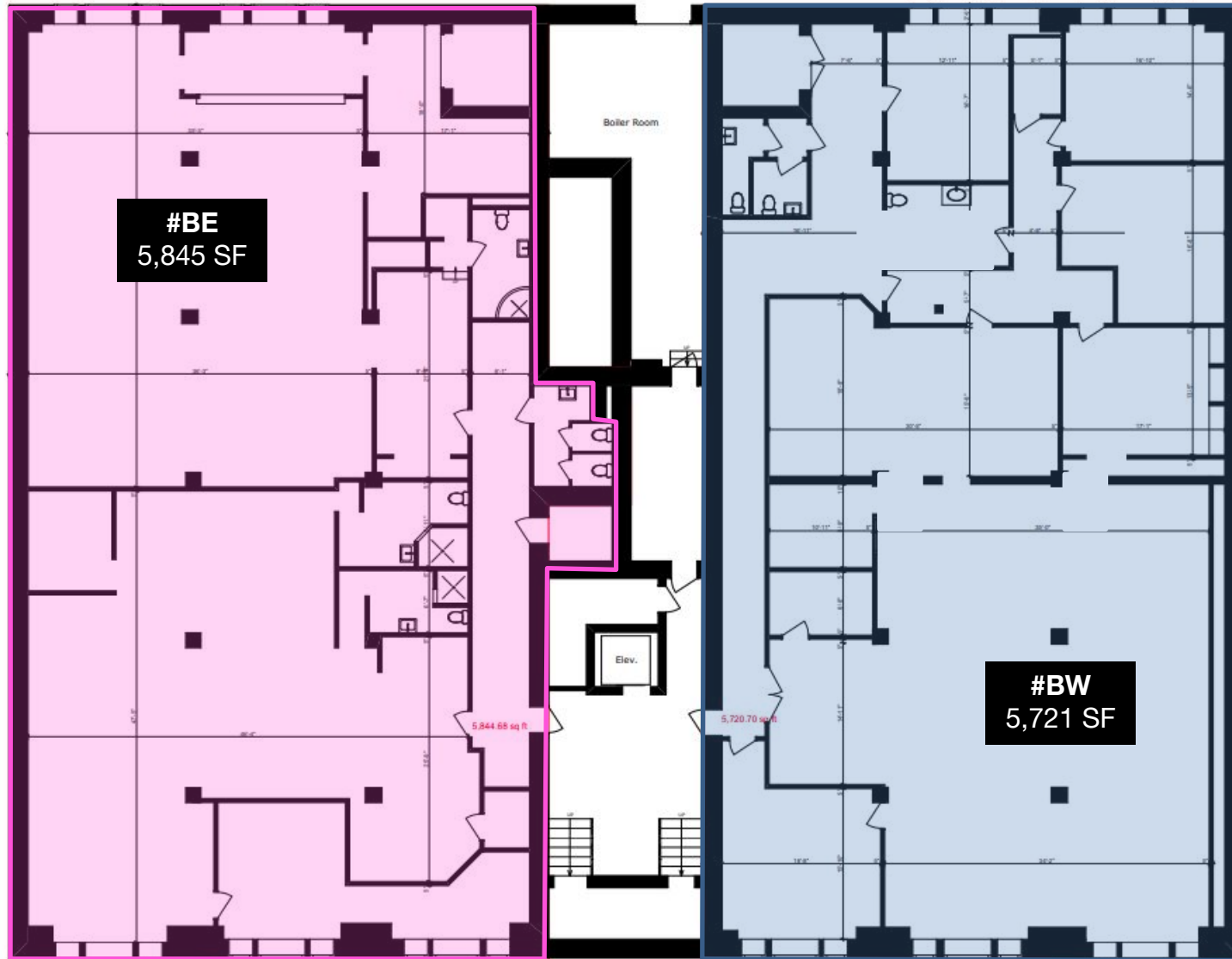


FIFTH FLOOR



FLOOR PLAN

BASEMENT





METROPOLITAN COMMERCIAL

626 King St West, Suite 302
Toronto, ON
M5V 1M7

www.metcomrealty.com

CONTACT:

PAUL KOTYK**

416.703.6621 x245

paul.kotyk@metcomrealty.com