

FOR LEASE | STUDIO OFFICE SPACE

28 INDUSTRIAL STREET

EAST YORK, TORONTO, ON



METROPOLITAN
COMMERCIAL



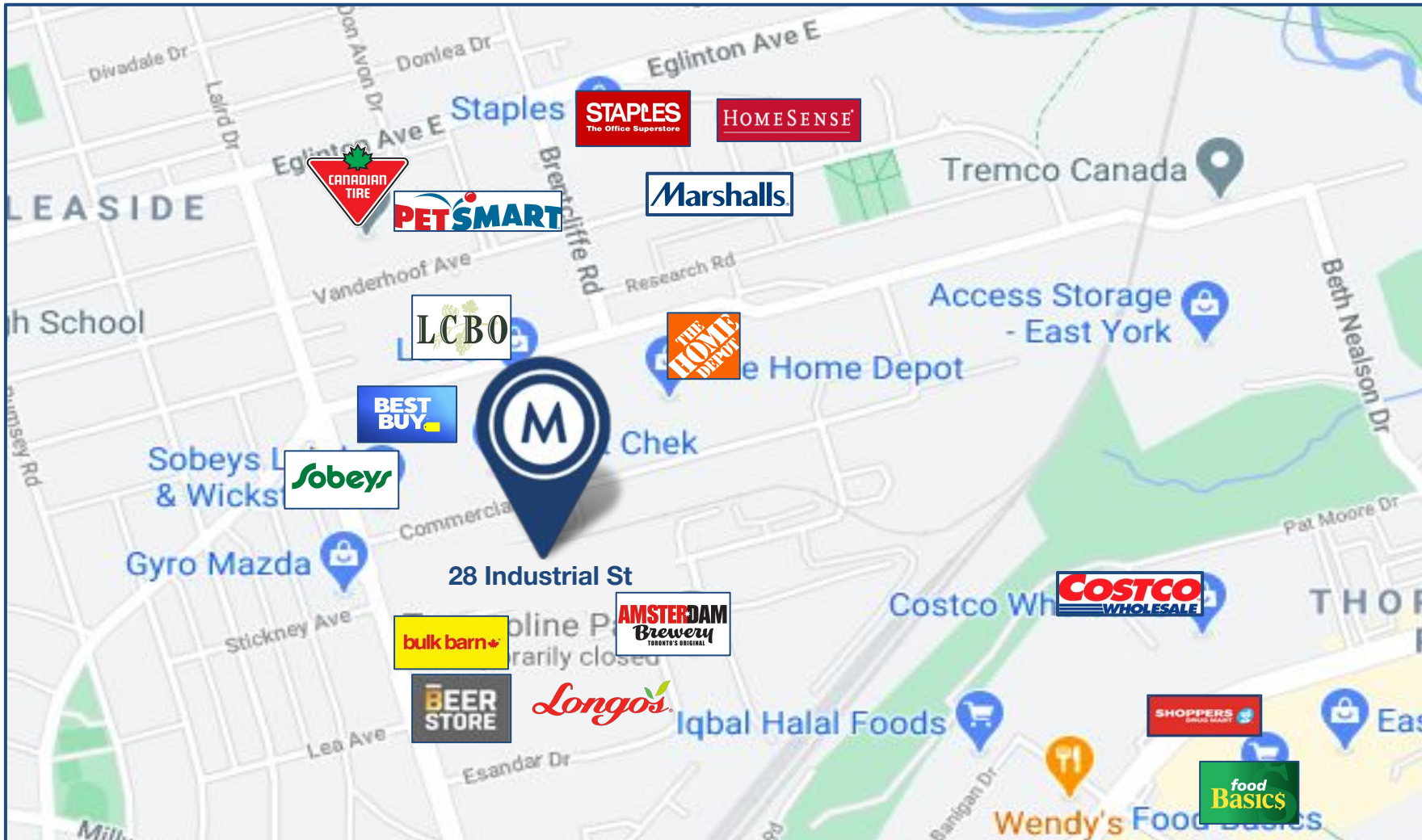


DETAILS

Area	Unit 103 - LEASED
	Unit 109 - LEASED
	Unit 111 - 900 SF (600 SF Ground Floor + 300 SF Loft)
	Unit 201 - LEASED
	Unit 210 - 900 SF
Monthly Gross Rent	Unit 103 - LEASED
	Unit 109 - LEASED
	Unit 111 - \$2,100
	Unit 201 - LEASED
	Unit 210 - \$2,100
Term	1-3 years
Possession	Contact Agents

PROPERTY OVERVIEW

- Bright, spacious, self-contained, air-conditioned, studio/office space
- Large, open work area, kitchenette, bathroom
- Large industrial style windows, providing Incredible amount of natural light
- 12 Foot Ceilings
- Onsite parking available
- TTC accessibility - roughly 20 minutes to Eglinton & Donlands Station via TTC busses.



AREA MAP

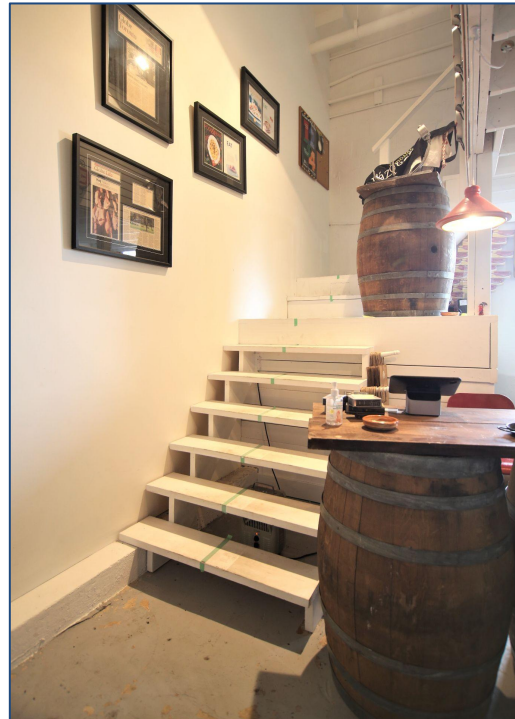
28 INDUSTRIAL STREET

Transit Score
74
Excellent Transit
Transit is convenient for most trips.

Walk Score
72
Very Walkable
Most errands can be accomplished on foot.



UNIT 111

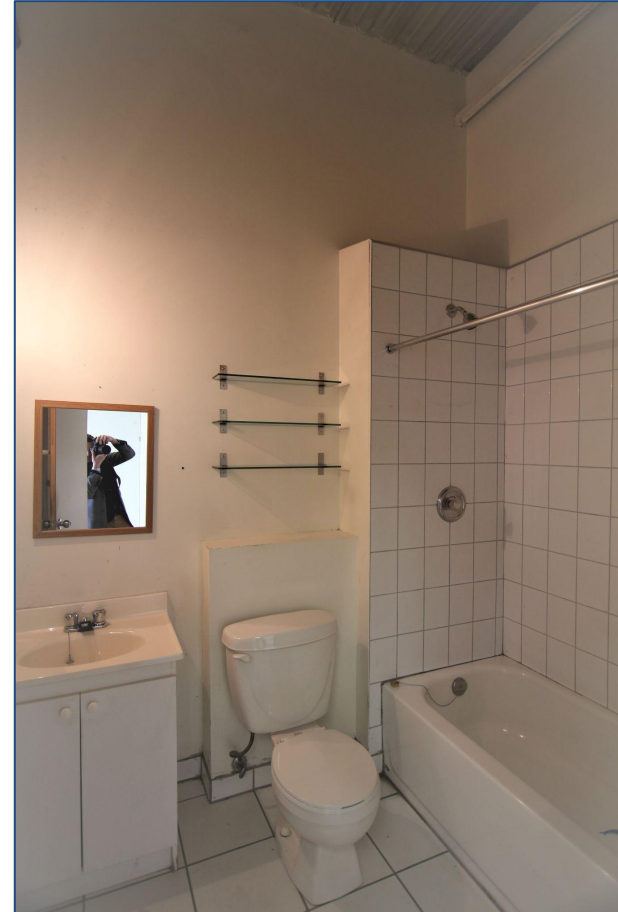


INTERIOR PHOTOS
28 INDUSTRIAL STREET



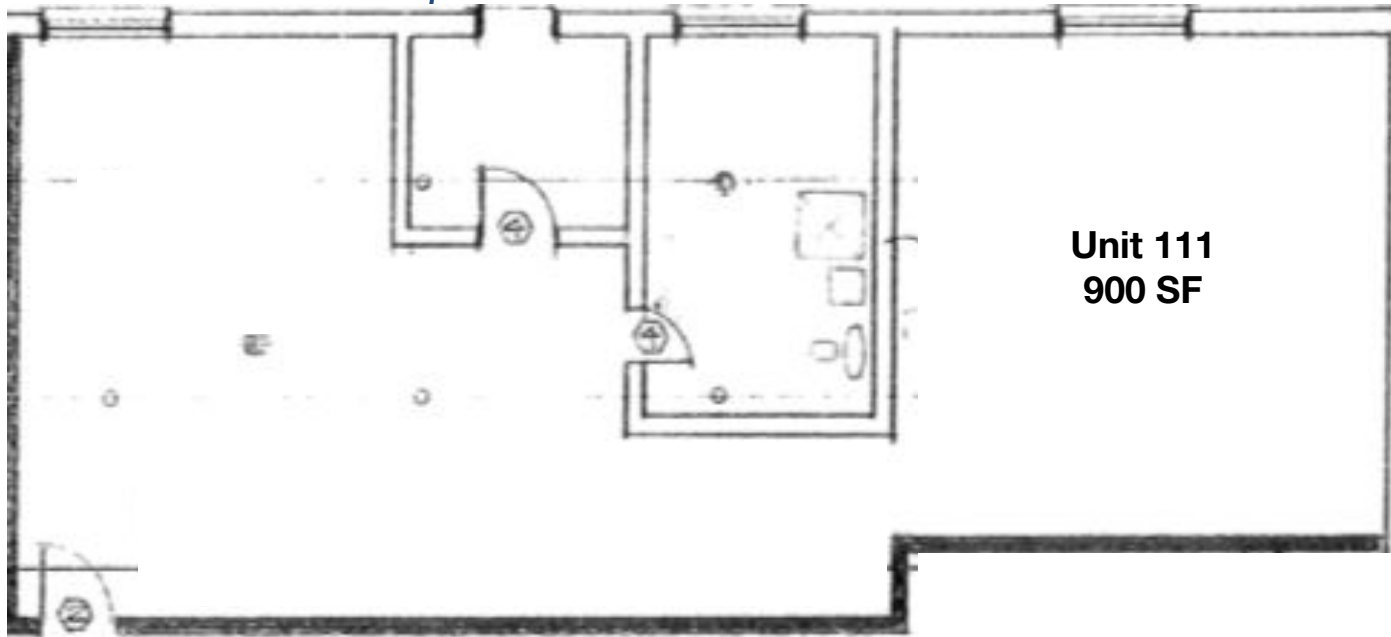
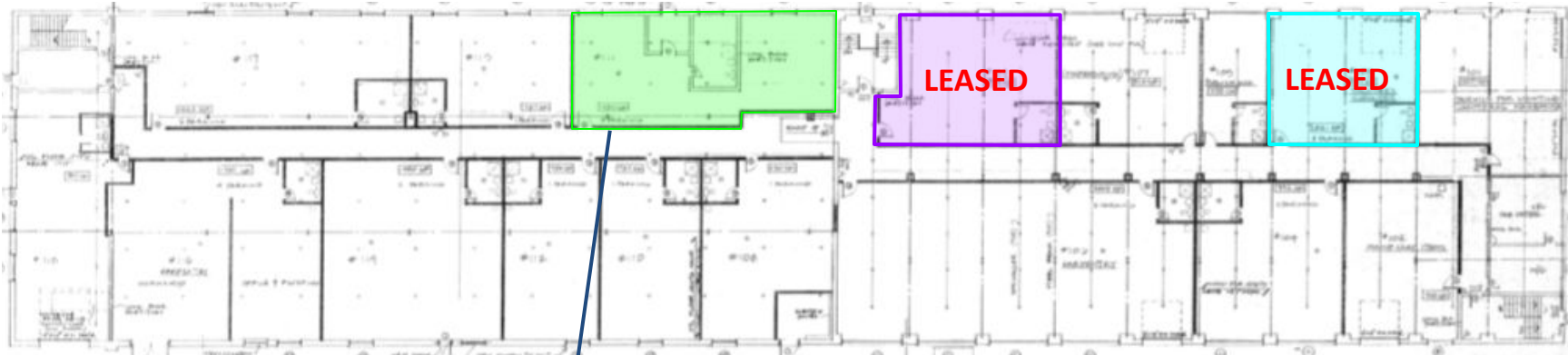


UNIT 210



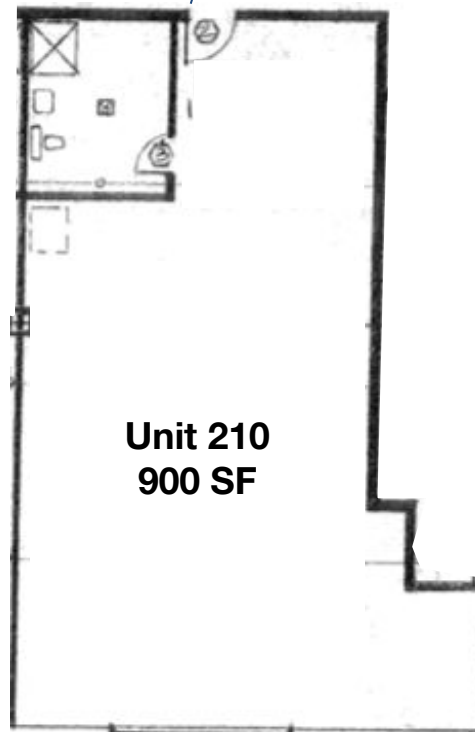


Ground Floor





Second Floor



**METROPOLITAN
COMMERCIAL**



**Built on
Connections.**

**626 King St West | Suite 302
Toronto, ON | M5V1M7**

416.703.6621

metcomrealty.com

CONTACT:

Tim Novak

Senior Vice President, Sales Representative

416.703.6621 x246

tim.novak@metcomrealty.com

Paul Kotyk

Senior Associate, Broker

416.703.6621 x245

paul.kotyk@metcomrealty.com