

FOR LEASE | STUDIO OFFICE SPACE

# 28 INDUSTRIAL STREET

EAST YORK, TORONTO, ON



METROPOLITAN  
COMMERCIAL





## DETAILS

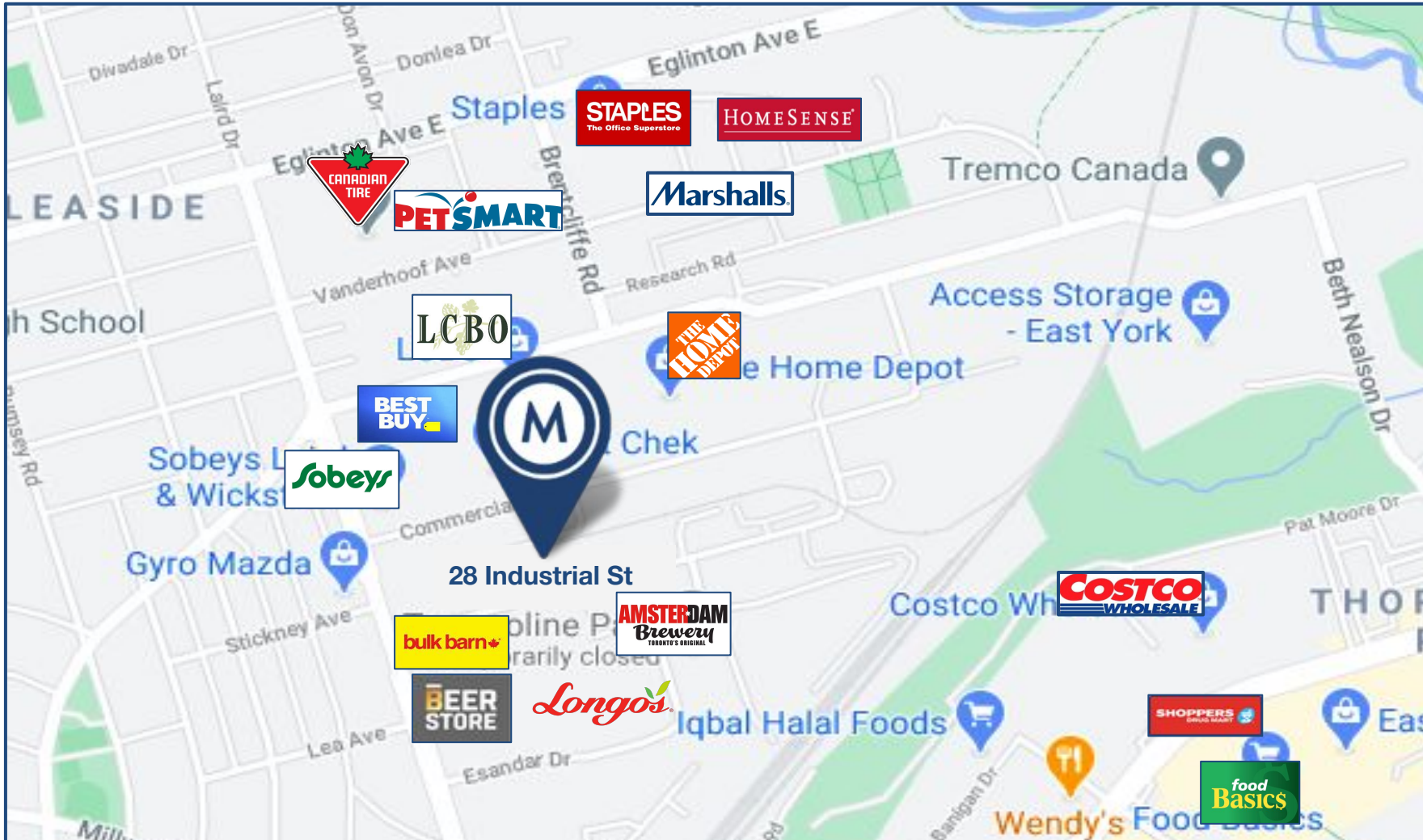
---

<b>LOCATION</b>	On Industrial Street, east of Laird Drive. <a href="#">Click here for map.</a>
<b>BUILDING DETAILS</b>	Unit 101 - 900 SF Unit 111 - 1,100 SF
<b>MONTHLY GROSS RENT</b>	Unit 101 - \$3,000 Unit 111 - \$2,400
<b>Term</b>	1-3 years
<b>Possession</b>	Contact Agents

## PROPERTY OVERVIEW

---

- Bright, spacious, self-contained, air-conditioned, studio/office space
- Large, open work area, kitchenette, bathroom
- Large industrial style windows, providing Incredible amount of natural light
- 12 Foot Ceilings, with a mezzanine
- Onsite parking available
- TTC accessibility - roughly 20 minutes to Eglinton & Donlands Station via TTC busses
- Unit 101 includes a roll up loading door



# AREA MAP

28 INDUSTRIAL STREET

**Transit Score**  
**74**  
**Excellent Transit**  
Transit is convenient for most trips.

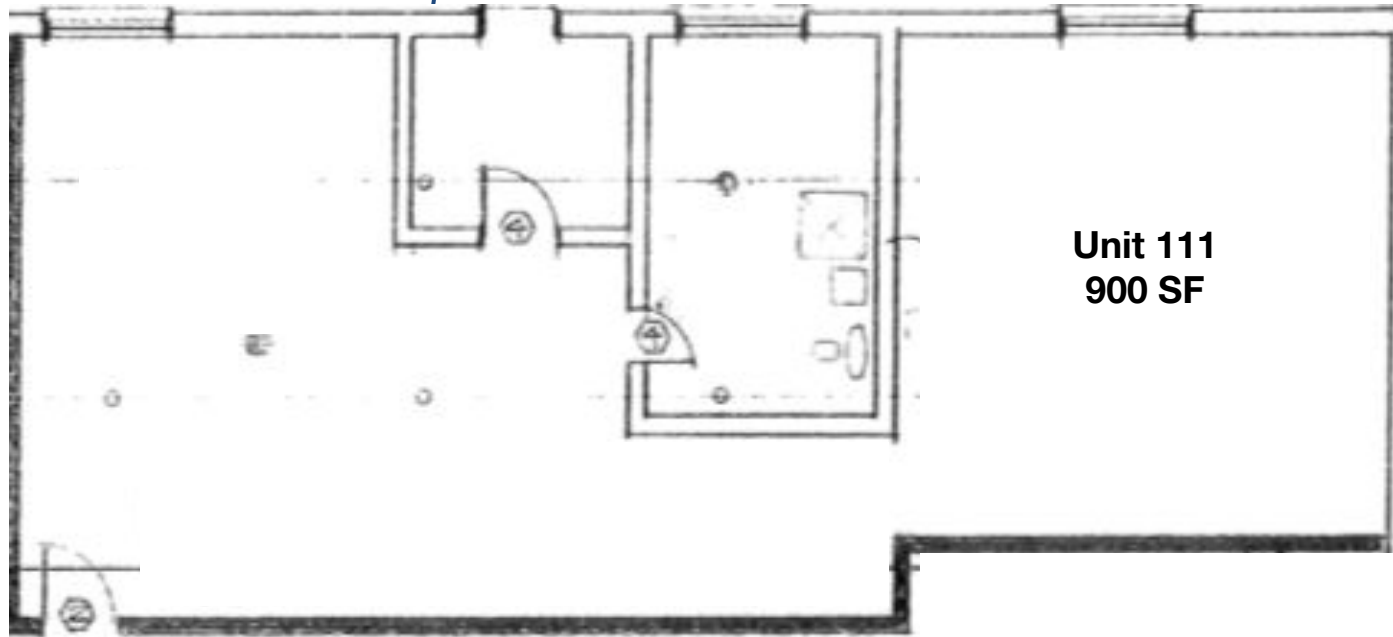
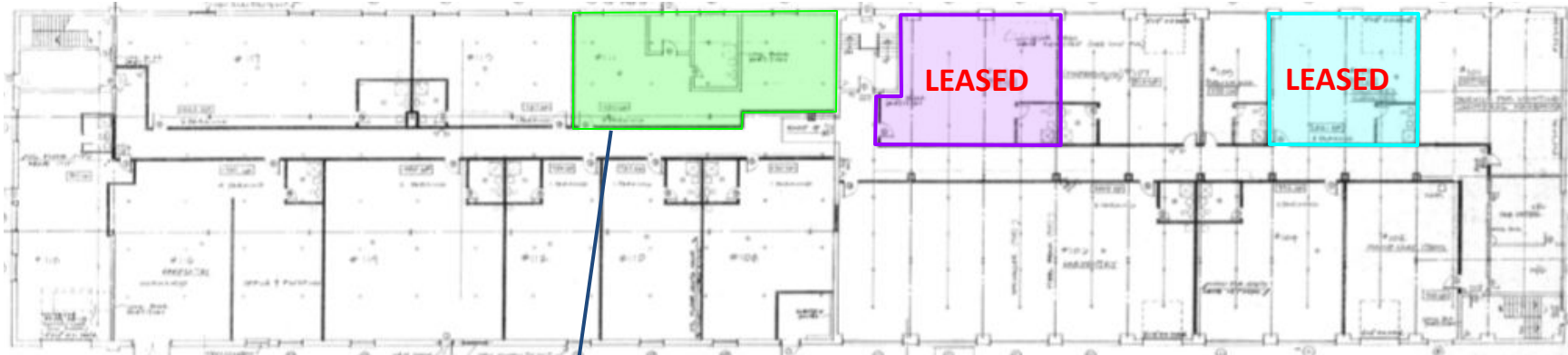
**Walk Score**  
**72**  
**Very Walkable**  
Most errands can be accomplished on foot.



**INTERIOR PHOTOS**  
28 INDUSTRIAL STREET



## Ground Floor





**METROPOLITAN  
COMMERCIAL**

**TIM NOVAK**

Senior Vice President,  
Sales Representative

416.703.6621 x 246

[tim.novak@metcomrealty.com](mailto:tim.novak@metcomrealty.com)

150 BEVERLEY STREET, UNIT 1

TORONTO, ON | M5T 1Y5

416.703.6621

[WWW.METCOMREALTY.COM](http://WWW.METCOMREALTY.COM)

The information contained herein has been gathered from sources deemed reliable. However, Metropolitan Commercial Realty Inc., Brokerage, its agents, or employees make no representations or warranties on the accuracy of said information. Prospective tenants and their agents are advised to independently verify any information provided herein.

Metropolitan Commercial Realty Inc., Brokerage