

FOR LEASE | STUDIO OFFICE SPACE

28 INDUSTRIAL STREET

EAST YORK, TORONTO, ON



METROPOLITAN
COMMERCIAL



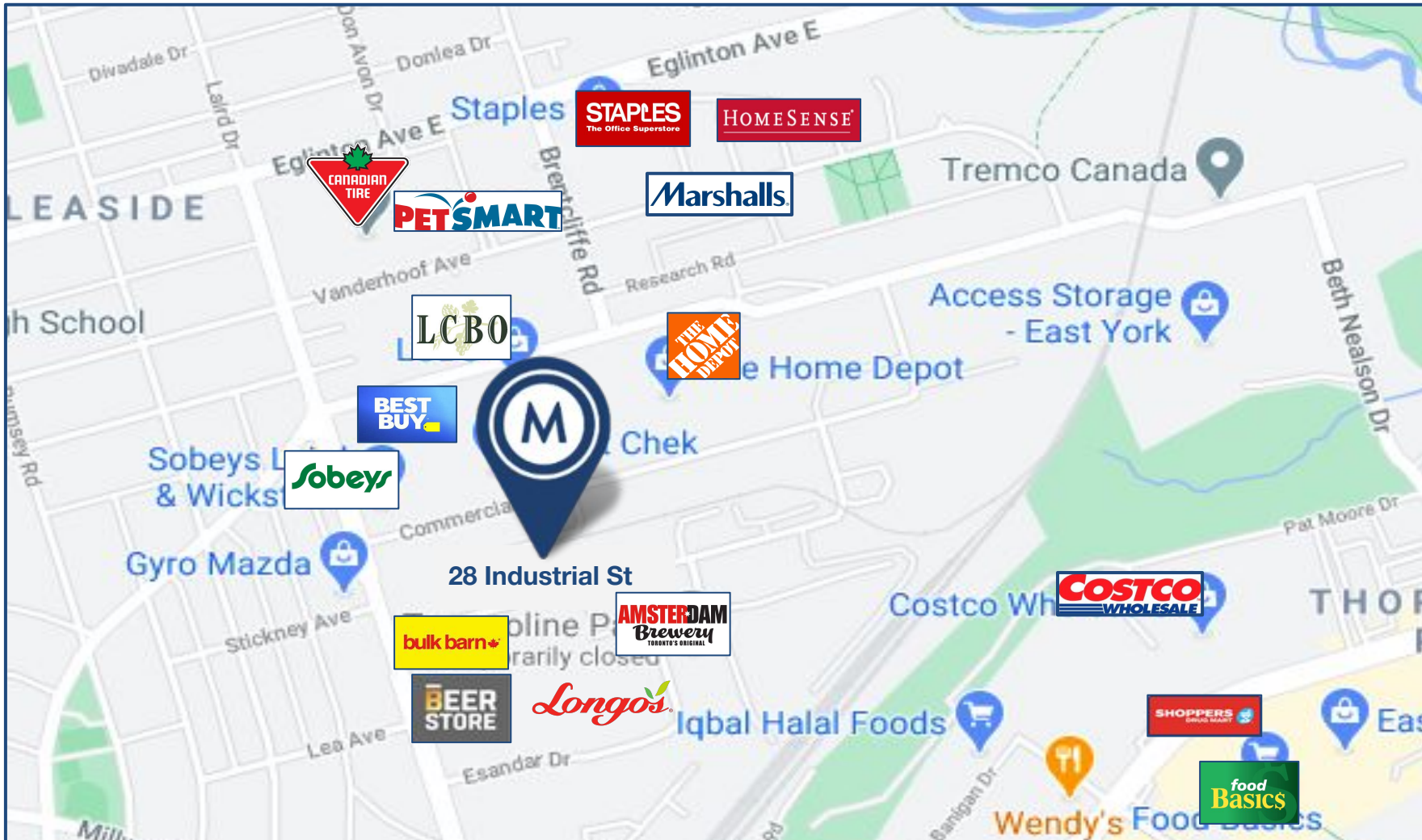


DETAILS

LOCATION	On Industrial Street, east of Laird Drive. Click here for map.
BUILDING DETAILS	Unit 111 - 1,100 SF
MONTHLY GROSS RENT	Unit 111 - \$2,400
Term	1-3 years
Possession	Contact Agents

PROPERTY OVERVIEW

- Bright, spacious, self-contained, air-conditioned, studio/office space
- Large, open work area, kitchenette, bathroom
- Large industrial style windows, providing Incredible amount of natural light
- 12 Foot Ceilings, with a mezzanine.
- Onsite parking available
- TTC accessibility - roughly 20 minutes to Eglinton & Donlands Station via TTC busses.



AREA MAP

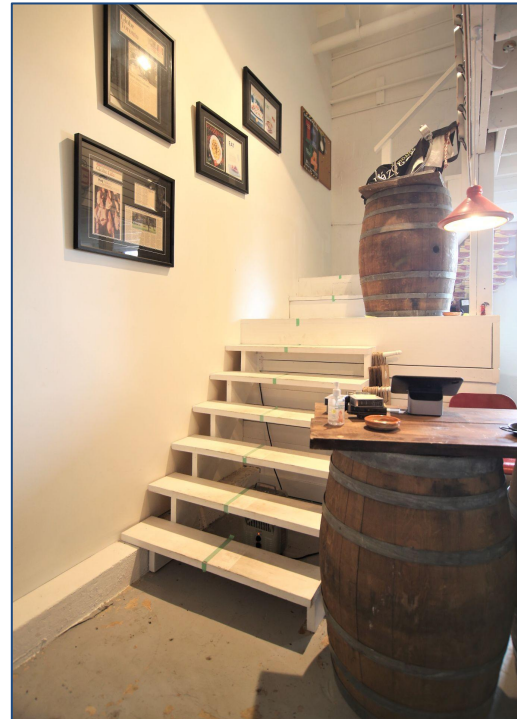
28 INDUSTRIAL STREET

Transit Score
74
Excellent Transit
Transit is convenient for most trips.

Walk Score
72
Very Walkable
Most errands can be accomplished on foot.

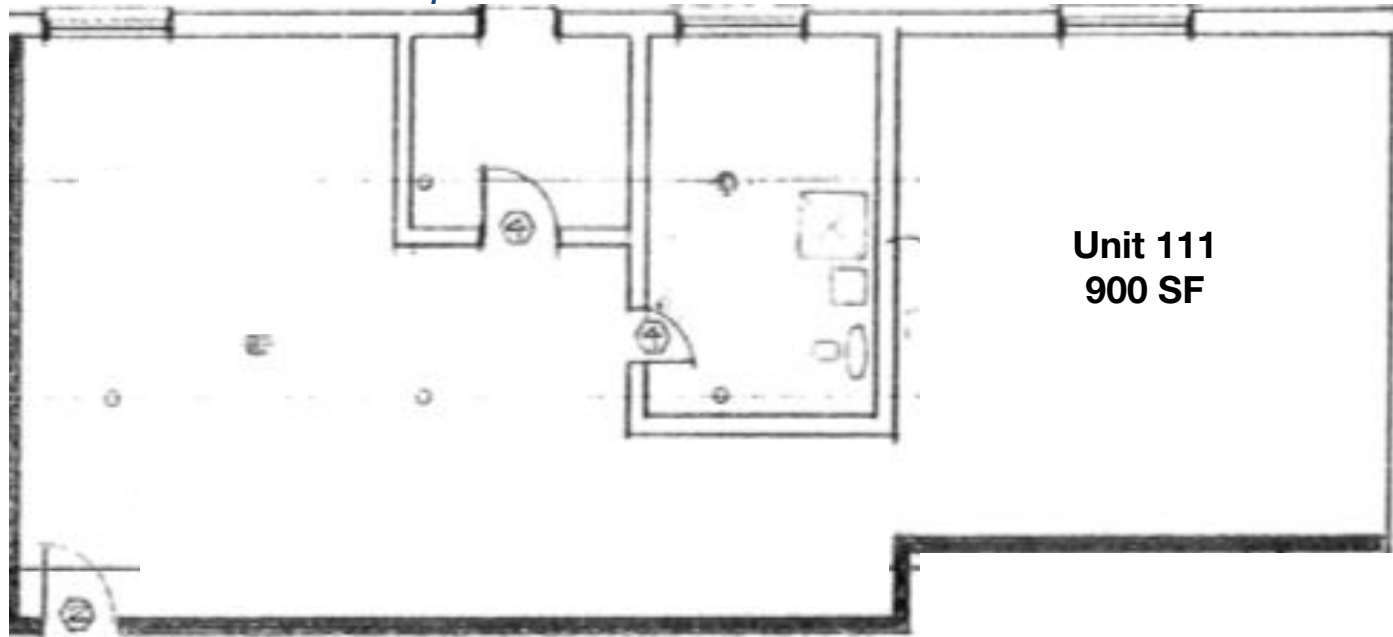
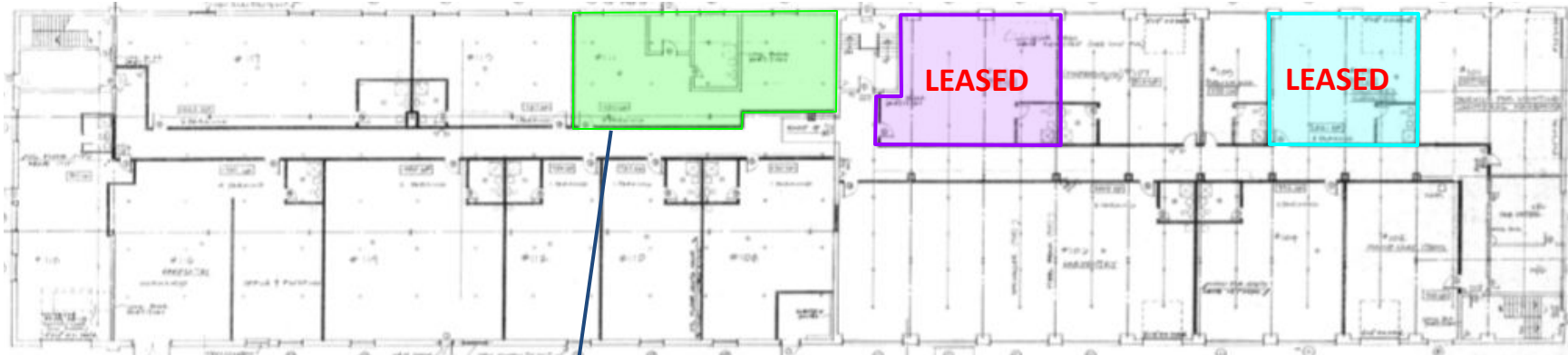


UNIT 111





Ground Floor





**METROPOLITAN
COMMERCIAL**

TIM NOVAK

Senior Vice President,
Sales Representative

416.703.6621 x 246

tim.novak@metcomrealty.com

PAUL KOTYK

Senior Associate,
Broker

416.703.6621 x 245

paul.kotyk@metcomrealty.com

150 BEVERLEY STREET, UNIT 1

TORONTO, ON | M5T 1Y5

416.703.6621

WWW.METCOMREALTY.COM

The information contained herein has been gathered from sources deemed reliable. However, Metropolitan Commercial Realty Inc., Brokerage, its agents, or employees make no representations or warranties on the accuracy of said information. Prospective tenants and their agents are advised to independently verify any information provided herein.

Metropolitan Commercial Realty Inc., Brokerage