

FOR LEASE | STUDIO OFFICE SPACE

28 INDUSTRIAL STREET

EAST YORK, TORONTO, ON



METROPOLITAN
COMMERCIAL



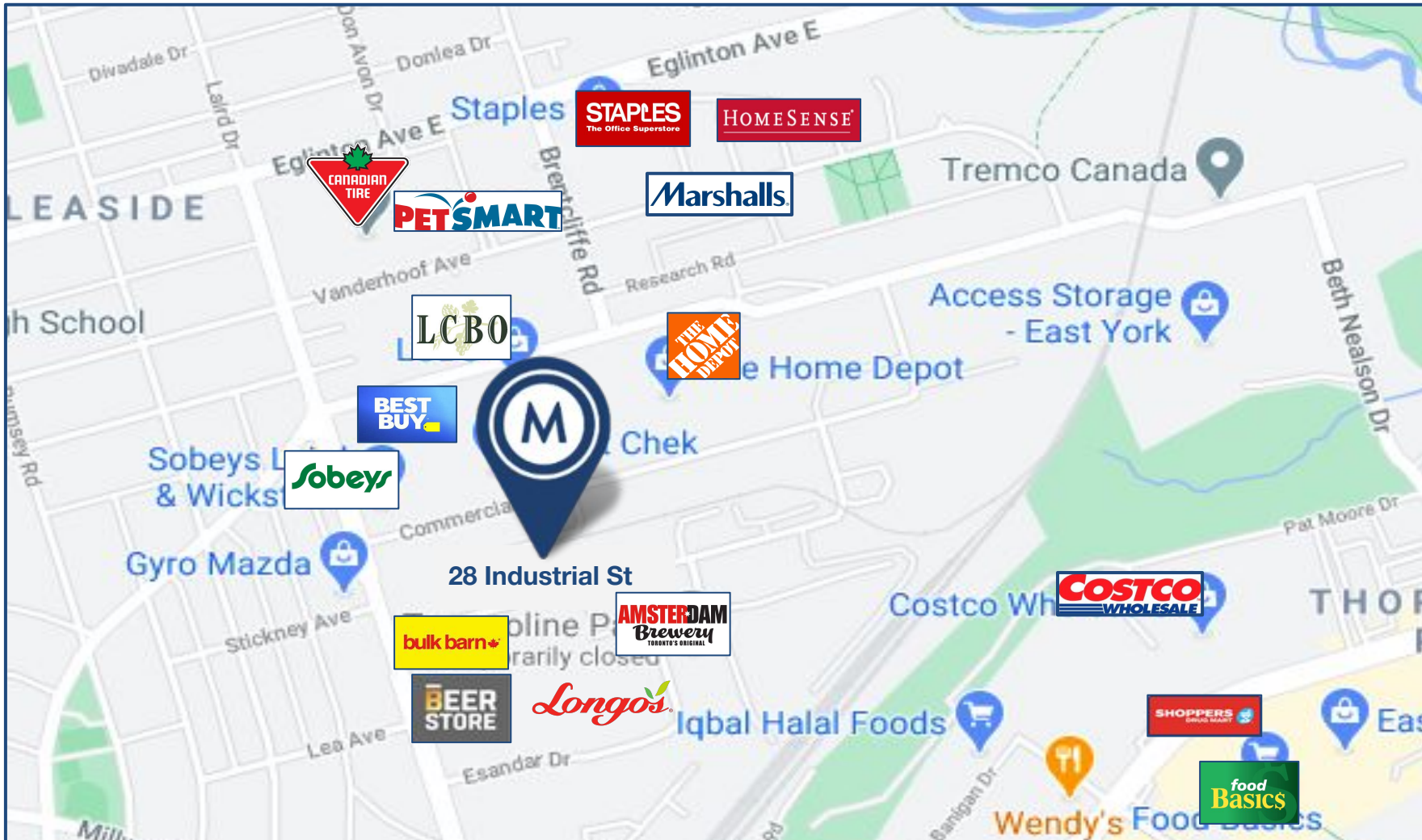
DETAILS

Area	Unit 100	-	400 SF
	Unit 210	-	900 SF
	Unit 212	-	850 SF
	Unit 216	-	850 SF
	Unit 218	-	850 SF
Monthly Gross Rent	Unit 100	-	\$1,100
	Unit 210	-	\$2,600
	Unit 212	-	\$2,450
	Unit 216	-	\$2,450
	Unit 218	-	\$2,450
Term	1-3 years		
Possession	Contact Agents		

PROPERTY OVERVIEW

- Bright, spacious, self-contained, air-conditioned, studio/office space
- Large, open work area, kitchenette, bathroom
- Large industrial style windows, providing Incredible amount of natural light
- 12 Foot Ceilings
- Onsite parking available
- TTC accessibility - roughly 20 minutes to Eglinton & Donlands Station via TTC busses.





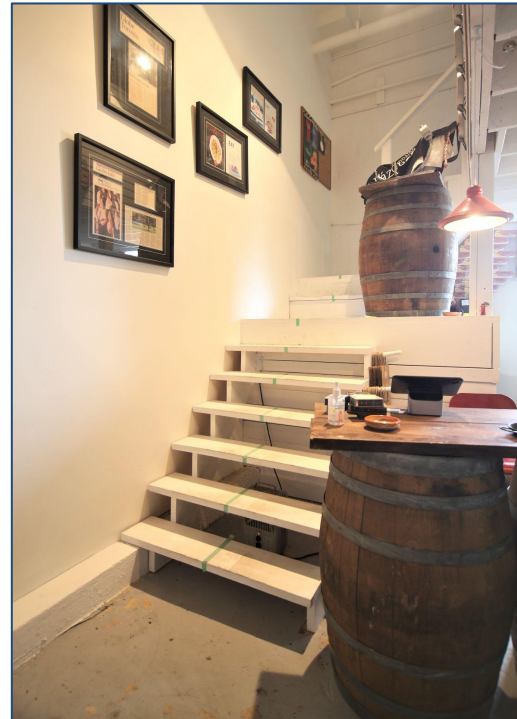
AREA MAP
28 INDUSTRIAL STREET

Transit Score
74
Excellent Transit
Transit is convenient for most trips.

Walk Score
72
Very Walkable
Most errands can be accomplished on foot.

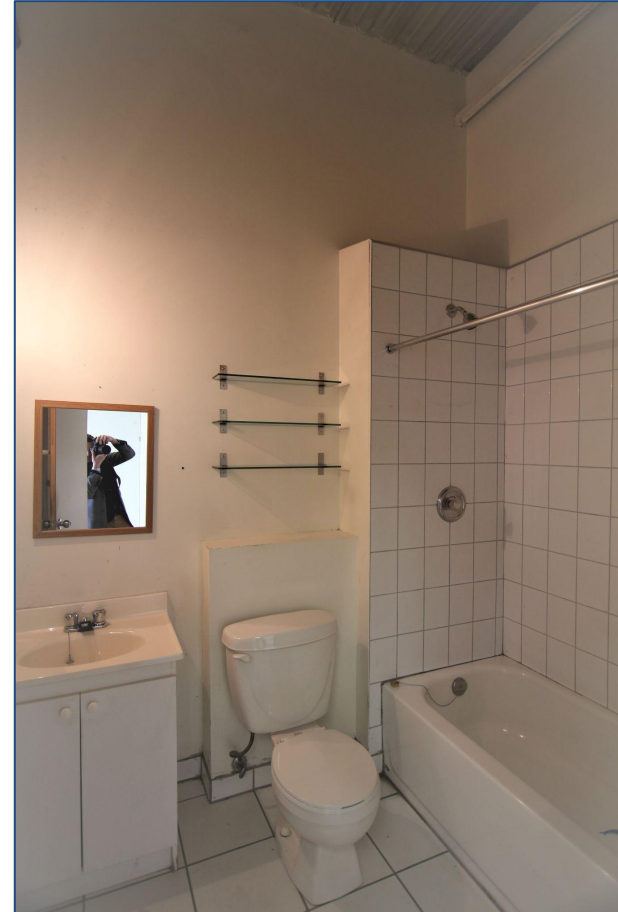


UNIT 111



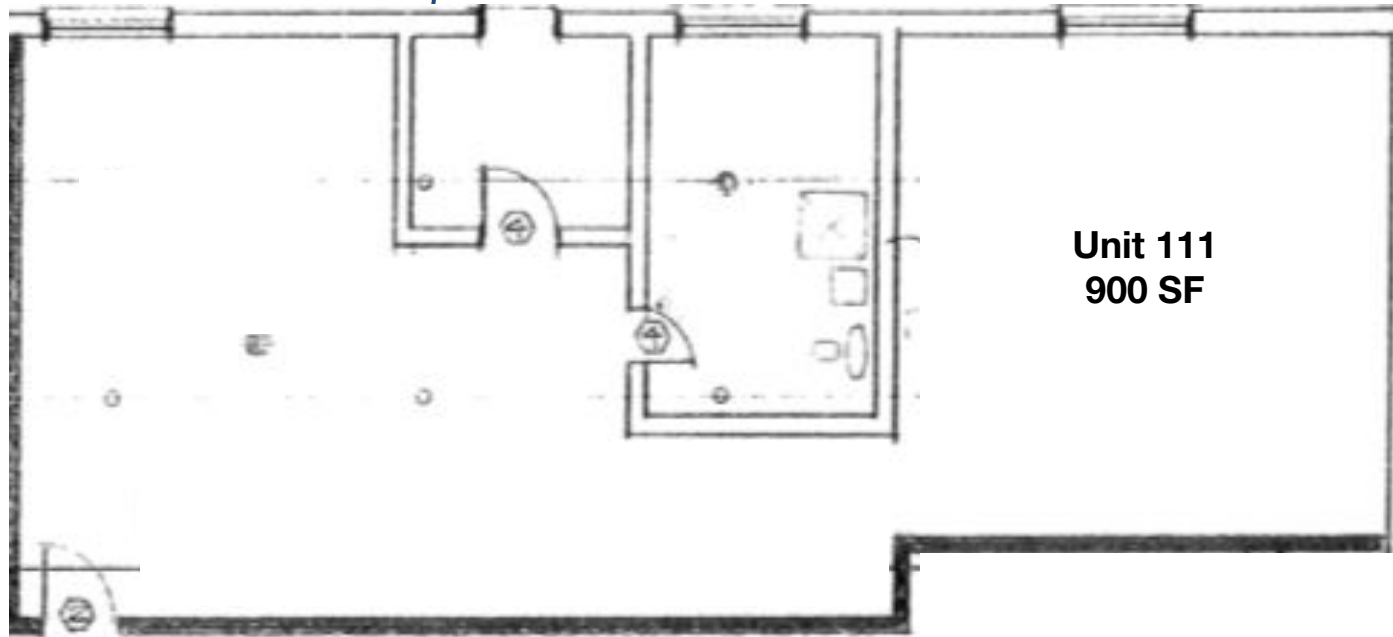
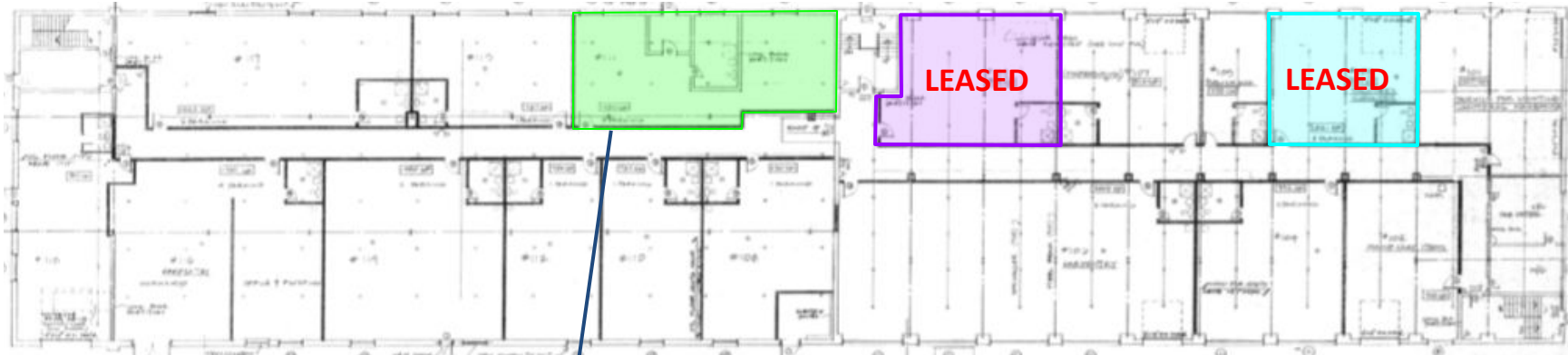


UNIT 210



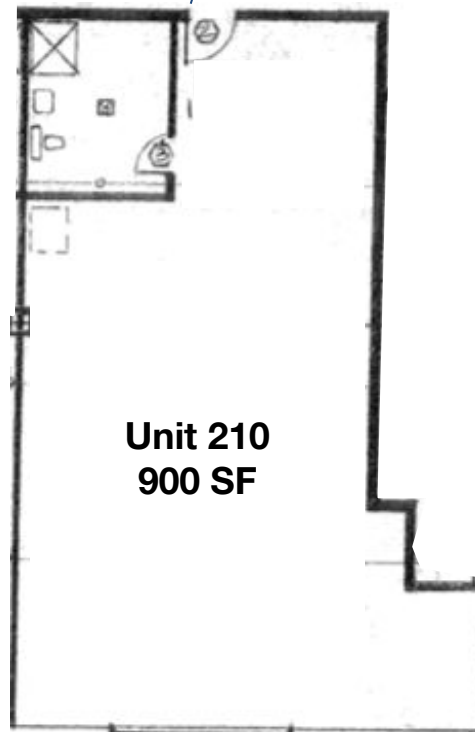


Ground Floor





Second Floor



**METROPOLITAN
COMMERCIAL**



**Built on
Connections.**

626 King St West | Suite 302
Toronto, ON | M5V1M7

416.703.6621

metcomrealty.com

CONTACT:

Tim Novak

Senior Vice President, Sales Representative

416.703.6621 x246

tim.novak@metcomrealty.com

Paul Kotyk

Senior Associate, Broker

416.703.6621 x245

paul.kotyk@metcomrealty.com