

FOR LEASE | STUDIO OFFICE SPACE

28 INDUSTRIAL STREET

EAST YORK, TORONTO, ON



METROPOLITAN
COMMERCIAL





DETAILS

LOCATION	On Industrial Street, east of Laird Drive. Click here for map.
BUILDING DETAILS	Unit 103 - 1,200 SF Unit 111 - 1,100 SF
MONTHLY GROSS RENT	Unit 103 - \$3,400 Unit 111 - \$2,400
Term	1-3 years
Possession	Contact Agents

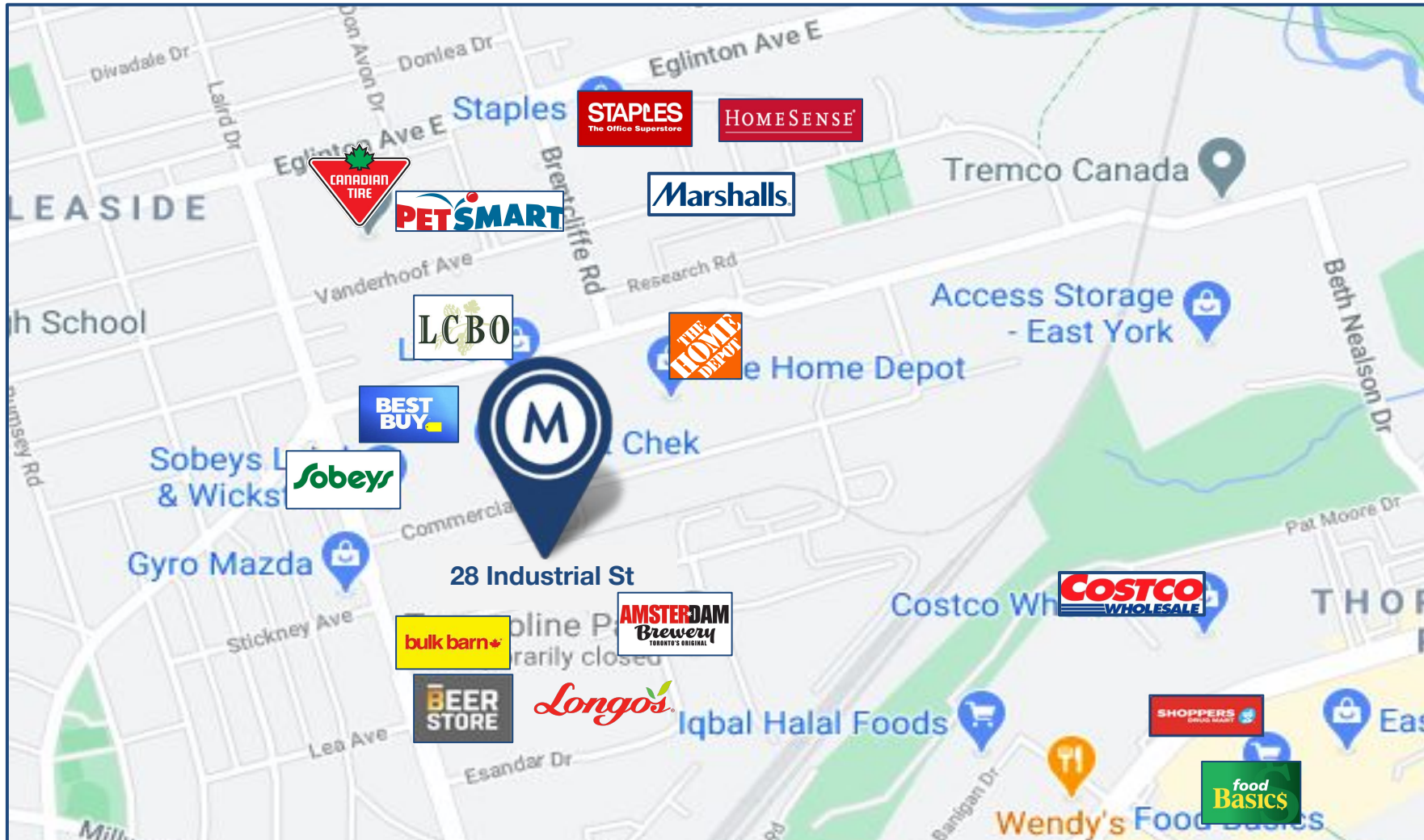
PROPERTY OVERVIEW

- Bright, spacious, self-contained, air-conditioned, studio/office space
- Large, open work area, kitchenette, bathroom
- Large industrial style windows, providing Incredible amount of natural light
- 12 Foot Ceilings, with a mezzanine.
- Onsite parking available
- TTC accessibility - roughly 20 minutes to Eglinton & Donlands Station via TTC busses.



AREA MAP

28 INDUSTRIAL STREET



Excellent Transit

Transit is convenient for most trips.



Very Walkable

Most errands can be accomplished on foot.

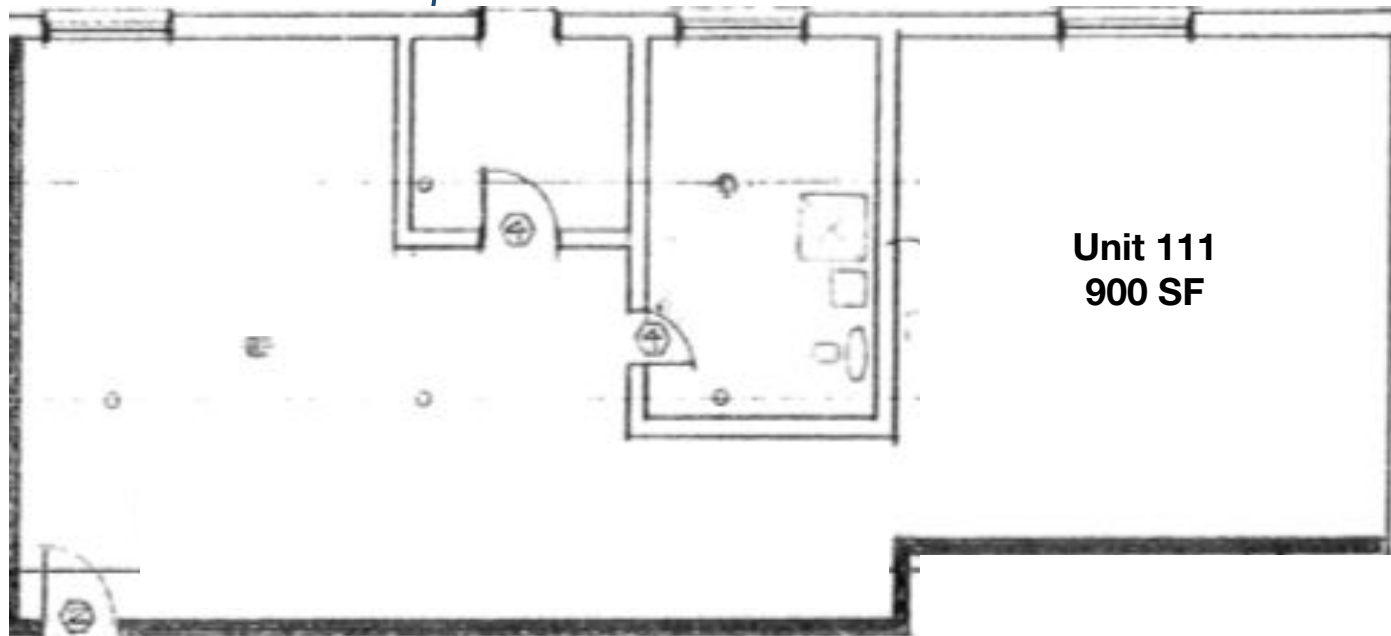
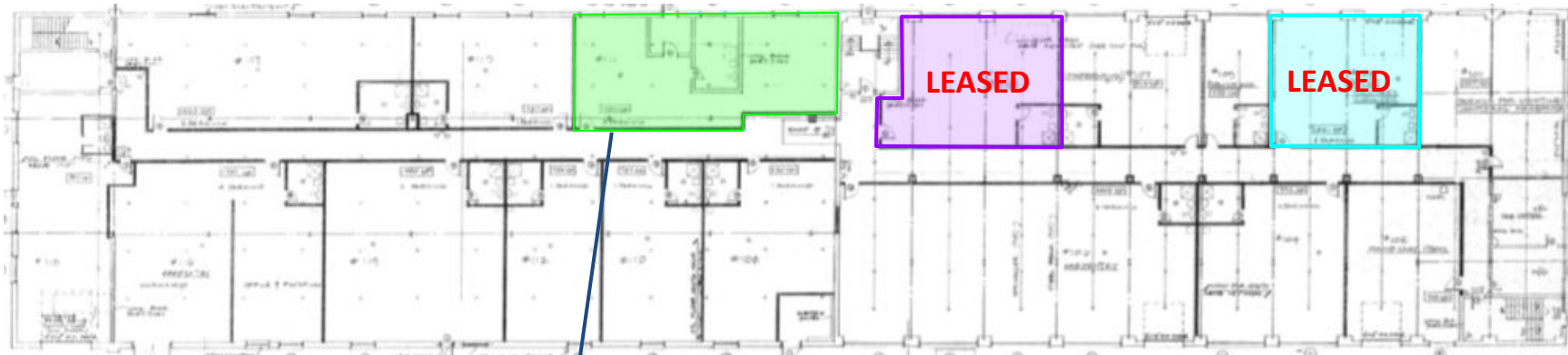


INTERIOR PHOTOS

28 INDUSTRIAL STREET



Ground Floor



FLOOR PLAN
28 INDUSTRIAL STREET



**METROPOLITAN
COMMERCIAL**

TIM NOVAK

Senior Vice President,
Sales Representative

416.703.6621 x 246

tim.novak@metcomrealty.com

PAUL KOTYK

Senior Associate,
Broker

416.703.6621 x 245

paul.kotyk@metcomrealty.com

150 BEVERLEY STREET, UNIT 1

TORONTO, ON | M5T 1Y5

416.703.6621

WWW.METCOMREALTY.COM

The information contained herein has been gathered from sources deemed reliable. However, Metropolitan Commercial Realty Inc., Brokerage, its agents, or employees make no representations or warranties on the accuracy of said information. Prospective tenants and their agents are advised to independently verify any information provided herein.

Metropolitan Commercial Realty Inc., Brokerage