

FOR LEASE | STUDIO OFFICE | SOUTH BUILDING

35 GOLDEN AVENUE

TORONTO | ON



METROPOLITAN
COMMERCIAL





DETAILS

Location	Top of Golden Avenue near Dundas St W and Bloor St W. Click Here for Map
Building Details	Unit 114 - 1,339 SF
Rental Rate	\$4,600/Month
Additional Rent	Base year increases plus hydro
Term	1-3 years
Possession	April 1st 2024
Parking	Limited on-site parking (2 parking space - \$79 per space/month)

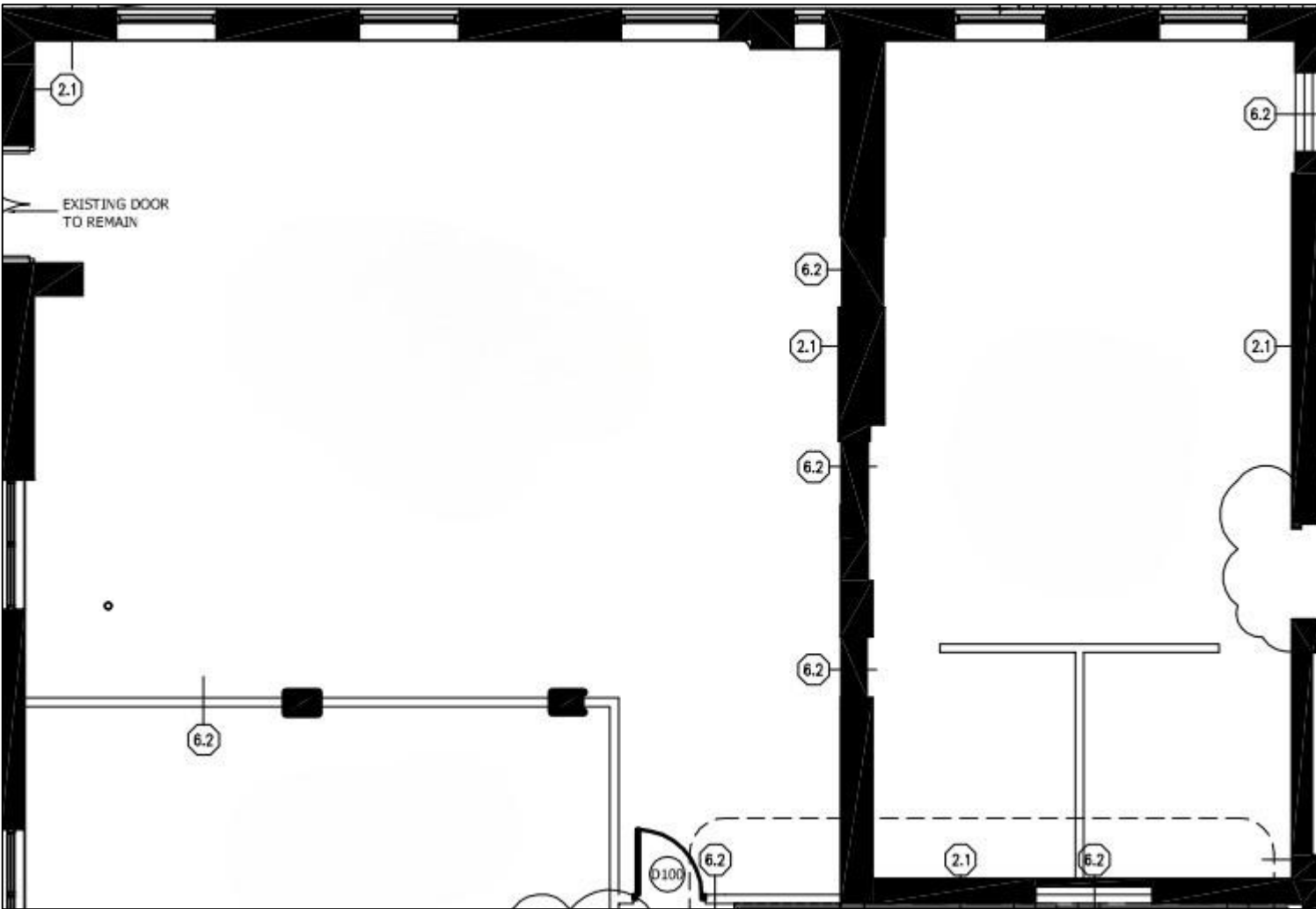
FEATURES

- Studio office space.
- Main floor with concrete floors, 12ft ceilings, wood-mill construction and open area.
- Steps to Dundas West TTC subway station
- Abundant natural light.
- Direct street access/entrance.

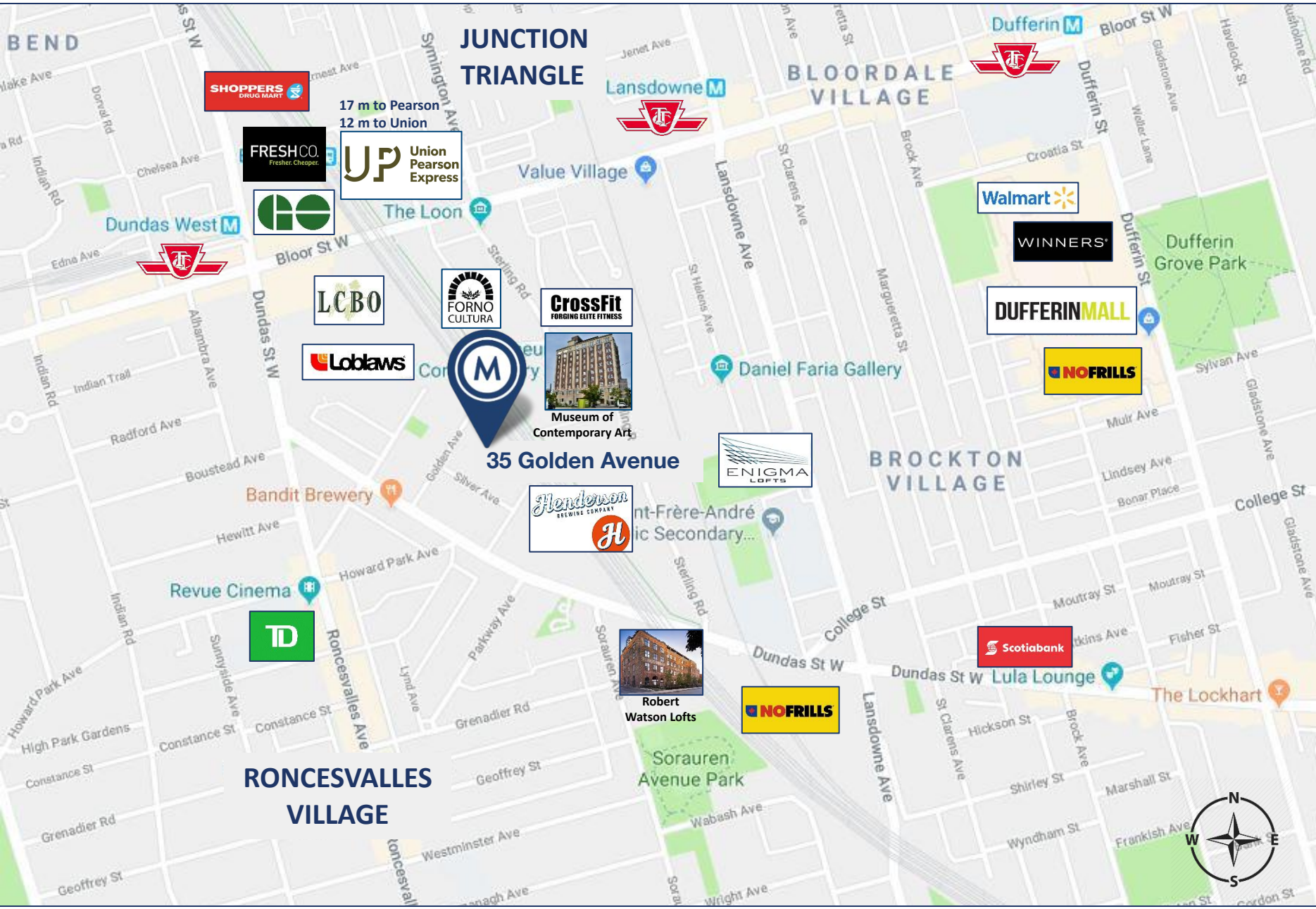


BUILDING PHOTOS





FLOOR PLAN



AREA MAP

35 GOLDEN AVENUE | FOR LEASE



METROPOLITAN COMMERCIAL

150 Beverley Street, Unit 1
Toronto, ON
M5T 1Y5

www.metcomrealty.com

CONTACT:

TIM NOVAK*
Senior Vice President
416.703.6621 ext. 246
tim.novak@metcomrealty.com