

SHORT TERM LEASE OPPORTUNITY

20 TOWNS ROAD

INDUSTRIAL FACILITY



METROPOLITAN
COMMERCIAL

PROPERTY DETAILS

180,000 SF industrial facility consisting of three floors of 60,000 square feet each. Divisible to 15,000 SF to 160,000 SF.

- 21 foot clear ceiling height and 20ft by 20ft bay sizes.
- Each floor serviced by freight elevator.
- 4 truck-level shipping doors.
- F1 rated fireproof concrete building with large floor load and high level of security.
- Fully sprinklered throughout.
- The buildings location is near the corner of Kipling and Horner Ave and close to major highways and public transit including easy access to HWY 427 and the QEW.

LOCATION

South of Horner Ave and West of Kipling Ave, on Towns Road.

CLICK FOR MAP

BUILDING DETAILS

15,000-160,000 SF

NET RENTAL RATE

\$10.00 PSF/YR (Shorter terms rental rate to be negotiated)

ADDITIONAL RENT

\$3.48 + Hydro & Gas

TERM

Short Term

ELECTRICAL

800 amps, 600 volt

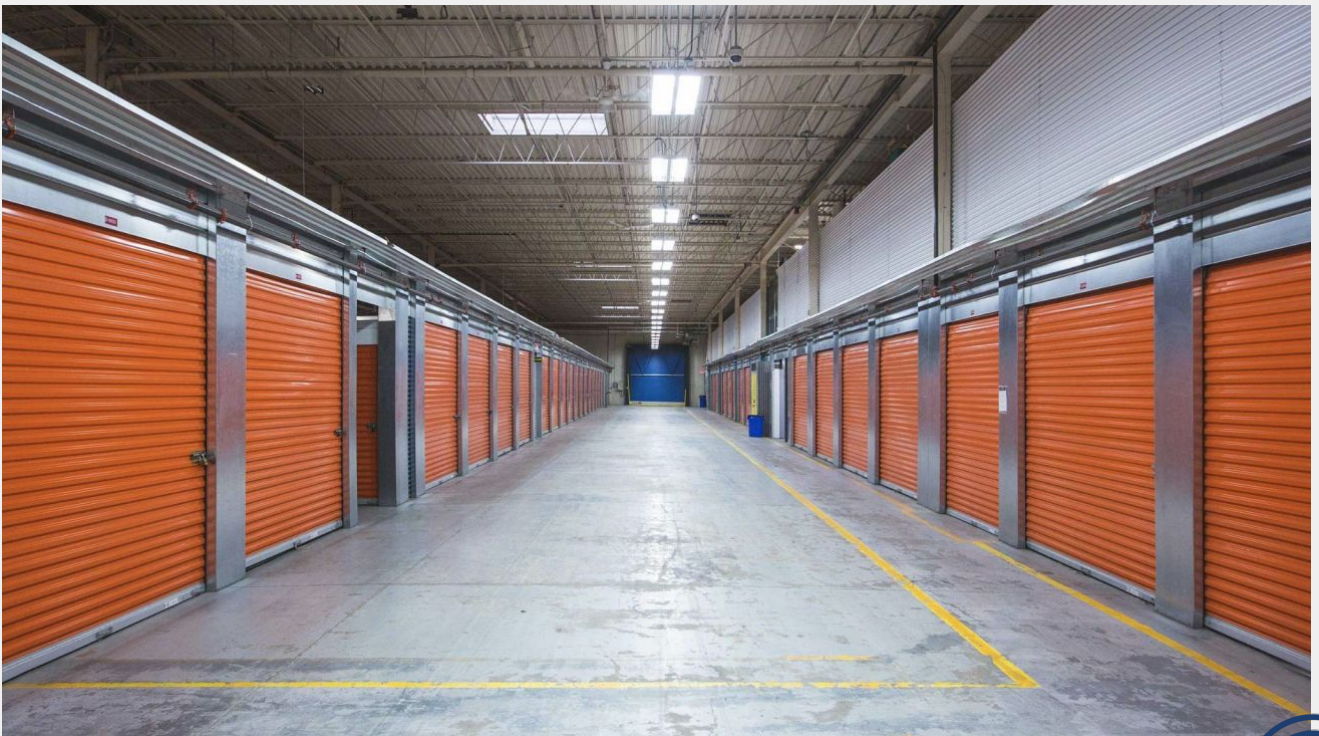
POSSESSION

Immediate

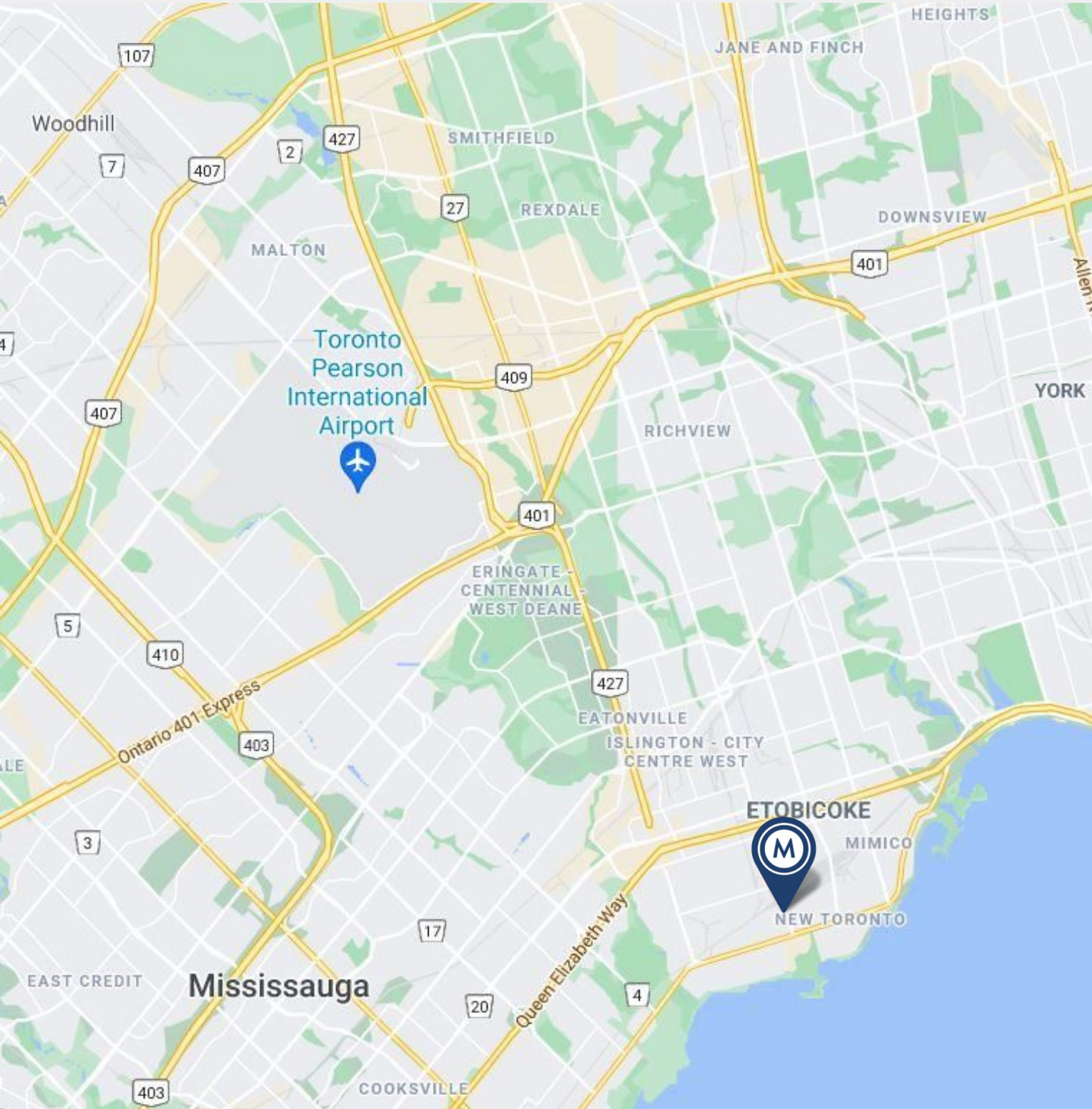


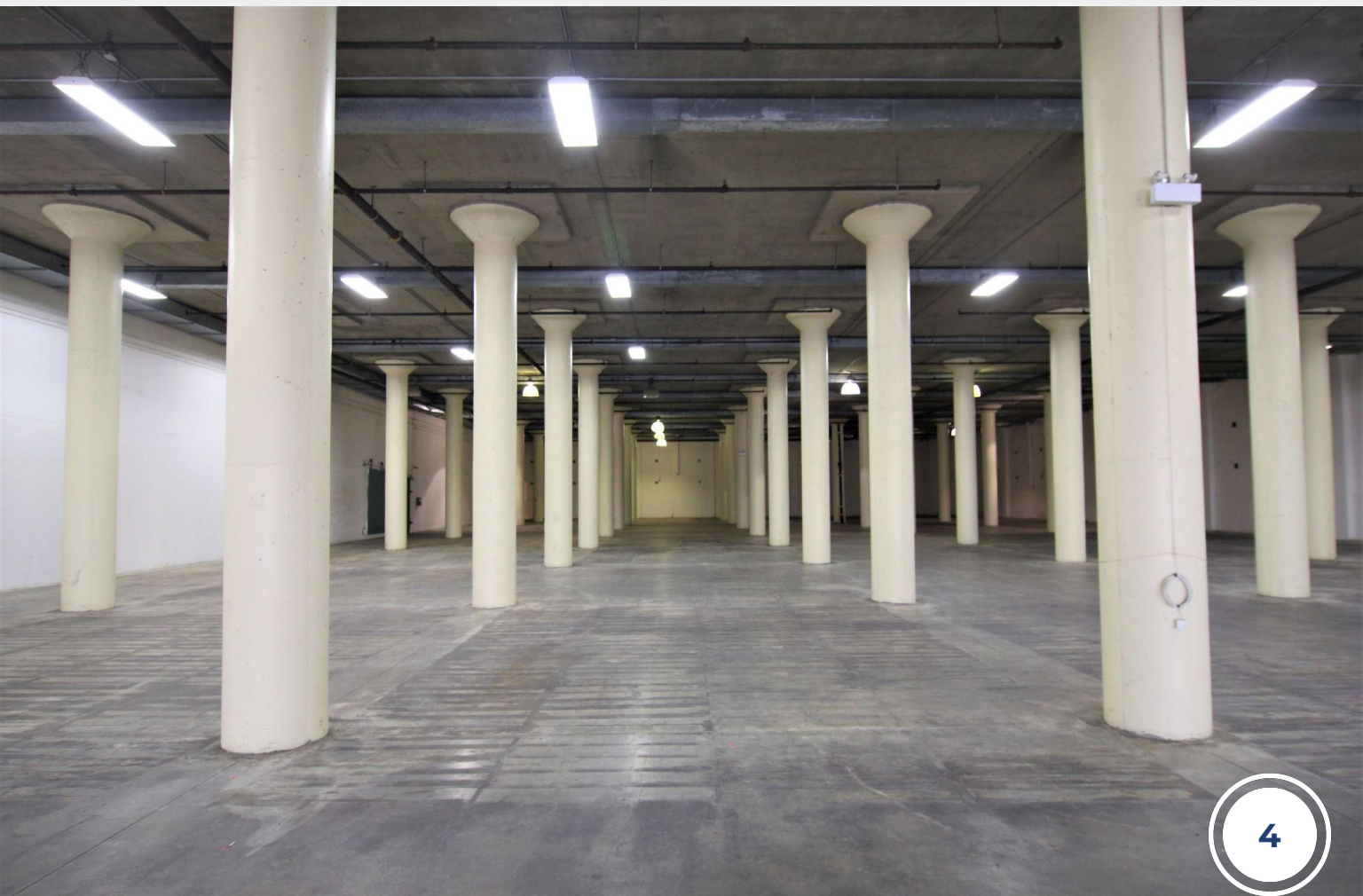
POTENTIAL SHORT TERM USES

- Oversized storage and/or high end storage given security of building
- Clean Manufacturing
- High-end Auction Space or Showroom
- Short term warehouse space
- Movie or Television Production Studio or Ancillary Production Uses (workshop, wardrobe office)
- Reality Games Space
- Art Gallery / Exhibition Space / Event Space
- Artist / Sculptor / Photography Studio



AREA MAP





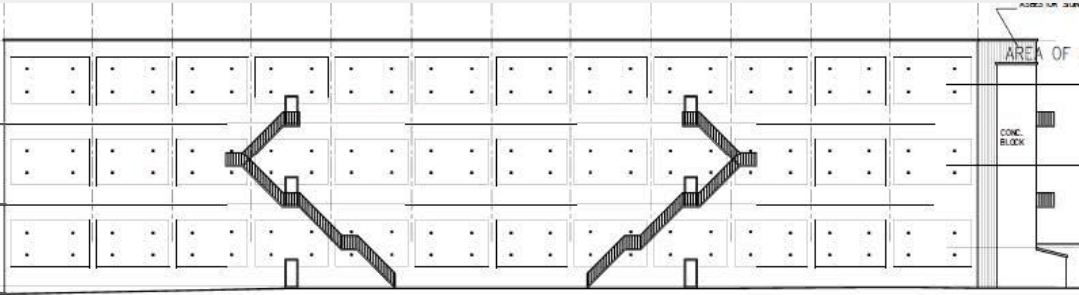
PROPERTY DETAILS

CLEAR HEIGHT

3RD FLOOR - 21'

2ND FLOOR - 21'

1ST FLOOR - 21'



20 TOWNS RD



**METROPOLITAN
COMMERCIAL**

PAUL KOTYK

Senior Associate,

Broker

416.890.0324

paul.kotyk@metcomrealty.com

TIM NOVAK

Senior Vice President,

Sales Representative

416.889.7100

tim.novak@metcomrealty.com