

FOR LEASE

**272 RICHMOND ST E
TURNKEY OFFICE SPACE**



**METROPOLITAN
COMMERCIAL**

DETAILS



LOCATION

On Richmond Street East, West of Sherbourne Street.

BUILDING DETAILS

Second Floor: 5,250 SF
Third Floor: 5,250 SF

Total Area: 10,500 SF

RENTAL RATE

Please Contact Agent to Discuss

ADDITIONAL RENT

Hydro and In-Suite Janitorial

TERM

Open

POSSESSION

Immediate

COMMISSION

\$1.00 PSF/YR

FEATURES

- Stunning turnkey modern brick and beam office space contiguous over 2 levels. Divisible for Single Floor - 5,250 SF.
- Numerous private offices with glass doors/walls, with several open concept workstation space.
- Large main boardroom/presentation room, 3 large boardrooms and meeting rooms.
- Dynamic large eat-in kitchen area with all existing appliances.
- Washrooms on both levels including one shower.
- All existing furniture available for tenants use.
- Two car parking in laneway included in rent with option for additional spaces.
- Floors can be leased separately.
- Minutes to Gardiner/DVP, 10 minute walk to Yonge Subway, steps to Queen/King streetcar



CONNECTIVITY



BIKE SCORE OF 98

- Ample bike storage
- Multiple Toronto Bike Share stations available



TRANSIT SCORE OF 100

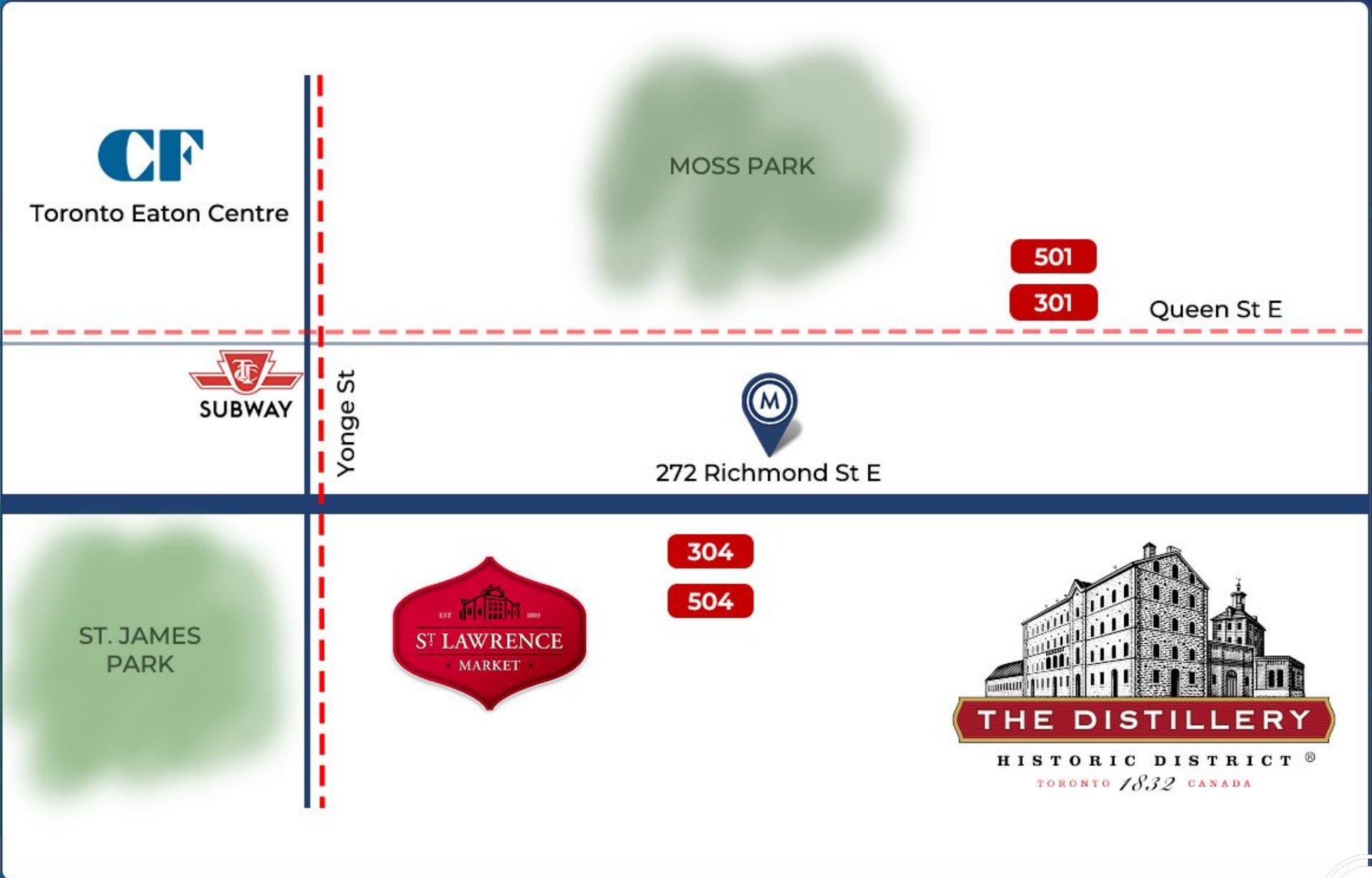
- A ten minute walk to Queen subway station
- Three minute walk to Queen streetcars (301 and 501)



WALK SCORE OF 95

- Located in a pedestrian-friendly area within walking distance of downtown amenities, transit, parking, shopping and entertainment

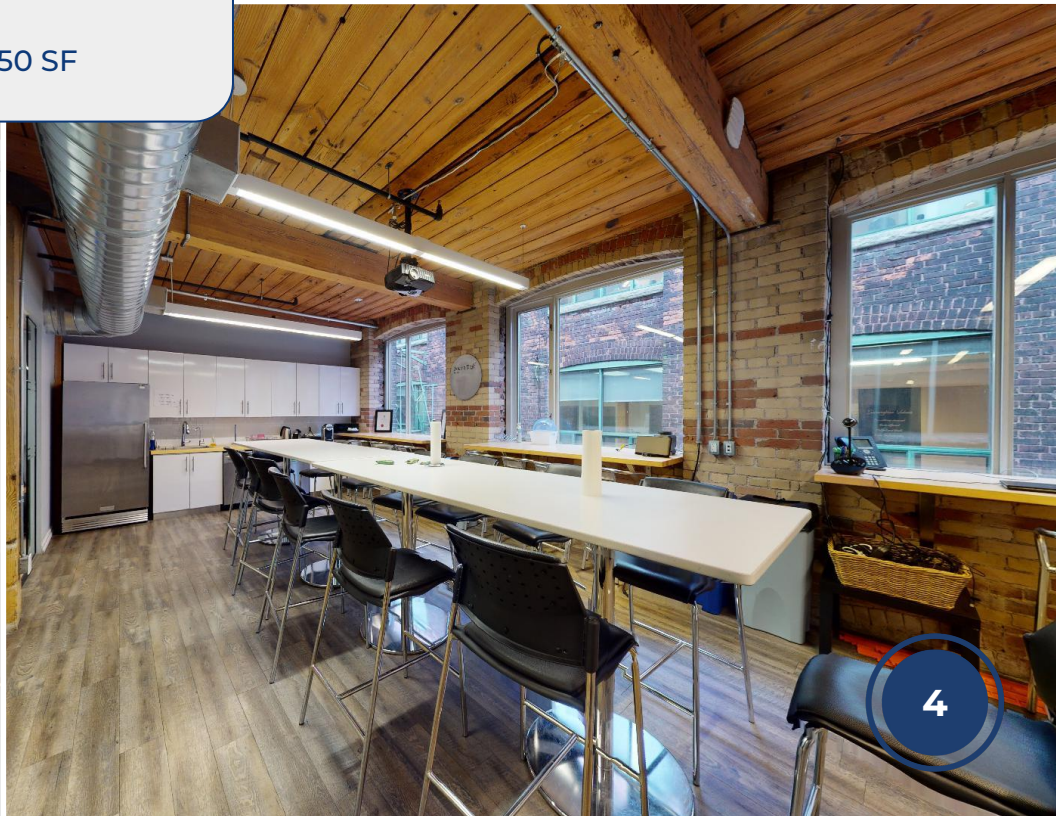
AREA MAP





VIRTUAL
TOUR

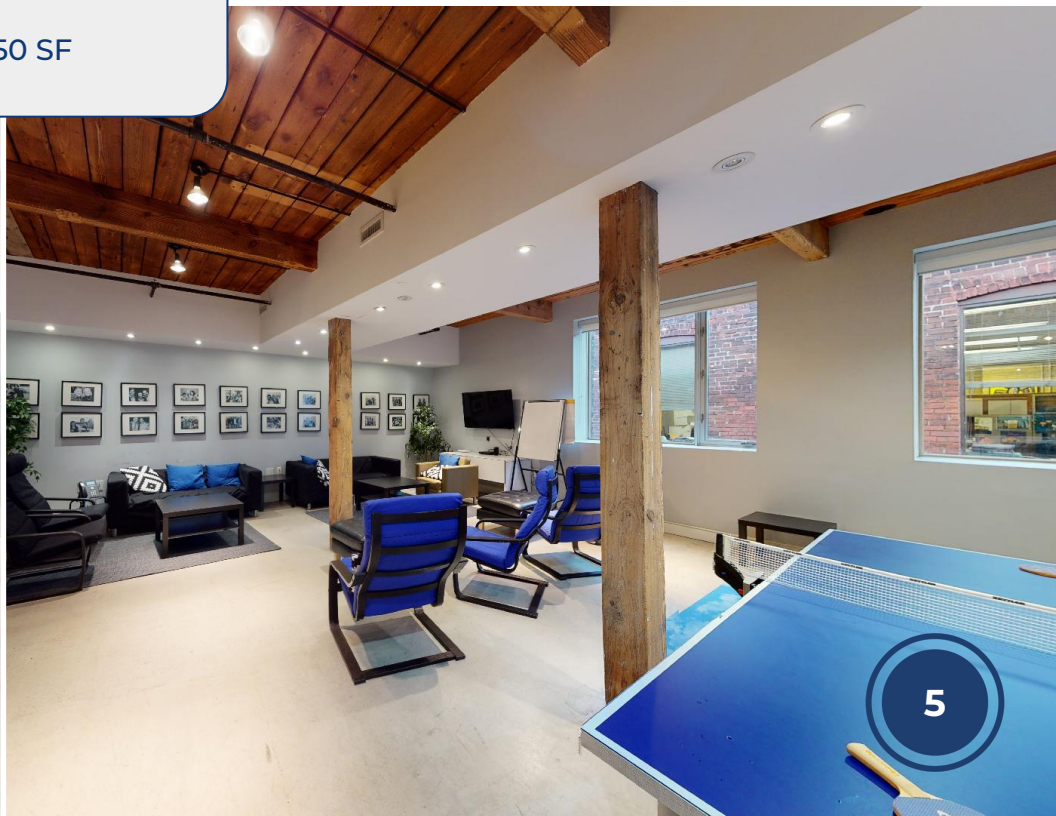
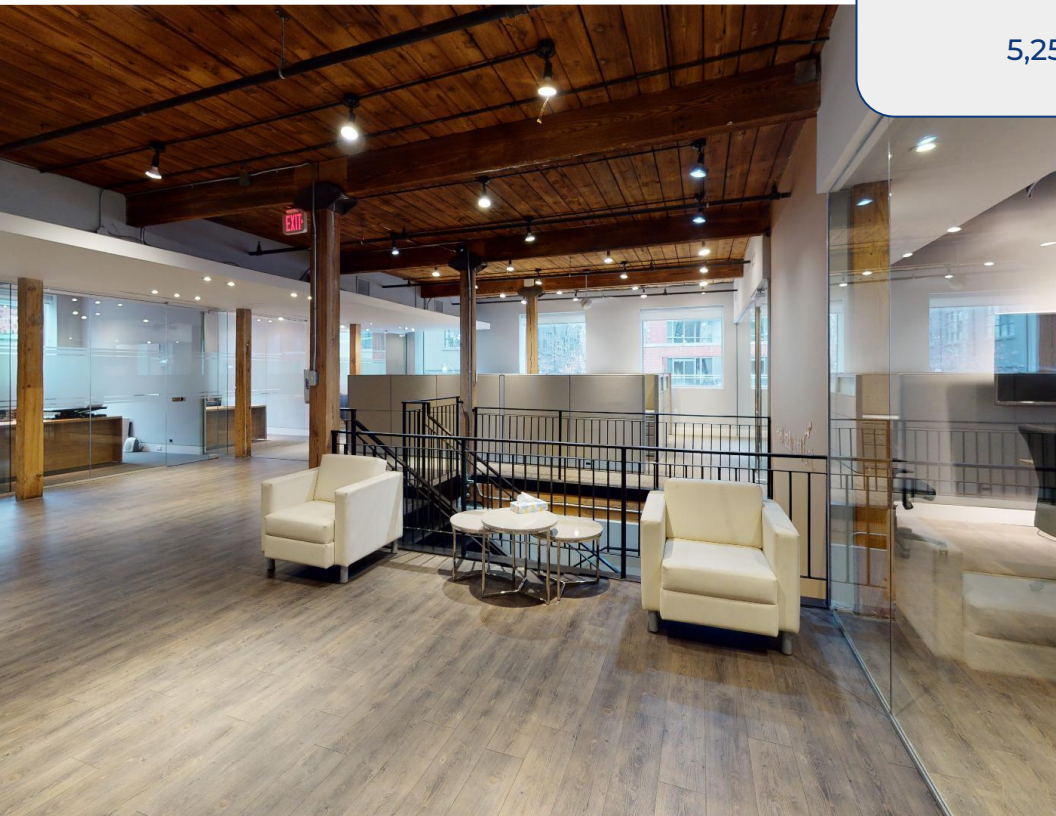
SECOND FLOOR
5,250 SF





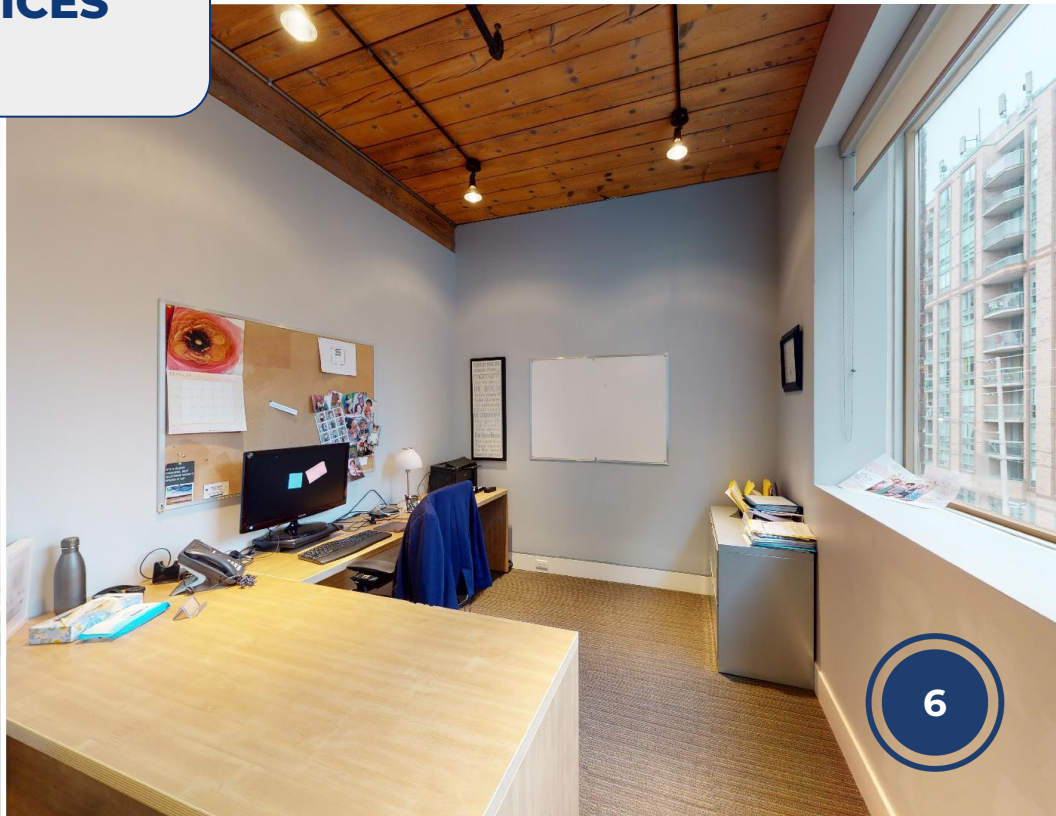
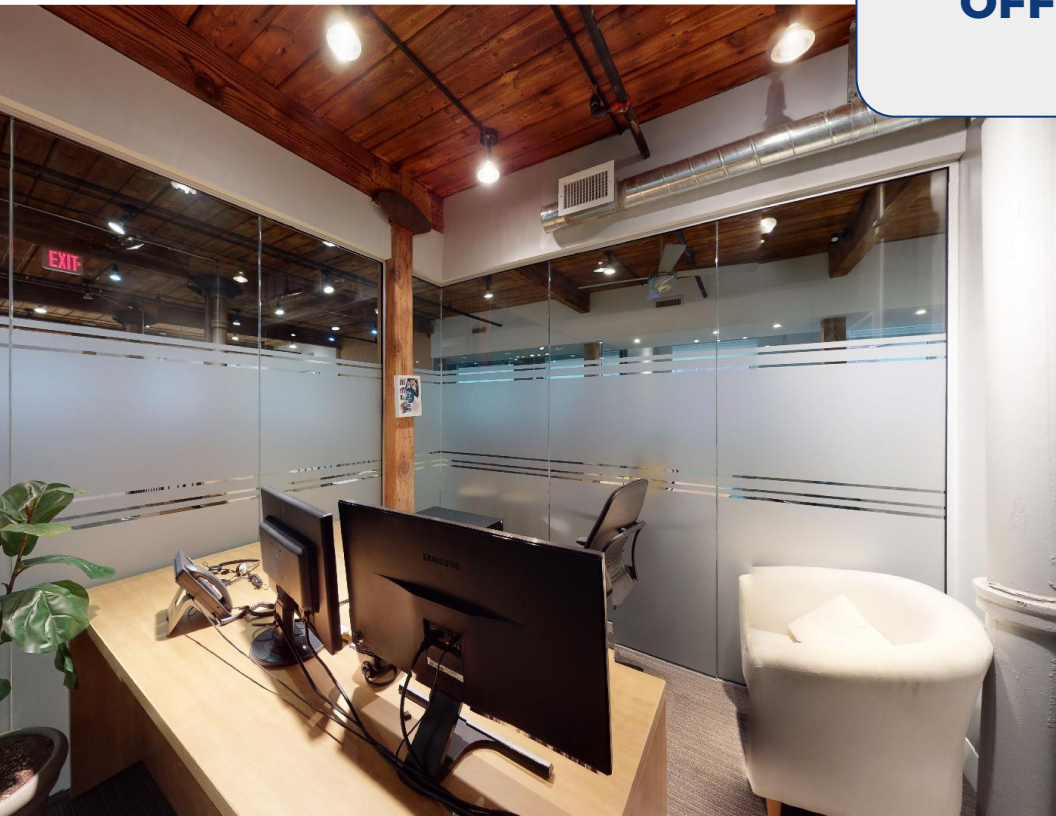
THIRD FLOOR

5,250 SF





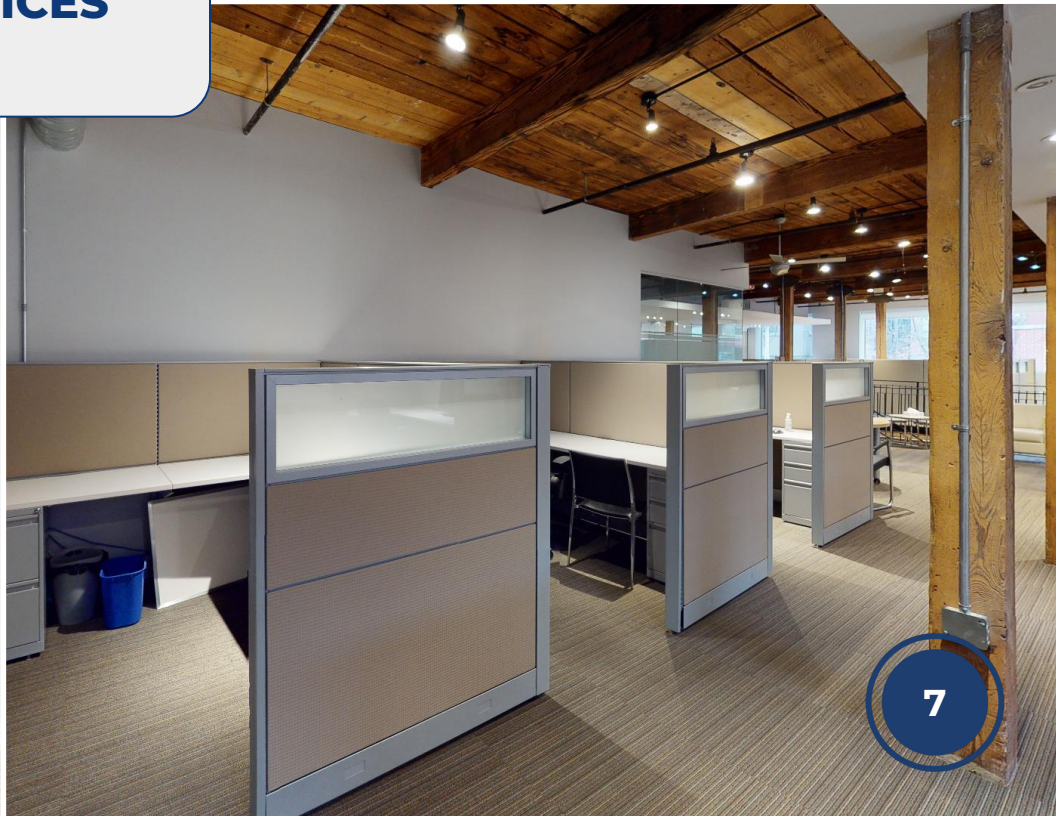
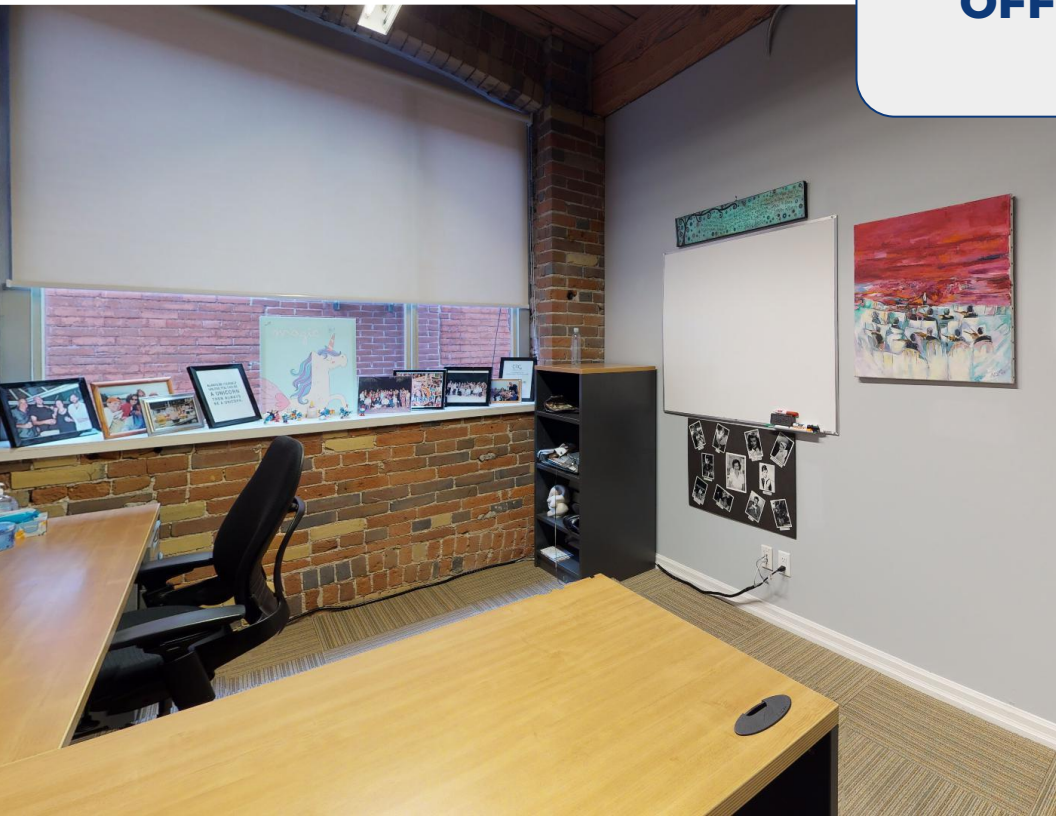
OFFICES





VIRTUAL
TOUR

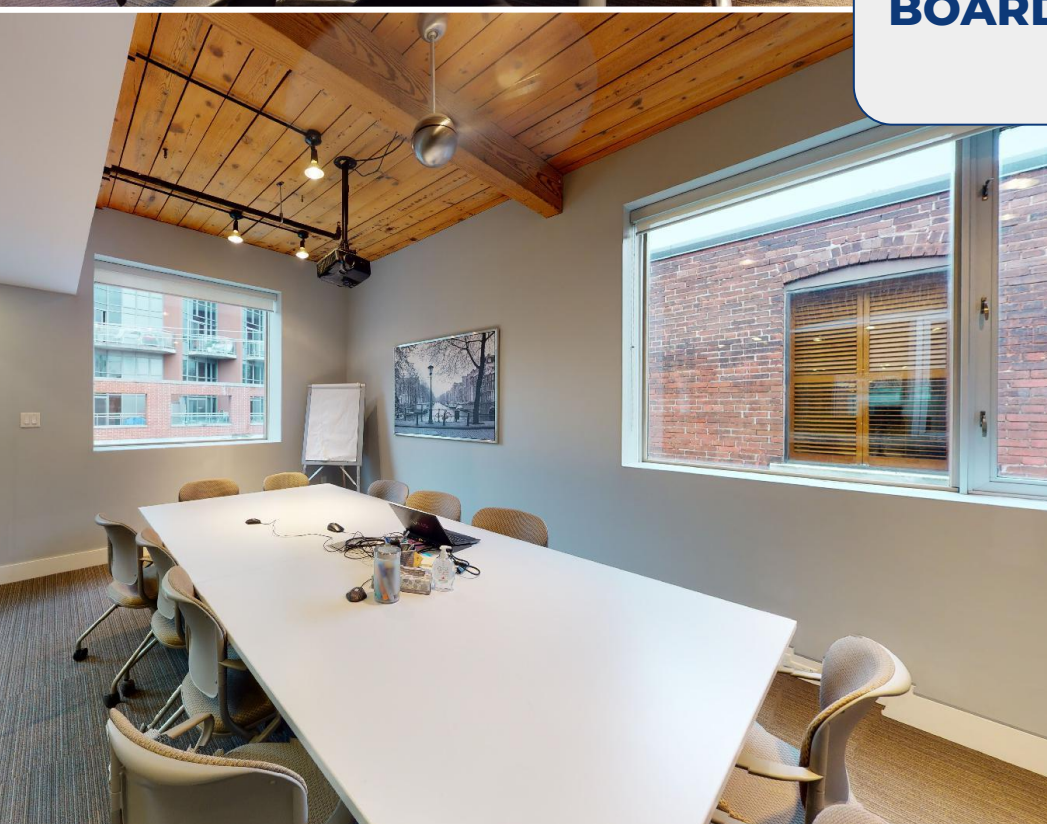
OFFICES





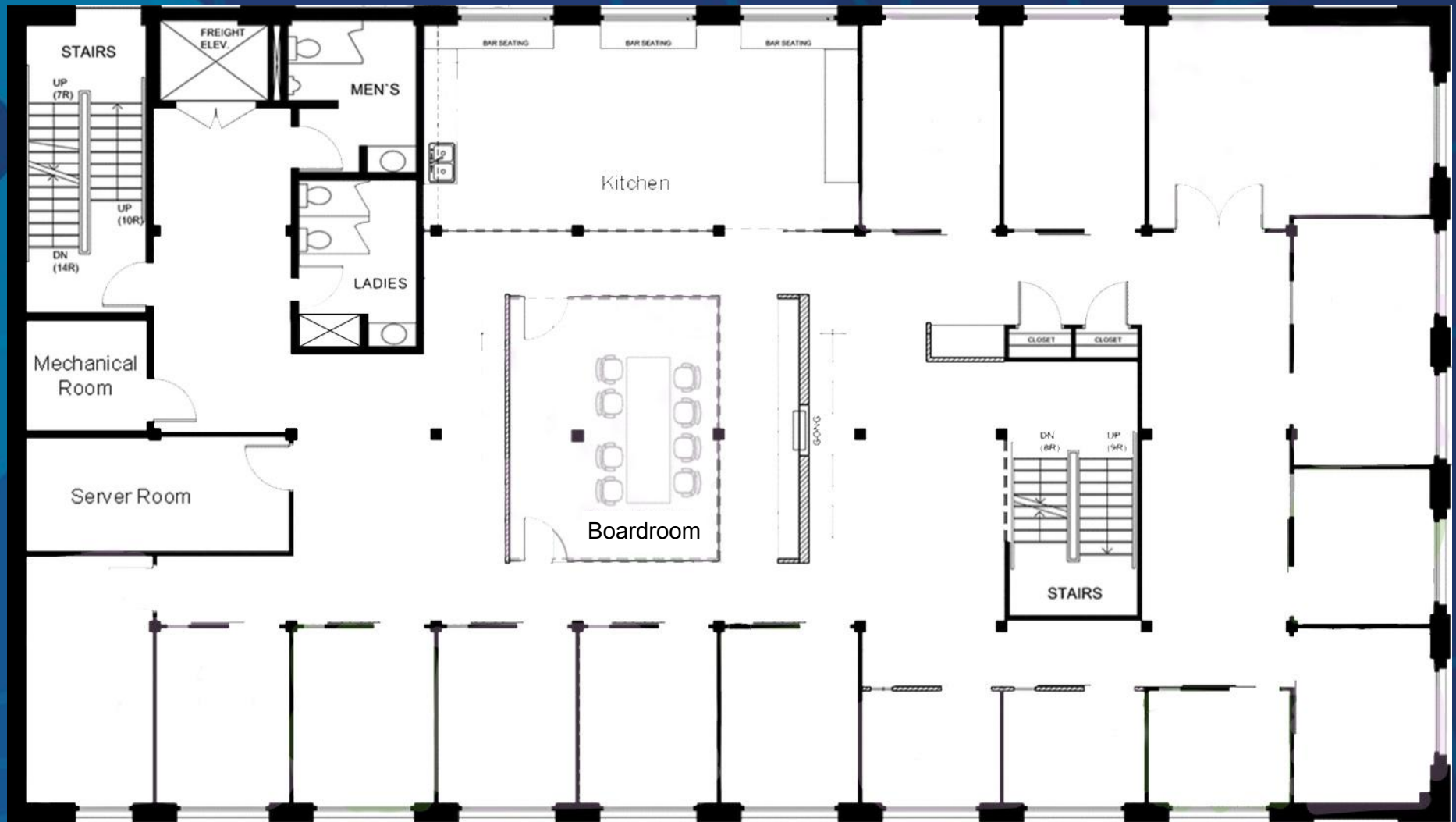
VIRTUAL
TOUR

BOARDROOMS



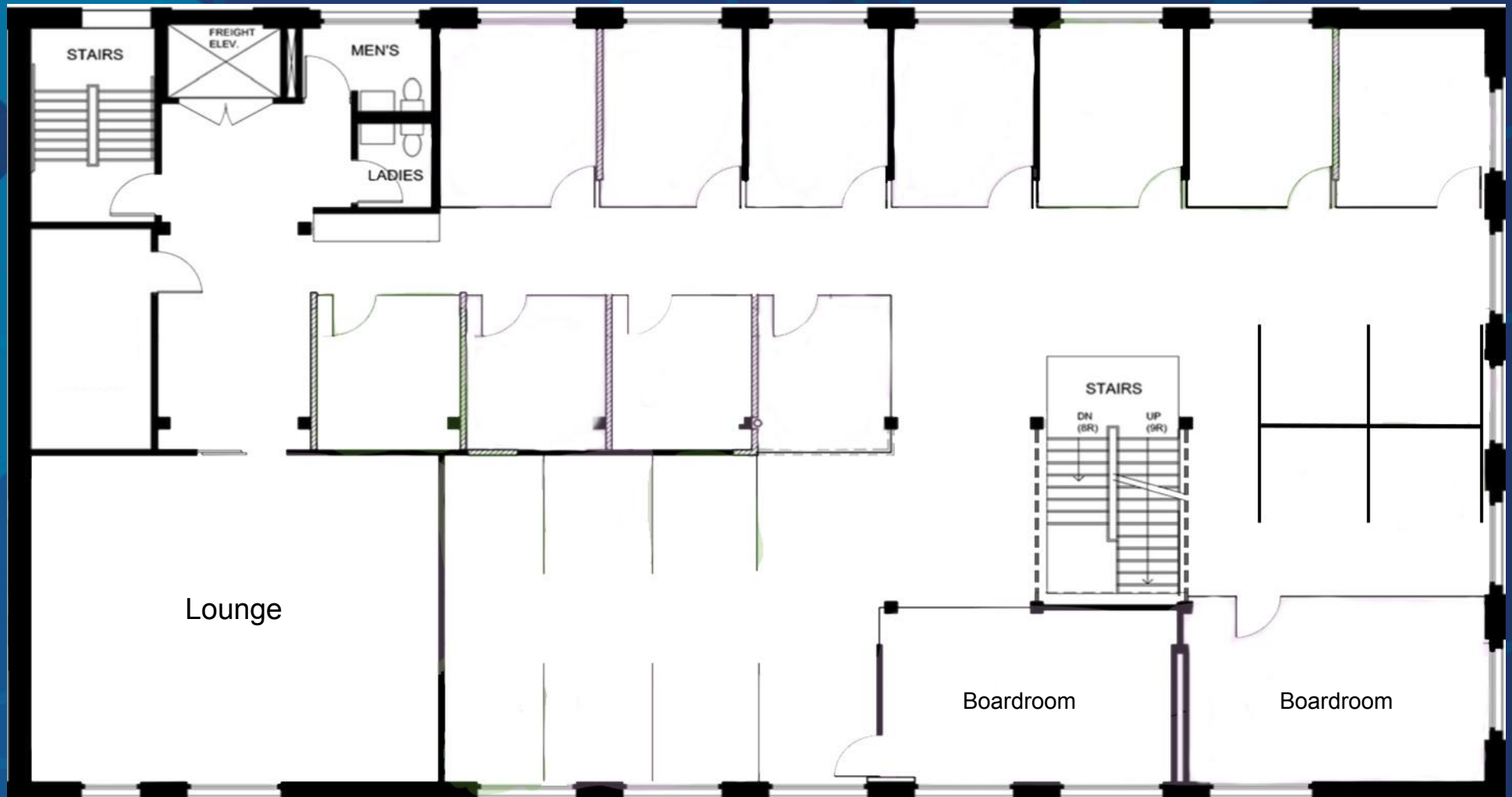
FLOOR PLANS

SECOND FLOOR - 5,250 SF



FLOOR PLANS

THIRD FLOOR - 5,250 SF





**METROPOLITAN
COMMERCIAL**

MING ZEE

President, Broker of Record

416.703.6621 x222

ming.zee@metcomrealty.com

STEVEN PHILLIPS

Sales Representative

416.703.6621 x232

steven.phillips@metcomrealty.com

150 Beverley Street | Suite 1

Toronto, ON | M5T 1Y5

416.703.6621

www.metcomrealty.com