



METROPOLITAN
COMMERCIAL

543
FAMILY PHYSICIANS

Dr. Lisa Ballinger
Dr. Kathryn L. Healey

OFFICE SPACE FOR LEASE

543 EGLINTON AVENUE EAST

TORONTO | ON

DETAILS

LOCATION	Intersection of Bayview Avenue and Eglinton Avenue East. Click here for map
BUILDING DETAILS	824 SF
SEMI-GROSS RENTAL RATE	\$2,695/month
ADDITIONAL RENT	Utilities + HST
ZONING	R(D2*943)
TERM	3 Years (1 Year Option Available)
POSSESSION	Immediate

FEATURES

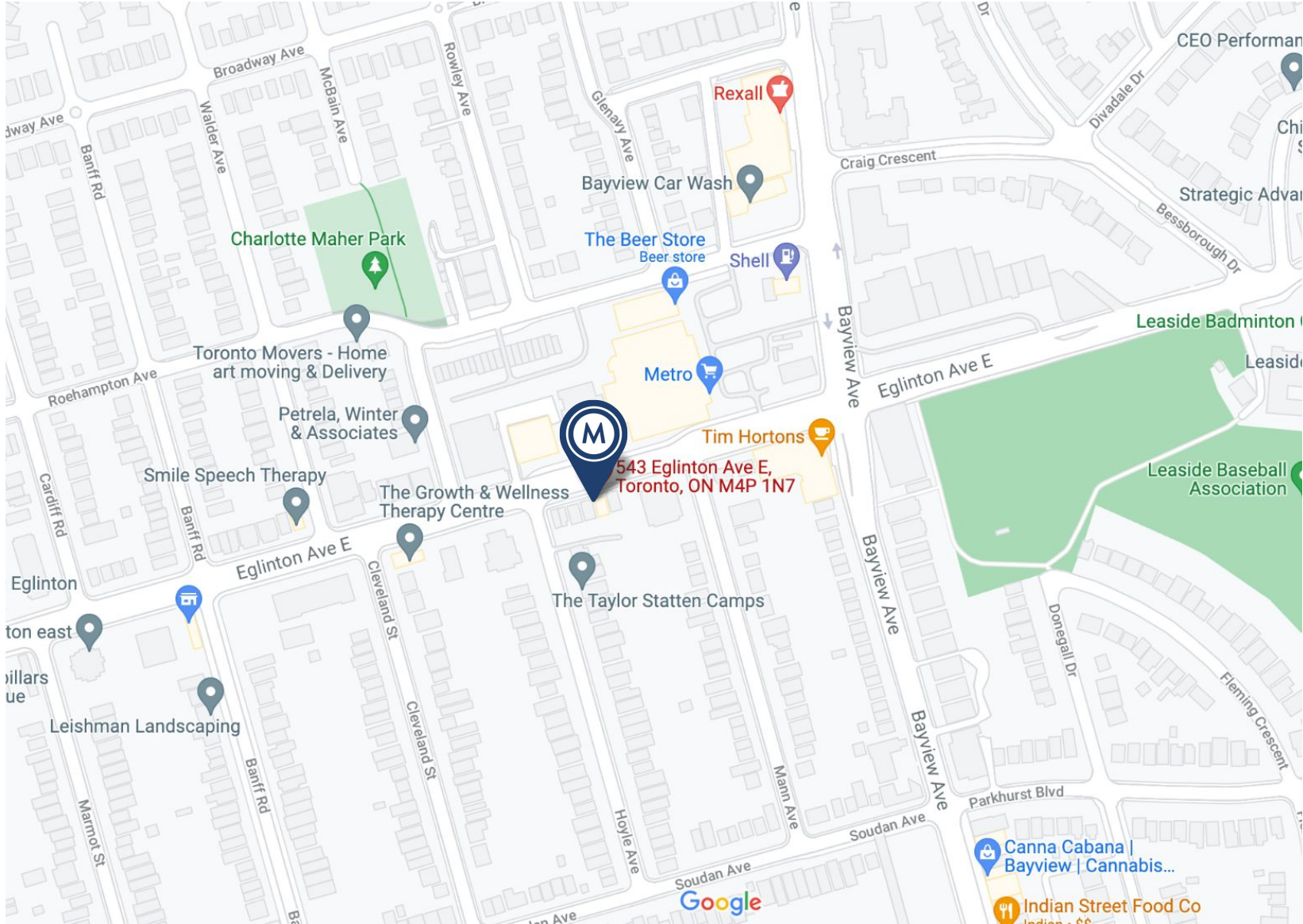
- Fantastic Midtown location, steps from transit and near Bayview Cross Town.
- Spacious, stand alone medical office, could be for other uses: beauty, tech, professional, retail, educational, creative, general office.
- With four nice sized private offices , large and bright reception, storage, useful space.
- Perfect time to move from a larger office building to a clean self-contained easy access building.
- Excellent street presence, foot traffic, and signage.
- Two parking spaces available.

543 EGLINTON AVENUE EAST | FOR LEASE



PROPERTY OVERVIEW





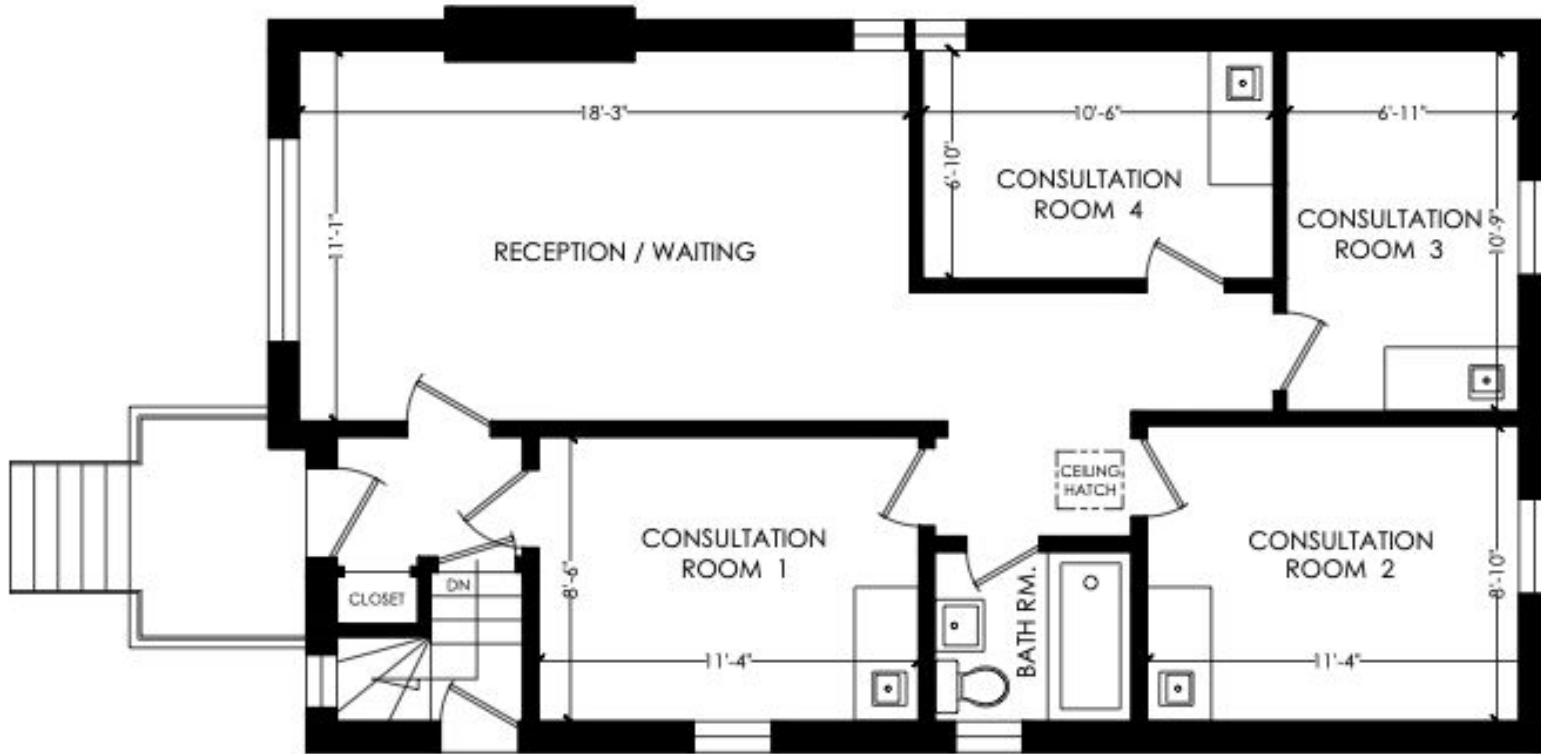
AREA MAP



543 EGLINTON AVENUE EAST | FOR LEASE



543 EGLINTON AVENUE EAST | FOR LEASE



MAIN FLOOR
FLOOR AREA 824 SQ. FT.

Please note: Measurements may not be 100% accurate. Floor plans are provided as a convenience and to be used as a guideline only.

DAVID J HARVEY DRAFTING SERVICES 416.726.0328





**METROPOLITAN
COMMERCIAL**

CLAIRE BLICKER

Vice President

Sales Representative

416.703.6621 x 232

claire.blicker@metcomrealty.com

150 BEVERLEY STREET, UNIT 1

TORONTO, ON | M5T1Y5

416.703.6621

WWW.METCOMREALTY.COM

The information contained herein has been gathered from sources deemed reliable. However, Metropolitan Commercial Realty Inc., Brokerage, its agents, or employees make no representations or warranties on the accuracy of said information. Prospective tenants and their agents are advised to independently verify any information provided herein. Metropolitan Commercial Realty Inc., Brokerage