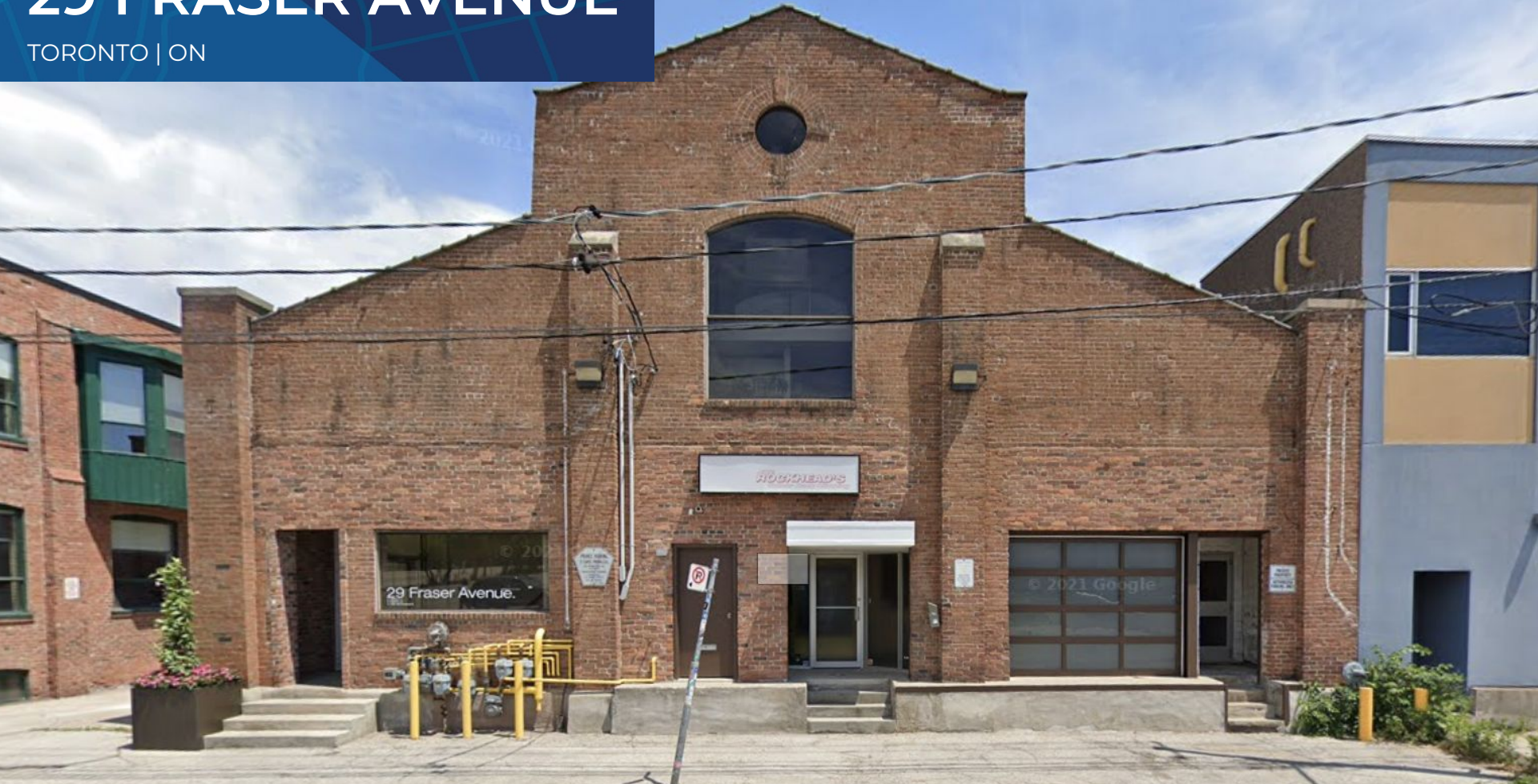


FOR LEASE  
**29 FRASER AVENUE**

TORONTO | ON



**METROPOLITAN  
COMMERCIAL**

## DETAILS

---

### LOCATION

Fraser Avenue, South of Liberty Street. [Click here for map](#)

### BUILDING DETAILS

Unit 5 - 1,282 SF

### NET RENTAL RATE

\$25.00 PSF

### ADDITIONAL RENT

\$9.50 PSF + Hydro + Gas + HST

### TERM

2 to 5 Years

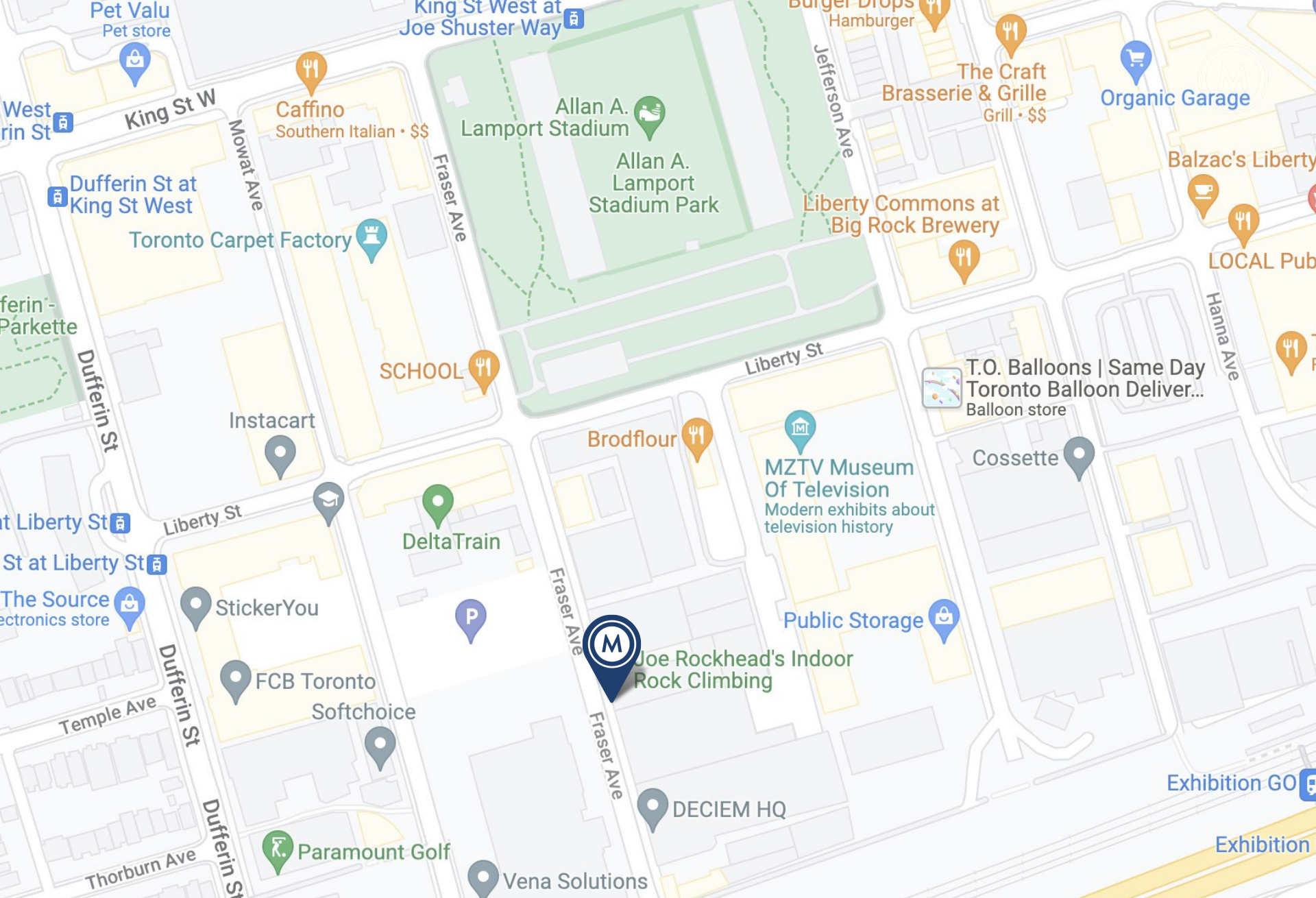
### POSSESSION

Immediate

## FEATURES

---

- Rare two-level Liberty Village office loft.
- 2nd floor walk up, bright, open concept, private washroom, hardwood floors, skylights.
- Close proximity to Exhibition Go Station.
- Beanfield Internet Service Available.





# LIBERTY VILLAGE

Liberty Village functions as one of the city's creative corridors with production facilities, agencies and tech firms operating out of lofts and studio spaces in converted former warehouses.

This area is filled with young professionals, who enjoy the wide range of activities offered both during daytime and nightlife.

**Notable landmarks** include Lamport Stadium, Balzac's Coffee, Mildred's Temple Kitchen, Liberty Commons, and MZTV Museum of Television.

304

8-minute walk

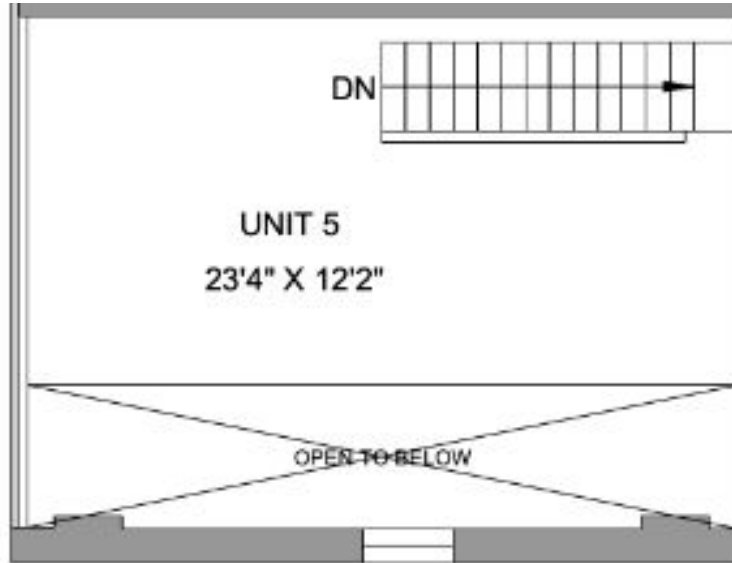
504

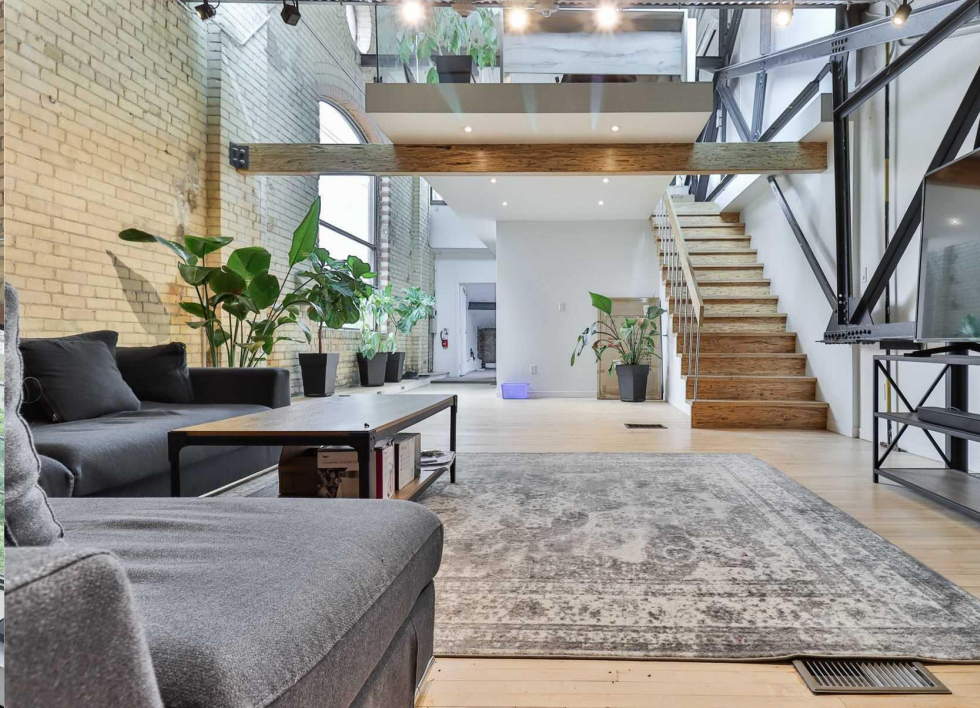
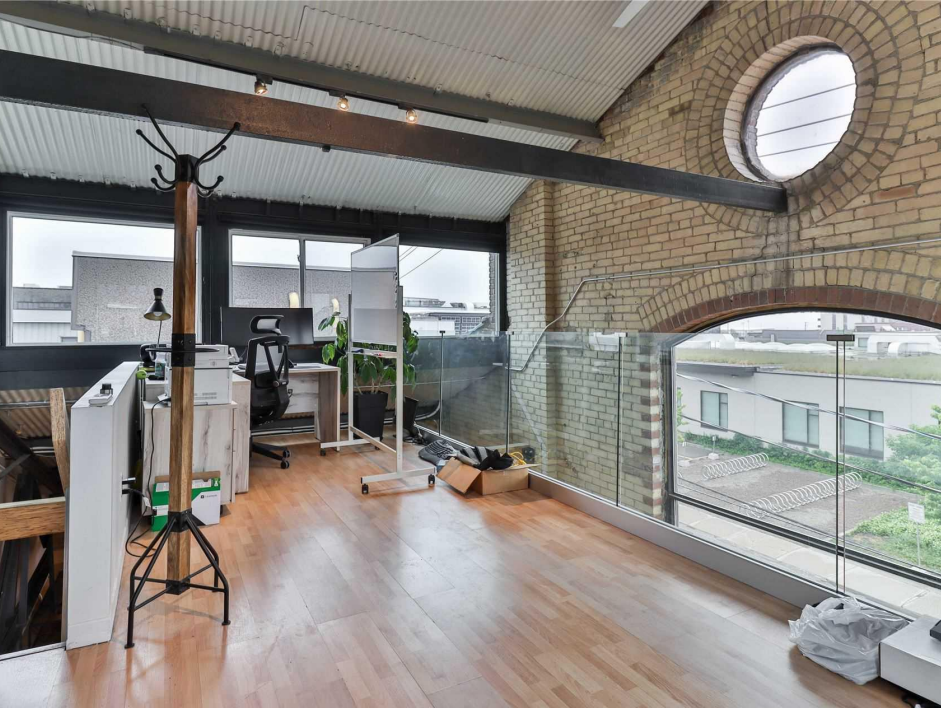
4-minute walk

Exhibition GO

5-minute walk

# FLOORPLAN





METROPOLITAN COMMERCIAL REALTY | 29 FRASER AVENUE #5



# METROPOLITAN COMMERCIAL

## **AMIR NOURBAKHSH**

Managing Director  
Sales Representative  
647.262.4757  
amir@metcomrealty.com

## **JESSE ROTH**

Vice President  
Sales Representative  
647.289.0244  
jesse.roth@metcomrealty.com

150 BEVERLEY STREET, UNIT 1

TORONTO, ON | M5T 1Y5

416.703.6621

[WWW.METCOMREALTY.COM](http://WWW.METCOMREALTY.COM)

The information contained herein has been gathered from sources deemed reliable. However, Metropolitan Commercial Realty Inc., Brokerage, its agents, or employees make no representations or warranties on the accuracy of said information. Prospective tenants and their agents are advised to independently verify any information provided herein. Metropolitan Commercial Realty Inc., Brokerage